

CONFERENCE HANDBOOK



TASTROG 1993

THE 19TH BIENNIAL A.S.F.
CONFERENCE

at

LAUNCESTON, TASMANIA

Monday 4th January 1993

to

Friday 8th January, 1993

Hosted by Northern Caverneers Inc.
P.O. Box 315, Launceston 7250

FOR YOUR CAVING AND OUTDOOR NEEDS



Helmets

Karabiners

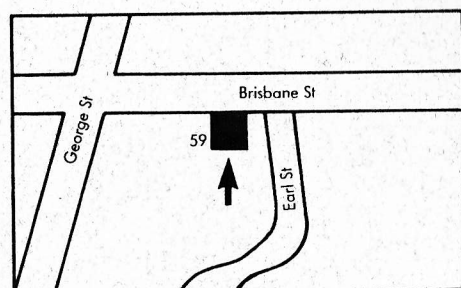


Caving ropes

Sit harnesses



BLUE
WATER



LAUNCESTON 59 Brisbane St.
(003) 31 4240

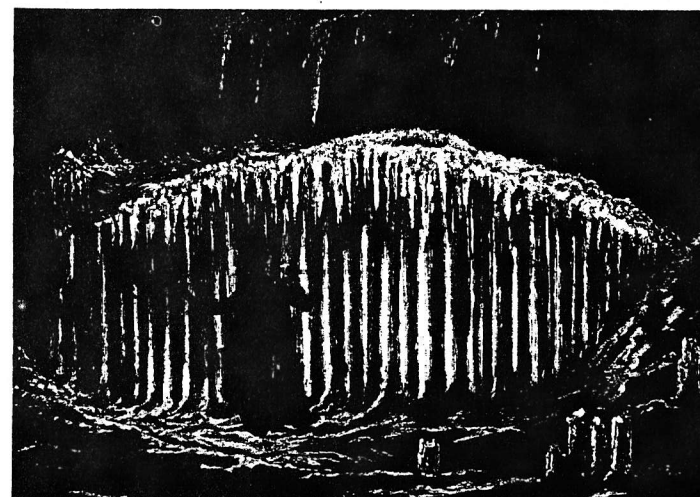
Paddy Pollin

THE LEADERS IN ADVENTURE

CONTENTS

PAGE No.

2	Welcome and thanks
3	Site information and shuttle bus
4	Registration, A.S.F. Council, Childcare and Sales
6	Profile: Bob Woolhouse
7	Profile: Robyn Williams
10	"KUBLA KHAN" by Samuel T. Coleridge
12	Social program
13	Spelio Sports
15	Meals
15	Session procedures
16	Conference at a glance
18	Tuesday 5 Jan
19	Wednesday 6 Jan
20	Thursday 7 Jan
24	Cave grades
25	Post conference field trips
29	Mole Creek Geology
33	Map of Glenara



WELCOME TO TASTROG '93

This, the 19th Biennial Conference of the Australian Speleological Federation, is brought to you by your hosts, Northern Caverneers Inc.

The members of the Tas Trog committee have worked hard for this conference, from when it was first suggested that Northern Tasmania be the venue, to its final production. During that three years, we have written more letters and articles than we care to remember, been on the phone for hours and met with officials and representatives from dozens of organisations, companies and small businesses.

The Tas Trog '93 Committee members are :- Steve Collins, Yvonne Gluyas, Chris Riley, Jean and Paul Van Nynanten, Rosie Shannon and Brett Wilkins.

We have been greatly assisted by Rick Bray and Henry Shannon. Many thanks also go to Peter Dohnt for writing and operating the data base program that brought Tas Trog into the computer age.

In the three years it took us to produce Tas Trog, five babies were added to our club by the committee and its assistants, so it was a productive time for us all!

To our newest Troglers, Katy Collins, Johnathan Dohnt, Tegan Gluyas - Riley, Marianne Shannon and Brigida Van Nynanten - the future is yours!

THANK YOU

To our major sponsors :- Ansett Australia, Parklane Motel, Wildsports, George Harvey Electrics, Paddy Pallin (Launceston), Australian Geographic, Kinnears Boral and Humes Pipes. Without their assistance, our task would have been impossible.

In particular we would like to thank Michael Walker from Ansett Australia, Marion McLeod from Glenara, Lars Winberg from Paddy Pallin (Launceston), Fred Peacock from Bream Creek Vineyard, Robyn Williams, Bob Woolhouse, John Miller, Chester Shaw, Sally Cox from Sea Cat, The Launceston Walking Club for "Do You Know Tasmania" show and bushwalking guides, the Department of Sport and Recreation for their financial assistance, and Gwen Dohnt for the name "Tas Trog"

We would also like to acknowledge the support of :- Launceston City Council, Kevin Kiernan, Ian Houshold, Abel Tasman Motor Inn, TAFE childcare college, Tasmanian Sportswear, Olde Tudor, Budget Print, Prestige Bookbinders, Coca Cola Bottlers, Georgetown Coaches, Goodyear Tyres The Royal Launceston Show Society and Guinness Australia.

GLENARA SITE INFORMATION

- PHONE** (003 43 2882) This blue phone is situated near the childcare "garden" room. Incoming messages will be taken, when possible, and displayed on the nearby notice board.
- MESSAGES** May be left on the notice board near the "blue phone".
- LOST & FOUND** Found objects can be handed in to any Tas Trog committee member, or displayed on table in Conference Marquee. "Lost object" details may be posted up on notice board.
- BAR** Will be open at Glenara from 6.00 pm to 8.30 pm Monday, 5.30 pm to 8.00 pm Tuesday and Wednesday, 3.30 pm to 6.00 pm Thursday. Tasmanian beer, wine, soft drink and orange juice will be on sale.
- PARKING** For hostel residents housed in "Lions" or "Carinya" cottages, parking is available beside your cottage. Hostel residents in "Danbury - Payne" may park in designated area nearby, or in main car park. Campers may park beside their tents. All other delegates and visitors to park in main car park only.
- TRANSPORT** The "Tas Trog" bus will pick up from Brisbane Street, in front of Parklane Motel, at 8.30 am and Hobart Rd., in front of Abel Tasman Motor Inn at 8.50 am on Tuesday, Wednesday and Thursday, to arrive at Glenara before 9.00 am.
- The bus will return to the motels, leaving the entrance courtyard of Glenara at 10.00 pm Monday, following the D.Y.K.T. show, 6.00 pm and 7.45 pm Tuesday, 6.00 pm Wednesday and Thursday.
- Please check **registration** and **social events** information for bus pickup times for these events.

REGISTRATION

Will commence in the Glenara dining room from 2 pm on Monday 4 January. Any changes can be made to your booking here. The "Tas Trog" bus will shuttle to and from the motels during the afternoon.

Registration will also take place here between 8 am and 10 am Tuesday 5 January.

A.S.F. COUNCIL MEETINGS

To be held in the Danbury - Payne meeting room at Glenara from 10 am on Monday 4 January and Friday 8 January. A daily meal ticket may be booked by delegates for \$12. Bed and breakfast accommodation in the Glenara hostel may also be booked for the Friday night at \$18 per person.

CHILDCARE

This free service will be available in the garden room at Glenara from 9 am to 5.30 pm on Tuesday and Wednesday, and 9.00 a.m. to 12.30 p.m. on Thursday, for all children up to 12 years of age. It will be coordinated by a TAFE qualified child carer, assisted by the experienced carer from Parklane Motel. Your children will enjoy Tas Trog even more than you will!! Morning and afternoon teas will be served to the kids, but you are asked to collect your children during the lunch hour.

Private negotiations for extra childcare at Parklane and Glenara during the Cavers Dinner may be made with the carers.

SALES

Tee shirts ordered during the conference, will be posted to you in late January. Check out our selection of sizes and colours. Extra copies of papers available at \$20, stickers \$1 each. Buy now!



GUINNESS



NOTES



PROFILE

Bob Woolhouse;

I first had dealings with Bob in my early days of caving. He had just given a small group of cavers lessons in vertical cave techniques at Longdrop and we were climbing up the steep hill towards the cars when Bob (with a full pack of climbing gear and rope) turned in absent minded surprise to see that the gasping from the rest of the group (who were half his age and younger) needed him to stop for a rest for us.

Bob is one of those rare people who takes life and extracts everything from it, he finds interest and fascination in everything living and adds tremendous depth to any caving, skiing or bushwalking trip with his vast knowledge of botany and biology.

His climbing experiences go back to around 1938 when he was a founding member of the Sheffield University Mountaineering Club, but the crowds on the British rock climbs became too much by 1959, so he collected information about New Zealand, Canada and Australia. Most of the information was distorted, but the legend on a map of Tasmania had "caves" on it. After writing to Frank Brown in Hobart, Bob moved out from England and landed a job in Launceston and with two expatriate Hobartian cave-neers formed the T.C.C. Northern Branch in 1961. They then started looking for Markoopa 2.

The first Northern Caverneers constitution was dreamt up by the original seven members after having frustrations with borrowing gear and returning it to Hobart. A description of the club philosophy comes from Bob's notes. "Fundamentally, we believed the club existed for the enjoyment of its members, not as a device to achieve elevated social aims such as providing occupational therapy to delinquents and a constitution designed to achieve this end came into use about 1963, but in accordance with our philosophy nobody bothered to put it in writing until about 1970." The theme of the constitution is "to eliminate paperwork, so that the most enthusiastic caver may serve on the committee - they have only one primary responsibility - viz: to see that the club is supplied with caving gear and that it is kept in a safe condition."

In 1968, Bob and 5 others were awarded bravery medals for a cave rescue in Hobart. He has been intimately involved with every major cave find in Northern Tasmania over the last 32 years and their preservation.

One of the highlights of his caving career was "being blessed by the Bishop of Parniers in a service in the cave "La Bouiche" on a cave diving expedition with Norbert Casteret (an Anglo, French caving expedition, late 1940-50's)."

To indicate the energy Bob gives to life, ask yourself how many 70 plus year olds do you know who still cross country ski, sail, cave, bushwalk, landscape a rain forest on a new 2 acre block and is halfway through building a new house.

We all have something to learn from a man like this who wrings from life everything it has to give.

Thanks to Mary Woolhouse and Gill Chapman.

Brett Wilkin.

PROFILE

Robyn Williams; A.M. 1988. B.Sc. (Hons. London)

Hon. D.Sc. (Deakin, Sydney, Macquarie Universities) FANZAASI Broadcaster with the ABC Science Unit (Radio) since 1972, Executive Producer since 1975.

Robyn is also President of ANZAAS since 1992, President of the Australian Museum Trust since 1985, a foundation Commissioner of the Commission for the Future since 1984, and Chairman of the Commission since 1990. National Commission for UNESCO, 1984-86.

Publications: Best of the Science Show (1983), Science Show 2 (1986), Outpourings (1987), Here come the Philistines (1989), Uncertainty Principles (1989). He says his recreations are running, music, writing and indolence.



HumesTM

Setting the Standard

Discover the benefits of using a Humes Concrete water tank.

- Clean fresh rainwater
- Cost competitive alternative
- Ideal for domestic and rural use
- Steel reinforced concrete is strong and durable
- Low maintenance and long service life
- Robust enough to withstand vandalism
- Tank supplied painted white (other colours optional)
- Plenty of storage capacity — 22,700 litres
- Standard fittings supplied — manhole and inlet strainer, 25mm and 50mm outlet sockets, P.V.C. raindrain

Contact us now and let us help you.

THE NAME BEHIND THE PRODUCT FOR 65 YEARS

For more information:

BURNIE
Ph. (004) 31 1460

LAUNCESTON
Ph. (003) 31 4115

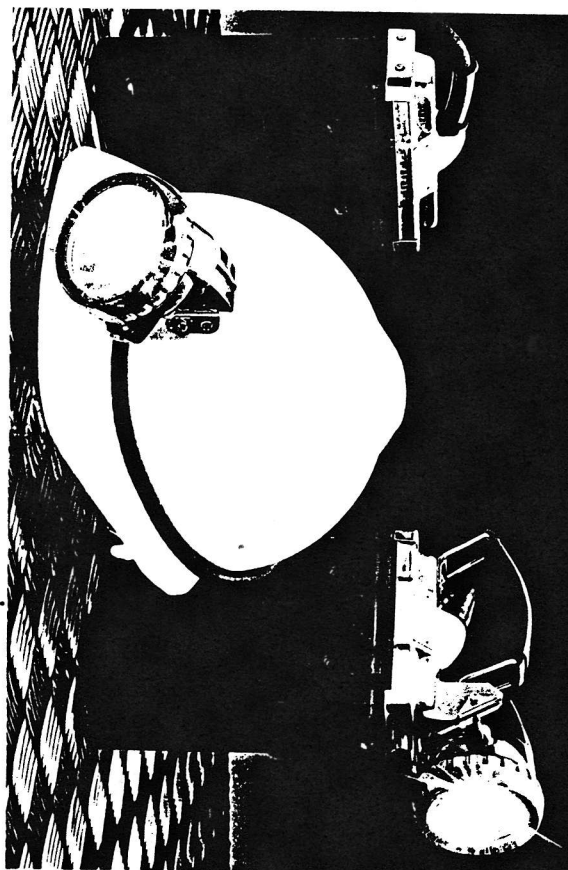
HOBART
Ph. (002) 73 1422

Now with Halogen Bulb



Mining & Industrial Safety Handlamps and Caplamps

AVAILABLE THROUGH DISTRIBUTORS IN
ALL STATES OF AUSTRALIA



GILBERT GRAY & CO. PTY LTD
MINING & ENGINEERING SUPPLIES
23 CLYDE ST. RYDALMERE, NSW 2116
TELEPHONE: (02) 638 1077
FACSIMILE: (02) 638 4718



TASMANIAN DISTRIBUTORS
GEORGE HARVEY ELECTRIC PTY. LTD.
LAUNCESTON
003-316533
HOBART
002-342233

KUBLA KHAN

In Xanadu did Kubla Khan

A stately pleasure-dome decree:
Where Alph, the sacred river, ran
Through caverns measureless to man
Down to a sunless sea.

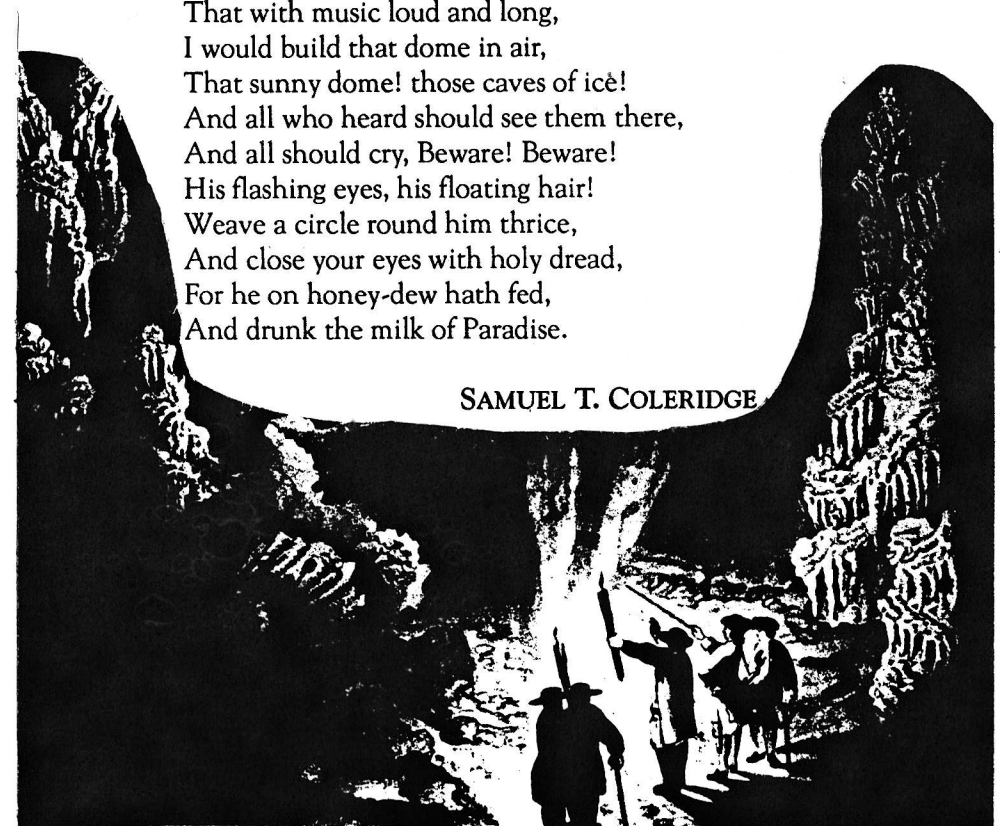
So twice five miles of fertile ground
With walls and towers were girdled round:
And here were gardens bright with sinuous rills,
Where blossomed many an incense-bearing tree,
And here were forests ancient as the hills,
Enfolding sunny spots of greenery.

But oh! that deep romantic chasm which slanted
Down the green hill athwart a cedarn cover!
A savage place; as holy and enchanted
As e're beneath a waning moon was haunted
By woman wailing for her demon-lover!
And from this chasm, with ceaseless turmoil seething,
As if this earth in fast thick pants were breathing,
A mighty fountain momently was forced,
Amid whose swift half-intermitted burst
Huge fragments vaulted like rebounding hail,
Or chaffy grain beneath the thresher's flail:
And 'mid these dancing rocks at once and ever
It flung up momentarily the sacred river.
Five miles meandering with a mazy motion
Through wood and dale the sacred river ran,
Then reached the caverns measureless to man,
And sank in tumult to a lifeless ocean:
And 'mid this tumult Kubla heard from far
Ancestral voices prophesying war!

The shadow of the dome of pleasure
Floated midway on the waves;
Where was heard the mingled measure
From the fountain and the caves.
It was a miracle of rare device,
A sunny pleasure-dome with caves of ice!

A damsel with a dulcimer
In a vision once I saw:
It was an Abyssinian maid,
And on her dulcimer she played,
Singing of Mount Abora.
Could I revive within me
Her symphony and song,
To such a deep delight 'twould win me,
That with music loud and long,
I would build that dome in air,
That sunny dome! those caves of ice!
And all who heard should see them there,
And all should cry, Beware! Beware!
His flashing eyes, his floating hair!
Weave a circle round him thrice,
And close your eyes with holy dread,
For he on honey-dew hath fed,
And drunk the milk of Paradise.

SAMUEL T. COLERIDGE



SOCIAL PROGRAM

Preconference bushwalks 1 - 3 January to Liffey falls, Ben Lomond, Lees Paddocks and the Great Western Tiers.

Monday 4th

The free welcome **Barbecue** at Glenara will start at 6 pm, following registration. You may purchase Tasmanian beer, wine and soft drinks at the Glenara bar, to wash down our baked whole lamb, snags and salads.

At 8:30 pm the Launceston Walking Club will show their "Do You Know Tasmania" audio visual presentation. This widely acclaimed production is not to be missed!

The "Tas Trog" bus will leave Glenara at 3:30 pm, 4:30 pm and 5:30 pm for the Parklane and Abel Tasman Motels. It will pick up from Brisbane St. in front of the Parklane Motel at 3:50 pm, 4:50 pm and 5:50 pm and Hobart Rd. in front of Abel Tasman Motor Inn at 4 pm, 5 pm and 6 pm for transport to Glenara. The bus will leave Glenara at 10 pm (or after the D.Y.K.T. show), to return you to your motels for the night.

Tuesday 5th

Mystery bus tour ?? !! \$8 per adult \$4 per child. Leaves Glenara 7.00 p.m. Picks up from Abel Tasman 7.05 pm and Parklane at 7.15 p.m. then where? Come on and find out. A clue you won't be sitting down all night. Wear boots and caving lights. A prize for the quiz winner! The bus will return you to your accommodation afterwards.

Wednesday 6th

Casino visit : \$12 per person. Dress neat casual; no sneakers or sandals. Men must wear shirt with collar; no t-shirts allowed. Jeans O.K. if worn with shoes. Participants must be eighteen or over. Our bus will pick up from Parklane at 6:30 pm, Abel Tasman at 6:40 pm and Glenara at 6:45 pm for a B-B-Q dinner at the Casino followed by a tour of its facilities, a welcome gift, and entrance to the gaming room. Bus will leave Casino at 10.00 pm and return you to your accommodation.

Slide Show: "Mole Creek Caves", Presented by The Mole Creek Caving Club in Danbury-Payne Meeting Room, Glenara, 8.00 p.m. - 9.00 p.m.

Thursday 7th

Speleo Sports at Glenara 1:30 pm (see below for details).

Trade display and sales by our sponsors from 1.00 pm. Order your Tasmanian wine, stock up on outdoor gear, test a rope or check out new equipment conveniently on site.

Cavers dinner \$25 per head. 7:30 pm at Olde Tudor, Bass Highway, Prospect. Be prepared for a batty night. The photographic competition will be shown during the evening and trophies presented. Guest speaker will be Bob Woolhouse, from Northern Caverneers, on *changes*. Our bus will leave Glenara at 6 pm to drop delegates off at their motels for a quick clean up and change after the rigours of speleo sports. Pick up from Parklane at 7 pm, Abel Tasman at 7:10 pm, Glenara at 7:15 pm for transportation to the dinner venue. Bookings must be made for this, as we may need to run an extra trip. The bus will be available to return you to your accommodation afterwards.

SPELEO SPORTS

1330 hrs Thursday 6th January

1st Prize: 4 Petzl Zoom Headlamps donated by Wildsports

2nd Prize: 4 Karabiners donated by Wildsports

Conditions of entry:

- Teams of 4, at least 1 being female
- Helmets must be worn
- Boots must be worn.
- All participants enter the course at their own risk
- Registration of teams no later than 10.00 a.m. 6/1/93. Entries available from registration desk

Rules:

Correct route must be followed. Points scored for touching speleotherms. Course will be timed. The team (complete) with the fastest time and the least amount of points will win. Finer points of play will be distributed with the entry card. Rules to be reviewed after building of the course. All rules must be adhered to in the interest of safety. Volunteers are needed from various clubs to be marshall. See registrar please A.S.A.P.

Good Luck.

PARKLANE MOTEL

9 Brisbane Street, Launceston, Tas. 7250

Telephone: (003) 31 4233
Fax: 34 0694 Telex: 58612



MEALS

Breakfast A buffet style breakfast will be served in the Glenara dining room, from 7 am to 8:30 am, for on site campers and hostel residents, on Tuesday to Friday mornings. **Entrance by breakfast tickets only.** Parklane and Abel Tasman guests will be served breakfast at their motel.

Morning and Afternoon Tea + Lunch

Will be served in the Glenara catering marquee on Tuesday, Wednesday and Thursday. Package deal delegates will be issued with daily meal tickets. partners, children and visitors may purchase these for \$12 per person per day from the catering marquee. Hours :- Morning tea 10:30 am, Lunch 12:30 pm - 1:30 pm and Afternoon tea 3.00 pm.

Dinner

A roast meet carvery with vegetables, salad, sweets and drinks will be served in the Glenara dining room from 6 pm to 7:30 pm on Tuesday and Wednesday nights. Evening meal costs are, \$10 per person over 11 yrs, \$5 children 5 - 10 yrs and children under 5 yrs free. Vegetarians catered for, bar service available and bookings may be made in the catering marquee. Dinner will also be served at the Abel Tasman Motor Inn, book with the motel.

Snacks

The Glenara catering marquee will be open from 7 am to 5 pm Tuesday, Wednesday and Thursday for incidental food sales.

PROCEDURES FOR SESSIONS

Each paper presented has been allocated a 30 minute time slot, which includes question and discussion. Session times will be strictly observed. Further discussion on topics can take place during breaks. Each session will be controlled by a chairperson, who will introduce the paper and the presenter, speakers should meet with their chairperson before the session to prepare introductions.

MONDAY		TUESDAY	WEDNESDAY	THURSDAY		FRIDAY
7.00 a.m.		BREAKFAST (7.00 -8.30 a.m.)	BREAKFAST (7.00 -8.30 a.m.)	7.00 a.m.	BREAKFAST	7LA 60 MINUTE CHALLENGE
8.00 a.m.		REGISTRATION DESK OPEN	BREAKFAST	8.00 a.m.	BREAKFAST	BREAKFAST
8.30 a.m.		REGISTRATION DESK OPEN	BREAKFAST	8.30 a.m.	BREAKFAST	BREAKFAST
9.00 a.m.		REGISTRATION DESK OPEN	SESSION 11	9.00 a.m.	SESSION 24	BREAKFAST
9.30 a.m.		REGISTRATION DESK OPEN	SESSION 12	9.30 a.m.	SESSION 25	
10.00 a.m.		CONFERENCE OPENING	SESSION 13	10.00 a.m.	SESSION 26	
10.30 a.m.	MEETING ROOM	MORNING TEA	MORNING TEA	10.30 a.m.	MEETING ROOM	MORNING TEA
11.00 a.m.	"Danbury Payne"	SESSION 1	SESSION 14	11.00 a.m.	SESSION 27	A.S.F. Council Meeting
11.30 a.m.	ANNEXE, Glenara	SESSION 2	SESSION 15	11.30 a.m.	SESSION 28	A.S.F. Council Meeting
12 noon	A.S.F. Council 10.30-12.00	SESSION 3	SESSION 16	12 noon	SESSION 29 (10 minutes)	A.S.F. Council Meeting
12.30 p.m.	LUNCH	LUNCH	LUNCH	12.30 p.m.	(from 12.10) LUNCH	LUNCH
1.00 p.m.	LUNCH	LUNCH	LUNCH	1.00 p.m.	LUNCH & TRADE DISPLAY OPENS	LUNCH
1.30 p.m.	A.S.F. Council Meeting	SESSION 4	SESSION 17	1.30 p.m.	SPELEO SPORTS BEGIN	A.S.F. Council Meeting
2.00 p.m.	continues.	SESSION 5	SESSION 18	2.00 p.m.		A.S.F. Council Meeting
2.30 p.m.	1.30-5.00 p.m.	SESSION 6	SESSION 19	2.30 p.m.		A.S.F. Council Meeting
3.00 p.m.	A.S.F. Council Meeting	AFTERNOON TEA	AFTERNOON TEA	3.00 p.m.	AFTERNOON TEA	AFTERNOON TEA
3.30 p.m.	AFTERNOON TEA	SESSION 7	SESSION 20	3.30 p.m.	BAR OPENS	
4.00 p.m.	A.S.F. Council Meeting	SESSION 8	SESSION 21	4.00 p.m.		
4.30 p.m.	A.S.F. Council Meeting	SESSION 9	SESSION 22	4.30 p.m.		
5.00 p.m.	A.S.F. Council Meeting	SESSION 10	SESSION 23	5.00 p.m.		
5.30 p.m.		BAR OPENS	BAR OPENS	5.30 p.m.	SPELEO SPORTS ENDS	
6.00 p.m.	WELCOME B.B.Q.	Bus leaves Glenara for motels	Bus leaves Glenara for motels	6.00 p.m.	CLOSING	
6.30 p.m.	& BAR OPENS	DINNER	DINNER	6.30 p.m.	& Bus leaves Glenara for motels	
7.00 p.m.	DINNER	Mystery Bus Tour leaves Glenara	6.45 Bus leaves for casino visit	7.00 p.m.	7.15 Bus leaves for cavers' dinner	
7.30 p.m.	BREAKFAST			7.30 p.m.	CAVERS' DINNER AT OLDE TUDOR	
8.00 p.m.	BREAKFAST	BAR CLOSES	BAR CLOSES & "MOLE CREEK			
8.30 p.m.	BAR CLOSES & DYKT SHOW		CAVES, A SLIDE SHOW"			

TUESDAY 5TH JANUARY

7.00 a.m. - 8.30 a.m.	BREAKFAST	at Glenara
8.00 a.m. - 10.00 a.m.	REGISTRATION DESK OPENS	
10.00 a.m. - 10.30 a.m.	CONFERENCE OPENED BY ROBYN WILLIAMS	
10.30 a.m. - 11.00 a.m.	MORNING TEA	
11.00 a.m. - 11.30 a.m.	Session 1	Paper "Environmental Law and Karst" presented by Patrick Larkin
11.30 a.m. - 12.00 noon	Session 2	Paper "Hypothermia" presented by Dr. Phil Ogden
12.00 noon - 12.30 p.m.	Session 3	Paper "Karst Index Update" presented by Peter Matthews
12.30 p.m. - 1.30 p.m.	LUNCH	
1.30 p.m. - 2.00 p.m.	Session 4	Paper "Cave Conservation at Mole Creek" presented by Debbie Hunter and Mick Lichon
2.00 p.m. - 2.30 p.m.	Session 5	Paper "EDM Height Traversing on the Nullarbor" presented by Russell Bridge
2.30 p.m. - 3.00 p.m.	Session 6	Paper "Tasmanian Karst Areas" presented by Kevin Kiernan
3.00 p.m. - 3.30 p.m.	AFTERNOON TEA	
3.30 p.m. - 4.00 p.m.	Session 7	Paper "Recycling Mine Cap Lamps" presented by Neville Michie
4.00 p.m. - 4.30 p.m.	Session 8	Paper "Minimal Impact Caving" presented by Rauleigh Webb
4.30 p.m. - 5.00 p.m.	Session 9	Paper "Chinese Perception of Caves and Karst" presented by Susan White
5.00 p.m. - 5.30 p.m.	Session 10	Paper "The Sanctity of Caves in Stockyard Gully Nature Reserve" presented by Norman Poulter

TUESDAY CONTINUED...

5.30 p.m.	BAR OPENS	
6.00 p.m.	Shuttle bus leaves Glenara for motels	
6.00 p.m. - 7.30 p.m.	DINNER	in Glenara dining room
7.00 p.m.	Mystery Bus Tour leaves Glenara	
8.00 p.m.	BAR CLOSES	

WEDNESDAY 6TH JANUARY

7.00 a.m. - 8.30 a.m.	BREAKFAST	at Glenara
9.00 a.m. - 9.30 a.m.	Session 11	Paper "Australian Sandstone Karst" presented by Robert Wray
9.30 a.m. - 10.00 a.m.	Session 12	Paper "Hydrogeology of the Mt. Anne Karst" presented by Martin Scott
10.00 a.m. - 10.30 a.m.	Session 13	Paper "Cream Puff Caving in Western Victoria" presented by Miles Pierce & Susan White
10.30 a.m. - 11.00 a.m.	MORNING TEA	
11.00 a.m. - 11.30 a.m.	Session 14	Paper "Cream Puff ..." cont. presented by Miles Pierce & Susan White
11.30 a.m. - 12.00 noon	Session 15	Paper "Tourism as Cave Conservation? 90 Years of Photo Monitoring" presented by Elery Hamilton-Smith
12.00 noon - 12.30 p.m.	Session 16	Paper "Caver Impact in Tasmania" presented by Debbie Hunter and Mick Lichon
12.30 p.m. - 1.30 p.m.	LUNCH	
1.30 p.m. - 2.00 p.m.	Session 17	Paper "The Mt. Cripps Karst" presented by Fred Dutton and David Heap
2.00 p.m. - 2.30 p.m.	Session 18	Paper "The Mt. Cripps Karst cont..." presented by Fred Dutton and David Heap
2.30 p.m. - 3.00 p.m.	Session 19	Paper "Observations in Mullamullang Cave in 1990-1991" presented by Neville Michie

WEDNESDAY CONTINUED...

3.00 p.m. - 3.30 p.m.	AFTERNOON TEA	
3.30 p.m. - 4.00 p.m.	Session 20	Paper "South East Karst Province of South Australia" presented by Ken Grimes
4.00 p.m. - 4.30 p.m.	Session 21	Paper "Cave Management Classification System; Issues and Access" presented by Nicholas White
4.30 p.m. - 5.00 p.m.	Session 22	Paper "The Benders Quarry Saga" presented by Mick Lichon
5.00 p.m. - 5.30 p.m.	Session 23	Paper "Expedition to Papua New Guinea" presented by Steve Dickinson
5.30 p.m.	BAR OPENS	
6.00 p.m.	Shuttle bus leaves Glenara for motels	
6.00 p.m. - 7.30 p.m.	DINNER	at Glenara
6.45 p.m.	Bus leaves Glenara for casino visit	
8.00 p.m.	BAR CLOSES	
8.00 p.m. - 9.00 p.m.	"MOLE CREEK CAVES, A SLIDE SHOW" presented by Mole Creek Caving Club, in "Danbury-Payne" Meeting Room (Glenara)	

THURSDAY 7TH JANUARY

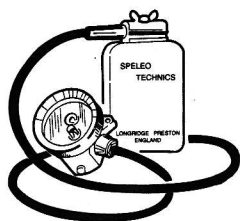
7.00 a.m. - 8.30 a.m.	BREAKFAST	at Glenara
9.00 a.m. - 9.30 a.m.	Session 24	Paper "Hydrology of the Junee-Florentines" presented by Trevor Wailes
9.30 a.m. - 10.00 a.m.	Session 25	Paper "Protecting Caves from People" presented by Norman Poulter
10.00 a.m. - 10.30 a.m.	Session 26	Paper "Post Conference Management Trips to Exit and Kubla Khan" presented by Ian Household
10.30 a.m. - 11.00 a.m.	MORNING TEA	

THURSDAY CONTINUED...

11.00 a.m. - 11.30 a.m.	Session 27	Paper "New Cave Tourism" presented by Debbie Hunter
11.30 a.m. - 12.00 noon	Session 28	Paper "Some Historical Material on Tasmanian Caves" presented by Elery Hamilton-Smith
12.00 noon - 12.10 p.m.	Session 29	Paper "New Cave Areas in the Tarkine Wilderness" presented by Mick Lichon
12.10 p.m. - 12.30 p.m.	CLOSING SESSION	
12.30 noon - 1.30 p.m.	LUNCH	
1.00 p.m.	SPONSORS TRADE DISPLAY OPENS	
1.30 p.m.	SPELEO SPORTS BEGIN	
3.00 p.m. - 3.30 p.m.	AFTERNOON TEA	
3.30 p.m.	BAR OPENS	
5.30 p.m.	SPELEO SPORTS ENDS	
6.00 p.m.	SHUTTLE BUS LEAVES GLENARA FOR MOTELS, BAR CLOSES, TRADE DISPLAY CLOSES	
7.15 p.m.	Shuttle bus leaves Glenara for cavers' dinner	
7.30 p.m.	CAVERS' DINNER AT "OLDE TUDOR"	

You can get the Best caving gear from *wildsports*

Lights from PETZL @ Speleotechnics



The Speleotechnics FX-2 is a rechargeable Ni-Cd headlamp designed by cavers for cavers. Half the weight and size of a conventional miners light. QH main and standard low beam. Completely sealed battery. 10 hrs high beam. Neat & compact car recharger (12V).



The PETZL MEGA features a QH globe and takes 3 x C (11hrs) or 3 x AA cells (3 hrs). With a standard bulb lasts up to 30 hrs on 3 x C alkaline batteries. Focuses from a spot to a beam. Also available Zoom & Micro.



Blue Water Static Ropes (9,10,11mm) and cords (3-8mm). The original and best - Made in Australia



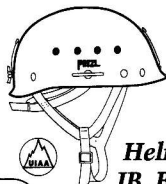
Ascenders from PETZL, CMI, Gibbs, Jumar



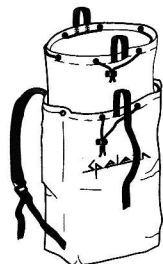
Descenders



Rappel Racks

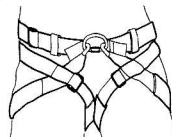


Helmets from PETZL, JB, Blue Water



Spelean Rope pack features heaps of haul loops, handles and drain holes in a durable heavy duty yellow fabric. Ideal for caving or canyoning.

The Spelean Rocksport is possibly the most comfortable harness to abseil and prussik in.



The PETZL Fractio was specifically designed for cavers. It features reinforcing patches on the webbing.

Harnesses from PETZL @ Spelean

**World-Wide Mail Order Service
Tax Free for Overseas Travellers!**

327 Sussex Street, Sydney
Mail to : P.O. Box Q302, Sydney 2000
Ph : (02) 264 2095 Fax : (02) 264 2035

wildsports
ACN 001 413 645

**FREE
Quarterly
Catalogue**

CATALOGUE
PRICE LIST

wildsports

To *wildsports* P.O. Box Q302, Sydney, NSW 2000

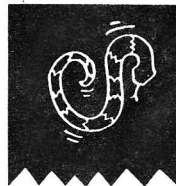
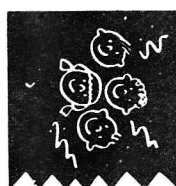
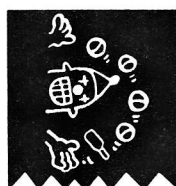
Please send me your latest FREE catalogue

40

Name:

Address:

Postcode:



**WHEN SOMEBODY ASK WHO WOULD PROVIDE
THESE SERVICES AND FACILITIES IF IT
WASN'T FOR THE SHOW SOCIETY?**

I SAID I DIDN'T KNOW!

**THE ROYAL LAUNCESTON SHOW SOCIETY
COMMITTED TO THE LAUNCESTON COMMUNITY**

- * Provides a home to some 20 specific interest community groups at peppercorn rents.
- * Pays out \$40,000 in prize money each year.
- * Attracts almost 10,000 entries in over 20 special show sections offering exhibitors the opportunity to compare and display their skills and talents.
- * Does not have any financial shortfalls covered by State or Local Government unlike other exhibition facilities.
- * Attracts 1000's of visitors and their \$ \$ \$ to Launceston for the show and other special events — these people must eat, sleep and spend in Launceston!
- * Spends over \$750,000 directly in the Launceston business district annually.
- * Privately owns and maintains the 78 acre show ground without any funding or physical assistance from local or State Governments.

**I DIDN'T KNOW
THAT THE**

ROYAL LAUNCESTON SHOW SOCIETY

CAVE GRADES

TYPE

Horizontal

Caves that have no S.R.T. (single rope technique) in them; may involve some climbing.

GRADES

Easy: Cave passages are walk in walk out with no climbing. Trip duration up to four hours.

Medium: Some climbing or care required to negotiate a cave. Duration of a trip up to eight hours.

Hard: Physically demanding, all party members are to be experienced cavers. Entails climbing, squeezes and extreme care of formations. Duration of trip can exceed eight hours.

Vertical

Trips to these caves require use of S.R.T.

GRADES

Easy: No rebelay, pitches up to twenty metres long. Trip duration up to four hours. Grading as for horizontal, for areas where pitches are not negotiated.

Medium: Extended pitches, up to forty metres. Some free climbing may be necessary. Trip duration up to eight hours.

Hard: Participants must be able to cross rebelay. Physically demanding with care needed to negotiate the cave. Pitch lengths can exceed one hundred metres. Trip duration can be in excess of eight hours.

WARNING

MOST CAVES IN TASMANIA CONTAIN STREAMS OR AREAS THAT ARE WET. CLOTHING MUST BE SUCH THAT IT WILL KEEP YOU WARM IF WET. BEWARE OF HYPOTHERMIA!

POST CONFERENCE TRIPS

As you read this some of you will have already sampled the delights of Tasmania's plentiful supply of caves. Those that could not make it earlier, or even those who have already been, don't panic - there is still plenty of caving to be done after the conference.

Post conference trips will be arranged at the conference. Sheet detailing the cave, leader, type, grade and number of people on trip will be put out. Interested participants will be asked to list their name on the sheet until trip is full.

Some areas that will be listed are:

Exit Cave Survey trips under the guidance of National Parks Wildlife and Heritage (N.P.W.H.).

Frenchmans' Cap & West Coast

For those who want to see some of Tasmania's wilderness and explore remote areas for karst. Need to be fit and experienced in winter walking as it can snow at any time of the year in this area.

Kubla Khan Work parties to assist in cleaning and track marking.

Mt. Cripps Caving and walking trips, range from easy to hard, vertical and horizontal.

Mole Creek A variety of trips are possible in this area.

More trips are expected to be organised during the conference so check the trip lists daily.



The Launceston Walking Club Inc.

"SEE TASMANIA FIRST"

Producers of "Do You Know Tasmania".

Regular scheduled walks for all skill levels through Tasmania's world famous wilderness. Meetings every second Wednesday. Walk with us during your stay. New members welcome.

BREAM CREEK VINEYARD

AWARD WINNING TASMANIAN WINES
- at affordable prices!

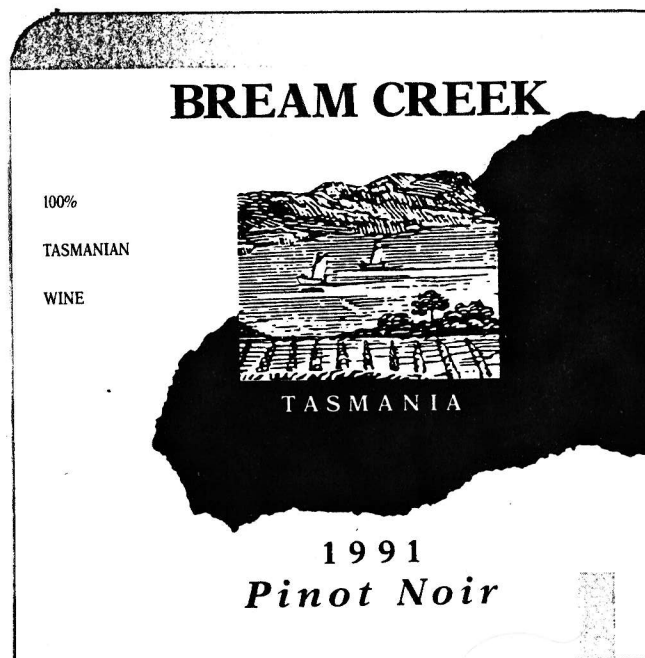
Our five wines currently available share seven
medals between them!

But you can be the judge – Bream Creek Wines will
be available for tasting at the Conference.

We also mail order to every part of Australia, so
write or call for your catalogue to:

Fred Peacock

655 Main Road
Berriedale Tas. 7011
Ph. (002) 49 3231



Join us for the adventure of a lifetime.

Australian Geographic is the quarterly journal of the Australian Geographic Society and is dedicated to supporting scientific research, protecting and fostering a love for our environment and natural heritage, encouraging the spirit of discovery and adventure and spreading knowledge of Australia to Australians and the world.

Since it was launched in 1985, Australian Geographic has given over \$5 million towards scientific research, adventure, the environment and worthwhile community projects including TAS TROG 1993.

If you would like to help us have a positive influence in Australia, subscribe today. You will receive four issues each year filled with articles on Australia and Australian achievement, illustrated by magnificent photographs and diagrams. You will also be able to discover the same places through our detailed maps and the poster that accompany each issue.

To subscribe, complete and return this form or simply phone our Subscription Department on (02) 450 2300

Please send me Australian Geographic and enrol me as a member of the Australian Geographic Society.

☐ 1 Year \$37.60 ☐ 2 Years \$75.20 (Overseas: \$49.60 a year surface mail – \$69.60 a year airmail)
This subscription will commence with the next issue.

☐ Please renew my subscription automatically each year and charge my credit card.

I understand I may cancel my subscription at any time and receive a refund of the unused portion.

Name _____

Street _____

Suburb/Town and Country _____

Postcode _____

My cheque/money order in enclosed for \$ _____

☐ Charge my credit card for \$ _____

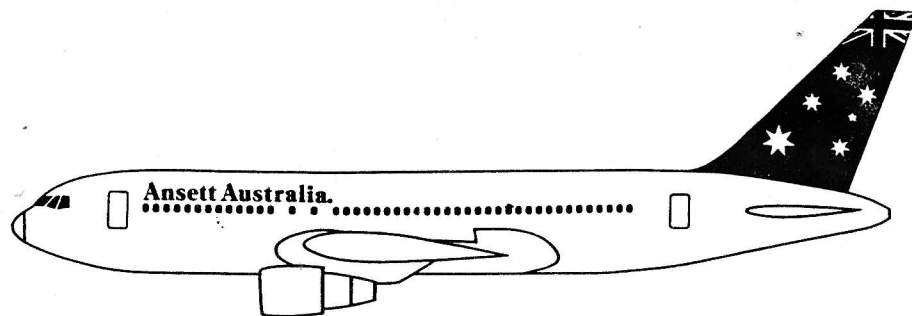
☐ Bankcard ☐ Visa Card No. _____

☐ MasterCard Cardholders Signature: _____ DV

Post your coupon with your payment to:

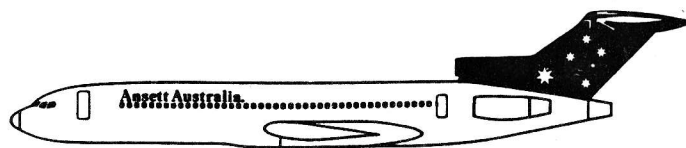
Australian Geographic Subscriptions, PO Box 321, Terrey Hills, NSW 2084

Ansett Australia.



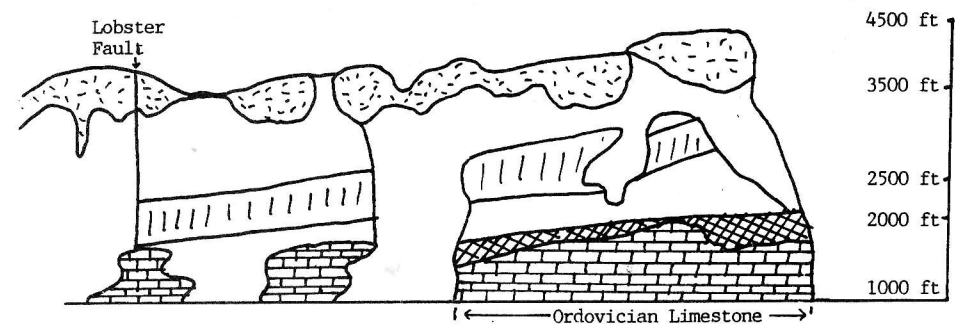
Ansett Travel Service.

More Than an Airline Office!



Ansett Australia.

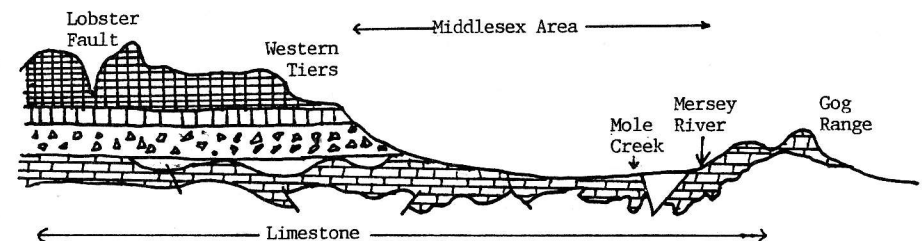
MOLE CREEK GEOLOGY



Surface Geology of the Western Tiers, Tasmania

(P.Richards)

As you can see from this cross section of the Western Tiers E W plane that the limestone extends for some miles under the dolerite cap of these mountains. The average thickness of limestone is about 600 to 700 feet.



Geological Section of Western Tiers—Gog Range

(P.Richards)

The only possible access to the limestone beneath this dolerite cap seems to lie in the faulting patterns ... the most likely fault being the Lobster Fault.

STRATIGRAPHY

Recent:	Alluvial, outwash plain deposits, scree residual soil.
Tertiary:	Basalt flows, tuffs and agglomerates.
Jurassic:	Dolerite.
Triassic:	Freshwater sandstone and shale.
Permian:	Siltstone and shale with coal, variable mudstones and sandstones.

Unconformity

Devonian:	Granite.
Silurian:	Crotty quartzites and sandstones.
Ordovician:	Gordon limestones, quartzite, conglomerate.
Cambrian:	Quartz and quartz feldspars, porphyries, lavas, tuffs brecca, slates, sandstones.
Precambrian:	Quartz or Garnet, mica schist.

Main Rocks

1. Gordon Limestone.
Dense, blue, grey on weathering, massive sometimes sheared. Contains pyrite and graphite, also calcite modules. Dips steeply, uneven weathering, strike ridges - Karst topography, Occurrence-widespread-lowland.
2. Ordovician.
(Tubicola) Quartzite-member of Caroline Ck beds - name from worn casts.
3. Jurassic Dolerite
Caps Tiers and intruded also Permian unconformity.

4. Tertiary Basalt
Mainly on plateau west of Mole Creek. Types: massive columnar jointed, close jointed, tuffs contain clay and quartzite sand sediments.
5. Scree
On slopes of Tiers. Dolerite nature, sometimes added Permian sediments.
6. Residual Soil
Limestone forms chocolate brown soils of considerable depth-valuable when drained mixed with alluvial gravel and sands.
7. Granite
Devonian with aplite dykes.

STRUCTURES

1. Folding
Limestone forms a complex, east-west synclineorium pitching east. Barren Tier is an anticline in rocks of differing hardness. Overlying limestone has been removed exposing quartzite hardness. Overlaying limestone has been removed exposing quartzite - present hill surface corresponds to fold surface - smaller drag folding is found near thrust faults - Allum cliffs - small scale (intense) folding in Precambrian Quartzites near Fisher River.
2. Faults
Limestone has flowed over the Ordovician rocks that have been strongly compressed by N-S activating forces. The limestone flowed on thrusting the quartzite which consequently ruptured and over thrust. Thrust fault is well seen at Allum cliffs - upthrown block is drag folded and faulted, down thrown block is little disturbed. Tear fault running N-S controls Mersey route above to Liena.

3. Glaciation
Mersey valley above Arm River - U-shaped valley-walls of quartzite, valley contains glacial debris in which river is entrenched. Glacial spill over zones can be distinguished from frost shattered sections on Tiers.
4. Igneous Forms
Granite as a batholith with aplite dykes along the contact between Precambrian and Caroline Creek beds.

Reprinted from "Troglydye" Vol 1, No.7

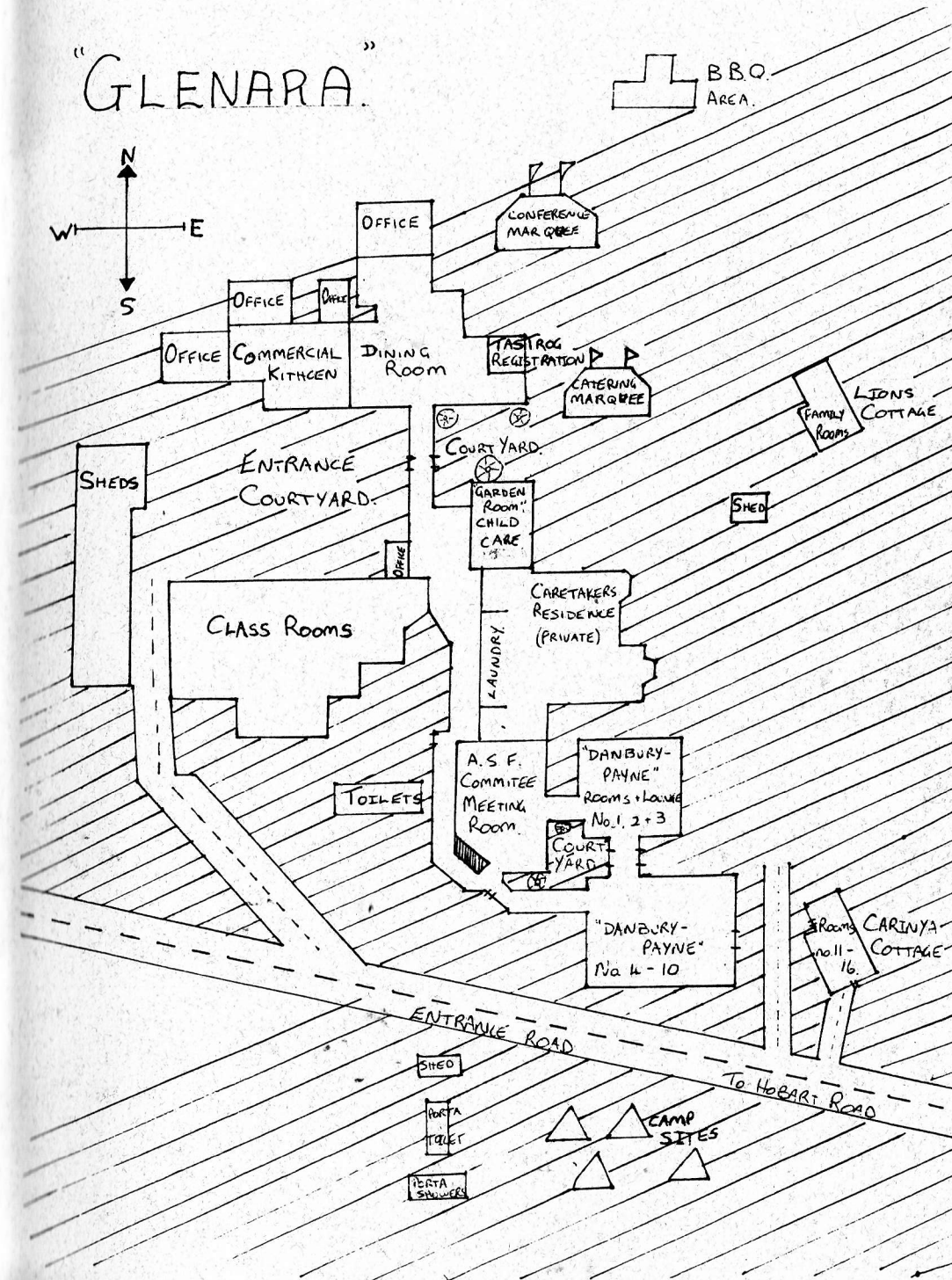
Glenara

Work Preparation Projects.
390 Hobart Rd, Youngtown, Launceston.
Phone (003) 447911 Fax (003) 448620

**Serving the Launceston Community from
1921-1993**

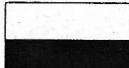
- * Now a quality Training Provider.
- * On 70 tranquil acres within the Launceston urban area.
- * Training rooms, trade workshops, horticultural facilities.
- * Trainers, training aids, equipment and computer laboratory.
- * Conference facilities, including catering and accomodation.

A member of the SkillShare Network Funded by the Federal Government through The Department Of Employment, Education and Training.



If you're on your way down, our 'static' ropes will ensure you have a safe landing. Kinnears have developed a new range of Kernmantel Safety Lines with stretch, greater strength, better handling, and more 'feel'. We have also created a new range of reflective ropes that are highly visible in low light or darkness. These Safety Lines

KINNEARS



A Boral Company

are the result of many years of research and development and have been rigorously tested in the laboratory and in the field. So if you're involved in lifesaving, rescue, personal safety, military deployment situations, or you just like going down, visit your local retailer, call Kinnears on (03) 688 6200, or drop us a line.

KIN-022

INNOVATIVE IDEAS FROM KINNEARS.

HEAD OFFICE: Boral Kinnears Pty. Ltd., 130 Ballarat Road, Footscray, Vic. 3011. Fax: (03) 689 9630

