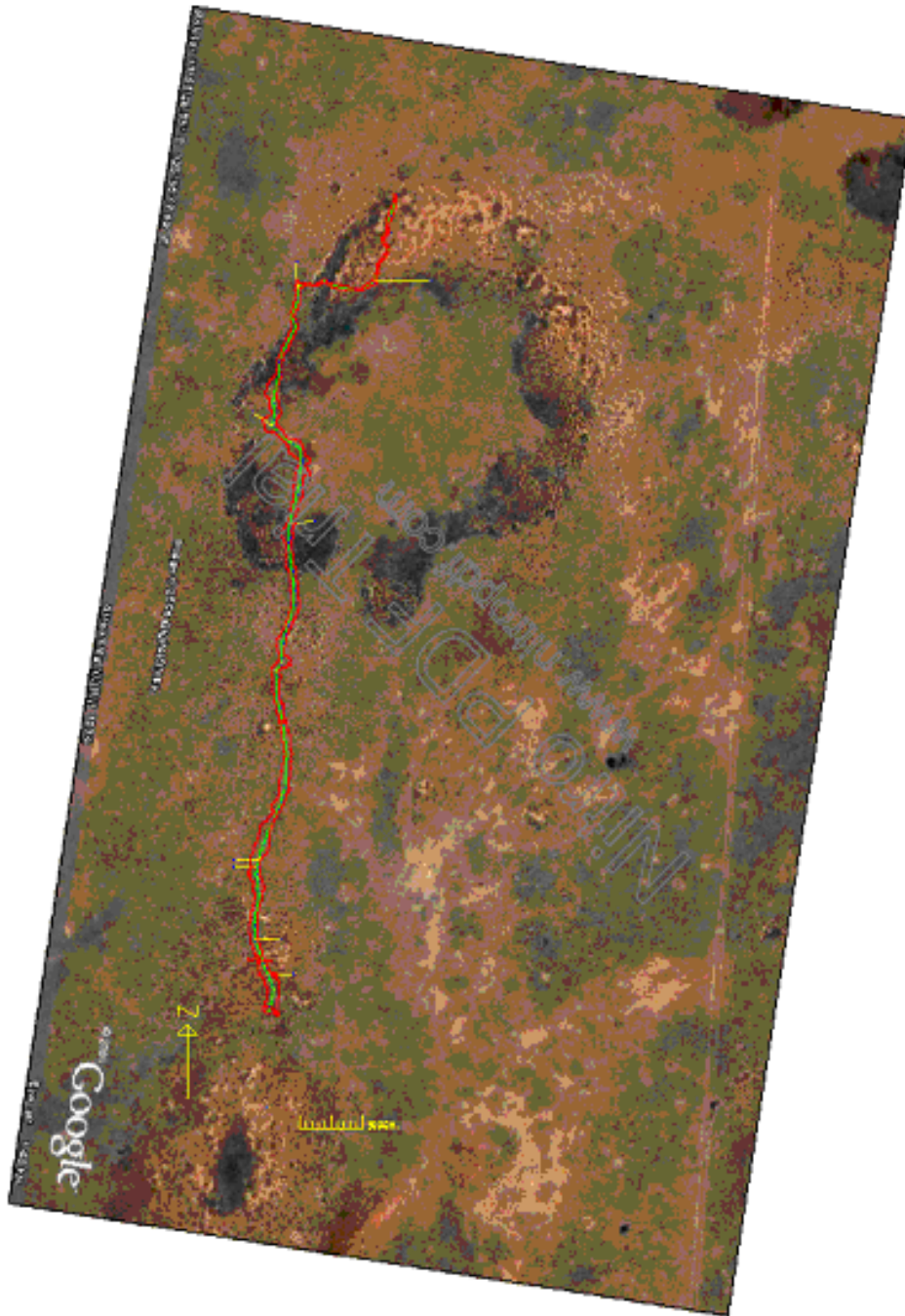


Cocklebiddy, old and new techniques together

Tim Payne

There was a time that Cocklebiddy was considered the Everest of cave diving, but those days have passed and visits to Toad Hall, the dry chamber nearly 4km into the cave are now relatively routine. But despite the ease with which Toad Hall can now be reached few trips have managed to repeat the feats of the early explorers who explored the third sump. This year three divers using techniques and equipment resurrected from the early explorers made it to Toad Hall with enough gear to camp and conduct a series of dives in the third sump allowing them to complete a map of the sump.



Preliminary overlay of the 3rd sump of Cocklebiddy which was mapped during the trip, and which is draped over Google Earth imagery.

This talk discussed the techniques and the modifications to the equipment which made this trip possible as well as the findings and map that was produced.