

**Appendix E - Perseverance Pays (or why being stubborn can sometimes be useful). IB-232 D'Entrecasteaux River Third Sink, (into IB-14 Exit Cave), Ida Bay Karst, Tasmania.**



*IB-232 D'Entrecasteaux River Third  
Sink*

*(into IB-14 Exit Cave).*

*Ida Bay Karst, Tasmania.*

**Diving attempts from resurgence pool inside Exit Cave.**



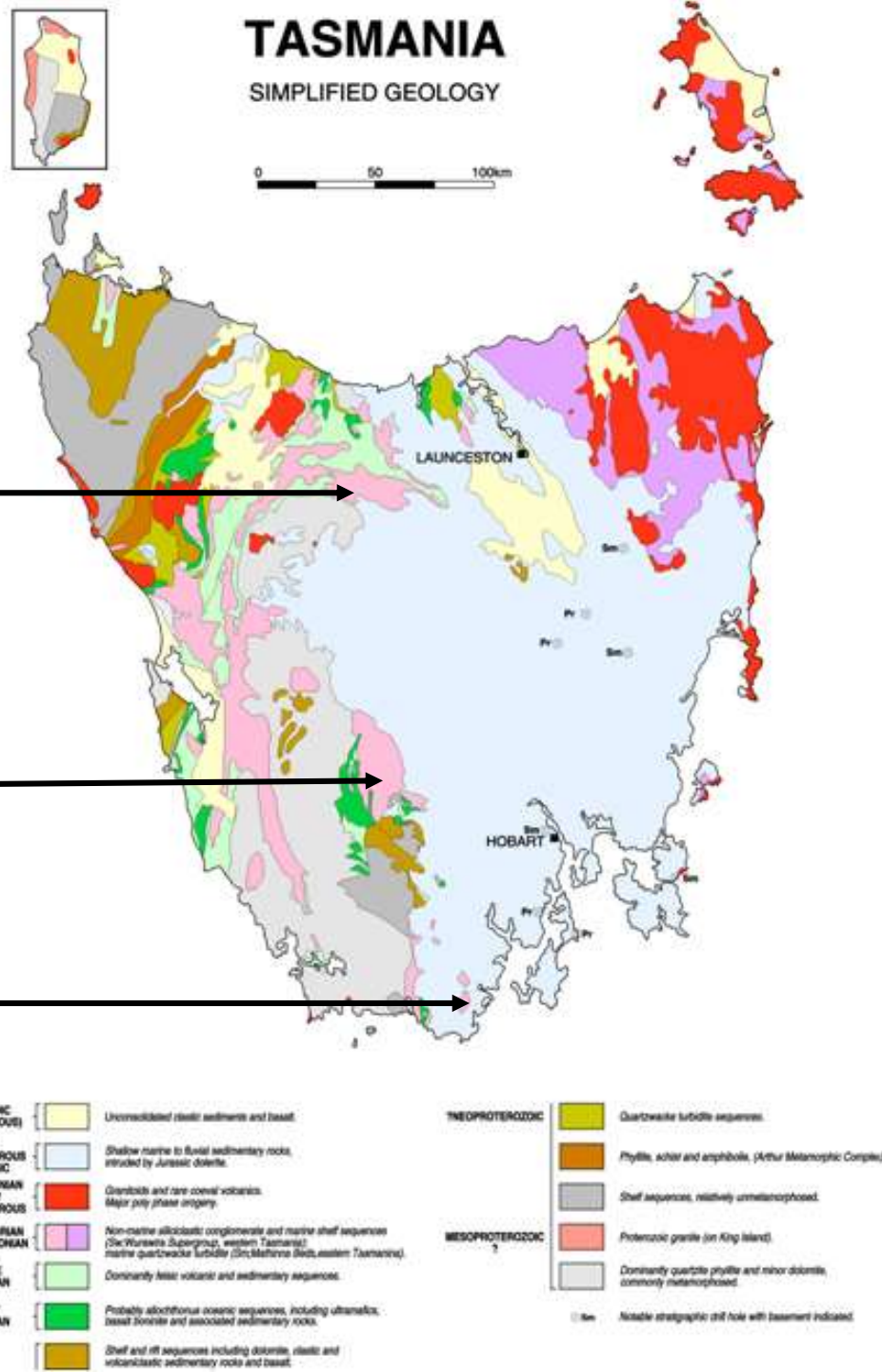


Karst Areas

MC Mole Creek

JF Junee Florentine

IB Ida Bay



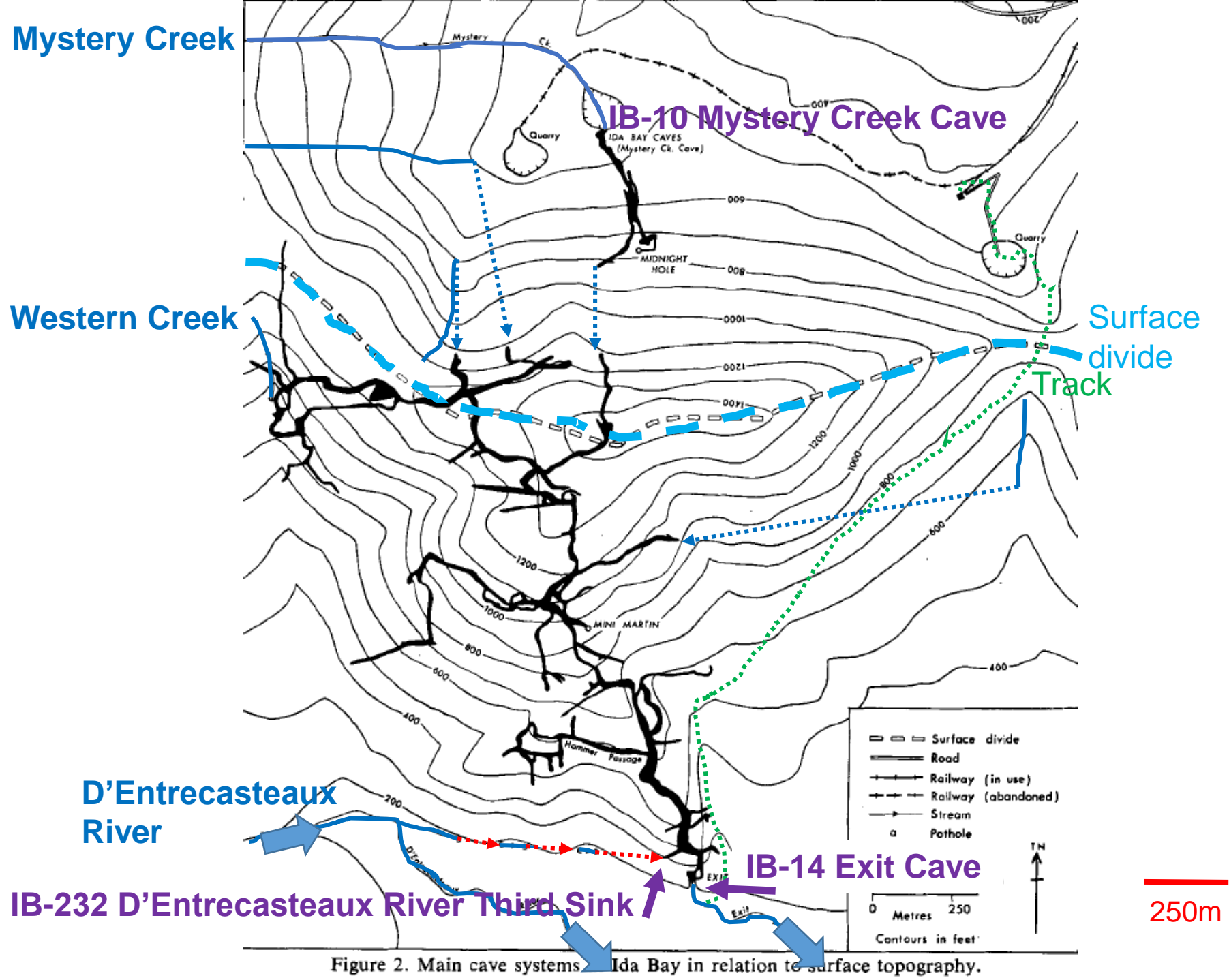


Figure 2. Main cave systems Ida Bay in relation to surface topography.



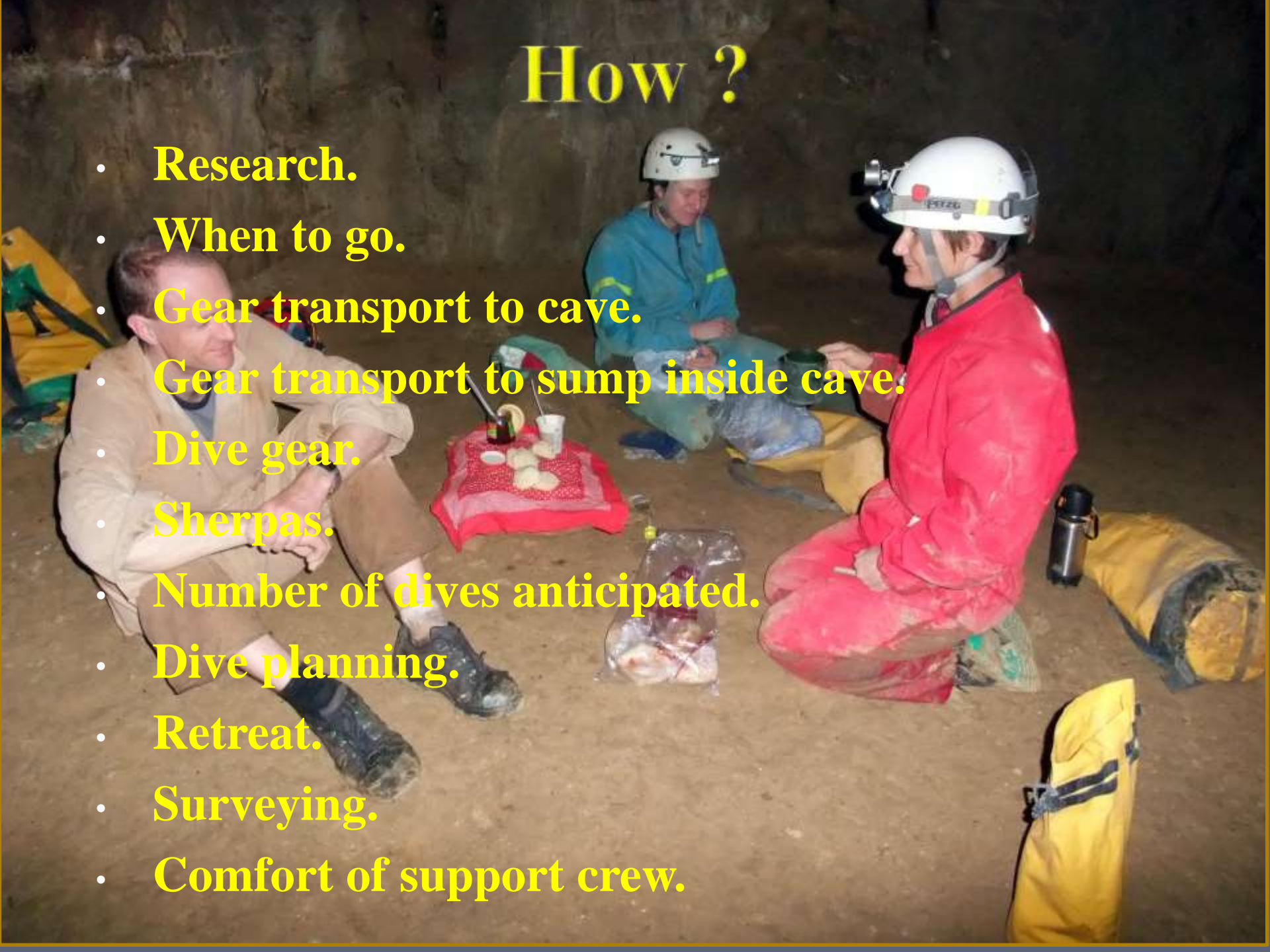






# How ?

- Research.
- When to go.
- Gear transport to cave.
- Gear transport to sump inside cave.
- Dive gear.
- Sherpas.
- Number of dives anticipated.
- Dive planning.
- Retreat.
- Surveying.
- Comfort of support crew.





## Trip one - frustration and disappointment







D'Entrecasteaux Passage, Exit Cave





## Trip two - the other end

The main passage named Sign of the Times (SOTT)











## Trip three - dive attempt two

S  
U  
C  
C  
E  
S  
S



F  
I  
N  
A  
L  
L  
Y



## Trip Four - exploration & surveying.













Exit Cave





The Ball Room, Exit Cave





The Ball Room, Exit Cave





The Ball Room, Exit Cave







Trip five - continuation of exploration & surveying



# Dives.

- Found sump II.
- Explored beyond - large swimming passage to rockpile.
- Explored beyond - crawling, very muddy passage (usually sump).
- Surveyed sump II to start.
- Found sump III.
- Explored beyond - swimming to rockpile both ends of passage.
- Looked for bypass of rockpiles.
- Surveyed from sump III.



# Surveying.

- ▣ Solo.
- ▣ Poor visibility.
- ▣ Some time constraints.
- ▣ **Instruments:**
  1. Never Say Die (chamber) - Disto X (laser distance measure with electronic compass and clinometer).
  2. IB232 to rockpile- Disto X
  3. Elsewhere - depth gauge, knotted line and compass.  
Line plot only.

IB-14 Exit Cave

D'Entrecasteaux Sumps

Southern Tasmanian Caveveers

Map 7IB14.STC365

Survey: J McKinnon 1/2013

knotted line,

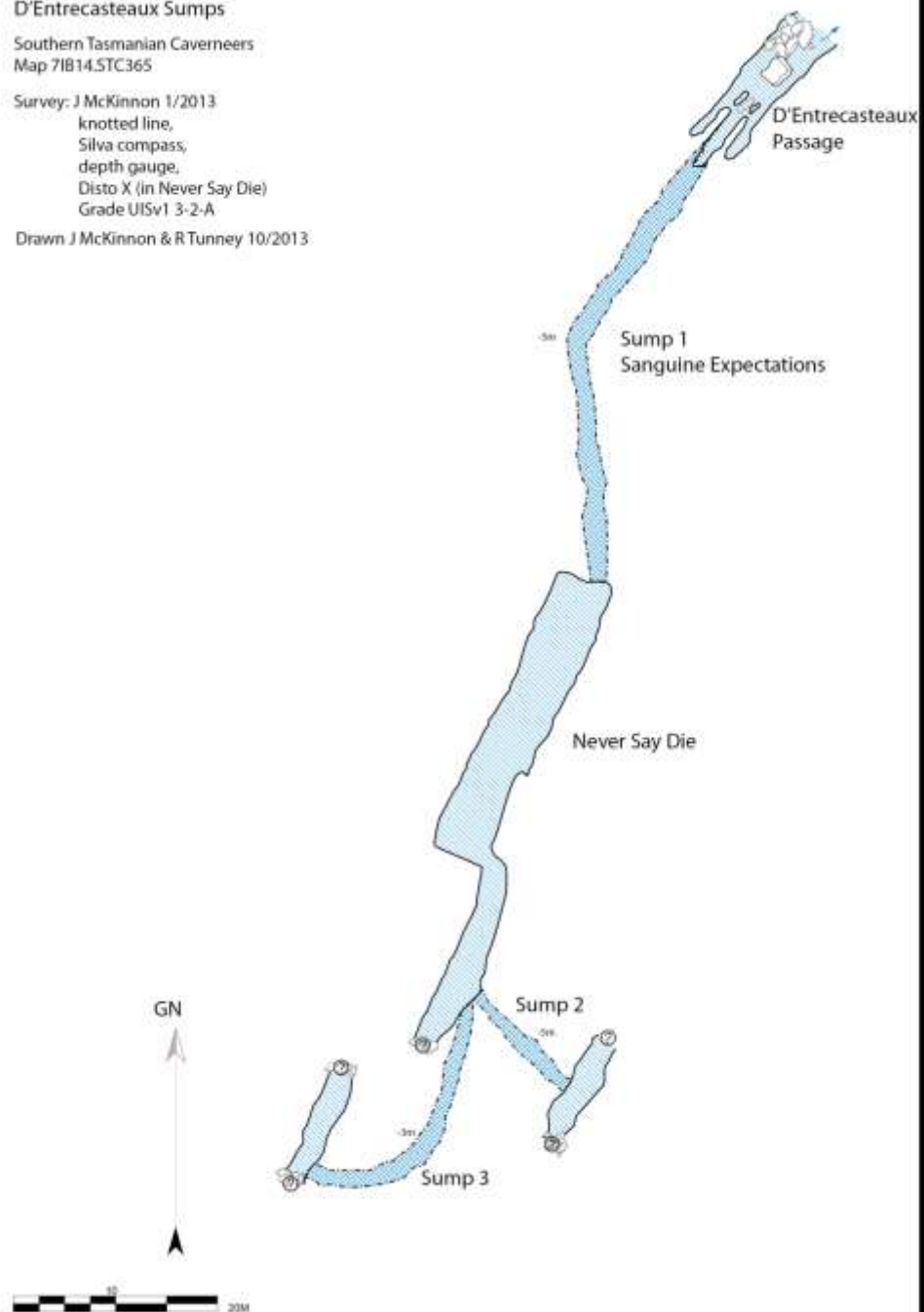
Silva compass,

depth gauge,

Disto X (in Never Say Die)

Grade ULSv1 3-2-A

Drawn J McKinnon & R Tunney 10/2013





IB232

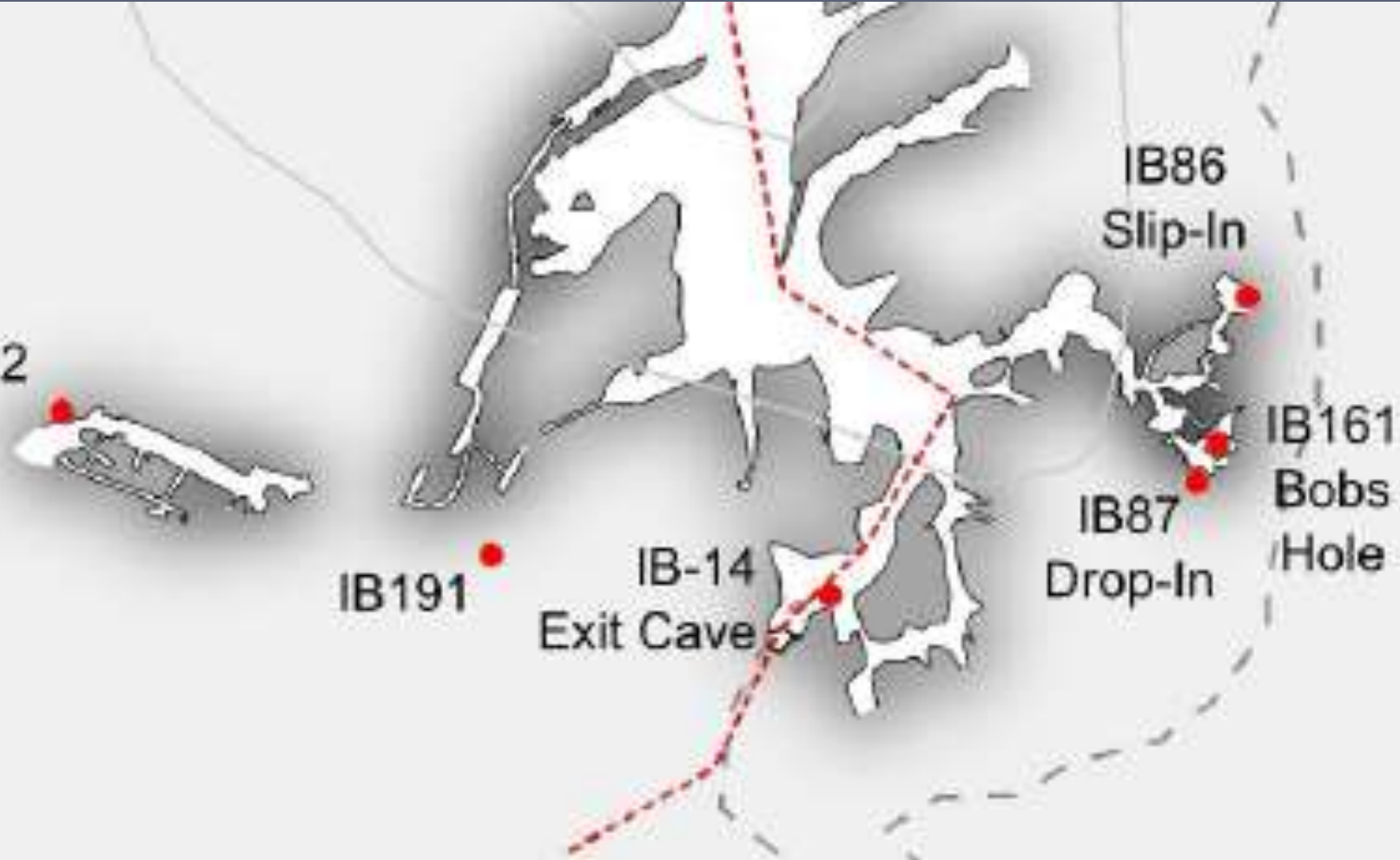
IB191

IB-14  
Exit Cave

IB86  
Slip-In

IB87  
Drop-In

IB161  
Bobs  
Hole







# Overview:

- Six trips
- Four dive trips
- Permanent line laid into SE entrance
- Exploration line left in-situ
- 150m passage surveyed
- Connection not made
- Leads poor but not exhausted



A photograph of four cavers in a cave. One caver on the left is wearing a red suit and a red helmet with a headlamp. Another caver in the center is wearing a blue and white suit and a white helmet, looking down. A third caver on the right is wearing a blue and yellow suit and a white helmet, standing. A fourth caver on the far right is wearing a red suit and a red helmet, sitting. The cave walls are dark and rocky. The text 'Continuation Xmas-New Year 2014' is overlaid in a yellow, serif font.

# Continuation Xmas-New Year 2014

## **The Plan:**

**More detailed sketching in above-water parts.**

**Surveying beyond sumps II & III**

**More searching for route around rockpile.**

(Searching for Anaspides)



# What actually happened

I gained a dive/exploration/surveying buddy, which was good

We had NO sherpas, and two divers' worth of gear, which wasn't good

We found the way through the rockpile to SOTT on the first day

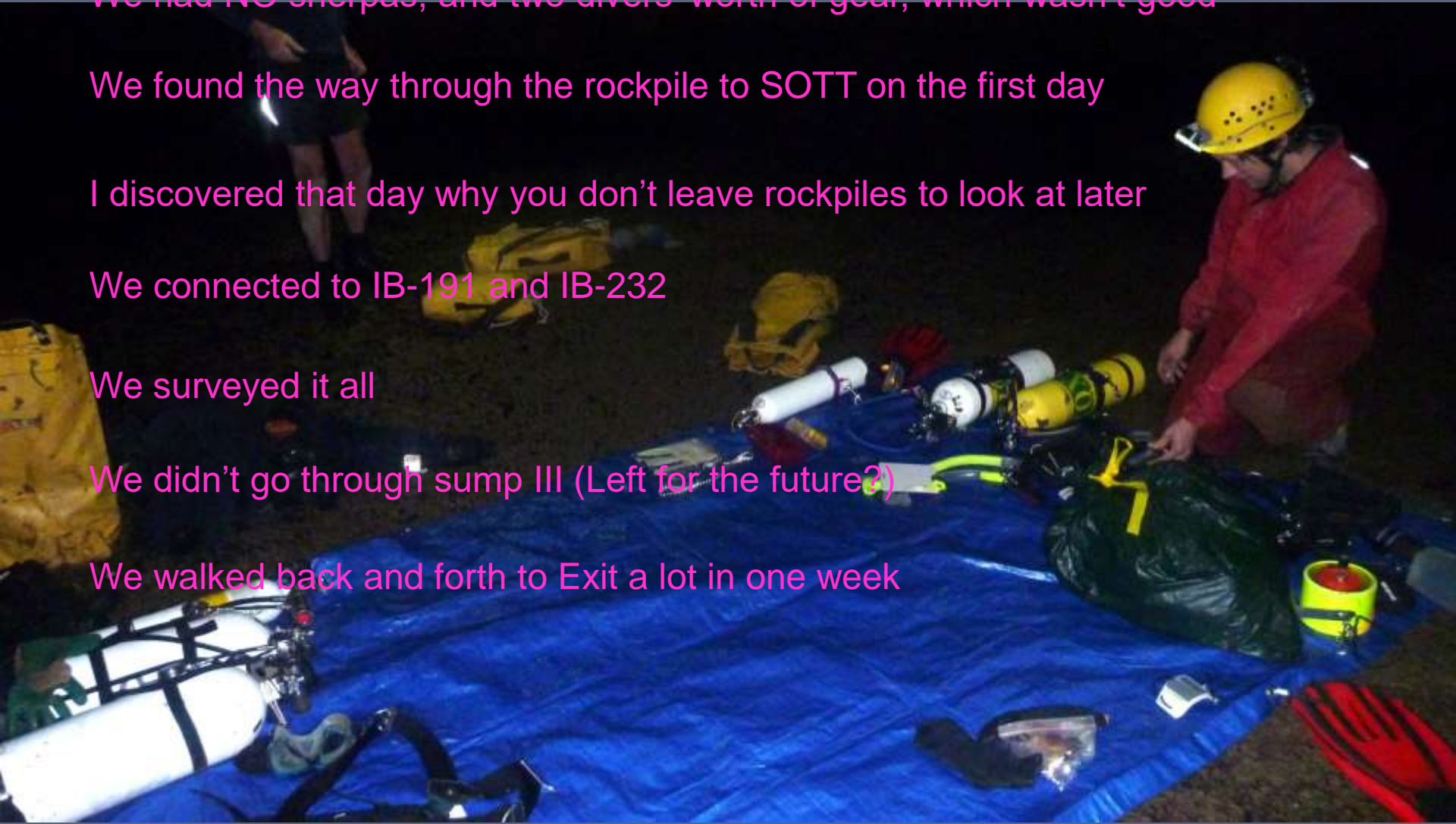
I discovered that day why you don't leave rockpiles to look at later

We connected to IB-191 and IB-232

We surveyed it all

We didn't go through sump III (Left for the future?)

We walked back and forth to Exit a lot in one week

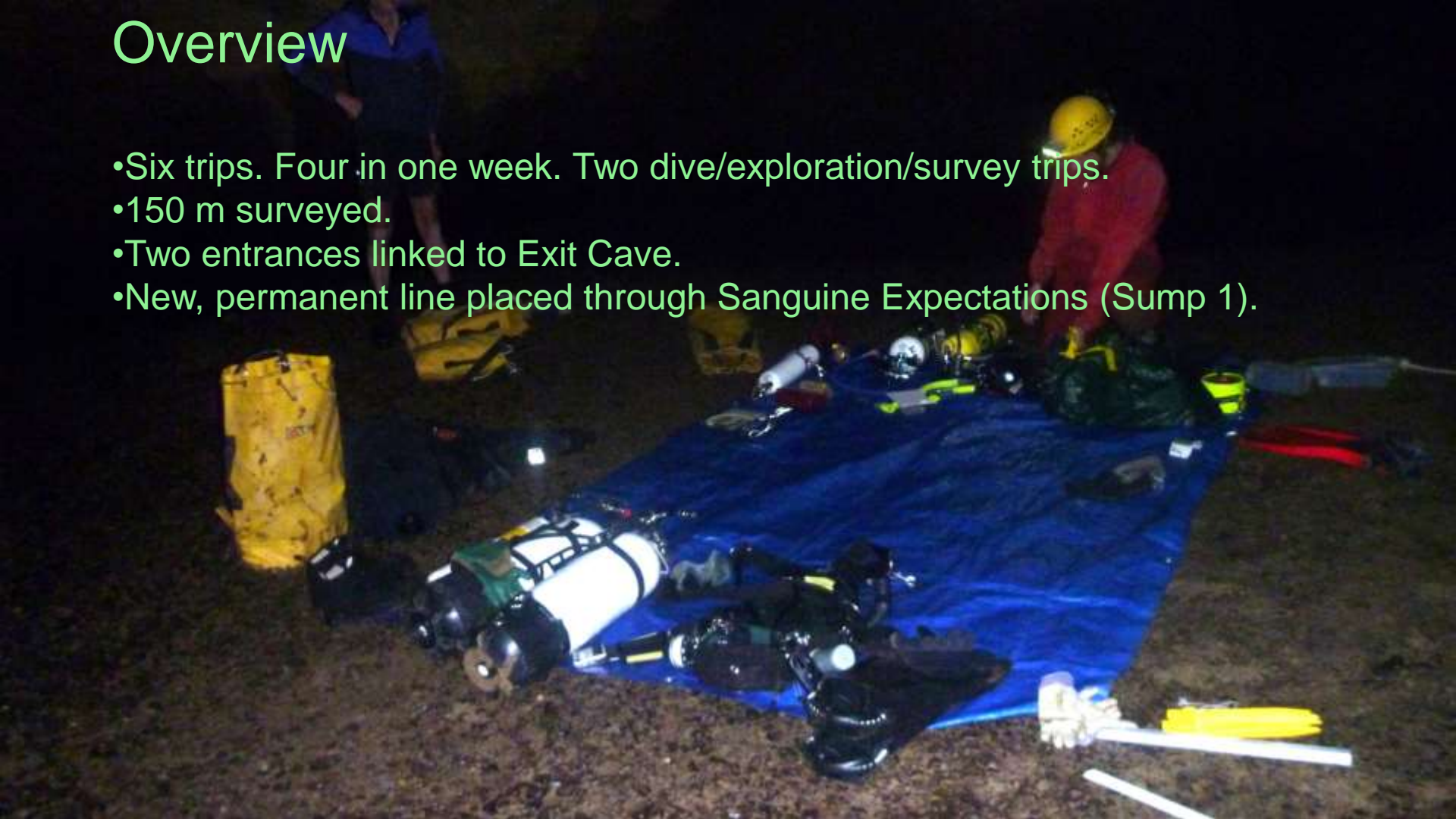




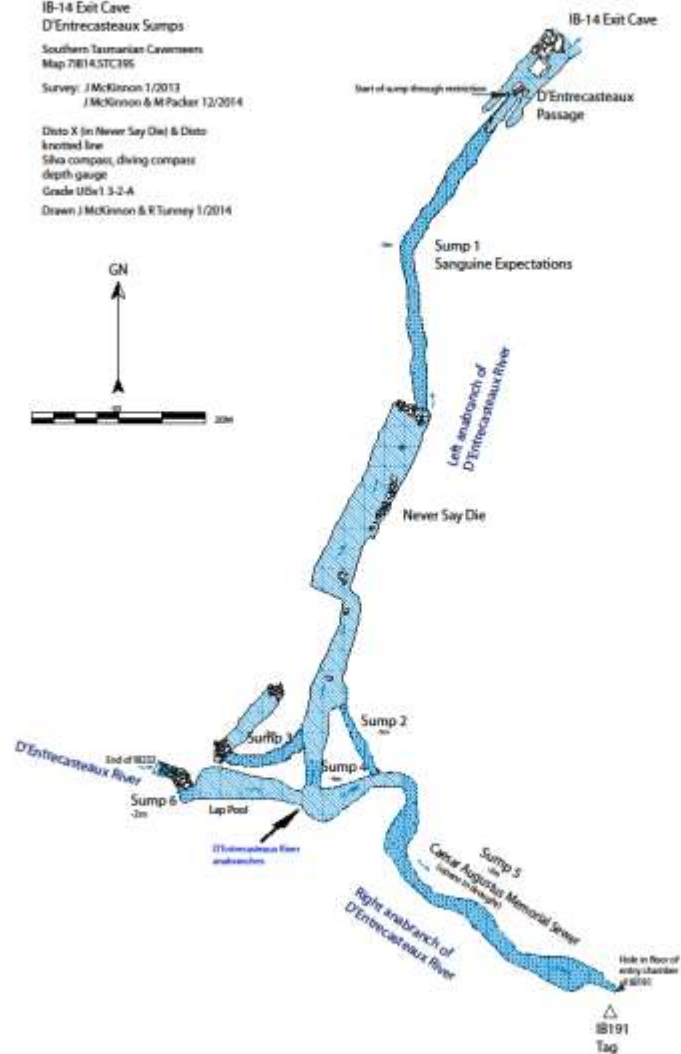
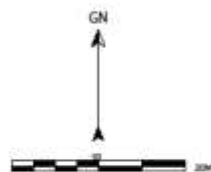


# Overview

- Six trips. Four in one week. Two dive/exploration/survey trips.
- 150 m surveyed.
- Two entrances linked to Exit Cave.
- New, permanent line placed through Sanguine Expectations (Sump 1).



IB-14 Exit Cave  
 D'Entrecasteaux Sumps  
 Southern Tasmanian Caverns  
 Map 70814-STC195  
 Survey: J McKinnon 1/2013  
 J McKinnon & M Packer 12/2014  
 Disto X (in Never Say Die) & Disto  
 knotted line  
 Silva compass, diving compass  
 depth gauge  
 Grade Ute1 3-2-A  
 Drawn J McKinnon & R Turney 1/2014









## Results

The end of D'Entrecasteaux Passage in *IB-14 Exit Cave* has been linked to both *IB-191* and *IB-232 D'Entrecasteaux River Third Sink*.

The D'Entrecasteau River Anabranh has been found to anabranh while underground. One anabranh flows into D'Entrecasteaux Passage, the other anabranh flows through *IB-191* and resurges in the rockpile at the entrance to *IB-14 Exit Cave*.



Special thanks to:  
Ric Tunney  
Michael Packer

Thanks to:  
Chris Coxson  
Johnathan Esling  
Mark Euston  
Alan Jackson  
Fraser Johnston  
Pierre-Dominique Putallaz  
Laura Putallaz  
Amy Robertson  
Ian Stewart

Photo credits:  
Johnathan Esling  
Fraser Johnston  
Janine McKinnon  
Ric Tunney

