

# ASF

# NEWSLETTER

Spring, 1976 No. 73



## THE AUSTRALIAN SPELEOLOGICAL QUARTERLY

In Ho Hum Cave, Mole Creek — Photo by Frank Brown Jnr.

Registered in Australia for transmission by post as a periodical — Category "B"

AUSTRALIAN SPELEOLOGICAL FEDERATION  
P.O. Box 388  
Broadway N.S.W. 2007

**50c**  
Recommended



# EXECUTIVE OFFICERS & MEMBER SOCIETIES

Please write direct to the Officer concerned, as the P.O. Box address is only a clearing address.

## EXECUTIVE COMMITTEE OFFICERS :

President NICHOLAS WHITE  
Vice President ANDREW SPATE  
LEX BROWN  
ANDREW SKINNER  
Secretary ANTHONY CULBERG  
Assistant Secretary ROBIN STEENSON  
Treasurer JOHN TAYLOR

123 Manningham St., Parkville, Vic. 3052  
1 Hoskins St., Hall, A.C.T. 2600  
139 Victoria Ave, Chelmev Qld. 4068  
1 Randall St., Sandy Bay, Tas. 7005  
P.O. Box 36, Lindisfarne, Tas. 7015  
10 Binda St., West Merrylands N.S.W. 2160  
C/- D.M.R., P.O. Box 399, Bega, N.S.W. 2550

## CONVENORS OF COMMISSIONS :

Bibliography GREGORY MIDDLETON  
Biological ELERY HAMILTON-SMITH  
Cave Safety LLOYD ROBINSON  
Speleo Handbook PETER MATTHEWS  
International Relations ELERY HAMILTON-SMITH  
JOHN DUNKLEY  
Library BRIAN LeFOE  
Longest & Deepest Caves ROSS ELLIS  
Newsletter LAURIE MOODY  
Conservation ADRIAN DAVEY  
Survey Standards IAN WOOD  
"Australian Speleology" ANDREW PAVEY

P.O. Box 269, Sandy Bay, Tas. 7005  
P.O. Box 36, Carlton South, Vic. 3053  
167 Mt. Keira Rd., Mt. Keira, N.S.W. 2500  
66 Frogmore Crescent, Park Orchards, Vic. 3114  
Address — as above  
3 Stops Place, Chifley, A.C.T. 2606  
C/- D.M.R., P.O. Box 696, Orange, N.S.W. 2800  
14/10 Fourth Avenue, Campsie, N.S.W. 2194  
13 Mason St., Claremont, Tas. 7011  
36 Davis Ave, South Yarra, Vic. 3141  
P.O. Box 174 North Ryde N.S.W. 2073  
1/2 Grace Campbell Cres., Hilldale, N.S.W. 2036

## CONVENORS OF AD HOC COMMITTEES :

Publications ANTHONY CULBERG & LEX BROWN  
Cave Documentation PETER MATTHEWS  
Cave Tourism ELERY HAMILTON-SMITH

Addresses as Above  
66 Frogmore Crescent, Park Orchards Vic. 3114  
P.O. Box 36, Carlton Sth., Vic. 3053

Membership Structure BENJAMIN NURSE  
Pacific Conference IAN WOOD

P.O. Box 174 North Ryde N.S.W. 2113

## CONVENORS OF STATE LIAISON COUNCILS

N.S.W. IAN BOGG  
Tas. ANDREW SKINNER

54 B, Mitchell Street, Parkes, N.S.W. 2870  
1 Randall St., Sandy Bay, Tas. 7005

## COMMITTEE MEMBERS

### ACT. :

CANBERRA SPELEOLOGICAL SOCIETY  
NATIONAL UNIVERSITY CAVING CLUB

18 Arabana St., Aranda ACT. 2614  
C/- Sports Union, Australian National University, 2600

### N.S.W. :

BAPTIST CAVING ASSOCIATION  
BLUE MOUNTAINS SPELEOLOGICAL CLUB  
HIGHLAND CAVING GROUP  
ILLAWARRA SPELEOLOGICAL SOCIETY  
KEMPSEY SPELEOLOGICAL SOCIETY  
MACQUARIE UNI. SPELEO. INVESTIGATION GROUP  
METROPOLITAN SPELEOLOGICAL SOCIETY  
N.S.W. INSTITUTE OF TECHNOLOGY SPELEOLOGICAL SOCIETY  
ORANGE SPELEOLOGICAL SOCIETY  
SYDNEY SPELEOLOGICAL SOCIETY  
SYDNEY UNIVERSITY SPELEO. SOCIETY  
UNI. OF N.S.W. SPELEOLOGICAL SOCIETY

299 Roberts Rd., Greenacre, N.S.W. 2190  
P.O. Box 37, Glenbrook, N.S.W. 2773  
P.O. Box 154, Liverpool, N.S.W. 2170  
P.O. Box 94, Unanderra, N.S.W. 2526  
2 Albert St., Kempsey, N.S.W. 2440  
C/- Sports Assoc., Macquarie Uni, Nth Ryde, N.S.W. 2113  
P.O. Box 2, Crows Nest, N.S.W. 2065  
C/- The Union, P.O. Box 123, Broadway, N.S.W. 2007  
P.O. Box 752, Orange, N.S.W. 2800  
P.O. Box 198, Broadway, N.S.W. 2007  
Box 35, The Union, Sydney Uni, N.S.W. 2006  
Box 17, The Union, Uni of N.S.W., Kensington, N.S.W. 2033

### QUEENSLAND :

CENTRAL Q'LAND SPELEO. SOCIETY  
UNI. OF QLD. SPELEOLOGICAL SOCIETY

P.O. Box 538, Rockhampton, Qld. 4700  
The Union, Uni. of Q'land, St. Lucia, Qld. 4067

### SOUTH AUSTRALIA :

CAVE EXPLORATION GROUP (Sth. Australia) Inc.

C/- South Aust. Museum, Nth. Terrace, Adelaide, S.A. 5000

### TASMANIA :

NORTHERN CAVERNEERS  
SOUTHERN CAVING SOCIETY  
TASMANIAN CAVERNEERING CLUB

P.O. Box 315, Launceston, Tas. 7250  
P.O. Box 121, Moonah, Tas. 7009  
P.O. Box 416, Sandy Bay, Tas. 7005

### VICTORIA :

VICTORIAN SPELEO. ASSOCIATION

G.P.O. Box 5425 CC, Melbourne, Vic., 3001

### WESTERN AUSTRALIA :

WESTERN AUSTRALIA SPELEOLOGICAL GROUP

P.O. Box 67, Nedlands, W.A. 6009

### ASSOCIATE MEMBERS :

BERMAGUI SPELEOLOGICAL ASSOCIATION  
CHILLAGOE CAVING CLUB  
ENDEAVOUR SPELEOLOGICAL ASSOCIATION  
LAUNCESTON SPELEO. CLUB  
PAPUA NEW GUINEA CAVE EXPLORATION GROUP  
PENINSULA SPELEOLOGICAL GROUP  
SPELEOLOGICAL RESEARCH GROUP W.A.

P.O. Box 16 Bermagui Sth N.S.W. 2541  
7 Martyn St., Cairns, Qld., 4870  
P.O. Box 63, Miranda, N.S.W. 2228  
P.O. Box 120, Hadsen, Tas. 7256  
C/- M. Bourke, D.P.I., Keravat, East New Britain, P.N.C.  
P.O. Box 250, Mona Vale, N.S.W. 2103  
P.O. Box 120, Nedlands, W.A. 6005

### HANDBOOK SALES :

KEN LANCASTER

19 Selworthy Ave., Sth Ogleigh, Vic. 3166



# ASF NEWSLETTER

I.S.S.N.-0313-413X \*

Number 73, Spring 1976

## CONTENTS

<u>EDITORIAL</u>	*	*	*	*	*	*	*	*	*	*	*	*	*	*	*	1
<u>NOTICES &amp; NEWS</u>	*	*	*	*	*	*	*	*	*	*	*	*	*	*	*	2
<u>ANEW AUSTRALIAN DEPTH RECORD - DOWN THE BIG THREE</u>	*	*	*	*	*	*	*	*	*	*	*	*	*	*	*	3
<u>WANTED: EXPLORERS FOR PAPUA NEW GUINEA'S CAVES</u>	*	*	*	*	*	*	*	*	*	*	*	*	*	*	*	6
<u>SPELEO-GIGS</u>	*	*	*	*	*	*	*	*	*	*	*	*	*	*	*	8
<u>PUBLICATIONS</u>	*	*	*	*	*	*	*	*	*	*	*	*	*	*	*	8
<u>BOOK REVIEW</u>	*	*	*	*	*	*	*	*	*	*	*	*	*	*	*	12
<u>WHO'S WHO ON THE SPELEO SCENE</u>	*	*	*	*	*	*	*	*	*	*	*	*	*	*	*	13
<u>DOWN UNDER ALL OVER</u> - News from around the Societies	*	*	*	*	*	*	*	*	*	*	*	*	*	*	*	14

\*\*\*\* - \* - \* - \*\*\*\*

### EDITORIAL

Pleased to see that most members seem to be apparently satisfied with the general format of the last few issues. After a great deal of experimentation in the early issues, I have finally arrived at the conclusion that some sort of standardisation has now been achieved.

From time to time, suggestions and ideas are forthcoming from members and occasionally prompt slight changes in the format. Two of these suggestions have been implemented in this particular issue. The centre section which comprises pages 7 - 10, will now consist of advertisements, a section called "Speleo-Gigs" which deals with coming events, major expeditions etc., publications available, changes of address, classifieds and back issues. Therefore, if you are one of those people who are offended by advertising etc., then you can simply remove this section from your issue and dispose of it accordingly. On the other hand, if you would like to sell items of equipment, bits and pieces, advertise a major expedition etc., then forward this information to me and we will publish it free of charge!

It has also been suggested that the present deadline dates be changed to ensure that four issues are released within the twelve month period. The new deadline dates appear beneath this editorial. Note: club news and other information should be forwarded to me prior to the 30th November as we intend to have issue No.74 in your hands before the ASF Conference in Canberra.

Owing to limited space, only two major articles will be appearing in future issues and members and contributors are advised that issue No.74 already has its quota.

Response to "Down Under All Over" is extremely pleasing but there are still quite a few clubs that are not informing us of their activities. Since the inception of the club delegate system the following clubs have yet to establish contact in this regard. These clubs are:- BCA, CQSS, ESA, MSS, NC, NSWITSS, PNGCEG, PSG, SRGWA and UQSS.

As previously advised, distribution has been undertaken by Robin Steenson and I would like to take this opportunity of thanking him for his valued efforts. Don't forget that we are here to inform you of the latest developments on the Australian caving scene but we can't do this without your full co-operation.

\*\*\*\* - \* - \* - \*\*\*\*

DEADLINE DATE FOR ISSUE No.74

November 30th. 1976

CONTENTS ISSUE No.74

Notes on the Invertebrate Fauna of Yarrangobilly Caves - Elery Hamilton-Smith.

Cave Areas and Karst Regions of South-Eastern New South Wales - Bob Nicoll & John Brush.

\*\*\*\* - \* - \* - \*\*\*\*

Editor ASF Newsletter: Laurie Moody, 13 Mason Street, Claremont, Tasmania. 7011  
Distribution & Back Issues: Robin Steenson, 10 Binda Street, West Merrylands, N.S.W. 2160

\* International Standard Serial Number



## NOTICES & NEWS

### NEW RULES FOR THE PUBLICATION OF ARTICLES IN "CUADERNOS DE ESPELEOLOGIA"

Cuadernos de Espeleologia is a publication specialized in speleological themes and related areas with an issue frequency that is approximately annual and it has recently reached a great diffusion. As it is very accepted by the foreign speleology groups, the Committee intends to give it a larger diffusion. For this reason it has written the present innovations in its "Author Rules" in order that all the foreign groups may include its works, provided that they adjust their themes to the referred "Author Rules" which will be sent under petition.

(The above information reached the Editor via John Dunkley, who in turn received it from Jose Leon Garcia, Chief of the Committee, Seccion de Espeleologia, "Sautuola" de Santander. (Spain))

### JUNEE CAVE DECLARED A STATE RESERVE

A well known Tasmanian outflow cave, Junee Cave (JF8), situated a short distance from the logging township of Maydena was recently declared a state reserve. (See cover photo and cave description ASF N/L No.53 P.9) The following proclamation was issued -

#### A PROCLAMATION

"In pursuance of sections 14 (1) and 15 (1) of the National Parks and Wildlife Act 1970, I, the Administrator of the Government of the State of Tasmania and its Dependencies in the Commonwealth of Australia, acting with the advice of the Executive Council, do, by this my proclamation -

- (a) declare the Crown land that is specified in Schedule I to this proclamation and shown on the plan set forth in Schedule II to this proclamation to be a conservation area; and
- (b) declare that area to be a State Reserve.

Given under my hand this 31st day of August 1976.

G. S. M. GREEN, Administrator.

By His Excellency's Command,  
NEIL BATT, Minister for Education, Recreation and Federal Affairs."

### SPELEO HANDBOOK

Brief progress report: Despite appearances (or lack thereof), the Handbook project has not been in the doldrums. Quite the opposite in fact. All this year has seen very heavy work "behind the scenes" getting the computer programmes running properly. The volume of work has been much larger than anticipated, hence the delay. However, at the time of writing (end June) I have the input programme\* tested and operational, and Russell Kaaden has the output programme\* well advanced.

While Russell is finishing, I will be checking the data supplied for general compliance with the system and having it punched and fed into the computer. It was necessary to finish the input programme first to find out whether the format of the forms needed any changes before punching. Some minor ones are in fact necessary but will easily be done during the above checking. Once the data is in, the rest of the book should follow quite rapidly.

- \* The input programme solidly checks the data on the forms (whether new caves or updates) for common sense and punching accuracy and stores it efficiently in the main cave file in the computer. The output programme takes the newly updated and coded version of each cave from the computer and expands it into suitable English for direct use by phototypesetting machine. The purpose is to slash the huge manual effort at present needed for regular publication of updated cave information on 4,000 plus caves.

Peter Matthews.

### CAVCONACT 76

Information concerning the 11th Biennial Convention of the Australian Speleological Federation to be held at the Australian National University, Canberra, 27-30 December 1976, has been sent to all ASF members. If you did not receive this well presented booklet contact Cavconact 76, C/- 18 Arabana Street, Aranda, A.C.T. 2614 as soon as possible if you wish to attend.

### AUSTRALIAN HERITAGE COMMISSION

According to information received, there are still a lot of outstanding questionnaires at large. Elery Hamilton-Smith and the VSA have copies left if you did not receive one. This study is most important so please take care when filling in the forms and send them off as soon as possible.



# A NEW AUSTRALIAN DEPTH RECORD- DOWN THE BIG THREE

by Randall King

"ASF NEWSLETTER STOPPRESS STOP NOW CONFIRMED WE SET NEW AUSTRALIAN DEPTH RECORD IN KHAZAD DUM ON 160476 STOP ROCKPILE PAST MAIN SUMP PUSHED TO FIND TWO FURTHER SUMPS STOP DEPTH ESTIMATED 327M TO 337M STOP CAVERS HERE ECSTATIC STOP DETAILS FOLLOW STOP .... RANDALL KING"

The proposal for the Easter trip itinerary was seemingly preposterous - fly to Tasmania after work from Sydney on Thursday night and drive to the Junee-Florentine hut, spend the next few days consecutively bottoming Australia's three deepest caves, drive 150 miles north to Mole Creek, run a lightning trip into what must rate as Australia's most beautiful cave, Kubla Khan, and then catch the plane back from Launceston in time for dinner on Monday evening in Sydney! Well, being unable to convince Neil Hickson, Peter Ruxton and Stuart McCann of the complete insanity of the idea, the rest of us decided to join them on this "hopeless" enterprise.

The nine N.S.W. cavers from the Sydney Speleological Society and the Sydney University Speleological Society who embarked on this venture - Stuart McCann, Peter Ruxton, Neil Hickson, Steve Nieuwendyk, Julia James, Dave Martin, Peter Winglee, Roger Lewis and myself - were all experienced and trained in Single Rope Techniques (SRT); this undoubtedly was the keystone to our success. Such an undertaking would have been absolutely unthinkable using ladders. But lest one should think that this is to be taken lightly, the hazards of relying on single ropes for this amount of caving are significant. Only by an almost religious attention to the standard of equipment, the placement of rope protectors, the positioning of belays with safety tie-off's, and an individual knowledge of the correct techniques can this risk be minimised.

Pre-trip organisation was tackled on an expedition basis. For example, the logistics for this four day excursion were quite boggling. Half a mile of high quality 11 mm rope, 25 traces, 50 rope protectors, 2 bolting kits, 15 mining batteries with rechargers and 10 rope packs which we designed and manufactured ourselves, were required for a start, all of which had to be carried as part of our personal baggage allowances on the planes! Indeed, one freight officer couldn't believe his eyes when Ruxton's pack topped the scales weighing 170lb.! Total costs, including only return airfare, 2 hire cars (from a company completely innocent of our intentions as to their use) and food (bought in Tasmania) were \$200 each. Expenses incurred from photography, equipment and the purchase of waterproof clothing made the total much higher still for some individuals.

KHAZAD-DUM (JF4-5) - DWARROWDELF (JF14) Depth- 322 metres.

Albert Goede kindly drove out from Hobart on Friday morning and helped us to locate and trackmark the Dwarrowdelf entrance in the rainforest, which is only an inconspicuous 5 x 2m hole in the ground belying the depths that lie beneath. In fact, this series of shafts had only been completely ascended and descended once previously; although one initial Tasmanian laddering exploration party had once run out of ladder on the last pitch. Julia, Ruck, Roger and Dave stayed to descend JF14, whilst those remaining hiked to the main JF4 Khazad-dum doline entrance a  $\frac{1}{2}$  mile away.

The Khazad-dum route consists of entering through the large doline into some superb serpentine passages and dropping quickly via four pitches (12', 92', 30', 70') into the relatively low gradient main streamway passage. For the rest of the cave, one must wade in the stream, descending the series of small waterfall pitches (20', 30', 15', 25', 25', 30') before arriving at the final 135' pitch, which drops into the large bottom chamber of Khazad-dum. By contrast, the Dwarrowdelf route consists of five larger pitches (70', 40', 180', 120', 220') situated almost vertically on the top of each other, with the resultant hazard to cavers of having parts of the surrounding "cored rock" falling from many hundreds of feet above. The last pitch finishes near the top of a spectacular 120' high talus pile, above the bottom chamber of Khazad-dum.

With all the ropes for the cave pre-packed and marked in Sydney, the main sump was reached by our K.D. route party in only two hours, leaving plenty of time for exploration while awaiting the arrival of the Dwarrowdelf group, who were placing two bolts for belays at the top of the last 220' pitch. After a fruitless systematic search for other leads near the main sump, Neil, Stuart, Peter W. and myself with our digging trowel set off through the passage at the top of the sandbank above the main sump, mentioned in the ASF News1. 70 ("Is K.D. Really Finished?"). Stuart and Peter headed straight on to a rockpile, whilst Neil and I turned right into a muddy, grovelly passage, and then, left, into a small rockpile-walled chamber, from which we could hear Stuart and Peter on the other side. Frantically, we pulled a rock aside to reveal a hole just possible to squeeze through. Here we rejoined. The other rockpile route had consisted of three tight squeezes, but which in the circumstances had been made light work of.

This is the sort of stuff every caver dreams of - 1,000ft underground in Australia's deepest cave pushing on down virgin stream passage. A few hundred feet on, the passage emerged into the side of a

Continued Page 6,



THE BIG THREE Cont;

much larger passage with a  $1\frac{1}{2}$  cusec stream - almost too good to be true! Alas, a hundred feet further on around a corner, a large sump, 3m wide by 6m long, was reached. To say that excitement was rife might understate the case. It was certainly a shared moment those there will always remember. Estimates on the depth of this Sump II varied from between 20' to 50' lower than Sump I - in fact, it is probable that the Sump II stream originated from Sump I. At this stage, we were joined by Roger, Ruck and Dave, who had independently made their way through the rockpile. A thorough and intensive search for a higher level route around the sump brought forth no new leads from this region. However, a new Australian depth record had been set.

Returning to the smaller streamway, a rockpile on the side was climbed upwards to a chamber, and then down again to - lo and behold - yet another sump, Sump III. A stream could be heard entering the sump from under an overhang, however for the want of a 10m rope and a wetsuit, this had to be left uninvestigated. The general consensus is that this sump is of the same level as Sump I - although surveying will be required before this can be ascertained, as it may well be lower.

Three leads had to be left in this area. Firstly, the Sump III stream itself, secondly, an unexplored rift from the chamber above the sump, and thirdly, a sandbank (yes, sandbank), which would require climbing equipment to scale, perched above the chamber at a steeply inclined angle. These hold good prospects for further exploration!

Upon returning to the main sump, our illusions to grandeur were temporarily shattered by Julia devastating revelation that she thought she had already visited Sump II in December 1972. It was not until a week later in Sydney that further consultation showed this claim to be doubtful. With letters flying back and forth between Sydney and Hobart, Peter Shaw confirmed the new discovery, Peter having guided Julia on the 1972 trip. It appears Julia had crawled to the main sump via the streamway, rather than over the sandbank on the previous visit, and this had led to the confusion.

For the exit from the bottom, both teams swapped routes. The Dwarrowdelf ascent took 7 hours for five people to prussik and de-rig - well, the less said about that the better. On the bottom 220' pitch, a rock came hurtling down and hit Neil on the knee, highlighting this hazard. Then, on the 180' pitch a design fault in our rope packs showed up - the hauling straps tore off one whilst it was being hauled up, and Stuart had to go down and back up again to retrieve the pack. When trying to haul up the 180' rope, it jammed at the bottom, requiring a further round trip by Neil to free it. However, the K.D. route group managed their very cold and wet journey out in only 5 hours - we had been unable to rig the bottom two waterfall pitches out of the water! So, after a successful 14 hours underground, the last of us arrived back to a welcome fire at the Junee homestead.

CAULDRON POT (264m) - TASSY POT (231m)

The plan for Saturday and Sunday was this. We would split into two groups again, each rigging a cave on the Saturday, and then swapping over caves on the Sunday and de-rigging. Obviously, this presented great advantages by only having to rig or de-rig once each day. However, the only drawback was that this made it absolutely critical that both parties had to bottom each cave on the Sunday to retrieve the ropes, irregardless of people being tired etc. Our worries in this regard proved needless, luckily.

Cauldron Pot was rigged by Neil, Julia, Dave and Roger on their 8 hour return trip to the sump. Cauldron Pot must certainly be regarded as Australia's hardest, coldest and most technical cave, but by the same token, the most satisfying to achieve. After a spectacular 41m abseil beside the river into the entrance doline, one squeezes into the start of Bills Bypass. Bills Bypass is not easy to forget. A 45 degree inclined bedding plane squeeze 80m deep and 100m long with sharp, jagged sides which ruined every pair of overalls on the trip. Each of the caves pitches lies beneath where the stream rejoins, so all gear had to be carried down, and worse, back up again through this!

The next three pitches (15m, 11m, 14m) are all directly in the 2 deg. Celsius fast flowing stream (with the most dubious of belay points!). Finally, at the top of the last 35m pitch is the infamous "diagonal bolt traverse" - a series of three bolts designed to hang the rope free of the suicidal waterfall, and which requires crossing with jumars prior to abseiling. Neil rigged the three bolts with the aptly named "hero loops" ("we forgot the hangers - left them back at the hut") and, remarkably, they lasted for the trip, although some cutting comments were made on one loop sitting halfway off the head of the bolt. On Sunday, the remainder of us quickly progressed to the bottom. The Saturday group, much to their delight, had conveniently neglected to mention Bills Bypass or the state of the bolts ("we didn't want to spoil the challenge"), but we soon found out for ourselves. The bottom pitches were a protection nightmare! A home manufactured rope protector slipped off a sharp ledge on the 35m pitch and the outer sheath of the rope was severely abraded as a result! But nevertheless, the trip was completed in 9 hours.

The impressive doline entrance to Tassy Pot wasn't found until 4PM on Saturday, after spending the day hiking through rainforest 5 mile up the wrong forestry road. Disappointingly, this meant we had to abandon the last big pitch for want of time. However, the dangerous log jam at the top of the second pitch was safely re-arranged as a natural belay after two abortive attempts at placing bolts in the shaly limestone. (Ruxton - "this one's pretty solidly in, but I'll give it a quick test first - ahh, well!!") Sunday, however, saw the other team successfully bottom the cave, including the biggest pitch of the trip - 250ft!



## THE BIG THREE Cont;

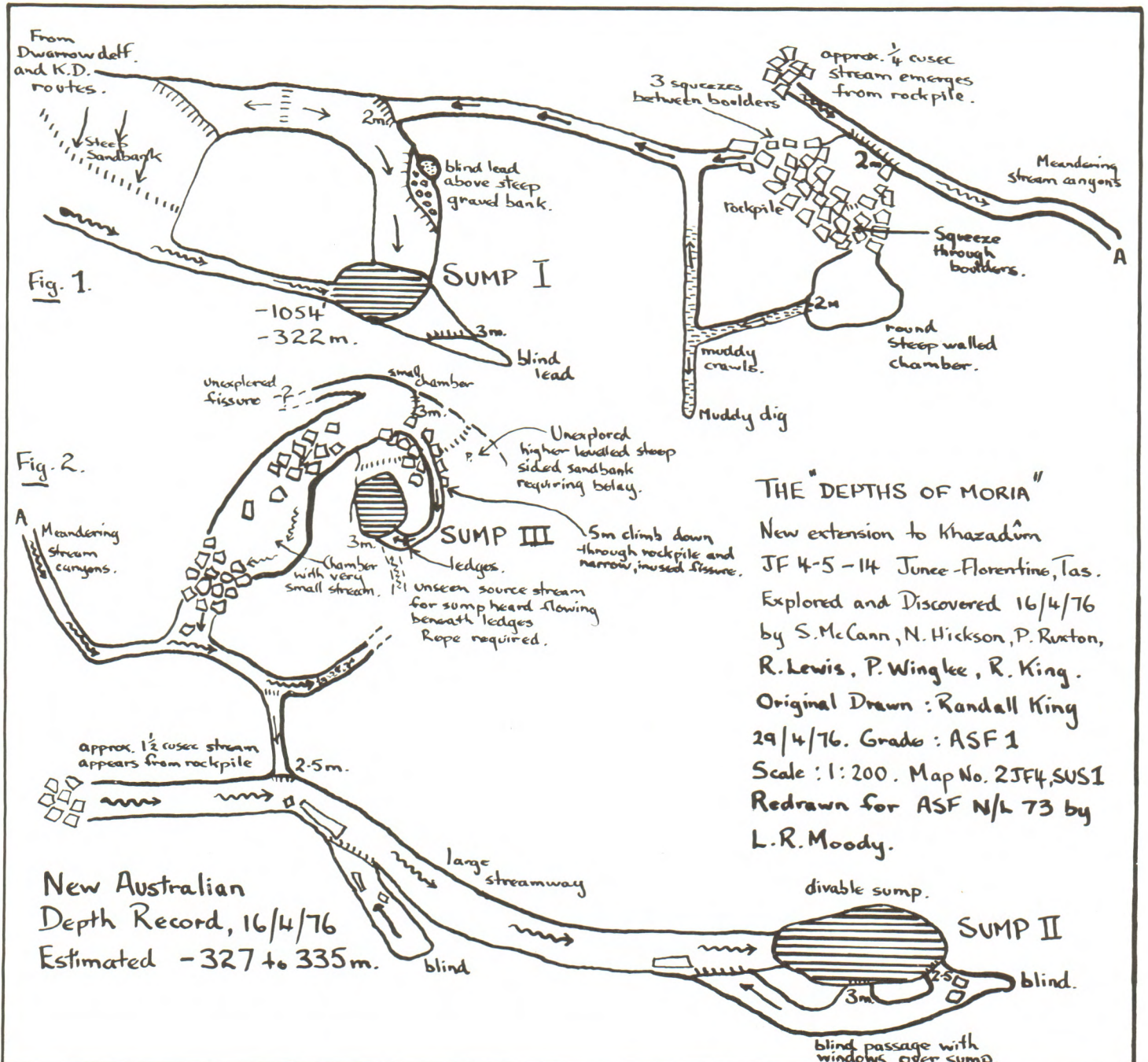
To conclude the caving, Julia and Steve had a very tiring drive to Mole Creek on Sunday night, and then, with a dawn start the next day, a five hour rush trip into Kubla Khan up to the Khan Chamber. Finally, a drive to Launceston Airport to return the battered hire cars (including paintwork which had been scraped on a barbed wire fence!), followed by an alcoholic flight to Sydney. Relief from the tight schedule of the previous few days led to much hilarity over dinner in a surprised restaurant. Unfortunately, the final cave of the trip was missed out - River Cave at Luna Park, which was closed due to rain! The experience gained from the trip will undoubtedly serve us well on the August Muller Range Expedition to Papua New Guinea, for which this was a training trip.

## ACKNOWLEDGEMENTS

We were extremely fortunate to have had the assistance of Therese and Albert Goede, who gave up much of their time to help make the venture successful. We were also thankful for the fact that the water flow in the June area was the lowest for many seasons, indeed a month later the Khazad-dum route was found to be flooded. Our greatest debt, however, is to TCC and SCS, for the exploration and surveying of Khazad-dum, Cauldron Pot and Tassy Pot; the published reports from this era can only give but a small impression of the tremendous difficulties involved. These maps and reports were of enormous value, for without these, advance planning would have been virtually impossible.

## "The Depths of Moria" \*

\* See Page 12 for explanation





## WANTED: EXPLORERS FOR PAPUA NEW GUINEA'S CAVES

by R. Michael Bourke

For many years the tremendous caving potential of Papua New Guinea has been talked about. Now that this potential is being realized, it is becoming apparent that we resident cavers are too few to handle the exploration on our own. Not that we are inactive - far from it! The pages of Niugini Caver testify to that. But seven active cavers scattered around five centres cannot hope to explore the thousands of virgin caves that are to be found all over the country.

So I want to make a plea to Australian cavers to consider Papua New Guinea for a caving trip. The larger and highly organised expeditions have been very successful in exploration, but small informal trips can be just as successful. Obviously three or four cavers could not tackle remote areas such as the Star or Nakanai Mountains, the Hindenburg, Muller, Raulei or Sarawaged Ranges or the Lelet or Keriaka Plateaux. But there are other easily accessible areas where such a group could make an impression, even if they don't break any new records. Australian cavers have a good record in Papua New Guinea. They formed the bulk of members for six of the eight overseas expeditions and have been the backbone of Papua New Guinea caving since 1960. Let's extend this to smaller trips as well.

### WHERE TO GO?

Even if you simply want "tourist" trips to big caves, Papua New Guinea is the place to come. There are six surveyed caves over 300m deep, including the deepest in the southern hemisphere; Selminum Tem at 20km plus is the longest surveyed cave in the southern hemisphere; a cave on Bougainville ranks as one of the largest chambers in the world; Ora and Tuki dolines on New Britain are amongst some of the world's largest; stream flows in some of our caves, such as Atea, Ora and Iaro, are gigantic by any standard; and some of the pitches (150 - 180m) are quite respectable. Admittedly most of these are well off the beaten track, but there is plenty of dramatic caving in accessible areas.

For a one or two man surface reconnaissance trip, there are areas with depth potential in excess of 1,000 metres, such as the Sarawaged Range where no caver has yet visited. (See map Page 11)

Caves are reported from all 19 provinces in the country but obviously some areas are more worthwhile than others. For a small group I would suggest one of the following four areas:

### CHIMBU PROVINCE

Both the Porol Range and the Chuave-Nambaiufa area contain many unexplored caves. You can cave without wheels provided you don't mind lugging a pack up some steep hills. The climate is mild by Papua New Guinea standards; the scenery is good; the people are interesting; there is a reasonable amount published on the province's caves; and the potential for further extensive and deep caves is good. If you're anthropologically minded, there are cave art, burial sites and legends to be found.

A brief synopsis of the recent PNGCEG highland meet might convey why I am so enthusiastic about the area. Our first stop was the impressive Hell's Gates not far from Goroka in the Eastern Highlands Province (not the Chimbu). A stream disappears into the 51m entrance pitch - impressive stuff! After descending that and traversing through the main passages, we started some exploration in a small passage that may not have been entered before, despite the relative popularity of the cave over the years. Lack of time cut our trip short. Even our well known caves offer scope for new exploration.

We then moved up to Kundiawa, the provincial capital of the Chimbu. A day was spent in the four kilometre long Irukunguai Cave. Some of the passage here is very beautiful. We did not push possible leads here but spent another day surveying a 740 metre long cave nearby. The rock art and bullet scars (legacy of the first Government-native contact) near the entrance provided an interesting diversion.

Another day was spent pushing an unfinished deep cave last looked at in 1973. We got down almost 200 metres but ran out of rope - not cave! With two days to go, the party pulled out to the Chuave area. Here, a previously unexplored stream sink was descended. The passage at the base of the 45m entrance pitch led into a large river passage which was explored but a short distance before it was deemed wise to leave it till the dry season. (See Niugini Caver 4(1):17-19 for the complete trip report).

The Porol Range is also the location of Bibima, 494 metres deep. There are numerous shafts and stream sinks in the Chimbu that have never been looked at by cavers. Three potentially deep caves, Darua Muru, Mebile and Angunga, await bottoming. The Chimbu would be my first choice for a small informal trip from overseas.

### COASTAL NEW IRELAND

The Lelet Plateaux is where the deep ones will be found on New Ireland. But as we noted in a review article on the island, "Caves are very numerous on New Ireland. At almost every village on the north-east coast from Mangai south, the people know of caves nearby."



The Sydney University Speleological Society presents:



# *The Caves Of Jenolan.*

## *2: The Northern Limestone.*

All you wanted to know about Jenolan,  
but were afraid to ask!

**138 years of cave exploration & documentation published by  
SYDNEY UNIVERSITY SPELEOLOGICAL SOCIETY.**

*186 caves described.*

*12 pages of photographs.*

*90 pages of maps, including an Isometric Cave Map of Henrys Hole.*

*with a foreword by W.L. Brennan*

*Speleological History by John Dunkley*

*Geology, Geomorphology, Hydrology by Henry Shannon*

*PLUS a checklist of all caves at Jenolan*

*This book is more up-to-date than Spelo Handbook will be,  
so if you are interested in Jenolan - then this is the book for you.*

**PRICE \$ 5.00** (postage extra)

Available from the Sydney University Speleological Society

Box 35, The Union, University of Sydney, NSW 2006



## SPELEO-GIGS

### COMING EXPEDITIONS & EVENTS

#### KIMBERLEYS - LATE WINTER 1977

Lloyd Robinson, who was involved in much of the early exploration in the Augusta area, is planning a trip to the Kimberley region, leaving New South Wales on the last weekend in July 1977. The trip is expected to last 6 - 8 weeks. Anyone in WASG wishing to join him is welcome. However, cavers from other states who may be interested are asked to get in touch with Lloyd at the following address:

167 Mount Keira Road,  
Mount Keira,  
New South Wales, 2500.

#### THE NULLARBOR

UNSWSS members Steve Wheatley and Graeme Pattison are planning an expedition to this area in January or February of 1977.

#### TASMANIA'S DEEP CAVES

Alan Warild, also a member of UNSWSS, is reported to be leading an assault on some of the "biggies" down south sometime in January 1977.

#### EUROPE AND NEPAL

Andrew Pavey is heading back to both of these places in August 1977. If you are looking for an experience to end all experiences, have a few dollars to spare and are a competent caver, get in touch with Andrew. His address is:

C/- 100 Pitt Rd;  
North Curl Curl,  
New South Wales, 2099.

\*\*\*\* - \* - \* - \*\*\*\*

## PUBLICATIONS

Glenn Pure has advised me that the following publications are available from UQSS -

"AUSTRALIAN SPELEOLOGY 1972": - A collection of top articles, cartoons etc. which appeared in speleo newsletters throughout 1972. Topics are widely varied and cover aspects such as "Biology", "Caves", "Techniques" and "Conservation". Price: \$2.75 Pack and Post: 80c within Australia.

"1974 ASF CONFERENCE PROCEEDINGS":- A collection of papers on all aspects of caves and caving which were presented at the last ASF Conference in Brisbane in December, 1974. Price: \$5.00 Pack and Post: 70c within Australia.

"MOUNT ETNA & THE CAVES":- A thorough documentation of the resources, unique features (bats etc.) and park proposals for this controversial land unit just north of Rockhampton in Central Queensland. The book is well illustrated with colour photographs, sketches, cartoons and maps. Price \$4.00 Pack and Post: \$1.00 within 50km, \$1.35 elsewhere in Queensland, \$1.90 in N.S.W., \$2.00 in Vic., S.A., & N.T., \$2.20 in Tas. & W.A. (A majority of well known clubs have been supplied with copies to sell. Check with your club secretary - they may just happen to have a few copies for sale!)

Address to write to:-	The Conservation Treasurer, Uni. of Qld. Speleological Society, c/- The Union, University of Queensland. St. Lucia, Qld. 4067.	(Central Queensland) R. J. McCabe, P.O. Box 795, Rockhampton, Queensland, 4700.
-----------------------	--	---

"HASTINGS CAVES STATE RESERVE, TASMANIA - A VISITORS' GUIDE" :- A 16 page booklet produced by Roy and Andrew Skinner. Contains the history, geology, age, geochemistry, survey and exploration plus information on three other well known caves in the area. Mention is also made regarding the Ida Bay Caves and the Thermal Pool at Hastings. Six black and white photographs. A must for your collection. Copies can be ordered from:

Andrew Skinner,  
1 Randall Street,  
Sandy Bay,  
Tasmania, 7005.

Price: \$1.10 including postage.



## PUBLICATIONS Cont;

"AUSTRALIAN SPELEO ABSTRACTS - 1974":- A complete guide to Australian Speleological Literature. Available from the publishers Sydney Speleological Society. Price \$3.50

STICKERS:- The Tasmanian Wilderness Society has available stickers entitled "South-West Tasmania - World Heritage". Cost 50c. If you would like one to stick on you car etc. then contact your branch of the South-West Tasmania Action Committee -

N.S.W.	PO Box N204 Grosvenor Street, Sydney. 2000
Vic.	206 Clarendon Street, East Melbourne. 3002
A.C.T.	PO Box 1663 Canberra. 2601
S.A.	33 Jervis Street, Erndale. 5066
W.A.	44 Valley View Road, Roleystone. 6111
Qld.	PO Box 238 North Quay. 4000
Tas.	102 Bathurst Street, Hobart. 7000

\*\*\*\* - \* - \* - \*\*\*\*

## BACK ISSUES

Back issues are now being handled by Robin Steenson. As I have not yet had a report from Robin on the full situation regarding back issues I will not elaborate on the report which appeared in Issue No.68. Highlights from issues 68 - 73 are as follows:-

- Issue No.68 - Kubla Khan Filming Trip  
How Strong is a Stitched Splice in Nylon Webbing?
- Issue No.69 - Caving in Peru -  
South African Caves
- Issue No.70 - The Junee-Florentine
- Issue No.71 - Caves and Caving in Nepal  
ASF Conservation Plan
- Issue No.72 - Speleology and Government  
Caving and Karst Conservation  
Mapping of Easter Cave
- Issue No.73 - A New Australian Depth Record - Down the Big Three  
Wanted: Explorers for Papua New Guinea's Caves

\*\*\*\* - \* - \* - \*\*\*\*

### SPELEO HANDBOOK PROGRESS by Peter Matthews, Sept.'76

Despite appearances (or lack thereof!), the Handbook project has certainly not been in the doldrums. Quite the opposite in fact. A major effort has been going into the setting up and testing of the computer programmes which will enable the checking, storing and updating of the data for the 4,000 odd caves which will appear in the cave lists.

This project is quite a significant one for ASF, and as such, requires that due attention be given to its proper initial setting up. For example, two important requirements are:-

- (1) accuracy of data, and hence also credibility of the system; and
- (2) ease of system operation by others in the future.

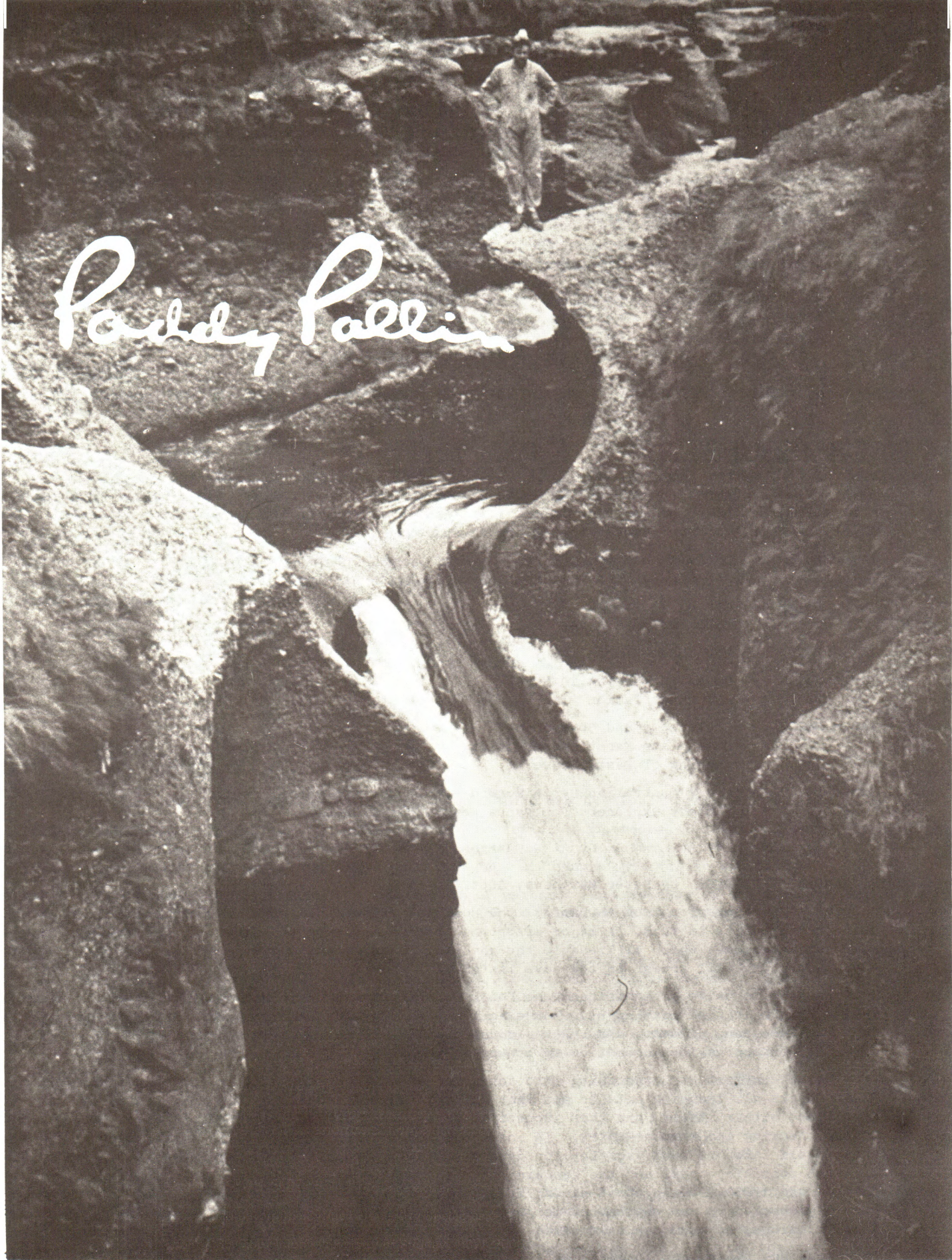
Considerable effort has been going into achieving these. For example, as far as possible the programme checks all incoming data to see that it has been punched accurately from the forms; that it is consistent within itself, and that impossible or unlikely data is rejected, to allow subsequent manual checking and then re-entry. In instances where correct spelling is vital, such as for words which could later be used as a key for data retrieval, separate lists have been set up containing all such possible words, and the incoming data is checked against these. This applies to biological species and 1:250,000 map sheet names; i.e. any species not finding a match in the list is then manually checked to see whether it is just a mis-spelling or whether it is a species not yet listed. Fossils, minerals, etc. can be treated similarly.

The above has taken much longer than I thought it would, despite a sustained and concentrated effort. Nevertheless it is now finished, and it was important that it was done thoroughly. Since then, I have reassessed the time scale for the remaining work and am now forced to admit that it is unlikely that the book can be printed in time for distribution at the Conference. (Damn!) I hope you can bear with me a little longer.

One bright point is that despite all the government cutbacks, the second and final instalment of the grant money has now been received.

\*\*\*\* - \* - \* - \*\*\*\*





John Dunkley contemplating the Sink of Harpan River Cave, Nepal — Photo by Andrew Pavey

PADDY PALLIN can supply equipment for all types of expeditions to all parts of the world.

69 Liverpool St.,  
Sydney

46 Northbourne Ave.,  
Canberra

55-57 Hardware St.,  
Melbourne



WANTED: EXPLORERS FOR PNG's CAVES Cont;

(N.C. 2(3):193-205). No really extensive or deep caves are known but some are respectable enough. Matapara is a chamber 308 metres long, up to 60 metres wide and 43 metres tall; Kabase is estimated as 100 metres deep and 400 metres long.

Coastal New Ireland is beautiful - it's what unspoiled tropical islands are meant to be; the people are friendly; there is a road along of the north-east coast; caves are plentiful; cave legends and war relics abound. If you're not too heavy on single ropes, but are into relaxing on white sand beaches, fishing, diving, sleeping in attractive villages and finding "new" caves, then New Ireland could be your scene. It costs more to get there than the highlands - but then you can take in a bit of New Britain on the way.

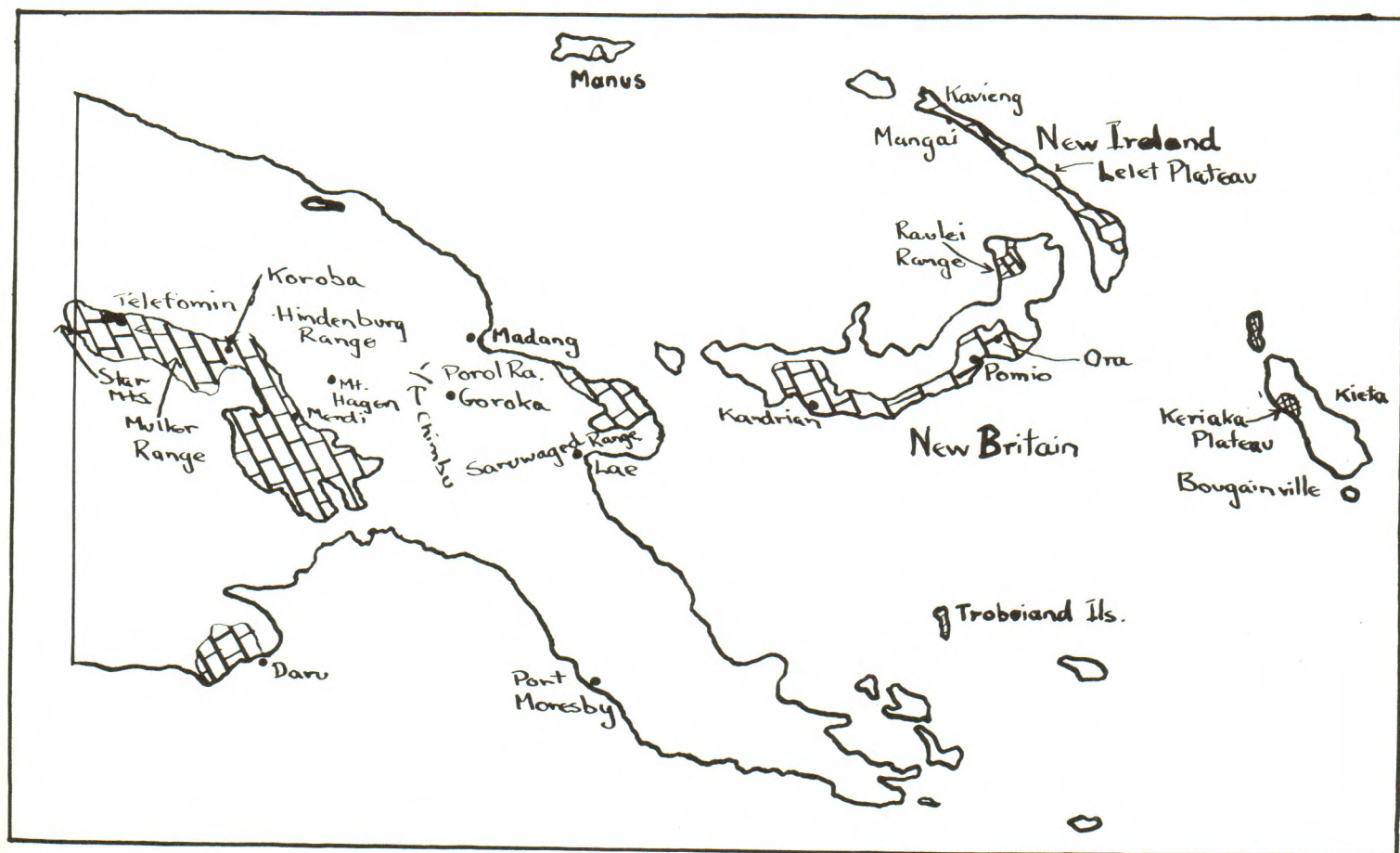
SOUTH COAST OF NEW BRITAIN

The extensive karst areas of New Britain have barely been touched, caving wise. Enough has been done to show that caves are abundant both on the coast and inland. Like New Ireland, much of the south coast is pretty, but here transport is a problem. If you would like to see a remote area not so touched by the 20th century with a bit of caving thrown in, then a couple of weeks based at Pomio or Kandrian could be most rewarding.

There is one major advantage to this area: the seasons are the reverse of much of the rest of the country, including the Chimbu and New Ireland, so at Christmas it is relatively dry when most other areas are having their wet. This coast has an annual rainfall of up to 6,000mm so a trip in the wet (July-September) would definitely not be on.

SOUTHERN HIGHLANDS

Again karst areas are very extensive and cave exploration has not progressed far. The potential is there but the accessible areas such as Mendi-Poroma-Kagua and Tari-Koroba do not have anything like the potential of the Chimbu. Nevertheless, a cave like Omai near Mendi, where local cavers spent 40 hours exploring without finishing it, cannot be small (See N.C. 1(3):56-58). The people are very interesting and the region is primitive in more ways than one. As in other areas, large rivers disappearing underground are not uncommon and there are plenty of unexplored caves to be had. This is an area for a group interested in colourful people as well as caves.





WANTED: EXPLORERS FOR PNG's CAVES Cont;INFORMATION

Much of the PNG caving information is to be found in the pages of Niugini Caver (good value at only \$2.00 per annum from the author - end of free advertisement). Kevin Wilde (Box 1055, Goroka) is the local highland caver; Mal Pound (Box 319, Port Moresby) knows his way around the caves near Port Moresby; and I'm the source for the islands (D.P.I., Keravat, E.N.B.). So get in touch if you're contemplating a trip.

If you come to reside in PNG, make contact with the local cavers. Too often Australian cavers have spent several years in the country and done no significant caving for want of local information or anyone to come out with.

DO'S AND DON'TS

It's worth remembering that PNG is an independent nation and not an extension of Australia. The laws, customs and people, including the expatriates, are different. For example, the exportation of wildlife, including insects and bats, is prohibited without a permit.

Learn Tok Pisin - if you can communicate with the villagers, it will greatly enhance your appreciation of the country.

Get into the villages - there are a lot of nice people there. In the towns you're more likely to find spivvy Papua New Guineans and jaded whites. You don't want to come 3,000km to listen to some ocker from Balmain complaining about his local workmates!

Don't condemn the racist expatriates - and then proceed to rip off local employees.

Do publish your caving findings, preferably in a major newsletter or journal. The PNG Government is particularly sensitive about overseas research workers who come to PNG and leave no published record in an accessible form.

FINALLY

A caving trip to PNG should be a most rewarding and memorable experience. Aside from the caves, there is some magnificent karst country to be seen. The field is wide open for the biologist or other scientist. PNG is the place to come, not only for the big expeditions seeking world depth records, but also for smaller groups intent on some good caving.

\*\*\*\* - \* - \* - \*\*\*\*

"THE DEPTHS OF MORIA" - from Tolkien's "Lord of the Rings".

"The Mines of Moria were vast and intricate beyond imagination . . ." p.328 Full Paperback Edition 1973.

"If you pass the doors of Moria - beware!" p.351

\*\*\*\* - \* - \* - \*\*\*\*

**BOOK REVIEW**

Reviewed by K. G. Grimes, UQSS.

SURVEYING CAVES: by Bryan Ellis; 1976; xv plus 88 pages; A5 format; Paperback; Published by the British Cave Research Association, 7 School Lane, Combwich, Bridgewater, SOMERSET, TA5 2QS, U.K. £1.50 (plus postage).

This is an introductory text which aims both at explaining the basic principles of surveying for the beginner and also at providing guidelines for improving the standards of those already experienced in the field.

The book has 16 chapters, varying in length from half a page upwards: Ch.1, Purposes of a Cave Survey (1½p); Ch.2, Accuracy of a Cave Survey: Survey Gradings (6pp); Ch.3, General Principles of Surveying (7pp); Ch.4, Calculating the Survey Figures (7pp); Ch.5, Plotting and Drawing the Survey (10pp); Ch.6, The Computer as an Aid in Cave Surveying (3pp); Ch.7, Publication of the Survey (1p); Ch.8, Instruments: Errors and Calibration (7pp); Ch.9, Cave Surveying by Magnetic Induction (15pp); Ch.10, Other Equipment (1½pp); Ch.11, Cave Surveying under Arduous Conditions (2pp); Ch.12, Surveying Submerged Passages (1p); Ch.13, Archaeological Cave Surveying (1½pp); Ch.14, Geological Surveying of Caves (2pp); Ch.15, Surveying on Caving Expeditions Abroad (2pp); Ch.16, Surveying Lava Caves (1½pp). There are also a set of specially designed trig tables, log tables, a 96 item bibliography (about 40 of the references listed are in club newsletters etc. which would be difficult to find in Australia, and an index.

Of particular interest is the listing and discussion in Chapter 2 of the new BCRA survey grading system which replaces (but is more or less compatible with) the earlier CRG system which we use in Australia. This new system is more logical than the old one as it is based on the accuracy of the observations and station position errors rather than just the type of instruments used.



## WHO'S WHO.... on the speleo scene?

### 25. neil montgomery

Neil joined SSS after a talk given to his scout group by an SSS member. After a couple of years of general caving, he was snared by Julia James and became one of the most prolific cave surveyors in Australia, contributing a high proportion of the survey and drafting work in Bungonia Caves. Neil is an exceptionally strong and talented caver and his main interest lies in SRT caving. He has caved at Chillagoe, Camooweal, Tasmania, several trips to New Zealand, Papua New Guinea; also spent 1975 touring the world caving in England, The Continent, USA and Mexico. He was one of the four Australians to bottom the Gouffre Berger and currently dreams of finding the deepest cave in the world and writing a book on SRT techniques. Neil is a trained mathematics teacher, unmarried, unemployed and very apolitical. He is known to all as a genuine nice guy and an absolute pleasure to cave with.

### 26. elery hamilton-smith

First caving trip was to Corra-Lynn on the 4th June, 1954. One of the founders of CEGSA in 1955 and first President. Was involved in the formation of ASF and became the first Secretary. Elery has also held the position of President on various occasions and acted as convenor of various Federation Committees. Also a founder of Victorian Cave Exploration Society and later a founder and first President of VSA. Major interest is cave biology and is Honorary Associate of the South Australian Museum and editor of Australian Bat Research News. Has other interests in conservation, cave management, history of cave areas, speleo-philately and just plain caving. Has visited caves in all Australian states and in many other countries. Highlights of caving experience include - Japanese bath-houses and being driven to caves (in Malta) in a chauffeur-driven limousine. Married to Jean; works as a social planning consultant; likes photography, red wine, Bach, exotic food and is addicted to books.

### 27. peter radcliffe

Peter is current President of UNSWSS and is best known to other cavers as a disembodied voice which says "G'day" over the 'phone at some unlikely hour of the day. Peter is 26 years of age and works for Telecom. Peter has caved in New South Wales and Tasmania and his current interests include surveying at Yarrangobilly and Cliefden. Peter can always be depended upon to brighten up the party with a cliché or two. Never ask about the "Hills" joke!

### 28. michael armstrong

Although Mike is doing his degree at the University of New South Wales, he does his bit of caving with MUSIG. He is currently working on his Masters in Geology. I have been informed that Mike is single and some months back experienced the misfortune of having his car blow up! He is also reputed to be poverty stricken (aren't we all) but that hasn't stopped him buying jumars, etc. I am also informed that nearly all of his possessions consist of caving gear.

### 29. michael marx

Michael was the driving force behind the Mullamullang trip late last year. He is a third year law student at Macquarie University and is twenty years of age. Due to a number of other commitments, he has refused executive positions with MUSIG. Michael is also a very enthusiastic photographer and can often be seen clicking his way around Jenolan.

### 30. john benson

John is reputed to have a strong association with a disreputable character known as 'Judge Creature' (Could they be the one and the same person?) He is also twenty years of age and recognisable by a strong attachment for mud! He is also extremely interested in ski-touring and climbing. John is single and currently in his fourth year doing geology/biology at the Macquarie University.

\*\*\*\* - \* - \* - \*\*\*\*

Editors Note: Next issue? Peter Mathews, Dave Rothery, Richard Willson, Nicholas White, Bruce Welch. Future issues - Peter Robertson and Lou Williams. "Ego" is not a dirty word! Let's hear from your club soon - know who I mean?



## DOWN UNDER ALL OVER...

## news from around the societies.

- CEGSA : Dot Peisley reports that there have been a very busy few months in the past with more to come. A Federal Grant to up-grade the Victoria Fossil Cave at Naracoorte has finally come through and CEGSA will be busy helping with a complete survey and pilot tunnel for the new exit. The Grant means complete new wiring, new pathways and an Interpretation Centre. Plenty of trips to the South-East for exploration and surveying. Several trips to the Flinders Ranges with Ian Lewis leading a trip to Wooltana Cave in the Northern Flinders. Wooltana has an entrance pitch of 60 metres! Other trips were held to Bakara Well in the River Murray area, Corra-Lynn which is on the Yorke Peninsula and there has also been an upsurge in membership which has brought fresh enthusiasm and activity into the club. Dot also informs us that Occasional Paper Number 5 is now out. This is the South Australian Reference Book (a complete listing of all S.A. caves). Price \$6.00 each (extra good value).
- CSS : Gordon Taylor informs us that with the warmer weather of Spring, increased activity is evident in the club. CSS are coming out of Winter hibernation. Although still concentrating their activity on Yarrangobilly, there have been trips to many other areas. These include Wee Jasper, Wyanbene, Marble Arch, Jenolan, Cooleman and others. A spate of trips (7 in fact) were made to Yagby to dig in Hanging Spring Cave. Digging was quick but now dirt removal and bad air problems have arisen. A portable generator and fan were used to circulate air. Interest has now waned on this project. A detailed report by four CSS members on London Bridge is to appear in Volume 13 of Australian Geographer. Amphipods and Isopods from a cave at Wee Jasper are at present being studied. Preparations are also well in hand for Cavconact. Several notable guest speakers have been engaged and it should prove to be a very productive event. Hope we see you there!
- KSS : Jean Piggott reports that news from KSS is rather short this quarter, but does not imply inactivity - just the opposite, for literally tons of rock and rubble have been cleared out of the  $\frac{1}{2}$  Way Efflux by some of the biggest working parties seen at the Macleay Caves. The more rubble removed from the cave, the more there seems to be, but it still looks good! By courtesy of Kevin Kenah, use has been made of a block and tackle (Turfa?) and the results from the use of this mighty little gadget have been spectacular. Work is continuing.
- LSC : George Bamford informs us that LSC have had a very quiet year with very little caving being carried out. It is hoped that things will improve over the coming twelve months and with George as our LSC correspondent we will no doubt hear much more about this club.
- MUSIG : Colin Killick reports that MUSIG have been fairly active of late and a 'Chocolate Crackle' sale at the University organised by several female members succeeded in raising about \$40 towards a Forestry Compass which was needed desperately for survey work. The 24th - 25th June saw them in Mammoth and Wiburds Lake Caves at Jenolan, collecting specimens of spiders for Australian Museum staff to identify. Hopefully they will be able to continue this work and forward a report of the results for publication. MUSIG is handicapped by not having a publication of its own despite its rapidly growing membership. The matter has undergone some discussion but decided against publishing due to the already heavy market. (I don't agree with this! Suggest you start publishing even if it's only a quarterly news-sheet! ASF Editor.) Colin also mentions that several trips have been held to Bungonia, mainly for digging purposes. They have a dig underway (not B125!). Two MUSIG members, Richard Wilson and David Rothery have recently returned from Papua New Guinea where they were part of Julia James' expedition.
- NUCC : Peter Hart informs us that the first half of 1976 was fairly quiet, with the following trips being held: Wee Jasper - caves visited were Dip, Gong and Signature and the turn-up was good. Bendethera - small party visited this area with the Landrover Club. Yarrangobilly - a party went in conjunction with Highland's Canberra Branch. Wyanbene - small party visited the main cave, WY1. Wee Jasper - small party of three visited Dip, Signature and Gong caves. Wyanbene - two trips were held, one with a party of two, the other with a party of four. The former party explored Aitchesons Avens and the second explored Ceasars Hall and the Gunbarrel Aven. Of late, club activity has increased and this is to be supplemented by a vigorous advertising campaign. A trip to Wyanbene, WY1 has been planned to look around and survey the largely unexplored upper levels. Another visit to Yarrangobilly is anticipated mainly to continue the work on the dig in East Deep Creek Cave.
- OSS : Ray Rowney reports that Descent has been resurrected and is being edited by Phil Ireland. Trips have been held to Cliefden mainly for the purpose of replacing some of the gates and gating Jable. Trips have also been held to Canomodine (thankyou) which is an area about



DOWN UNDER ALL OVER Cont;

- OSS Cont. : 30km west of Orange towards Canonimdra. This is in the same area of limestone which runs from Cliefden north through Cargo to Molong. An area familiarisation trip was also held to Tuglow late in June. Some members have also been practising their SRT although this is not needed at Cliefden. However, they hope to try it in other areas. OSS have also got their fingers crossed that the government is running out of money for the Growth Centre and won't need to build the proposed dam to flood Cliefden.
- SCS : Ron Mann informs us that his club has been quite active. Water tracing has been carried out at Mole Creek mainly in the vicinity of Herberts Pot. Visitor and tourist type trips were made to Trowutta, Montagu, Hastings and Entrance Caves. A trip was also held to the Jane River area where a number of dolines were investigated but no major finds resulted. This particular party resorted to bicycles for the last 7 miles of the track. In the Junee area, combined club water tracing proved links between Growling Swallet and Junee Rising breaching the topographic divide - linear distance of 10km. Earlier tracing of Rescue Pot (JF201) and Satans Lair also proved to link with Junee Rising. Club also participated in exploration of The Chairman, a new cave (JF99). Present depth is approx. 155 metres.
- SSS : Keith Partridge reports that SSS thrashed SUSS in a football match between these clubs. It turned out to be a great success and provided a good afternoons entertainment for all who attended. Keith extends his congratulations to SUSS on their great effort but as predicted they were no match for the SSS giants and were thoroughly thrashed 27 - 2. It is hoped that a few more inter-club games can be held. The August edition of the Journal gave a reprint of an article on Tuglow Cave which was first printed in the "Sydney Mail" in January 1935. It includes an early history of the cave and has numerous photographs of how the cave used to look in those early days before the vandals got to work. A recent trip to Wombeyan by Tom Haylor and friends resulted in the discovery of several small caves, which were mapped and given temporary cave tag numbers. These maps have been reproduced in the July issue of the Journal. The need for extreme care when using SRT was highlighted again recently when one well known lady caver found herself dangling down the side of Bungonia Gorge with a lock of her hair caught in her whaletail. Let this be a lesson to all long-haired dangles - keep your valuables clear of your rigging. In June a trip to Walli discovered that demolition work had been carried out to enlarge the passage between Piano Cave and WA35 and that a very flimsy gate had been placed in the passage and pad-locked. This work has been done in the first half of this year but it remains a mystery as to who did it and why. Can anyone supply an answer? The advantages of permanently locating stretchers and first aid kits at major caving areas was demonstrated recently when the equipment at Bungonia was given its first real emergency workout. While working in the efflux, Bob Holand was struck by a boulder dislodged from above the trench and suffered several broken ribs and a bruised lung. After he was made comfortable an ambulance was called and the stretcher and medical kit were collected from a nearby farm and several volunteers enlisted to help carry it. By the time the ambulance arrived, all the necessary equipment was on hand at the efflux and after a quick check by the first aid officer, Bob was placed on the stretcher and taken up the hill and then to Goulbourn Hospital - where he spent three days given the nurses merry hell. The point here is, that all equipment was on hand in the area and by the time medical help arrived, the stretcher and kit were at the scene of the accident. This is a big time saver particularly where the stretcher has to be manoeuvred deep into a cave - time which is very important to a seriously injured person.
- SUSS : Peter Campbell informs us that surveying using gravel-mounted forestry compass was carried out through the squeeze sections of the new extensions to Spider Cave (Jenolan). Documentation in the Southern Limestone (Jenolan) has been brought up to date and further work in this area is being planned in collaboration with UNSWSS, MSS and the guides at Jenolan. SUSS would appreciate hearing from anyone who has knowledge of this area and if so, please contact Bruce Welch. Work on "The Caves of Jenolan 2: The Northern Limestone" is almost complete and this should be available by the end of the year. This publication is in the "Mammoth Book" style and contains information on the Northern Limestone. Other activities at Jenolan include exploration of Lower River and Ice Pick Lake in Mammoth Cave, and the investigation of blocked passages in Naked Lady Cave, which unfortunately did not lead to vast unknowns. SUSS has had trips to Wyanbene and Marble Arch. Malcolm Handel and Randall King have recently returned from Niugini and reports that the Atea is good prospect. They surveyed 4km of tributary passage without even examining the main stream passage, in 5 days. They plan a much larger expedition in 1978. SUSS regrets to report the death of Mr. R.E. Murdoch early in September. Mr. Murdoch was the director of the Dept. of Tourism in N.S.W. Although he was not a speleologist, Mr. Murdoch always showed interest and gave support to the ASF in its activities in the areas under his jurisdiction. He gave support to Nibicon, and to the Cave Tourism Conference. The protection of Jenolan, Wombeyan & Abercrombie was



DOWN UNDER ALL OVER Cont;

SUSS Cont; : due to his conservation-oriented attitudes towards access. His influence will be missed.

TCC : Andrew Skinner reports that a recent meeting between SCS and TCC representatives discussed the feasibility of the clubs working in much closer co-operation. The outcome is that meetings of both clubs will be held at 132 Davey St; Hobart, and that there will be closer co-operation in fieldwork. Whilst this falls short of the amalgamation desired by some TCC members, it is still a significant step. Fluorescein tests conducted by Albert Goede and Leigh Gleeson of SCS have proved that the water from Growling Swallet (JF36) flows under the surface divide and resurges at the Junee Rising (JF8); a distance of 9.5km! Prospects for an enterable cave are not good. A spectacular doline discovered by John Parker, Steve and Anne Annan of TCC/Maydena has now been explored to a depth of 165 metres. This cave, now known as "The Chairman" (JF99) now rates as the 9th deepest in Australia. Prospects for extending this depth are considered to be possible but only further exploration will prove this point. The most gratifying aspect has been the teamwork and co-operation between the members of TCC, SCS and TCC/MB. In August, a previously unrecorded decorated cave (MC114) was explored at Mole Creek. Although not as spectacular as reported, it is still a significant find. TCC has now been established for 30 years. The club was formed on 13 Sept.1946. This date not only marks the establishment of TCC, but the beginning of organised speleology in Australia. An anniversary dinner was held on the 18th Sept. and was a great success.

VSA : Lloyd Mill informs us that VSA have been busy in the following areas:- Buchan: More trips have been held to Dukes Cave on the Reserve for the purpose of looking at some high-up holes using scaling poles, sadly with little success. Following an invitation from the Reserve Manager, Alan Costigan, a party entered Fairy Cave & re-found Moons Lost Chamber - lost since the turn of the century. Peter Robertson & party found a hole on the side of Hopes Hill, East Buchan, recently. It was eventually found to be 43m deep. Bat Ridges: A few trips have been held to this area to continue the the River Cave survey & find more caves. A dozen or so have been located. Bureaucracy: Moves are afoot for a dramatic increase in club bureaucracy with new jobs being created faster than they can be filled. Adrian Davey (Pres.) says, "We'll have a job for everyone before the end of the year!" A very valued and respected VSA member, Lou Williams, has gone to Europe for a few years. VSA wish him well!

WASG : Kerry Williamson's report is the one we were unable to print last issue and covers March, April and May of this year. "In Easter Cave, AU14, the miners dial traverse has been put through to the water marker in the Epstein Section (just near where the wet passages lead off to the Gondolin), and also through the First Duck to the large chamber past the false floor. The survey is progressing at a good steady rate and there have been several detail mapping trips to the large flat-roofed chambers just beyond the First Duck. Dry gear is ferried through the Duck in plastic bags inside packs. The Epstein section and corkscrew passage has been photographed. Moondyne Cave (AU11) has seen photography, cinematography and video taping trips. Witchcliffe: March has seen a complete underground and surface survey of the Devils Lair/Nannup/Strong's/Mill Cave System (WI60, 61, 63, and WI59). This master map has in latter months been extended south to the Crystal Cave (WI62)/Block Cave (WI107) region, and in May has been extended further south again resulting in the recording of two previously poorly documented caves. The resulting map is answering many questions but posing just as many - which is a good thing. A small previously unrecorded cave has been located near Museum Cave (WI31). A small collapse and a cave have been found in the region between Boyabouka and WI45-46. WI9 has been visited and photographed. Tight Entrance (Bussell) Cave (WI101) has been entered - foul air being present. Winjans Cave has been trogged and a movie made of the upstream end of Strong's Cave. Cowaramup: Bats were once again sighted in Quin-inup Lake Cave (CO1). Yallingup: The Cave of the Seven Sisters (YA3) has been mapped and a new cave and several collapses found nearby by the WASG. Yanchep: Has seen recommencement of the work on documenting of the numerous caves in the area. Eneabba: Saw a trip to the Lake Arramall area in May. The entrance area and about half the main passage in River Cave (E23) were mapped. Familiarisation trips were made to Arramall Cave (E22) and the left-hand trend of the Second "Y" Junction pushed to its bitter end. Several new features were also noted in the area. Further mapping of River Cave will have to wait until late Spring when the winter floodwaters recede.

\*\*\*\* - \* - \* - \*\*\*\*

BOOK REVIEW cont;

The main meat of the book is in Chapters 3,4,5 and 8. These are all well written and cover all the necessary procedures of surveying, reducing the data, and plotting the final map. There are many useful tips for both the beginner and the veteran surveyor: e.g. the suggested use of an oblique stroke instead of a dot for the decimal point, which prevents its 'loss' on a wet or muddy page. Remaining chapters are concerned with techniques and problems of cave surveying. All in all the book is a welcome edition to caving literature and fills a long felt need. A copy should be bought for each club library and dedicated surveyors will find the small outlay well spent. One final criticism is that my copy broke along the spine after the first reading and looks as if it is going to shed pages in the near future.

\*\*\*\* - \* - \* - \*\*\*\*





...and see us  
sometime at:-

**MOUNTAIN EQUIPMENT LTD**  
17 falcon st cr ws n st 2065 ph 439-2454



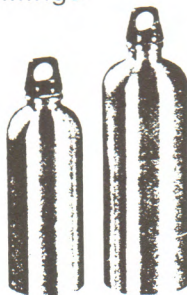
# BUSHGEAR Pty. Ltd.

*sell practical high quality clothing, boots, gear, books and maps for all Outdoor People.*

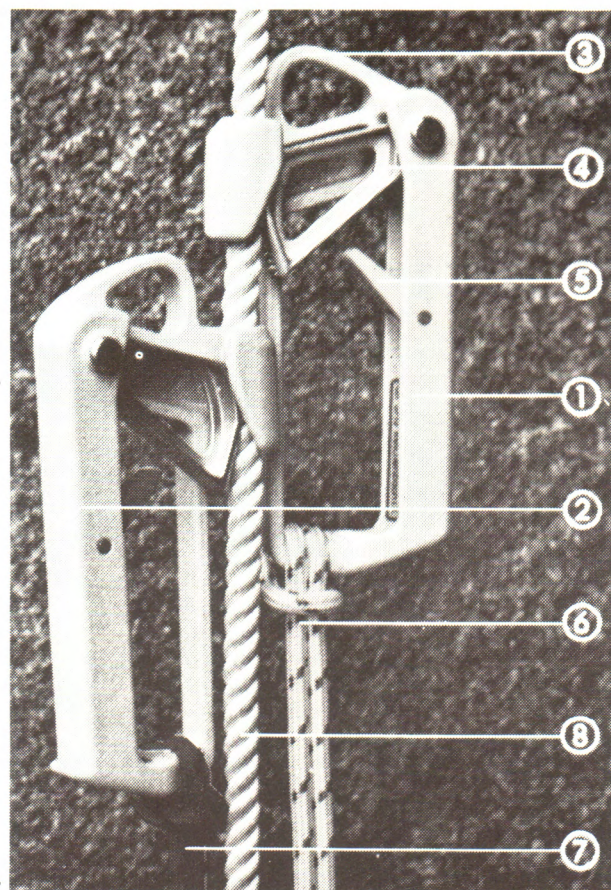


**Sleeping bags for all occasions**

Down or Synthetic fillings



Sigg Aluminium bottles watertight and fuel-tight.



JUMAR

Made in Switzerland  
Patent applied for

**For ascent and descent operations on ropes. The universal and compact rescue device in pocket-size**

Ideal for  
**mountaineers — expeditions — cave explorers — rescue work-inspection and renovation work on high buildings**

**Ski Touring** is going places and Bushgear can help you get there and back with a full range of Touring skis, boots, bindings and waxes.

**Wool Clothing**—best for Australian wet-cold conditions—shirts, breeches, pullovers, socks, balaclavas, mittens, underwear.

**Down Clothing**—lightest insulation for dry cold such as Himalayas—duvets, trousers, boots, mittens, waistcoats.

**Synthetic filled**—good designs can offer a reasonable compromise.

**Wind and Waterproof** outer clothing of oiled cotton japara or good coated nylon—parkas, overtrousers, gaiters, mittens, overboots.

*plus packs, tents, stoves, compasses, whistles, survival bags and blankets, sleeping mats, cooking gear, ropes, chocks, tapes, karabiners, iceaxes, crampons, icescrews, mountain skis, caving ladders and lamps, prussikers.*

Write for our catalogue (please enclose 80c, refundable on purchases) or call upstairs at

**46 Hardware Street,  
Melbourne 3000**

**Phone 67 3354 or 67 7966**

