

13

Volume 15

Number 9

January 1974

BULLETIN OF THE SYDNEY UNIVERSITY SPELEOLOGICAL SOCIETY



SUSS



FOUNDED 1948

Next Meeting is Thursday,
7th March, 1974, in the usual place.

See inside.

Box 35, The Union,
University of Sydney,
N.S.W. 2006.

Registered in Australia for transmission
by post as a periodical - Category B.

GENERAL MEETING:

Badham Room,
Sydney University
Old Union
7.00 p.m.

As the University Union has decided to close at 6.00 p.m. during February, the next General Meeting will not be held until the 7th March, 1974 at usual place.

January 26-28

JENOLAN

B. Welch 991013

Water Fall Passage

February 1-3

BUNGONIA

T. Austin

Tony will be leading further trips to Bungonia at least once a month for the next year. See him for details.

March 3

FIELD DAY FOR FRESHERS (Wharonga)

March 9-10

BONGONIA FOR FRESHERS

T. Austin
(Arrange at meeting)

March 9-10

WYANBENE FOR FRESHERS

R. Tunney
(Arrange at meetings)

March 15-17

WEE JASPER FOR FRESHERS

J. Seabrook
(Arrange at meetings)

March 30-31

JENOLAN

B. Welch 991013

April 6-7

WOMBEYAN

D. Ward 9092400

April 10-15
Easter

COOLEMAN)
YARRONGBILLY)

Leaders to be appointed

May 18-19

WOMBEYAN

D. Ward 9092400

May ?

TIMOR

Spike Milligan

COOLEMAN - SEPTEMBER 7-9, 1973.

L.G. Meunzenrieder.

This trip, organised at an 'eleventh hour', was aimed at investigating the hydrology of the system around the dry valley which contains the New Year and Frustration Caves. This period was chosen since the peak discharges of most streams and rivers in the area can be expected at this time.

Attending the trip were M. Listing, G. Frances, K. Brister and myself.

We had a tractor winch in case of trouble and used chains for the trip in and out. Manfred and I camped on the airfield on the Friday night and waited for Keith and Geoff to arrive (round about 2.00 am next morning). On the Saturday we woke to a white frost-covered scene that was magnificent but bloody cold, being round -6°C with snow clouds accompanied by the occasional snow crystals that drifted across the airfield. However, we were undaunted, having come this far, so we continued on, slipping and sliding, with at times snow falling in great clouds all around. Fortunately, it did not last long on the ground. After negotiating the tricky swollen ford just before the decent down to the Blue Waterholes we were stopped by the first ford across Caves Creek which was running at an estimated 10-12 cusecs. The track was some five feet under water. The rest of the way in was a walking trip which we did immediately as the weather appeared to improve.

On Saturday afternoon we managed to observe the following:-

1. The north-eastern swallet was full of water so that it almost reached the level of the semi blind valley below. Indeed, evidence indicates that water had recently flowed over a short distance of the normally dry valley floor.
2. A small stream was feeding a system of swallets on the plateau over to the east.
3. A considerable amount of water was rising from the bluff near Zed Cave and further back near a dig that was carried out some time ago.
4. The small rising near the Keyslot Cave in the main trunk valley below Clown Cave showed increased discharge.

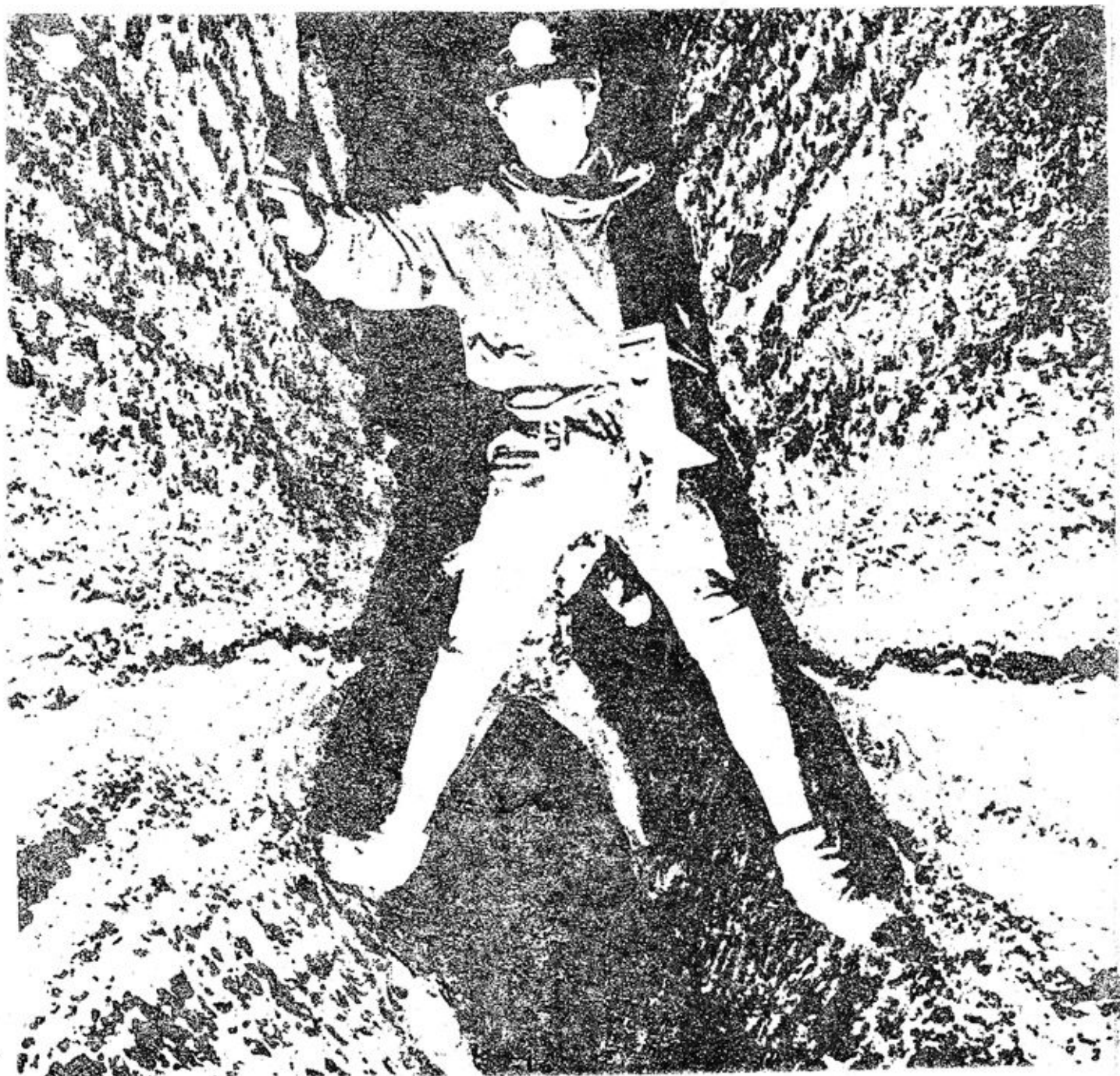
In addition to these observations Keith and Geoff completed a geological reconnaissance off the plateau area to the east and Manfred and I augered two dolines in the area above the incised tributary in the main trunk valley. (S.U.S.S. Bull., Vol. 13, No. 8, p.97-98) A valley slope profile taking in one of the dolines augered in the valley floor was also obtained. Further analysis of the regolith on the slopes and in the drainage line was however curtailed when it began to rain, sleet, hail and snow. Thinking that a retreat was the wise order for the now late afternoon, we scurried back to the cars parked above the first ford across Caves Creek. As the weather looked more gloomy than ever we decided to get out of the area while the going was good. This decision turned out to be a wise one as the rain became heavier and the track more difficult to negotiate on the way out. By the time we got to the airfield it was really bad and even the relatively good dirt road from there had to be negotiated with care.

On the Sunday, after camping at a clearing on the side of a road just out of Canberra, we made our way to Bungonia.

Here we examined the old caedar tree below "The Efflux" which at the time had few leaves in the top half of its boughs, suggesting either old age, a disease or a water deficiency. If the latter is the case, then it might be worthwhile to divert water from the resurgence to the vicinity of the tree.

The views of limestone mining and its effects upon the area was also examined.

After some lunch we made a liesurely trip back to Sydney.



A QUESTION OR TWO

L.G. Muenzenrieder.

In this issue of the Bulletin we will begin a series of questions which you are requested to complete and return to the Society's University address which appears on the front cover of this Bulletin. If you can't afford the seven cents then drop it in personally during the meetings or at the Union counter, making sure that you mark it "ATTENTION - SECRETARY, S.U.S.S., BOX 35, THE UNION".

The aim of this series of questionnaires is five fold :-

1. To improve the running of the Society where possible;
2. To provide the activities that are more in keeping with the members' wishes and expectations;
3. To provide information for future programming of the Society's course;
4. To provide greater interest and communication amongst the members towards the running of the Society;
5. To obtain some insight into the motivations behind speleologists in general.

It is absolutely essential that each and every one of you completes this questionnaire if valid results are to be obtained. I would remind you also that this information will be used in making decisions that will concern you so your views should at least be represented.

The first questionnaire is in the form of a supplement to this issue so that it will be easy for you to return.