

BULLETIN *of the*

Sydney

University

Speleological



Society

SO YOU THINK
YOU ARE A GOOD CAVER?

WELL THEN TRY THIS
QUICK QUIZ.

- 1) YOUR LIGHT IS RUNNING OUT, SO YOU :-
 - a) turn it off, and use other peoples' light.
 - b) turn it on high beam.
 - c) let it run out, then light a candle, and say you thought it was the trip leaders' birthday.
 - d) set fire to the pair of overalls in front of you, and follow them
- 2) YOU HAVE JUST SEEN A PACK OF SCOUTS
ABSEIL DOWN A CAVE. DO YOU :-
 - a) stick you head down the entrance and ask where they come from.
 - b) cut the rope.
 - c) shake the last one off the rope and then take it for yourself.
 - d) pour petrol down the rope and light it.
- 3) YOU NOTICE YOUR CAN OF 'CHICKEN SUPREME' ON THE FIRE
IS ABOUT TO EXPLODE. DO YOU :-
 - a) desperately try to kick it off.
 - b) tell everybody sittins nearby and watch them dive for cover.
 - c) offer them some and then tell them it is about to explode.
 - d) put the fire out.
- 4) YOU NOTICE A SCOUT IN DISTRESS CALLING FOR HELP, DO YOU :-
 - a) go to his aid.
 - b) pretend you are a deaf mute.
 - c) bandage him up so he can't move or speak, and leave him where you found him.
 - d) break his other leg.
- 5) YOU ARE COMPLETELY EXHAUSTED WHILST ON A MARATHON CAVING
TRIP. DO YOU :-
 - a) stop and rest.
 - b) say you left the car radio on, and that you had better go back and turn it off.
 - c) ask if you are nearly there.
 - d) have a swig of the whisky you brought along.
- 6) AT A COMBINED SPELEO DINNER YOU ARE TALKING TO A PERSON
WHO HAS FORGOTTEN WHAT SOCIETY YOU BELONG TO, SO YOU :-
 - a) politely tell him/her, and how good SUSS is.
 - b) tell them you are from SSS and act moronic.
 - c) start a bun fight.
 - d) say you are Hal Lowland.
- 7) YOU HAVE FORGOTTEN YOUR TENT AND MANAGE TO SPEND THE
NIGHT WITH A FRESHER OF THE OPPOSITE SEX. DO YOU :-
 - a) wish him/her good night and go to sleep.
 - b) discuss the day's activities.
 - c) tell them horrifying stories of tomorrow's cave.
 - d) (if you're fit) do something else for public relations.
- 8) YOU SOMEHOW MANAGE TO GET YOUR FOOT STUCK IN A CREVICE. DO YOU :-
 - a) try to free it yourself.
 - b) ask if you come back the same way.
 - c) ask for assistance.
 - d) ask if there is a Vet. or Med. student handy who can do amputations.

9) DO YOU LIKE MUD ?

- a) only if it's up to my knees.
- b) most definitely.
- c) only if it's on toast.
- d) only if it hits someone else.

10) YOU ARE THE FIRST TO ABSEIL DOWN A PITCH. WHEN YOU REACH THE KNOTTED END OF THE ROPE, YOU REALISE THE BOTTOM IS 50 FEET FURTHER BELOW. DO YOU :-

- a) step off onto a nearby ledge and ask for more rope.
- b) undo the knot and proceed (quickly) with caution.
- c) step onto a ledge, undo the knot and ask for a pack of scouts to be sent down.
- d) step onto a ledge, undo the knot and tell the next person you have a surprise for him.

SCORING :

- Q (1) (a) - 1 ; (b) - 4 ; (c) - 2 ; (d) - 5
Q (2) (a) - 1 ; (b) - 4 ; (c) - 3 ; (d) - 5
Q (3) (a) - 1 ; (b) - 2 ; (c) - 3 ; (d) - 5
Q (4) (a) - 1 ; (b) - 3 ; (c) - 4 ; (d) - 5
Q (5) (a) - 1 ; (b) - 5 ; (c) - 2 ; (d) - 4
Q (6) (a) - 1 ; (b) - 4 ; (c) - 5 ; (d) - 3
Q (7) (a) - 1 ; (b) - 2 ; (c) - 3 ; (d) - 4
Q (8) (a) - 1 ; (b) - 3 ; (c) - 2 ; (d) - 5
Q (9) (a) - 1 ; (b) - 2 ; (c) - 5 ; (d) - 3
Q (10) (a) - 1 ; (b) - 3 ; (c) - 5 ; (d) - 4

-
- 10 to 20 = you are uninitiative, unexciting, too responsible (and have joined the wrong club) but are a good caver, definitely trip leader material.
20 to 30 = you are a strange and rare sort of a person, being the perfect caver, fairly sensible, enduring and humorous.
30 to 40 = you have a strong character. You are aggressive (probably disliking scouts) and are not masochistic enough to be a good caver.
40 to 50 = you are a very exciting person. Yet you need help with your caving. You should go on a 20 hour trip with only 10 hours light, by yourself.
-

THE ABOVE QUIZ WAS DESIGNED BY THE SOCIETY'S PSYCHOLOGIST, ON THE SUGGESTION THAT SOME MEMBERS WERE NOT ADEQUATE SPELEOLOGISTS, NOT MEETING WITH SUSS'S HIGH DEGREE OF EXCELLENCE REQUIRED FROM ITS CAVERS; (AND ALSO TO UPLIFT MORAL).

N.B. IN ALL CASES 'A' SHOULD HAVE BEEN THE CORRECT RESPONSE
P.S. Merry Christmas to all my readers from 'DEATH WISH'

TRIP REPORT - JENOLAN 25/26 th APRIL 1980

PRESENT : Mike Lake (T.L.); Bruce Welch; Paula Welch;
Malcom Handel; Steven Bunton; Lyall Watt;
Richard Mackay; Anne Gray; Paul Greenfield;
Mark Twigg

SATURDAY

Enormous quantities of gear were hauled into Spider for two major exploration assaults.

Malcolm, Steve and Lyall would attempt to climb the west wall of the Mausoleum to investigate an apparent passage opposite the Eyrie.

Bruce, Richard and myself would push the downstream rockpile in the hope of reaching the divers' extension from Imperial. Richard had borrowed a wetsuit from Graeme Smith while I had borrowed one from Janine Mackinnon ! [sic] Although my suit fitted extremely well, Richard's was quite tight.

Malcolm and Lyall were rigging their climbing equipment as we headed downstream. Downstream rockpile consists of very sharp angular boulders suggesting they were more recently formed than the well rounded rockpile after the Bus Stop. The rockpile is also far less stable with many rocks precariously balancing.

A short distance into the rockpile we encountered a squeeze so tight that whilst Bruce could negotiate it, Richard had to strike away with a G-pick for a time and then had to remove his wetsuit top to get through !

Further on another small passage with a considerable water flow had to be negotiated. Upon entering the passage, one's displacement [sic iterum] promptly raised the water level, leaving only a small air space.

Beyond this we could not find a way on, and gardening will definitely be required; however Bruce noticed many rocks have mud on them, so perhaps we were very close to the end.

Malcolm and Lyall were in the process of descending the wall when we exited the rockpile having discovered that the apparent passage is just the result of a large piece of Rock falling out and leaving a hole. Thankyou to Malcolm, Steve and Lyall for tackling the climb.

SUNDAY

Everybody else drove back to Sydney in the morning while Paul, Anne, Richard, Mark and myself proceeded to Twiddly-om-Pom. No trouble was experienced on the way in due to our superb navigational ability; however the trip in was a trifle slow. The letter box squeeze above the Twiddly-om-Pom pitch was so unobvious that it seems nature has camouflaged it.

Once down the pitch we started exploring but did not go through Mud-in-your-eye squeeze as it looked too tiring. Anne had a little difficulty in ascending the tape below the ladder but with some help from Paul managed okay.

Meanwhile Mark, who had waited at G.N.C., had created another unique sculpture utilizing a material with which G.N.C. is well endowed.

The journey to the surface was long and tiring after 11.5 hours underground.

Paul maintains that he will never visit T.O.P. again but I await to do it all again if I can find sufficient fools!

Mike Lake

P.S. Did it all again 5 months later with 6 freshers, Paul refused to go and just repeated his previous oath.

(see T.R. 5th October 1980)

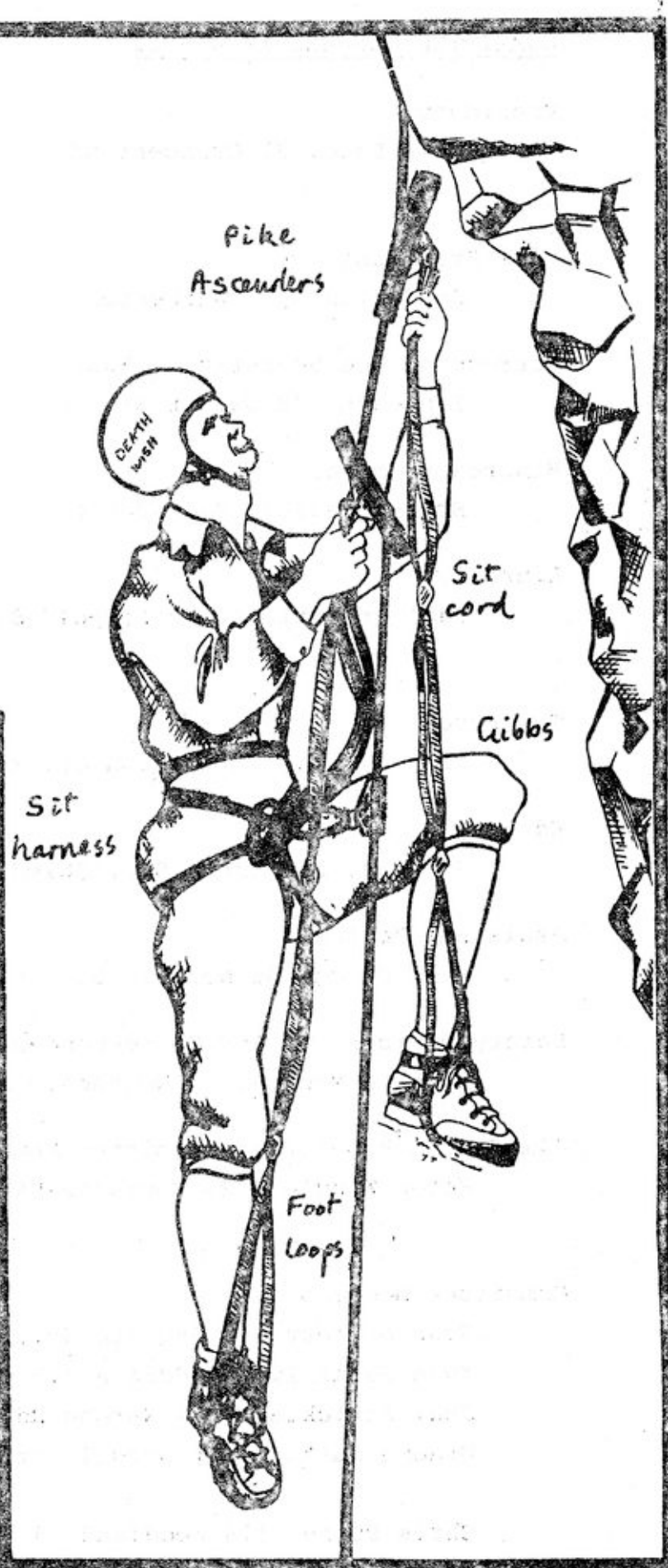


KILL YOURSELF ASCENDING PITCHES -

The extra safety of Pike Ascenders makes them an important aid for descending pitches. Aid slings, foot loops made from 1" webbing, are attached by carabiners to the ascenders. A piece of 1" webbing from the lower ascender to the climber's seat harness insures that he cannot fall out of the rigging and lets him sit to rest or remove anchors.

Pike Ascenders are very strong and will - come off the rope unexpectedly. A pin must be manually removed to get the ascender off the rope. As a result it can be difficult to get around pins when seconding overhang pitches. It can be done without removing the ascender. The climber clips an aid sling into the anchor and removes his weight from the rope temporarily. The rope is then unclipped from the anchor. A Pike Ascender in combination with one of the quicker, less secure devices - Gibbs - accomplished the same thing. The Pike Ascender rigged as the lower of the two provides the assurance that the climber is securely attached to the rope while the other device is clipped around the anchor.

Buy one - you can always
Pike!



COMMITTEE MEMBERS 1980 - 81

President

Mike Lake, 31 Crescent Rd., Caringbah. 524 5229 (h);
692 3145 (w)

Vice President

Geoff Innes, 4 Warburton St., Gympie. 5254871

Correspondence Secretary & Equipment Officer

Ian Mann, 48 Gwydir St., Greystanes. 631 4321

Minutes Secretary

Bryan Cleaver, 9a Endeavour St., Sylvania Waters. 522 7190

Librarian

Paul Greenfield, 32 Leopold St. Croydon. 797 6975 (h)
692 3215 (w)

Treasurer

Bruce Welch, 21 Thomson St, Marrickville. 569 9928

Editor

Guy Cox, 180 Short St., Balmain. 818 1896 (h) 692 2351 (w)

Assistant Editor

Mark Twigg, 46 Norfolk St., Killara. 498 2996

Safety Officer and ASF Correspondent

Richard Mackay, 16 Northcote Rd., Lindfield. 46 1760

Jim Seabrook Memorial Committee Member

Peter Winglee, 25 Nowranie St., Summer Hill. 799 6403 (h)
230 0277 x373 (w)

Committee Members

Ross Newbery, 10 Asquith St., Oatley. 57 3434
Ivan Desailly, 7 Eddie Ave., Panania. 773 3861
Judi Strickland, 37 Naroma Rd., Northbridge. 95 3236
Graeme Smith, 7/21 Sproule St., Lakemba. 750 4072 (h)
666 9841 x319 (w)
Chris Dunne 114 Woodlands Rd., Taren Point 525 8469
Randall King, 89 Marian St., Enmore. 519 5296 (h)
439 2566 x35 (w)

FUTURE EVENTS

December

Thursday 4th. SUSS general meeting. Norm Poulter will talk on 'Some remote and inaccessible places'.
Common Room, Holme Bldg. 7.30 pm

13th-14th Jenolan. Mammoth, Spider & Southern Limestone.
contact: Mike Lake 524 5229

26th-31st Cave Convict - ASF Conference at Pharmacy College, Melbourne. Ian Mann has reistration forms. Various trips are planned before and after.

Dec.-Jan New Zealand. Contact Steve Bunton 524 8116. Includes Harwood Hole and Nettlebed.

January

NO GENERAL MEETING

10th-11th. Bungonia. Contact: Ian Mann 631 4321

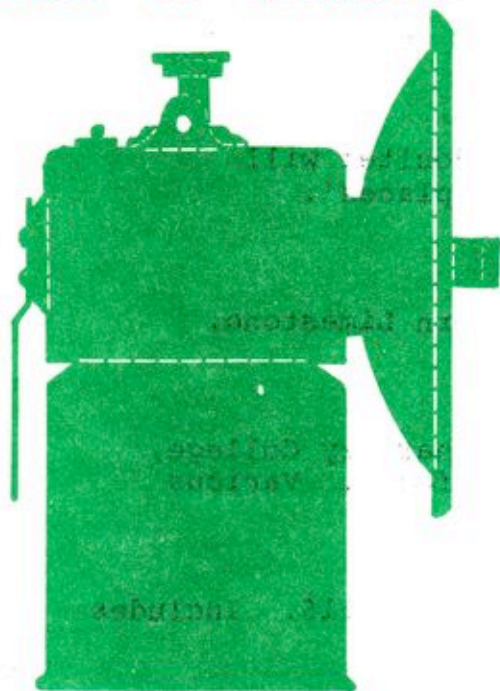
17th-18th Bungonia. Contact Ian Mann 631 4321

Tuesday 27th SUSS Committee Meeting. Peter Winglee's place: 25 Nowranie St. Summer Hill



Caving
takes life...

Lumen in Tenebris



VOLUME 20 Number 7

November & December 1980

SUSS

BULLETIN
of the

SYDNEY UNIVERSITY
SPELEOLOGICAL SOCIETY

BOX 35, HOLME BUILDING,
UNIVERSITY OF SYDNEY,
N.S.W. 2006

CONTENTS

- 97 So you think you are a good caver ?
quiz by "Death Wish"
- 99 Trip Report - Jenolan Mike Lake
- 101 Pike Descenders - advert (?)
- 102 Committee Members
- 103 Future Events