

Volume 23

Number 4

February 1984

BULLETIN *of the*

Sydney

University

Speleological



Society

Annual Subscription \$6

Printed by Sydney University Publications, NBH 0712 — Category B.

Box 35, Holme Building, University of Sydney, N.S.W. 2006.

Trip Report
Kangaroo Island, South Australia
16th-20th December, 1983

Kristin Young, Keir Vaughan-Taylor, Graeme Galloway

As I sailed away from Kingscote, the main town on Kangaroo Island, after the post-A.S.F. conference trip in January, 1983, it seemed that it would be a very long time, if ever, before I returned. However, as luck would have it, a pilot friend offered to fly a small number of us to the island in December, an offer that was readily accepted.

During the January trip we had enjoyed a number of excellent karst areas, which included the Kelly Hill Caves Park. Kelly Hill was the focal point for our speleological activities for the December trip and my best expectations were far exceeded by our experiences there.

Friday, 16/12/83

We arrived at the Kingscote airport on K.I. about 6 hours after leaving Sydney, our journey being abbreviated by an hour long stop-over at Griffith airport for re-fuelling. Upon collecting our hire "car" we drove to Kingscote where we stocked up on essential supplies from the Ozone pub, which is a breath of fresh air amidst the salty surrounds of K.I. We then drove the 80km or so to the Kelly Hill Caves where we set up camp.

Keir, Kristin, and I contemplated many vagaries of life over some excellent Westend XXX South Australian beer (which thoroughly deserves its X-rating) before hopping off to bed.

Saturday, 17/12/83

Late morning we met with Ranger Roger Collins and decided to investigate the cave I had made 2 forays into in January, 1983. The cave is situated very near to the Kelly Hill tourist cave and the entrance is either Silt or Possum Hole. Roger informed us that he had recently done a through trip from here to the Bell's Entrance, which is situated on the other side of the hill, the way being marked by strategically placed pieces of toilet paper. (I could have used well such a track marker when I became lost in this cave whilst searching for the connection to the tourist cave in January.)

Along with one of the Kelly Hill guides, we slithered down the fairly tight entrance, at the same time hitting the ground vigorously in order to warn any waiting snakes of our descent.

We proceeded down the steep dirt slide from the bottom of which the way on is to the left through a tight squeeze, although Keir managed to avoid the squeeze by veering off to the left part way down the slide. About 40m of crawl-through passage leads to a very challenging rockpile. Following its base affords a way on to Trogg's Delight. However, the short climb up to the top is well worth pursuing in order to observe the myriad of superb formations there, some of which we photographed.

Thirty metres along the top of the rock-pile we climbed down a few metres and were confronted by an incredible scene of cave formations. In one section here hundreds of straws are tightly packed into a tiny area. In another, calcified tree roots are criss-crossed by helictites and straws, but the most incredible formation was awaiting us at the bottom of the rock-pile. Clinging tenuously to the low roof is a massive formation, at least 1m long and 1/2m wide, parts of which twist and turn around the main body of this inexorably beautiful, surreal formation. It is attended by numerous helictites, straws, stalagmites, stalagmites, shawls, columns, and calcite coated tree roots. The only other formation I have seen that might rival this extent is another similar, though, smaller formation situated a few metres behind it.

This was indeed Trogg's Delight.

Many enjoyable hours could be spent simply looking at this expanse of decoration. Keir took many photos here, the difficult thing being to decide what not to photograph.


From Trogg's Delight we followed the track markers through passages decorated by singing shawls, excellent flowstone, and many other kinds of formation. Eventually, we arrived at the steep dirt slide which leads up to Bell's Entrance.

Emerging from the cave we quickly found a nearby tight hole which we descended into. A steep slide leads down for about 20m to two possible ways on. One is a tight, down-sloping tunnel which Keir forced himself some way into only to find that it choked off after about 4m. Just above this another passage leads off horizontally. Keir removed a large rock from its entrance, and we proceeded along for about 10m but there were no obvious ways on.

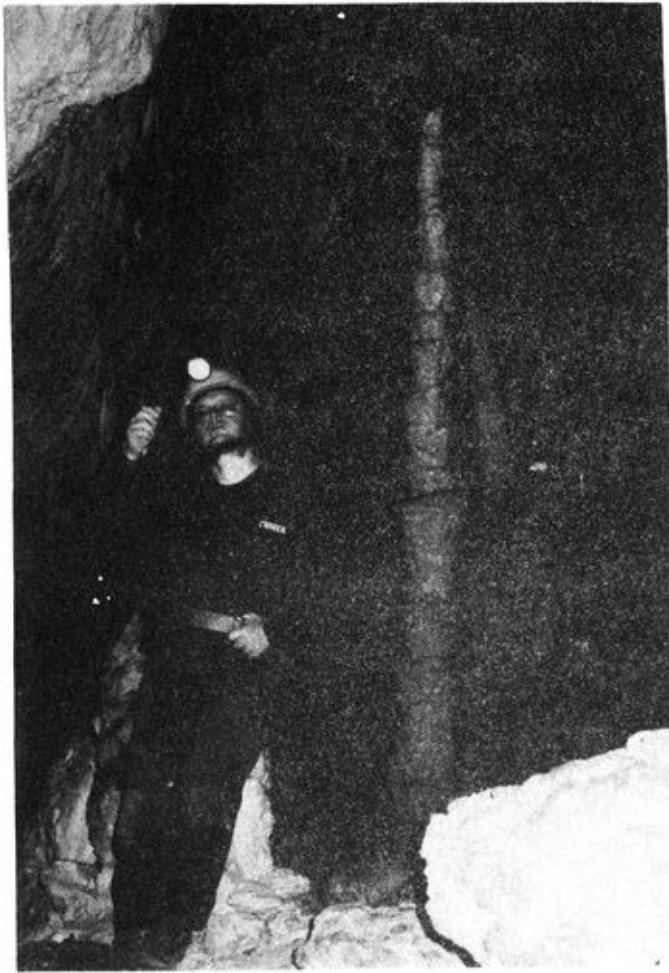
We emerged from the cave to be greeted by the 35 degree C+ temperature that was to characterize our days at Kelly Hill. The heat, and all other things considered, the 3 of us reached an easy consensus that the afternoon should be spent touring at the south-west extreme of the island.

We drove into the Flinders Chase National Park, stopping off on the way to Remarkable Rocks to play with wallabies, koalas and other more intoxicating creations. Keir and Kristin emitted the appropriate sounds of incredulity upon seeing Remarkable Rocks, which are a collection of massive, element-sculptured, granite boulders which rest upon an immense granite dome overlooking the surging, deep blue waters of the southern ocean.

From Remarkable Rocks we travelled the 8km to Cape du Couedic, which features the astounding Admiral's Arch, which is a gaping archway which has been carved through the headland. A short distance off the coast are two small islands, the Casuarina Islets, where we could see a number of fur seals basking in the late afternoon sun. We investigated a 50m sea cave close to the arch and took numerous photos of the arch and its surrounds, including a startled fur seal I almost stepped on, before returning to Kelly Hill for the evening's caving activities. PP. Following a hasty dinner at the campsite, we set off to explore the Kelly Hill cave via the old tourist route, which is entered by proceeding down an ancient, shaky 8m ladder. Along the track to the left of the ladder base, we passed through a large, well decorated chamber, the way on from



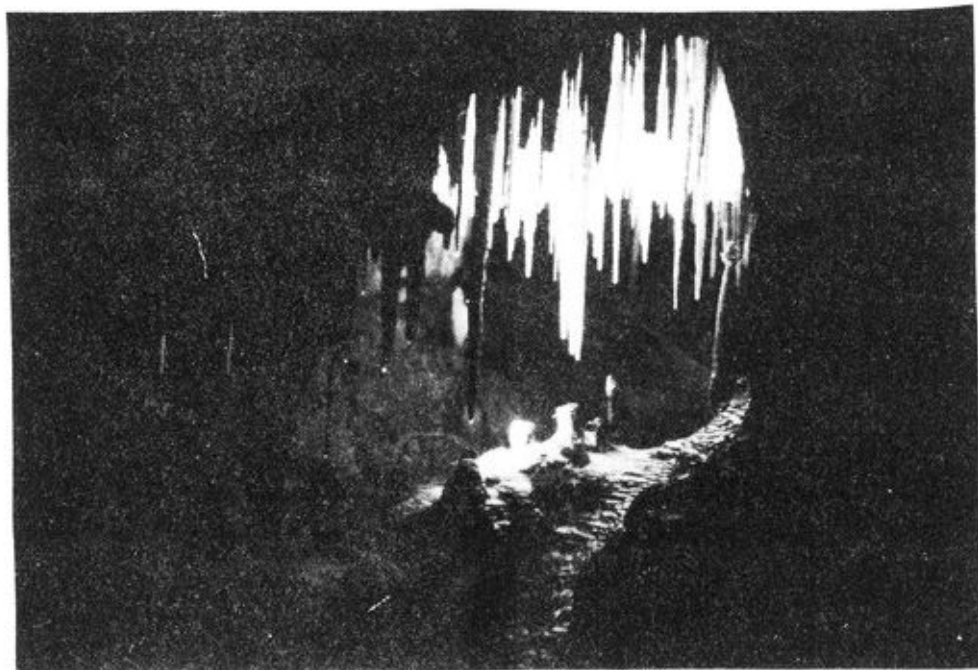
Silt Cave, Kelly Hill.

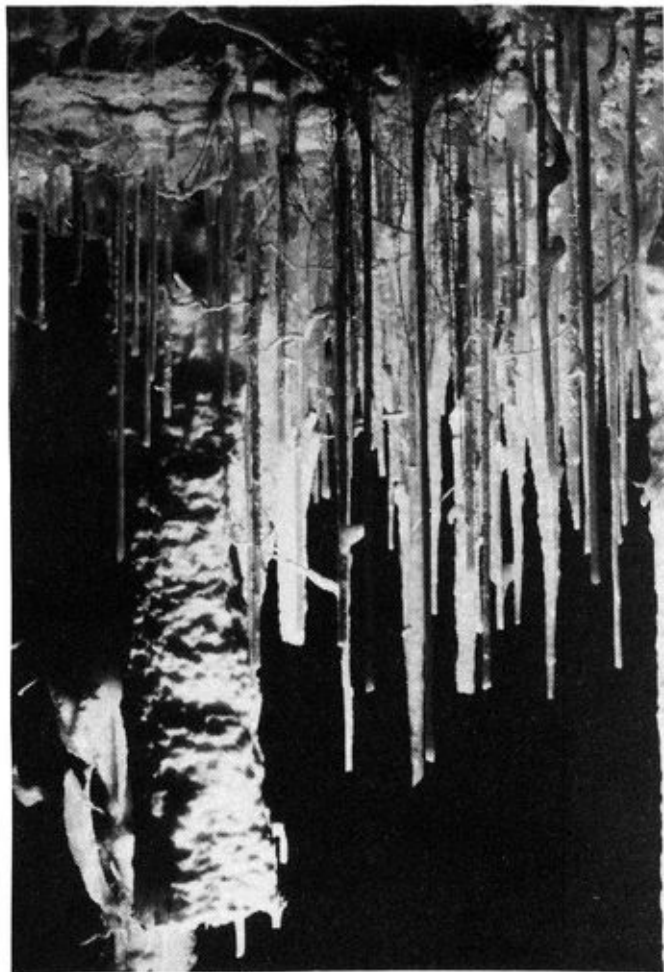


Silt Cave, Kelly Hill.

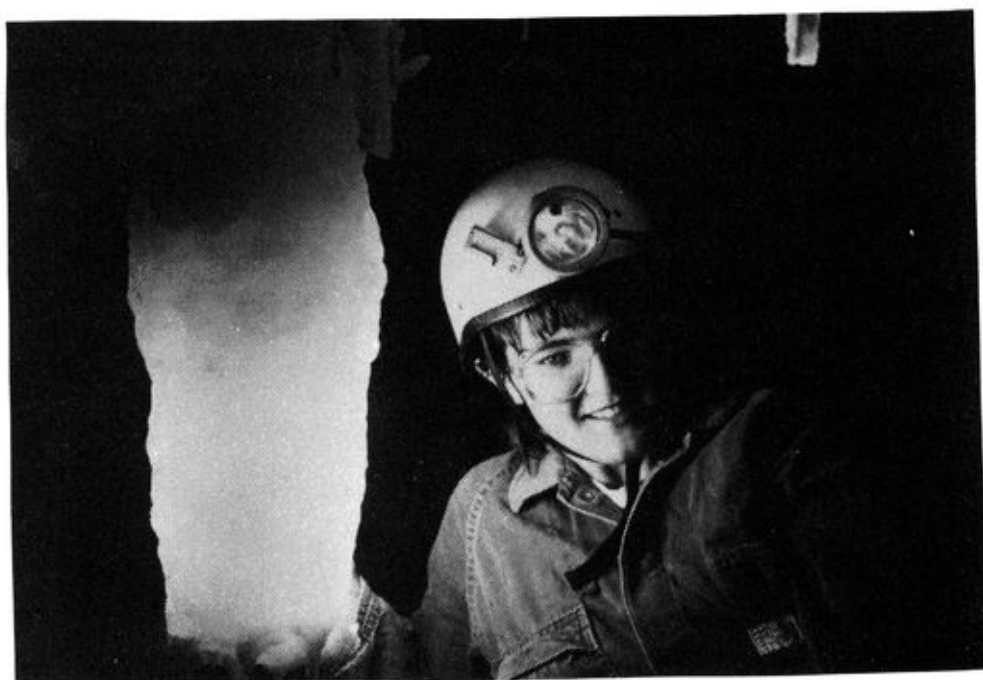


Trogg's Delight.





The Delights of Trogg's Delight.





Remarkable
Rocks →



Admiral's
Arch, at
Cape du
Couedic.

which was via a low, crawl-through section shored by sturdy looking wooden beams. At the end of the crawl the way on is up a steep slope. From the top of this slope the way to the current tourist section is to the right, but we proceeded straight ahead with the general aim of finding the connection to Trogg's Delight.

Passing by excellent decoration, much of which we photographed, we climbed down an extensive flowstone slope into a large chamber. Numerous arrows showed the way on and we followed them enthusiastically, feeling sure that this time we had found the way through to Trogg's Delight.

A walk-through, damp, mud-coated passage led to a 1m long stick embedded in the floor. From here, our excitement mounting, we forced ourselves through a tricky upwards squeeze which resulted in a rocky crawl. At the end of this, a rift led off to the right. We followed this into a large chamber which, I announced proudly to the others, looked familiar. Indeed it was! We had arrived back where we started from - the same arrows benignly pointing the way on to where we had just been.

The connection to Trogg's Delight had eluded us. We then went on to the tourist section of the cave and, considerably more photography later, we left the cave at about 1am.

Sunday, 18/12/83:

This was the day that we did Frosted Floor Cave. Situated about 3km from the camping area, the way to this cave is along the tourist track to Henson's Bay.

By the time we set off, the temperature was about 40 degrees C and, given that we missed the turn-off from the track and proceeded another 3km further afield, we were fairly dehydrated by the time we had retraced our steps, found the turn-off, and then found the cave, some 300m off the track. Mercifully, Keir volunteered to go back to camp to get drinks for us, during which endeavour Kristin and I rigged the 20m pitch into the daylight entrance chamber with 2 10m ladders and a belay rope. About an hour later Keir made his welcome return with the liquid nourishment, and following our imbibing, we proceeded down the ladders.

During my January visit to this cave, a brief peer down the entrance pitch had revealed a number of live snakes awaiting our descent. This time, the only obvious living thing below was a huge goanna, measuring somewhat more than a metre in length. However, by the time we had descended, the goanna had run off to hide, and our caving was untroubled by any such distractions.

The entrance chamber of Frosted Floor Cave is quite incredible. At the bottom of the pitch there is a large mound which could well contain many archeologically interesting specimens. All over the top of the mound, and for about 100m down the walk-through main passage, there are many different kinds of animal bodies in various stages of decomposition. One that particularly took our attention was the mummified body of what appears to be a possum. The look of sheer terror on the animal's face was astounding, and we took numerous photos of this and other bodies there.

Looking back to the entrance chamber from part way into the cave was most inspiring. The sombre, primeval chamber seemed aglow

with a dull, greenish hue and this, together with the strewn skeletons, massive dirt mound, immense boulders and stark, etched walls deeply impressed each of us.

We made our way along the main passage, the floor of which is coated with hard packed calcite. About 100m in, the passage branches off in 2 directions. The walk-through, right hand branch leads past an unstable rockfall to the point of the cave I reached on the January trip. From here the roof descends quite abruptly. Kristin crawled some way on and could see signs of intermittent water flow. After Keir had photographed a number of features in this section we then explored the left hand branch of the main passage.

Squeezing through a tight 3m tunnel we emerged into a small chamber from where a down-sloping, crawl-through tunnel led off straight ahead. The area was obviously well trogged and I set off to follow the passage, which, after a sharp right hand turn, leads on, becoming narrower, for about 25m to a small chamber which has some decoration. The way on is via a short, sandy crawl which leads to a large, walk-around chamber. Following the well-trogged path up and across the rockpile and then down a few metres we arrived in another large chamber which appears to house periodically a lake. From this chamber a tight passage which had obviously been dug out was pursued by Keir for quite some way before he turned back to report that it appeared to go well beyond the point he had reached.

We then returned to the surface and found the contents of the last can of soft drink boiling in the late afternoon sun. After we arrived back at camp we decided that the 160km round trip to Kingscote for a meal and cold beer would be a good idea. It was.

Monday, 19/12/83:

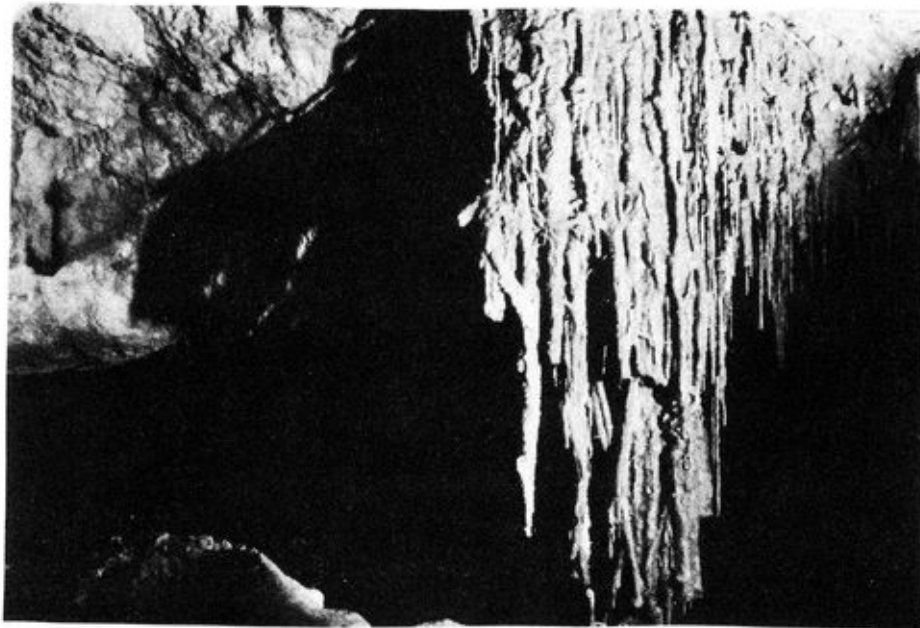
We began the day's caving by exploring a cave entrance just off the "5 minute walking track" near the tourist cave entrance. The aim was to investigate for Ranger Collins whether it led to Bell's Entrance since, if it did, it would establish that it was the K2 entrance. Crawling for much of the way across a very sharp floor we soon found the Bell's Entrance and emerged.

After returning to the office and reporting to Roger, Keir set off, shovel in hand, to dig out a most promising blowing hole situated about 30m up the creek bed from the office. Roger told us that when the creek is running, its waters flow into this hole at a great rate, never to be seen again. This information, coupled with the very strong, cold wind that blows from the hole, and the fact that little digging had ever been done there, spurred Keir's digging efforts on despite the exceptional heat.

Meanwhile, Roger, Kristin, and I proceeded back to Kelly Hill Cave, again with the aim of finding the connection to Trogg's Delight.

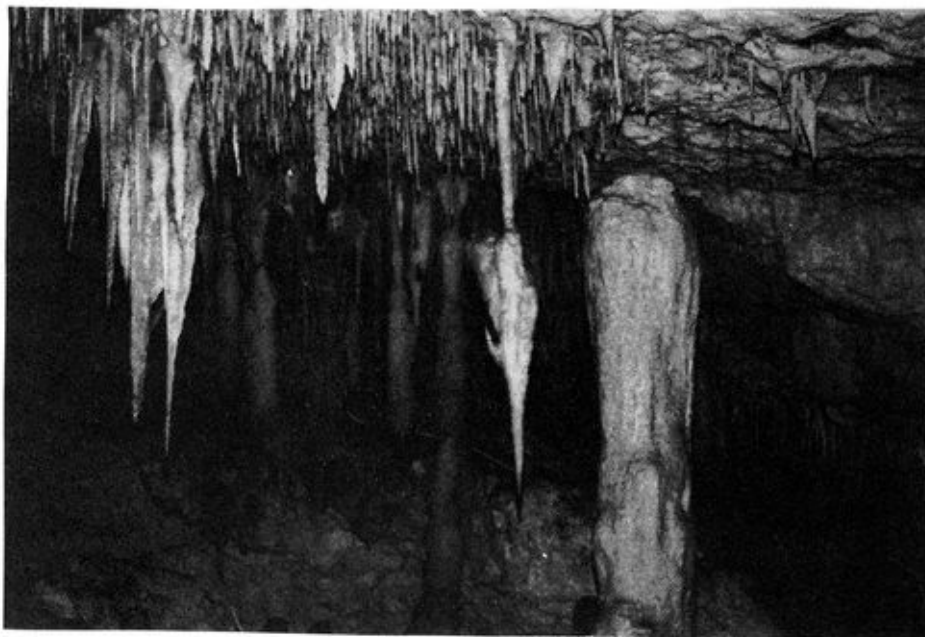
The massive effort that Roger and his associates have devoted to the development of the Kelly Hill Cave for tourism is very commendable. The result is that the cave is already of world standard, its potential being far from exhausted.

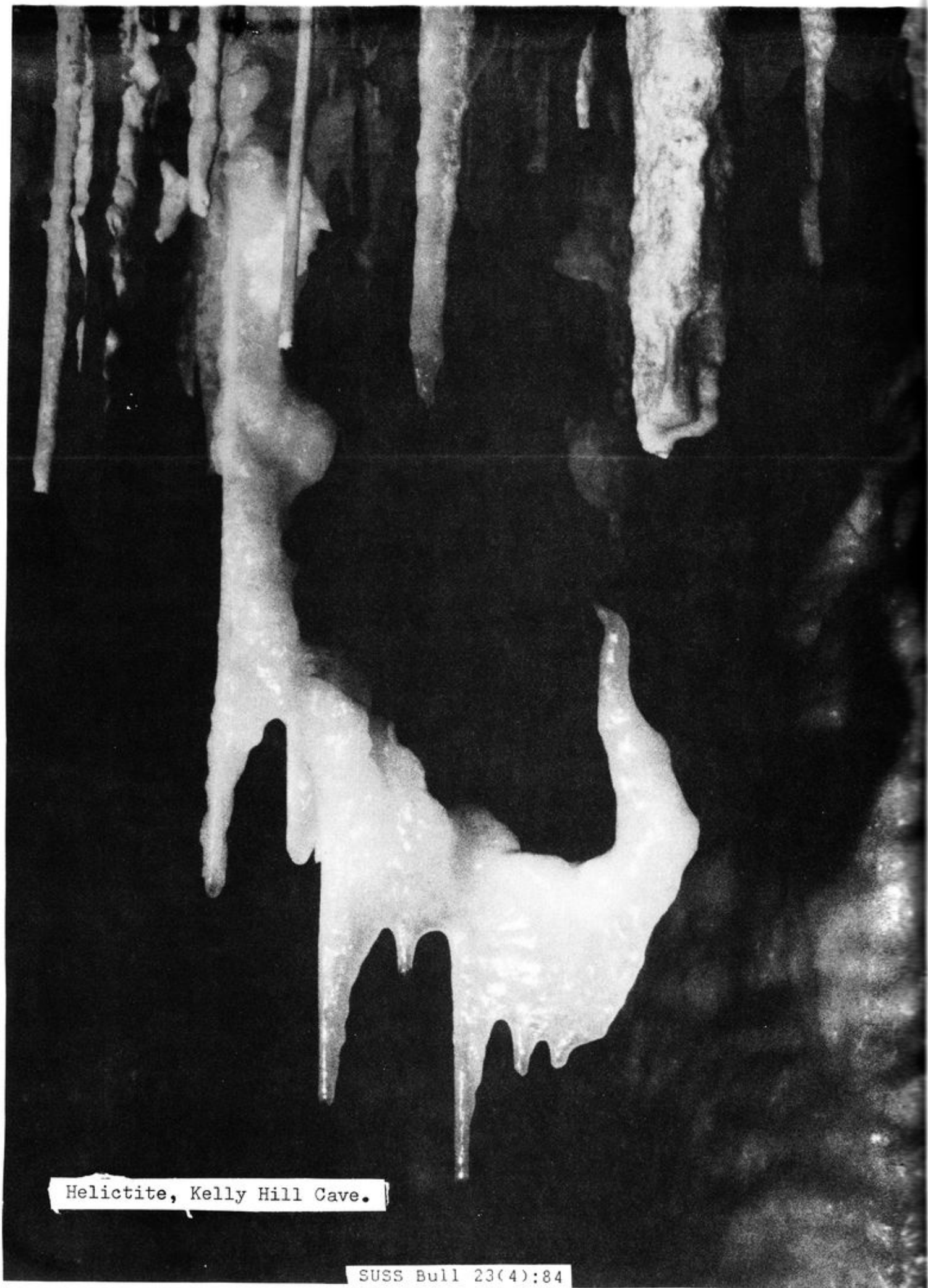
Guided by Roger, who has made the Trogg's Delight-Tourist Cave connection starting out from Bell's Entrance, we proceeded off the



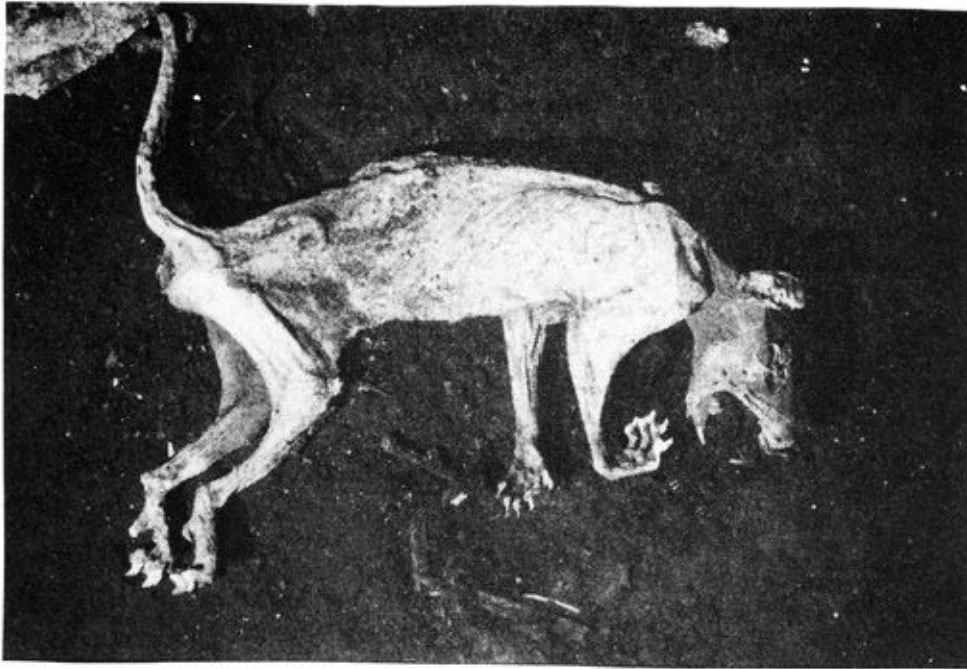
Calcified tree roots,
Kelly Hill Cave.

Kelly Hill Tourist Cave.

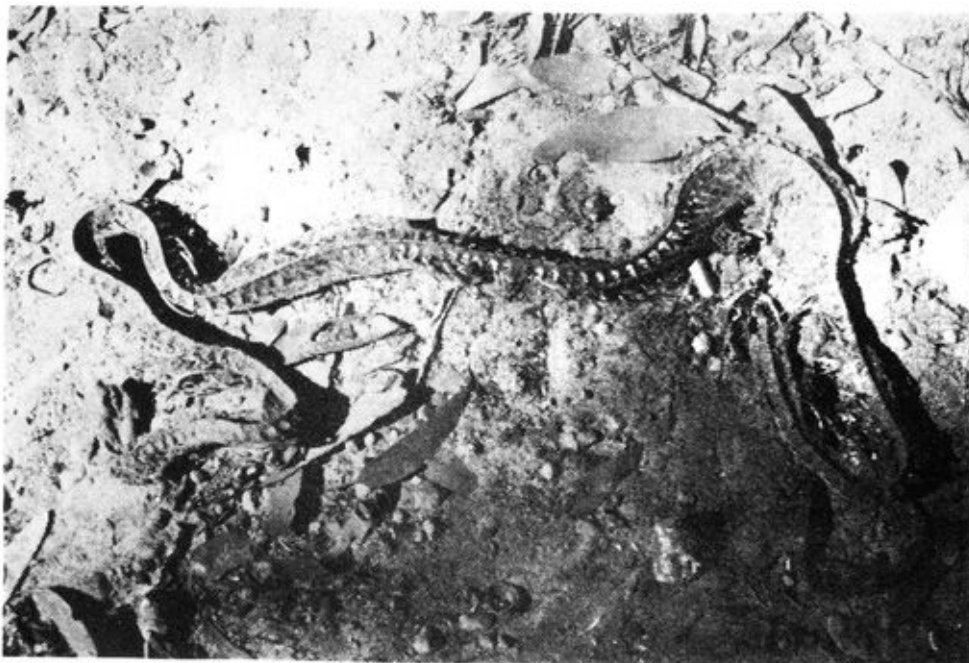
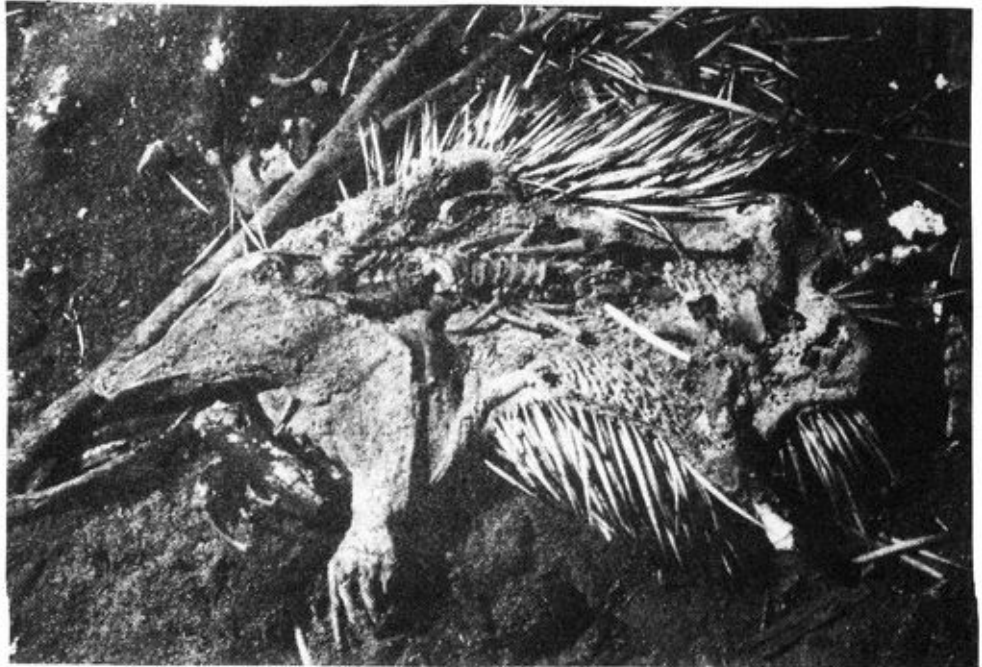


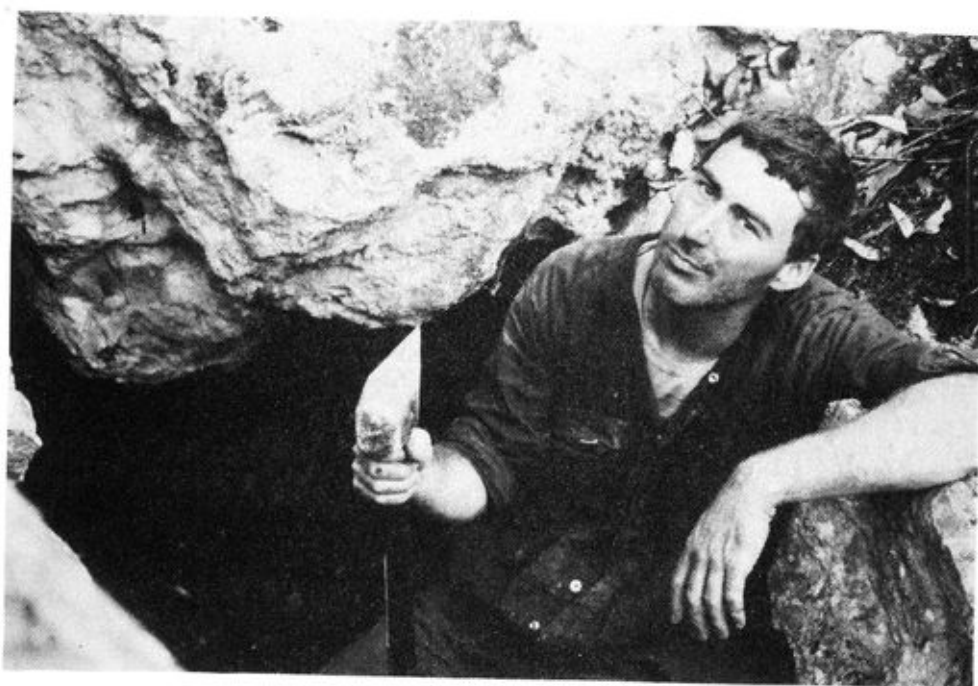


Helictite, Kelly Hill Cave.

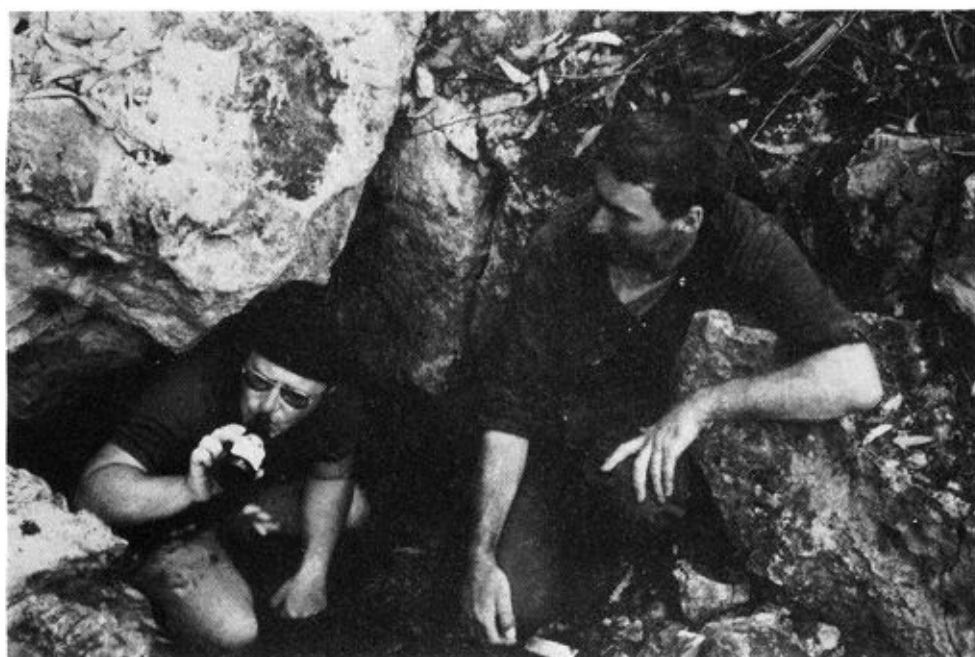


Mummified
animal
remains,
Frosted
Floor
Cave,
Kelly Hill.





The Dig, Kelly Hill.



tourist track and down a steep flowstone climb. The only promising lead we were able to find led to a narrow squeeze which is blocked by a rockfall. I managed to get about half way in, and began removing some of the smaller rocks. Unfortunately, this caused some of the larger rocks higher up to start falling onto me. Fending them off with my helmet, I retreated a short way back and continued removing rocks until it became obvious that there are more pleasant ways of getting stoned. We then decided to leave the cave.

Arriving back at the dig we found a tired, hot Keir still wielding the shovel, having already removed some tonnes of debris. The cold wind was blowing as hard as ever from its mysterious source, but the tight tunnel uncovered by Keir proved, at least for the time being, to be impassable.

Our stay at Kelly Hill had been most rewarding. There is still a great deal of exploration to be done there, and there appears to be every chance that further major discoveries will be made.

Special thanks are conveyed to Ranger Roger Collins and his staff for their hospitality, encouragement, and advice during our visit.

Graeme Galloway

CONSTITUTION

1. Name

The society shall be called the Sydney University Speleological Society.

2. Objects

- a) To unite those graduates, undergraduates, and members of the staff of the University of Sydney, and all other people, who are interested in the exploration and mapping of Australian cave systems.
- b) To foster Speleology as a science and as a sport.
- c) To develop interest in, and to encourage the preservation of, Australia's natural subterranean regions and have suitable areas declared Natural Reserves.
- d) To co-operate with other bodies in the furtherance of these aims.

3. Membership

- (a) Those eligible for membership of the Society shall be:
 - (i) All graduates, undergraduates, and members of the staff of the University of Sydney, and graduates of other Universities, who subscribe to Clause 2 above.
 - (ii) Such other persons who subscribe to Clause 2 above.
- b) Admission to Membership
 - (i) Before admission to any grade of membership, a candidate shall complete at least thirty hours caving in non-tourist caves on at least two Official Trips and be approved by the Committee upon their being satisfied of the candidate's caving proficiency.
 - (ii) The Society shall have three possible courses of action in considering an application for admission to membership: acceptance, rejection, or deferment for a period not exceeding six months pending satisfactory evidence of compliance with such further requirements as the Committee may prescribe, subject to Paragraph 3 b (i) above.
- c) Grades of Membership
 - (i) Full membership may be open to those satisfying Clauses 3 a (i) and 3 b above.
 - (ii) Associate membership may be open to those satisfying Clauses 3 a (ii) and 3 b above.
 - (iii) Persons whom the Society wishes to honour are eligible for election to Honorary Life Membership. The Committee will receive nominations for Honorary Life Membership from not less than five members. On acceptance by the Committee, the nomination will be submitted to a General Meeting. The election of the nominee shall require the approval of 90% of the members present and voting.
- d) Except as provided in Paragraph 4 a, Associate and Honorary Life Members shall have the same rights as Full Members.
- e) All members of the Society shall abide by the Code of Ethics as defined in the By-Laws.

4. Committee

- a) Government of the Society shall be vested in the Committee which shall consist of the President, Vice-President, Honorary Secretary, Minutes Secretary, Honorary Treasurer, Councillor of the Australian Speleological Foundation, Editor of the SUSS Bulletin, Librarian, Safety Officer, Equipment Officer, and three general committee members, all of whom shall be members subscribing to Clause 3 c above, provided that the majority, including the President, shall subscribe to Clause 3 c (i) above. In addition, the Safety Officer shall fulfil the requirements of a Trip Leader.
- b) The Committee shall hold office from the Annual General Meeting at which its election is announced until the Annual General Meeting of the following year, or until successors be appointed.
- c) Any Committee Member absent without apology from three Committee Meetings per year shall be deemed to have resigned from the Committee.
- d) Vacancies in the Committee shall be filled by a By-Election at a General Meeting. Such Committee Members then elected shall hold office until the Annual General Meeting following their election, or until their successors be appointed.
- e) The Committee shall have the power to appoint Sub-Committees, enact By-Laws, and do such other lawful things as it may deem incidental or conducive to the attainment of the Objects of the Society.
- f) A majority of the Committee shall constitute a quorum.
- g) Voting at Committee Meetings shall be limited to one vote for each Committee Member.
- h) Only the Committee shall have the power to recommend to the General Meeting the setting and charging of subscription fees, trip fees, or any other charges it finds necessary to levy in order to carry out the Objects of the Society.
- i) The Committee shall have the power to accept donations, grants, allotments, or any other finance from any person, society or corporation.

5. Trip Leaders

- a) Official Society trips must be led by Trip Leaders.
- b) Trip Leaders shall be appointed by a majority of the Committee.

6. Elections

- a) The Committee for the ensuing year shall be elected at the Annual General Meeting of the Society.
- b) Voting shall be by secret ballot if three members present and voting so request.

7. Meetings

- a) The President shall have the power to convene and act as Chairman at Annual General Meetings, General Meetings, and Committee Meetings. In the President's absence, the Vice-President shall carry out the President's duties.
- b) The Annual General Meeting of the Society shall be held in Lent Term each year.
- c) The Committee, or five financial members by written request, may direct the President to convene a General Meeting.
- d) Only Full Members, Associate Members, and Life Members shall be eligible to vote at Meetings.
- e) A quorum at any General Meeting shall be one-fifth of the total number of Full Members, Associate Members and Life Members.
- f) Notice of any General Meeting shall be given at least fourteen days in advance. Such written notice shall be sent to each financial Member, and where possible advertised in University publications.
- g) A two-thirds majority of Members present and voting at any General Meeting shall be required to reverse any Committee decision.
- h) Written proxy votes shall be allowed at all Meetings, only to the extent that they reflect a member's intended vote on a specific motion.

8. Discipline

- a) A Member alleged to have breached the rules of the Society, or to have caused material or wanton damage, or loss of equipment, or whose conduct may reflect unfavourably on the Society, shall be called upon by the Committee at a Meeting convened specifically for the purpose, to show cause why he should not be recommended for temporary or permanent suspension of any or all of the rights of membership

of the Society. The results of such a Meeting shall be presented to the General Meeting whether the member is recommended for suspension or not. The General Meeting shall have the sole right to suspend members.

- b) Compensation may be deemed payable by the said General Meeting in relation to the behaviour pursuant to Clause 8 a.

9. Finance

- a) The Financial Year shall begin on the first day of February in any year and end on the last day of January of the following year.
- b) Subscriptions for the current year shall be fixed at a General Meeting. At least fourteen days notice of such a motion shall be given to Full Members, Associate Members and Life Members.
- c) Members who have not paid their subscriptions by the second General Meeting after the due date shall be deemed unfinancial and shall, at the discretion of committee, be assumed to have relinquished all rights of membership. Notice of at least fourteen days of the due date shall be sent to all Members.
- d) Expenditure of Society Funds
 - (i) All monies received by the Society shall be paid into the Commonwealth Savings Bank Account. All disbursements over the sum of twenty dollars (\$20.00) shall be paid by cheque.
 - (ii) All cheques shall be signed by any two of the following: President, Honorary Treasurer, Honorary Secretary.
 - (iii) An itemised account must be presented to and approved by a Committee Meeting for any expenditure of Society funds, or funds administered by the Society.
 - (iv) Any decisions by the Committee concerning expenditure must be implemented within the Financial Year in which the decision is taken, otherwise the decision shall have no force or effect.
 - (v) For the purpose of this Constitution, "expenditure" shall mean any contract, agreement, or order which carries any compulsion for the Society to expend funds.
- e) Duly audited accounts for the previous Financial Year shall be presented to the Annual General Meeting.

- f) The income and property of the Society whensoever derived shall be applied solely towards the promotion of the Objects of the Society, and no portion thereof shall be paid or transferred directly or indirectly by way of dividend bonus or otherwise by way of profit to the Members of the Society.
- g) If upon winding up or dissolution of the Society there remains, after satisfaction of all its debts and liabilities, any property whatsoever, the same shall not be paid or distributed among the Members of the Society but shall be given up or transferred to some other body or bodies having similar objects to the Objects of the Society, to be determined by the Members of the Society at or before the time of dissolution or in default thereof by such Judge of the Supreme Court of New South Wales as may have or acquire jurisdiction in the matter.
- h) Publications Fund
 - (i) All funds received from the sale of publications shall be paid into a special fund called the "Publication Fund".
 - (ii) Funds within the Publication Fund may only be used for the purpose of producing, publishing and distribution of publications authorised by the Committee.
 - (iii) A statement of transactions and balances in the Publications Fund shall be presented by the Treasurer with that person's Annual Report.
 - (iv) The Publication Fund Annual Statement will have the following declaration as a footnote, "The Constitution of the Sydney University Speleological Society forbids any dealing with the funds of the Publication Fund for any purposes other than for the production of publications by the society, not including the regular bulletin."

10. Constitution

- a) Notice of any alteration of the Constitution shall be submitted in writing to the Committee at least twenty-eight days prior to the General Meeting.
- b) Members eligible to vote shall receive at least fourteen days written notice of the proposed amendments.
- c) Alteration to the Constitution shall be made by a two-thirds majority of Members voting.

BYLAWS

A. Membership

1) Applications

When an application for admission to membership of the society is submitted, this application shall be considered at the following Committee Meeting, at which meeting a report, either written or verbal, shall be received from at least one of the Trip Leaders of the applicant's Official Trips.

2) Badges

Badges and car stickers shall be sold only to Members for the prescribed fee.

3) Publications

The Society shall publish a newsletter, to be known as the "SUSS Bulletin" which shall be distributed to all Members and subscribers.

4) Prospective Members

Prospective Members may receive the Society's circulars and other information for a period of six months after payment of a fee. If a Prospective Member becomes a Full Member or an Associate Member within six months of paying the fee, then the fee will be deducted from his appropriate membership fee.

5) Discipline

The Committee may, at its discretion, suspend the membership of a person alleged to have either breached the rules of the Society or refused to obey the decisions of the Committee and/or General Meeting and whose alleged conduct reflects unfavourably on the Society, until the question of disciplinary action under Clause 8 of the Constitution has been dealt with within a period of fifty days after the suspension.

B. Meetings

1) Meeting Procedure

a) The procedure followed at meetings shall be that laid down by Joske in the current edition of "Law and Procedure at Meetings".

b) There shall be no less than ten (10) General Meetings per year.

2) Committee Meetings

- a) The Secretary shall notify Committee Members of coming Committee Meetings at least one week in advance.
- b) All Members are invited to attend Committee Meetings.

C. Duties

1. Committee Positions

a) President

- (i) the convening of meetings, including venue and speaker.
- (ii) official representation on behalf of the Society, when required.

b) Vice President

to stand in for President when he/she is not available.

c) Secretary

to handle all official correspondence, including applying for permits to restricted areas.

d) Minutes Secretary

- (i) the recording of all minutes at Committee Meetings and General Meetings.
- (ii) to ensure that the minutes book is at every Meeting.

e) Treasurer

- (i) the administration of the Society's finances.
- (ii) to submit a financial report at each Committee Meeting. This report shall contain details of all financial transactions and accounts for payment, transacted since the last Committee Meeting.

f) Editor

duties as set out in Clause A 3 of the Society's Bylaws.

g) ASF Councillor

all matters pertaining to the Australian Speleological Federation (ASF), including the sending of regular written reports of the Society's activities to the ASF Newsletter.

h) Safety Officer

- (i) to keep up to date with current overseas and local safety practices.
- (ii) to regularly inspect equipment and report on its condition to the Committee and Equipment Officer.
- (iii) to make recommendations of safe practices and make sure they are carried out.
- (iv) to act as the Society's representative on the ASF Safety Subcommittee.
- (v) to organise Search and Rescue trips and Field Days as directed by the Committee.

i) Equipment Officer

- (i) to store the Society's equipment.
- (ii) to lend equipment according to club rules and record borrowings on the appropriate form.
- (iii) to inspect equipment on issue and return.
- (iv) to report to the Safety Officer any damage to equipment and to the Committee any failure to return equipment.

j) Librarian

the general maintenance and organisation of the SUSS Library.

k) General Committee Members

to undertake duties as directed by the Committee

2. Trip Leaders

1) Requirements

Before considering any person as a Trip Leader the Committee shall be satisfied that the applicant has sufficient sense of responsibility and discipline to conduct the activities of a trip in a safe manner, and to ensure the conservation of any cave or cave reserve visited. In addition, the Committee shall be satisfied that the applicant is:

- a) sufficiently experienced in the practical aspects of caving to capably lead a party, under the variety of caving conditions likely to be encountered.
- b) familiar with caving technique, SRT, ladder-ing and belaying, safety precautions and design, choice, use and care of caving equipment.

- c) in possession of a current St John's Ambulance First Aid Certificate (or equivalent) and be familiar with procedures associated with caving emergencies.
- d) the Committee shall from time to time, and in any case, at least once annually, re-examine the list of authorised Trip Leaders with a view to appointing additional Trip Leaders and revoking the appointment of those who have failed to fulfil their obligations under the Bylaws.

2) Duties

- a) To publish full details of proposed trips in the SUSS Bulletin and/or announce them at General Meetings, wherever possible.
- b) To obtain Committee approval for a trip
- c) To ensure the Secretary obtains relevant permits to restricted areas.
- d) To make sure any Prospective Member or Non-Member attending the trip undertakes to abide by the Society's rules.
- e) To be thoroughly conversant with the firelighting and other regulations governing the area he/she is visiting and to see that the trip abides by these regulations.
- f) To reprimand and report to the Committee anyone in the Society breaking the Society's rules or local regulations or behaving in any way that could discredit the Society.
- g) To forward a Trip Report, together with Trip Fees within 14 days of completion of the trip. Any Trip Leader who fails to submit a Trip Report or remit these fees within one month of the completion of the trip shall, at the discretion of the Committee, be deemed to have resigned his/her status as Trip Leader.
- h) To see that all SUSS equipment borrowed for the trip is returned to the Equipment Officer within seven (7) days of the completion of the trip in good clean order. Any damages or losses are to be reported to the Equipment Officer.
- i) To make known to the Safety Officer any perils, hazards or misadventures encountered on the trip.

D. Official Trips

- 1) An official trip shall be defined as one for which approval of at least two Members of the Committee has been gained. Only on official trips may Members use the Society's name to gain any privileges.

- 2) A limit on the number attending any official trip shall only be imposed where either the nature of the area or the nature of the proposed work make such a limit essential.
- 3) Providing that such a limit on any trip has not been filled, any Member of the Society shall be entitled to join that trip up to that limit.
- 4) All Members shall give prior notification to the Trip Leader of their intended participation in a trip, and shall obey the reasonable requests of the Trip Leader while on that trip.
- 5) No trip application may be authorised by any Committee Member, unless the intending Trip Leader has been authorised as a Trip Leader by the Committee.
- 6) Non-Members of the Society may attend trips at the discretion of the Trip Leader and, wherever possible, of the Committee. Members and Prospective Members wishing to attend shall have priority over any Non-Member.
- 7) No person shall be in possession of liquor on any SUSS trip without the agreement of the Trip Leader.
- 8) No firearms shall be taken or discharged on trips.

E. Equipment

- 1) The SUSS equipment pool shall make equipment available to Trip Leaders for use on official SUSS trips, and otherwise at the discretion of, and on the conditions set by, the Committee.
- 2) Borrowers shall be responsible for the return of the equipment to the Equipment Officer in the condition in which it was received.
- 3) The borrower of any item of SUSS equipment shall report to the Equipment Officer any faults or damage in that equipment which is likely to affect its future safe and efficient use; the report must be made no later than when the item is returned to the Equipment Officer.
- 4) The pool shall be maintained by grants of Society funds made at a Committee Meeting.

F. Caves

- 1) Any blasting to be carried out underground by a member of the Society will require the approval of the Committee at a meeting before it is carried out.
- 2) Approval of the Committee is required before a name is given to a new cave.

SUSS Code of Ethics

1. Responsibilities to the Community

Members should be conservation-minded at all times, above as well as below ground. Members should not damage or deface the caves either accidentally or by design, especially being careful not to :

- a) walk over clean formation in boots or muddy footwear.
- b) break or deface cave formation
- c) leave rubbish, especially carbide or flashbulbs, lying around in any cave.
- d) write, or leave markings on the walls or roof of any cave, except to unobtrusively record a new discovery.

Members should see that on any SUSS trip no offence is given to the public, property owners, or those who control the caves. Some means of achieving this are:

- a) Carefully observe the established rules of good camping conduct. Don't use other people's fires, wood or water without invitation, and when you do use them, do your share of replacing. Use dead wood as far as possible for tent poles. Leave a campsite in such a condition that it is difficult to tell that it has been camped on recently. Bury rubbish, carbide and human waste well away from camp and tracks. Bury food scraps rather than leaving them on a dead fire or throwing them into a creek. Burn, bash and bury all tins or, better still, carry them out. Always wash and swim well downstream from where all drinking water is obtained. Put out all fires with water.
- b) Close all gates on properties or reserves after use.
- c) Take care to avoid interference to stock and crops.
- d) Gratefully acknowledge any hospitality received.

2. Responsibilities to the Society

In order to continue to visit caving areas, which are all under Government or private control, it is essential that SUSS retains a high reputation. It is the responsibility of every Member to see that nothing occurs on a trip to discredit SUSS. It is even more important that silly stories, either real or imaginary, that reflect unfavourably on SUSS not be started or spread by members. It is essential that good relations be maintained with other Speleological Societies. When visiting an area in which other Societies are interested, notify them and invite their members to attend.

3. Responsibilities to Fellow SUSS Members

No Member should ever do anything to endanger the safety of others attending a caving trip. Furthermore, a Member should not annoy other Members or visitors attending the trip and so interfere with their enjoyment of the trip. Members should realise their responsibilities to other Members, present and future, not to compromise the good name of SUSS.

Future Events

=====

February

=====

21st Committee Meeting. Madsen Tearoom.

26th Orientation Field Day, Avalon

March

=====

1st General Meeting. Common Room, Holme Building, 7.30pm.

3rd-4th Freshers' Trip. Almost certainly Bungonia. Contact Mike Lake (692 3146 (w)); (524 5229(h)).

There will be trips to places like Jenolan, Tuglow, Wyanbene, Wee Jasper and Kalang Canyon during March and April. Contact Mike Lake (as above) and Graeme Galloway (692 3571 (w));

April

=====

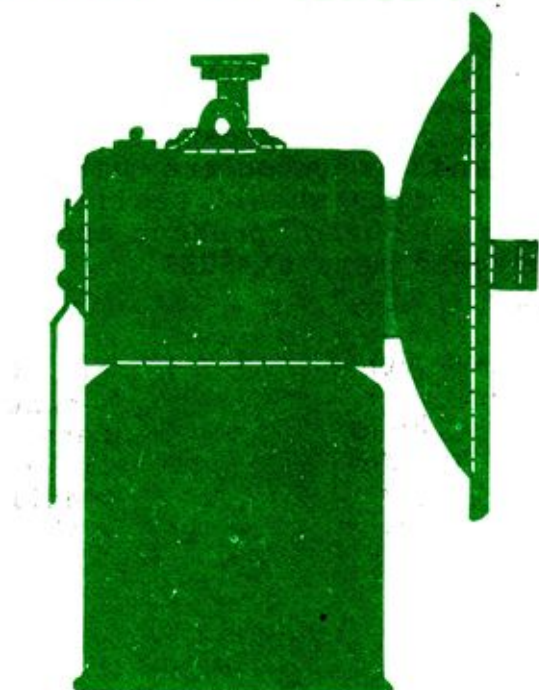
Easter Annual SUSS Cooleman trip

Lumen in Tenebris

Volume 23

Number 4

February 1984



SUSS

BULLETIN
of the

SYDNEY UNIVERSITY
SPELEOLOGICAL SOCIETY

BOX 35, HOLME BUILDING,
UNIVERSITY OF SYDNEY,
N.S.W. 2006

Contents

=====

Page

====

75	Trip Report, Kangaroo Island, Graeme Galloway December, 1983.
86	Constitution
92	Bylaws
97	SUSS Code of Ethics
98	Future Events
99	Contents