



C.D.A.A. Newsletter

No. 87 - MARCH 2004

SENIOR

CAVE DIVERS ASSOCIATION OF AUSTRALIA

(Incorporated in South Australia)

Print Post No. PP 381691/00020

THE SMART PRO HAS JUST RESURFACED WITH A 3 YEAR WARRANTY.



The Smart Pro allows you to maximise your repetitive diving, because its sophisticated adaptive algorithm lets you choose the microbubble setting that suits your diving style.

When it comes to tracking and post analysing your dives, the Smart Pro really is a dive computer with the whole package.

Free Infrared Device

If you buy a Smart Pro before April 30th 2004, we'll also throw in an Infrared device (valued at around \$140), which links Smart Pro directly to your home computer. This, combined with our Smart TRAK software allows you to track and discuss your dives from every angle.

What's more, the Smart Pro long life batteries are free for life. When the batteries are low, simply bring your dive computer back to us and we'll replace them and fully test all functions of the unit, at no charge. Ever.

And, because we're so sure of the superior quality of the Smart Pro, we've now backed it up with a massive 3 year warranty. So check out the Smart Pro at our website or your nearest authorised dealer.

You'll find that when it comes to hi tech features, we've really gone beyond the surface.

*Infrared Device offer ends April 30th 2004.



www.uwatec.com.au

EDITORS NOTE...

Hi and welcome to another issue of Guidelines. I have taken over from David Bryant in writing this spot but David will still continue his excellent work in graphics and layout of our fine publication.

A couple of weeks ago I put out an email to our web list requesting articles (to join, go to www.cavedivers.com.au and register your email address). Well, I was inundated with articles and photos, thanks very much to all and apologies if you didn't make it in this issue.

A jam packed issue this month with articles ranging from course experiences, the "natdir stir", climbing out of Hell's Hole, "unusual" cave exploration practise in PNG through to the very exciting finding by the "Crazy Czechs" Petra and David of the amazing new passage and room at Pines. I was diving sinkholes with my mate Patto last weekend and heard reports that Pines is now taking a hammering since this news was out, with many penno divers checking out the new areas. More exciting stories and new findings from David and Petra to come so stay tuned in future issues. I see even we Directors have even been immortalised on their map.....;-).

Membership renewals are due again (see form in middle tear out pages) by June 30 or earlier if you wish to prebook dives like Kilsby's. Don't forget that the DEH indemnity forms need renewing at the same time as your membership renewals. Our new Records Officer Belinda is gearing up for the busy fun time, please be kind and don't ask for cards to be made on Thursday night for your Friday departure!

To keep up-to-date in between issues don't forget to check out the webpage. We have a new book available in products "The Cave Divers". Also the 30th anniversary t-shirts are now available from Phil Argy, Gambier Dive Centre and also from myself when I am over at Mt G as well as the usual mail order way with Heike.

We have new advertisers coming on board; please support those that support our association. Happy diving and reading...

Terri Allen, Publications and Records Director, pubdir@cavedivers.com.au

~ Articles for Guidelines ~

Members wishing to submit articles for inclusion in guidelines can do so in the following manner:

- Send articles & photos via post, or Preferably by email to:

Terri Allen, PO Box 7592, Melbourne 8004.

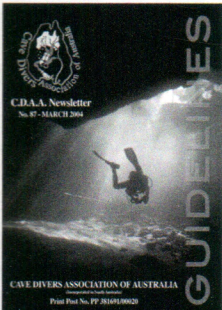
- Email to pubdir@cavedivers.com.au or seapics@alphalink.com.au

- Any files for inclusion should be saved as MS WORD text files. If mailing please send pics and text onto CD.

- Pictures saved from digital camera or scanned from photos must be at least 200 ppi at 15cm wide or equivalent, and saved as Greyscale as JPEG's.

CONTENTS

Editorial	3
New Hidden Chamber in Pines	5-9
A Surprise in Pines	10
High Standards	11
In the Guts of Hades	13-14
Learning to be a Cavern & Sinkhole Diver	15-16
Membership Renewal Form	17-18
Directors Report	20-21
Hell's Hole - My Experience	22
Classifieds	25
Site Access	26/27
Courses Update	28
CDAА Instructors	30/31
Guidelines Photo Gallery	32
CDAА Products	33



Front cover:

Photo credit:
Tewi Cave,
Papua New Guinea

Photo by
Pierre Constant

Composite art design:
David Bryant

CAVE DIVERS ASSOCIATION OF AUSTRALIA

ABN 65 062 259 956

P.O. BOX 4336, LANGWARRIN VIC. 3910

GUIDELINES is a newsletter of the Cave Divers Association of Australia. All articles for the following issue are to be sent to the Editor, David Bryant, PO Box 2198 Rosebud Vic. 3939. All articles and submissions shall automatically constitute an expressed warranty by the contributor that the material is original. We assume no responsibility for unsolicited material. Articles and information may be reproduced without prior permission provided reprints are accredited to the authors and GUIDELINES. Private advertising for caving and diving equipment may be advertised free at the discretion of the Editor. Opinions expressed in GUIDELINES are those of the individual authors and are not necessarily those of the C.D.A.A.

CONTACT LIST

The following is a list of people that can be contacted for CDAА matters. Please contact the most relevant person or, if unsure write to: **C.D.A.A. P.O. Box 4336 Langwarrin VIC 3910**
If you know who you want to write to, please address your letter to the relevant director. Website: www.cavedivers.com.au

NATIONAL DIRECTOR - Warrick McDonald
Phone: BH (03) 9579 2600 Mobile: 0408 374 112
Fax: (03) 9563 8594 Email: natdir@cavedivers.com.au

STANDARDS DIRECTOR - Max Marriot
Mobile: 0428 897 897 Email: dive69@senet.com.au

Investigations Officer - Noel Dillon
Mobile: 0407 530 103. PO Box 112, Queenscliff, Vic. 3225

Instructor Materials & Products - Heike Apps
Phone: 02 6291 0566 PO Box 292 Calwell, ACT 2905
Email: heike.apps@ga.gov.au

CDAА Products - Phil Argy
Phone: (08) 8723 0879 (home) Email: blinkbonney@seol.net.au

BUSINESS DIRECTOR - Richard Price
Phone: BH (03) 9505 0158
Mobile: 0419 308 407 Email: busdir@cavedivers.com.au

Treasurer - Tammy Beattie
Phone: 0417 540 700 Email: tammyb@bobjane.com.au (w)

SITE DIRECTOR - Rob Brennan
Phone: 08 8347 4885. Mob: 0414 821 322.
PO Box 260 Kilkeny SA 5009. Email: sitedir@cavedivers.com.au

Tank Cave Access - Noel Dillon noel.dillon@macquarie.com
Ph: (03) 9635 9290 or Mobile: 0407 530 103

Shaft Access - Linda Claridge Mobile: 0408 052 070
Email: garinda@tpgi.com.au AH: 03 5565 8793

Manager Research & Mapping - Gary Barclay
(03) 5565 8793 (home) P.O. Box 15 Koroit Victoria 3282
Email: garinda@tpgi.com.au

PUBLICATIONS & RECORDS DIRECTOR - Terri Allen
Mobile: 0419 176 633 Email: pubdir@cavedivers.com.au
PO Box 7592, Melbourne VIC. 8004

Records Officer (includes Instructor Records)
Belinda Klein - Ph/Fax: (03) 9750 6494
PO Box 4336 Langwarrin VIC 3910
Email: records@cavedivers.com.au

Designer - David Bryant Email: seapics@alphalink.com.au

REPRESENTATIVES

New South Wales - Andrew Robertson
Ph: (02) 9548 5987 or 0417 664 255 (mobile) Fax: (02) 9548 0032
Email: andrewr2@compair.com.au or buggs@tig.com.au

South-east - Phil Argy
Phone: (08) 8723 0879 (AH) Email: blinkbonney@seol.net.au

PUBLIC OFFICER - Kevin Burrowes - Phone: 08 8272 6833
321 Goodwood Road, Kings Park S.A. 5034
Fax: 08 8272 8066 E-mail: kburrowes-cpa@senet.com.au

CDAА INSURANCE
Combined Public/Products Liability policy limit \$10,000,000.00
Insurer: Sportscover Australia Pty Ltd
Policy #: PMEL 99/0029875 Expiry date: 11 July 2004

New passages and a hidden chamber discovered in The Pines (5L61) July-November 2003

by Petra Fundova and David Funda

Who would have expected it? One of the most frequently dived caves in Mount Gambier as well as a popular CDAА training site, yet over 100 metres of absolutely virgin deep passages and an uncollapsed chamber recently discovered, which together about doubled the volume of this dive site!!

It all started soon after our penetration course in 2003. As freshly certified penetration divers we immediately dismantled our back mounted twin tanks and went for new challenges in the caves of Mt. Gambier with side mounted configurations. Our primary focus was The Pines cave (Cave Exploration Group of South Australia reference number 5L61). Such a mysterious cave with so many luring passages - including the rumors described in Peter Horne's Lower South East Cave Reference Book about an old collapse in the Main Chamber which blocked deeper section of Pines, and the inviting question-marks on Jurgen Gehr's sketch! "Let's check them first and then the rest of the cave", we thought; boulder by boulder, slot by slot. We soon realized that it was going to involve many dives in Pines, and we made good use of Phil Argy's slim 10l cylinders and our 2m hoses.

The question-mark passage on Jurgen's sketch on the way to what was called the "Dark Room" opened up through a squeeze entrance, which we lightheartedly called the "C(z)eck/h Point". It really checks the configuration of your gear, guys, especially if you are about to enter into a small room behind which we called the "Fantasy Room"! From there, there is a connection to a silty wall which drops from passages above so you can dive it as a loop. However, as we continued down to the Dark Room we had fun checking the walls of the room, remembering that many passages at the Nullarbor don't start right from the bottom but rather from the ceiling.

And so it was in Pines; at the very end of the Dark Room there is a low flattener at ceiling height, from where we found a steep passage going about a metre and a half down through a tight squeeze and ending at a small 50x40cm-wide window. "Hmmm, maybe another Fantasy

Room?" So we pulled out a 25m jump-reel and headed down.

The restriction was too tight for two cylinders, so we had to do some gear removal with our side mounts. When we went through we couldn't believe our eyes ... what a surprise! Not a small, silty room, but a spectacular, beautiful passage - "Surprise Tunnel"! A spacious tunnel, with the bottom covered with thick, smooth silt without a single marking or scratch. Wow! - it took away our breath!

We swam next to each other for about 12 metres and got to a crossing. It was getting even better - two tunnels! We firstly turned left ("Bunyip's Tunnel"), where the passage drops down to a depth of 37 metres and then goes up over a small rockpile to 33m with a large slab on the left hand side. The tunnel here was getting larger and went down the rockpile again (2 or 3 divers can easily swim together there) to about 40m. This was when we found that our bloody jump-reels were hopelessly short! Nevertheless, we had a brief look around and noted that a flat restriction led a little bit deeper. It was now time to swim back as breaking into such new passages did not improve our air consumption at all. What an unforgettable dive this was in Pines on July 12, 2003. Needless to say where in Pines we would be diving next time!

With bigger reels and more tanks for staging and decompression, we explored these new passages during about 15 dives til the beginning of October 2003. At the beginning of the Bunyip's Tunnel there is a very short

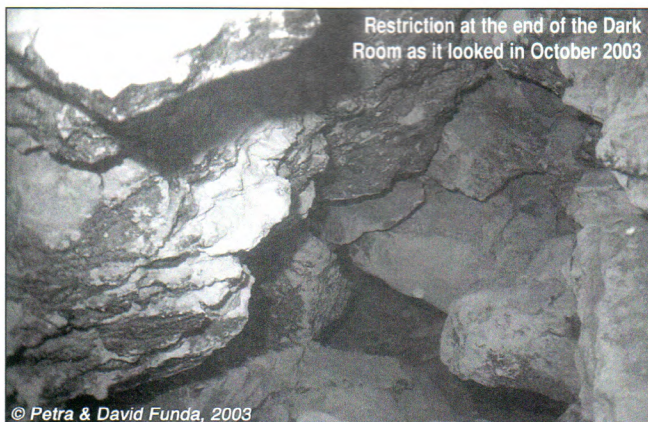


© Petra & David Funda, 2003

restriction, which opens up into a more spacious and straight passage - "Director's Tomb". We originally thought that this could be the deepest lead but after another restriction it quickly ends at 38m. There is however a visual connection back to the Bunyip's Tunnel, opposite the entrance to the "Bunyip's Den" (see below).

Close to the top of the small rockpile in the Bunyip's Tunnel, we came across a flat boulder with two prominent fossilized sea-urchin shells. They looked so intact that they made us feel the need to taste the water. Fresh - so they must be fossils! This was so amusing for us; but seriously, please take care when diving around "Sea Urchins Hill".

Following the tunnel downhill we explored two other rooms on the left as well as some fissures in the ceiling. The second room starts as a longer, very silty flattener from the deepest point of Bunyip's Tunnel, which opens into a low oval room (Bunyip's Den), the deepest point we found within the new passages. Its bottom was nicely covered with a thick layer of untouched silt and there is a huge lantern-like boulder hanging from the ceiling. Very low vis on the way back though, so take care there. The Surprise Tunnel continues from the crossing (our survey reference station Point B) to the right for another 30m before it ends at a vertical 'Chimney' choked with huge boulders with small windows here and there. It has



Restriction at the end of the Dark Room as it looked in October 2003

© Petra & David Funda, 2003

some beautiful features such as two prominent boulders, scalloping and a small side passage-room. Our frequent diving in Pines brought us to the attention of Peter Horne, who was looking for some volunteers for his revamped, detailed early-1990s SAUSS mapping project in Pines (as surprising as it sounds, there is no proper and complete map of Pines available at present). Of course we agreed, but suggested that we would prefer to start from the bottom up - later we explained why J.

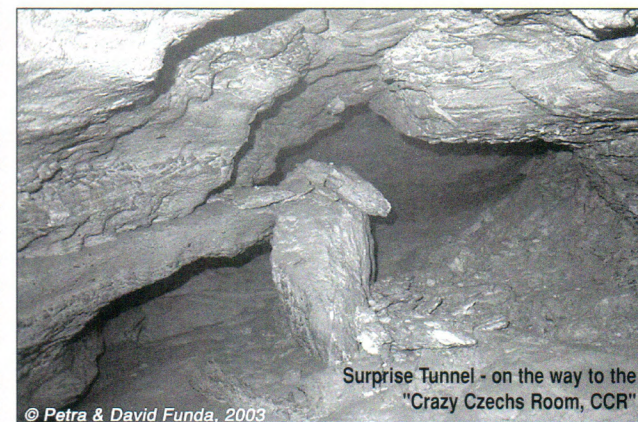
We got little bit distracted from diving Pines by our discovery in Nettle Cave (5L186) and then diving three new caves on the Nullarbor (SRGWA-CEGSA trip, October

2003), but we thought we were finished with exploring the new horizontal tunnels in Pines by November 2003. How wrong we were! On Saturday, November 1, 2003, yet ANOTHER big surprise!...

When venturing into new territory one always imagines what is going to be around the next corner. During our diving in Pines we had a dream of an "Inner Sanctum" there (probably inspired by our first Nullarbor trip); going up the 'Chimney' into an air chamber, taking a break and then diving back or walking out from Nettle Cave! A Joke? - well, close to the truth!

Two questions were coming back to haunt us all the time; how far are we from Nettle Cave (imagine a traverse!)?, and

where does the 'Chimney' go? The large boulders in the Chimney looked a bit scary and we weren't happy with the idea of attempting any gardening there. Maybe we can send a liftbag? But on that Saturday we went to have yet another closer look at the bottom of the Chimney again, where we found one window which looked OK for side mounts. We started at 32m and after getting through the first restriction we found that the Chimney opened up and kept going! The gaps among boulders were getting bigger and as we swam up we were in a state of disbelief - was this really happening?



Surprise Tunnel - on the way to the "Crazy Czechs Room, CCR"

© Petra & David Funda, 2003

"So it is not a joke, there really IS an Inner Sanctum in Pines"! was going through our heads. The passage opened fully, we were at -18m and two huge rocks were now blocking our view in front; there was a beautiful darkness behind them. We put our chins over the edge of a triangle rock and saw a big chamber!! We were in another cave!

We swam around at the bottom and at the ceiling which were formed by several layers of limestone coming from one side like scales. The shallowest point was only at 5

continued page 9

GAMBIER DIVE CENTRE

60 COMMERCIAL STREET WEST MOUNT GAMBIER S.A. 5290

PH : (08) 8723 4255 FAX : (08) 8723 4199

E-MAIL : GAMBIERDIVE@CORPRIT.NET

* CLEAN AIR FILLS * GEAR SALES * SPECIALISING IN CAVE EQUIPMENT

NOW STOCKING ASPIRING PRODUCTS !!!

(CAVING / CLIMBING / SAFETY EQUIPMENT)

OPEN WEDNESDAY TO MONDAY FROM 9AM

OPEN TILL 7PM SATURDAYS

DISCOUNT FOR C.D.A.A. MEMBERS

SOUTHERN DIVING CENTRE

1 Roy Terrace Christies Beach S.A. 5165

Ph: (08) 83821322 Fax: (08) 83821509

Email: soudiv@ozemail.com

~ Full service facility with oxygen cleaning ~

~ Air and Nitrox Fills ~ S.S.I. Training Facility ~

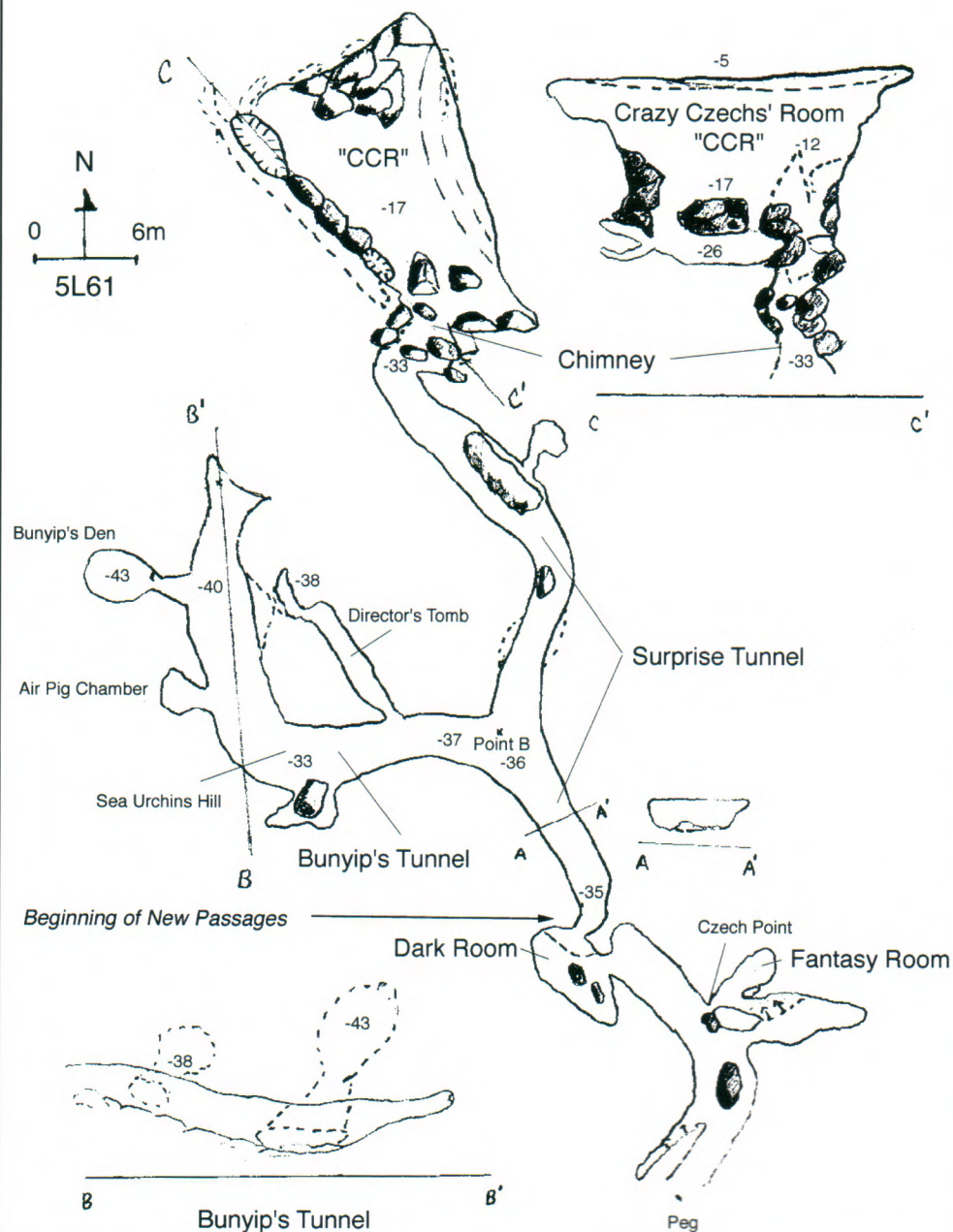
~ Excellent range of New and second hand dive equipment
from sports to tech diving

Oldest dive shop in Adelaide

10% discount for C.D.A.A. members!

New Passages in The Pines (5L61), Mt. Gambier, South Australia

Explored and surveyed by Petra Fundova & David Funda, 12.7.2003-10.1. 2004

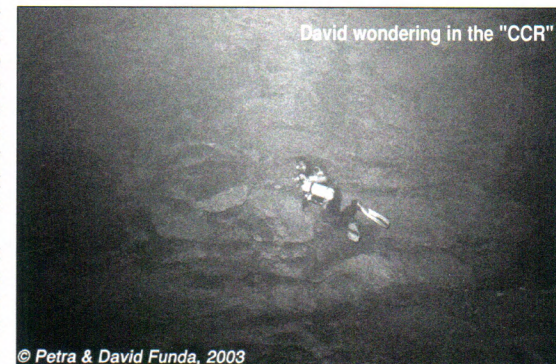


metres, and the bottom of the room was on average 17m. The chamber had big boulders on its northern side and a quite large opening leading to a 26m deep side tunnel which goes back to the room and is on the same side as the Chimney. We swam around this unbelievable room several times but then had to leave; two restrictions on our way back and a long deco to do. It was late when we sat together, speechless, at the entrance doline. It was a very special dive indeed.

Later that night we celebrated the discovery at Phil's concert in an Irish pub. We had to dive this room several times more to convince ourselves that it is there. It is actually about 14m long at the bottom but more than 20m across at the ceiling. We tried to come up with several suitable names but it seems that "Crazy Czechs' Room" as suggested by our friends stuck. It has a neat abbreviation "CCR" anyway.

In November 2003, Peter Horne and Phil Argy put us in touch with Ken Smith, the "Pinger Guru". Although we initially only talked over the phone, Ken was very enthusiastic about pinging in Pines and arranged two trips to the Mount after very short notice. We were so lucky meeting the right people at the right time! During two pinging weekends in November and January we placed pingers into various locations within the new passages. It was very exciting locating all the different features such as Dark Room, CCR and Bunyip's Tunnel on the surface. Another benefit of these two weekends was to see Peter "Puddles" Horne once again getting wet in the Back Passages and sharing our discovery underwater with Ken. More details about these two pinging weekends are nicely described in Ken's article.

So, how far are we now from Nettle Cave? Well, the end of the Crazy Czechs' Room is located on the other side of the road (Benara Hundred-Line Road), only about 65 metres from the SE extension of the Nettle Cave! We looked hard for any leads in all the new passages and the CCR, and we are quite confident that there are no easy ones to push further there. Similarly we checked the whole area below the pegs in the Back Passages. Maybe a dig on the opposite site of the Nettle doline would be the best answer? If more passage exists there it would bring divers much closer to the CCR than the present 65



© Petra & David Funda, 2003

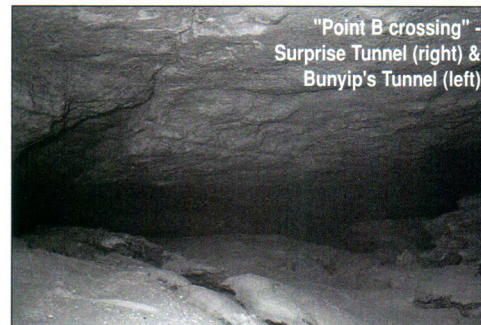
metres. The horizontal bedding plain in Pines is also at about 36-37m, which is where the Nettle Cave ends at present.

When diving the new passages we usually left a 12-litre deco Nitrox tank at 6 metres and swam down as fast as possible with side mounts and one travel/stage tank to the Dark Room. Then we left our travel tanks there and went into the new passages with our two full side-mounted cylinders. Because of the small restriction in Dark Room and others further in, we aimed to be in the Dark Room no later than 6 minutes into the dive. This gave us a nice long dive in the new passages - about a 90 minute dive time including 40-50 min deco (if done all on air). When something went slow or did not feel right we changed our plans and went mapping the Back Passages above the Dark Room. You can also go riding horses in the Dark Room, but that is another story!

During our last pinging weekend in January the restriction in the Dark Room suddenly "opened" quite substantially, making diving in the new passages and CCR much easier and safer. We still however found side-mounts to be better for diving there in general, and one would most likely need them when going through the Chimney to the CCR, or when exploring such places as the Bunyip's Den, Director's Tomb or other such features. We have not left any fixed lines in these new passages for a number of reasons, one of them being that it would take little bit of fun out of the diving there.

Exploring and mapping the new passages and the Crazy Czech's Room together with other discoveries kept us quite busy, so we have not pushed or checked in detail many other areas in Pines. There is a good chance for finding more there! We have had a great time cave diving in Australia; also thanks to the many friends we have met along the dark tunnels and holes. Hope to be back one day. Enjoy Pines - it is great fun!

We wish to thank Ken Smith (and his wife Linley) for the pinging explorations; Peter Horne for his continuous support when exploring caves wherever in Australia and his help with mapping; Peter Hein for a very useful surveying tape, and Trevor Wynnaiat, Phil Argy and Darren Walters for all their long-term support of our diving in the Mount.



A surprise in Pines

By Ken Smith - a follow up to David & Petra's article, also in this issue

It was late, ...11:30 at night*, when Peter Horne and I arrived at Pines to meet Petra and David Funda (aka the Crazy Czechs). Showing their characteristic enthusiasm they were already in their drysuits and their gear was laid out ready for use. It consisted of small sidemount tanks and stage tanks, all well set up for easy removal underwater. Small HID lights completed the set up. I gave them a quick briefing on how to place the pingers** and in a short time they disappeared below the surface.

I had heard a few weeks earlier that David and Petra had squeezed through a tight restriction in Pines and discovered a new section. Initially I was not very surprised as many people have squeezed into a crack in the rockpile to claim it as their own. However when Petra mentioned 80 metres of passage I took a lot more interest. We discussed the possibility of doing some surveying with the pingers. This was the reason for a quick one day trip to Mt Gambier (with no diving gear).

A few minutes after the Czechs departed Peter and I were stumbling over the remains of the tree felling in the darkness trying to locate the first pinger. This was to be placed in the "dark room" at a depth of about 34 metres. The signal was faint but could be heard satisfactorily through 40 metres of limestone and we located and pegged the spot. We then headed north to find the next pinger. As we crossed the main road the signal increased in strength. We found ourselves heading towards Nettle cave until we eventually found the pinger 100 metres from Pines and well over half way to Nettle Cave. The strong signal and field angle measurements showed that this pinger was in much shallower water.

In January I had the chance to meet David and Petra again. This time I made sure I had my diving gear. The plan was for each of us to carry a stage bottle down to the dark room where they would be left for our return. Then I would watch David tackling the restriction. If I felt comfortable I would go through next and Petra would follow. As I watched David enter the restriction, feet first, I saw a small rock to his right move slightly. I followed feet first and shortly afterwards found myself face to face with David in the narrow beginning of the new tunnel. A few seconds later Petra was with us and we swam off into clear water.

Diving a cave you have not seen before is always enjoyable. However as I followed David through this passage my feeling of delight was very strong. The words "This is really

very surprising" kept running through my head. Who would have thought that a familiar cave like Pines could have produced such a surprise? The passage deepened to 40 metres and it struck me that the experience was very much like diving Tank Cave, but with narcosis included. Soon the passage choked off and after placing a pinger, and taking a brief look at a side chamber, we turned back. Returning through the restriction presented no problems as there are no obvious line traps, and going up takes you straight out. Half way through I saw a rock that I had last seen under David's right elbow as he went in. I carefully moved it to one side and I was back in the dark room a few seconds later.

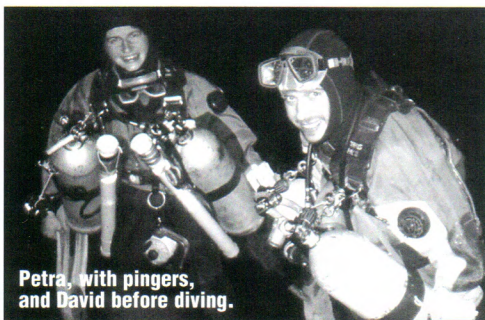
The next day we were to visit another part of the new section. Leaving our stages in the Dark Room we swam straight through the restriction barely touching the sides. The removal of David's rock had certainly made a difference. This time we turned right at the first junction and, after a couple of turns, the tunnel appeared to end in a rockpile. However Petra wasn't deterred and swam up through a round restriction amongst the rocks. I followed closely behind her, with David behind me. We passed a second restriction which was more like a slot, ideal for side mounts. The passage became larger and we ascended into blue water. We rose past two large rocks and the full extent of the chamber came into view. It has a domed roof peaking at 5 metres water depth and is about 20 metres across. The floor consists of large boulders at a depth of about 17 metres. We swam around the chamber and David showed me where the pinger was placed on the previous trip. I saw a survey tag naming the chamber "Petra's Dome". However another name seems to have stuck and I think the chamber will always be known as the "CCR", the Crazy Czech's Room.

David and Petra Funda will be returning to the Czech Republic at the end of February. The Czech Republic is a beautiful country with some very nice caves already. No doubt it will become more like Swiss cheese as the "Crazy Czechs" continue their explorations in their home country. I think we all appreciate the effort they have made here and wish them well for the future! Perhaps they will visit us again one day?

NOTES

* The terms of the ForestSA permit do not permit diving outside daylight hours. However, permission to dive at night may be granted if requested.

** The pingers are small submersible radiolocation transmitters



Petra, with pingers, and David before diving.

"High Standards"

Hi All...

Doesn't time slip away. We still have lots of items outstanding. I am still waiting replies to my questions to all in regards to the twin tank issue. Should we use twin tanks or single tanks in the Cavern Sinkhole course? I have run a mini survey for a period of three months so far I have had two replies from Instructors. One in favor of twin tanks .One in favor of singles. Duce!!

We have our Penetration course running over the Easter weekend. Barrie Heard is the Penetration Course Co- coordinator. You can contact Barrie on the CDAA web page. To those of you that are attending good luck. I hope that you are all successful. I will be staffing this program with Barrie. .

Currently we have several new instructors in the training arena, in Victoria and possibly other states. Wonderful news for Penetration divers. A new passage in Pines. I would like to highlight the new passage in Pines. At no time will it be tolerated to have Cave rated divers in this Passage. As Standards Director I must stipulate that very strong action will be taken should anyone who is not Penetration rated and is in this area of the cave. I believe it will be signed at depth. Please respect the dual rating of this cave.

Thanks for listening

Regards, Max B Marriott, CDAA Standards Director

BELLUM HOTEL

CDAA members \$35.00 per room per night.

Each room has its own bathroom plus one double and one single bunk bed.

Continental breakfast \$5.00 extra per head.

Extensive dinner menu which also caters for vegetarians.

Contact Simon or Lisa:-

08 87385269

or email bellumhotel@internode.on.net

And if you don't know where the Bellum Hotel is, it's that pub on the road to Port McDonnell just next to the turn off to Little Blue!

MEMBERSHIP RENEWALS ARE DUE SOON...

*Turn to pages 18 & 19 of this issue,
fill in the membership form and
return promptly.*

***Your membership gives you benefits...
Don't take them for granted!***



Aspiring Products now in Australia...

**Caving, Cave Diving, Climbing,
Safety and Rescue Equipment**

Email:- tonymorris@optusnet.com.au

Phone:- 0407 807 076



\$ (inc GST)	Product	Application
\$99.95	Speleo	Caving sit harness, with maillon, suited to SRT.
\$84.95	Triad	Basic sit harness.
\$104.95	Shaft Access pack	Includes the Triad, a screwlock karabiner and sling saving you \$15.00 and preserving sanity of the Guides.
\$159.95	15m Ladder	6m, 9m and custom lengths also available.
\$p.o.a	Hardware	SRT Kits, pulleys, ascenders, descenders karabiners etc. for recreational or commercial use.

(free low-priority delivery in Melbourne/Mt Gambier, elsewhere dependent on location & urgency)

*All other access hardware for cave diving, caving, climbing, safety and rescue.
(distributed by Competitive Advantage Technologies Pty Ltd)*

In the guts of Hades... the discovery of Tewi Cave

A new submarine cave in Manus, Admiralty Islands / Papua New Guinea. Pics and text by Pierre Constant

"After World War II, the Australian navy used to come here for picnic, you know, have a swim in the pool, enjoy the cool shade of the cliff. We call this place: "Wash Wash Meri"..."

Two degrees south of the equator, in the Admiralty Islands of Papua New Guinea, the jungle of Los Negros Island is very far from civilization. During the Pacific war, Americans had bloody fighting with the Japanese who had occupied Manus for a couple of years, before they were dislodged in 1944.

I am standing at the base of an impressive limestone wall 10-15 metres high, which runs roughly from north east to south west along the Tewi lagoon. The latter is connected to Seeadler Harbour and the Pacific ocean, on the north coast of Los Negros. On the waterfront, this is all mangrove area. Nearby is a bamboo grove where, according to the locals, a big female crocodile dwells. Not the kind of encounter that I am looking forward to face.

I had been once to "Wash Wash Meri" in July or August 1999. Attracted by the turquoise blue colour of the crystal clear water, I went for a swim and did some snorkelling. A slope of sediments was gliding down under the base of the cliff. I dove down on one breath to about 10 metres, but could not see the end of it. Under the surface, I saw some fishes: the orbicular cardinalfish, some mangrove snappers, "Lutjanus argentimaculatus" and some black and white banded archer fish with a yellow tail.

One morning of December, I made up my mind to have a tank dive. I drove my minibus to the village nearby and met the old man named Paul. He was sitting under his house, in an old wretched, antique looking armchair, peacefully smoking his pipe. With due respect to authority, I assumed he was a "bigman". Introducing myself and explaining my case, I basically asked for the permission to dive in the pool. He was curious and open minded. Caressing his white beard and adjusting his spectacles, he

stared at me for a while. "Nobody has ever scuba dived Wash Wash Meri. You are the first white man with such a funny idea", he smiled. "By the way, we have a legend about this place...", he started.

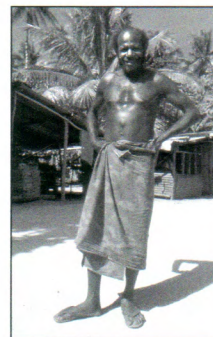
This is the story of Inimei and Inipoon. A long time ago, about two sisters that were actually mermaids, half human, half fish. They lived in the lagoon, but one day unfortunately, they were caught by fishermen outside the lagoon.



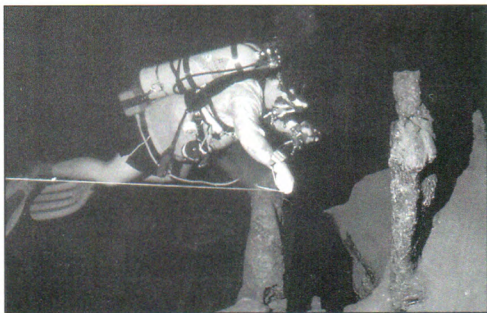
One was killed for food, while the other, Inipoon, escaped after marrying the leader of the fishermen. She got pregnant with child and returned to the lagoon, where it is believed they both originated. Eventually, Inipoon, the youngest of the two sisters, landed and walked across to the pool where she was hiding. This is where she disappeared forever.

With the blessing of Paul, the bigman, off I went to the pool with a joyful party of local boys. Not too sure what to expect down there, I told my wife to stay behind, until I found out a bit more. I had a small Scubapro torch, all right, but did not have a reel. Risky business. I dove down cautiously, following the left side of the wall. The floor was soon reached at the base of the slope at a depth of 17 metres. Any unfortunate contact of my fins with the silt would automatically translate into a dark cloud of dust, that would obstruct visibility behind me conspicuously. I went as far as I could before losing visual contact with the surface light. Then, there was a bend to the left. Another little slope had brought the depth of the tunnel to 21 metres. I returned to the safety of the exit after completing 33 minutes. I discovered a pile of oyster shells and other shell debris of marine bivalves on a side slope plunging down to 25m. Some translucent fresh water shrimps caught my attention on the sediment. Well, I knew for sure that this was not going to be my last dive in "Tewi cave". Something was still hidden in the darkness.

On subsequent dives, I reached a dive time of 57 minutes, discovered a peculiar marine life at the entrance funnel: a cowrie shell digging through the sediment, white bryozoans, sponges, translucent ascidians. In the depth of the cave, small red banded cave shrimps "Rhynchocinetes hiatti", were skimming the bottom, hopping around in circles if the torch beam was on them. I also



continued page 16



tried to enter the third chamber, through the side crack at the end of the first chamber, but each time I silted in and was afraid to venture any further down. "Very wise indeed...", confessed Tony Davis, an Australian cave diver, when I spoke to him on the phone. Realistically, I was not trained as a cave diver and at some stage I had to accept my limitations, my technical lack of knowledge and poor equipment. An idea came to my mind. Let's email some of these Australian cave divers, who I had met last year in South Australia, when I was preparing a report on the fresh water springs of Mt Gambier. I recalled with a smile, that I had not been allowed to dive Piccaninnie Ponds, because: "I was not certified member of the CDAA".

A very frustrating feeling. "That is the law...", I was told abruptly. Never mind. Maybe they would take me seriously now. The morning after I had sent my emails, one Australian cave diver answered in a hurry. This was Tony Davis. I had met him at Piccaninnie Ponds, once before sunset, when he was about to hop in for a dive. My story got him seriously interested. He was indeed looking for some new stuff and had explored some new cave system in Vanuatu.

Tony advised that he would come for 6 days in the first week of April, together with a friend, Gary. They would map the cave, put guidelines and shoot a video as well. This was all exciting. When the two cave divers arrived from Melbourne, they had a 100kg of luggage each. I took them right away uphill and downhill to the lagoon. They realized that it was no cold sweat. "How do you expect us to do this everyday with twin tanks and all our dive gear?", they wondered, "we'd better need some porters...". No worries.

I got some fellows from the nearby village to assist us the next morning, under the supervision of Simon, my trust man. The expedition was set up like a 19th century exploration in the jungle of New Guinea. A single line of 10 men, crawling up in silence through the lush vegetation, like a slow caterpillar and stepping over jagged limestone. Some carried yellow tanks, others dive bags with lamps and heavy batteries, others cameras and bush knives. The day before, I had mentioned to Simon that it was no easy feat to climb over these two big dead logs, laying across the trail. "Just put a few wooden steps in front, that will do", I advised. Well, this morning I was surprised for good. He had chopped a large passage through the two logs, with a simple axe. "It took me only 2 and a half hours work...", he said modestly.

Tony and Gary were rightly impressed by the entrance pool, at the base of the 20 metres limestone wall. This time, we entered as 4 divers. Tony holding the reel, drew the line to where I had ventured with a single tank, Gary took some pictures. On the fol-

lowing day, they were both on twin tanks and went further in beyond, in a long straight tunnel, to an area crested with stalagmites, which I call: 'The Chandelier'. On the right side of it, a big hole was going into the deep. The tunnel would continue up into another chamber, much narrower, where freshwater and saltwater would mix. The visibility changed drastically, and it turned rapidly blur. At this stage, Tony caught my attention frantically, with his lamp in round circles and signaled me to return. The message was clear. I had gone too far on a single tank. Fair enough. I made my retreat along the guideline. Back through the long corridor, I found Chris inspecting an old rusty 20 gallons Japanese drum, laying on its side. Nearby was a pile of debris and small rocks, were a few bones and the skull of a mammal. Maybe a cuscus. These must have fallen from a hole in the roof, I thought. The pincers of a large coconut crab had joined the collection and were also part of the bounty. Above my head, the ceiling was very high. At a depth of only 8 metres, I had not reached it yet and it was still going further up in a mix of fresh and murky water.

In the following days, numbered arrows were fixed onto the guideline, showing distance to the exit. Little yellow markers were attached wherever the line was changing direction. Sixteen in total. "Fishers" or cracks in the wall were noticed by Gary, as well as solution tubes, but no branching tunnels leading elsewhere. After four days, Tony and Gary concluded that their exploration was over. They had seen the end of it in a small chamber, with a single 1m50 high stalagmite and straw like stalactites hanging from the wall. "A very nice room indeed", Gary said. "Only 8 metres deep, very silty, with almost zero visibility". Tony tied the end of the line and estimated a total distance of 300m. "It could even be 350m, if we made a mistake...", he reckoned. Tony had promised me a map of the cave when this was all over....well, I am still waiting for it.

Graphically, the sketch of the extended guideline realized afterwards, had the design of a fishing hook. "Tewi Cave" was first heading south west, then south, at last turning east and ending due north. "There must be other caves in the area", remarked Tony. For sure there are. Quite a few dry ones that served as refuge for locals and even for Japanese soldiers during WWII. "How about an underground river flowing in the mountains of central Manus?", I frowned, "with human skulls and bones from the cannibal times...". Spooky?

Footnote:

Eventually Pierre became a cave diver in March 2003, following a Cavern/Sinkhole course in Mt Gambier, with Linda Claridge and Gary Barclay.



Recent experiences around Mt Gambier: Learning to be a cavern and sinkhole diver

A reflection of a dive store owner / dive instructor who does his cavern/sinkhole course. By Chris Pratt, Vision Divers.

It was the Australia Day week-end and what better way to spend it than on a Cave Diving Association of Australia (CDAA) Cavern/Sinkhole Diver Course. So on Friday Kath, Nathan and Chris from Vision Divers set off on the drive to Mt Gambier ready to start the course bright and early on Saturday morning. We arrived at the Jubilee Holiday Park which was to be our base for the next few days and what an excellent value facility it turned out to be.

On Saturday morning we turned up at the classroom to meet our instructor Linda, who was being assisted by Steve, an instructor in training. We also met the fourth participant in the course who introduced herself as Bun, that's right Bun – well she was from England after all and didn't you know Bun is short for Elizabeth! Bun had read about the course in a UK dive magazine and had decided it was worth participating.

Much of the morning was spent on theory and learning about the background of the CDAA and cavern and sinkhole diving. It was fun and informative at the same time with interesting teaching techniques on display and bits of practical work thrown in. We quickly worked out that we were in good hands, with Linda's extensive experience in all types of diving. We had a bonus as well in the shape form Steve who although was in training as an instructor, also had wide range of diving experiences. So after we had learned to tell the differences between caverns, sinkholes and caves, recognise the limits of our training, and understand the sensitivities in gaining access to many sinkholes on private land we made our own tethers to attach ourselves to the lines. And Linda, you really do need to do something about the colour of these tethers – shocking pink – okay we won't lose them in the murky waters and they turn sort of purple underwater – but we still have to be seen with them above water!

As the morning moved on the real (or was it reel) excitement started – we were let loose with our reels to practise. We had already learned in the classroom about primary tie offs, secondary tie offs, line placement and wraps as well as buddy signals both with hand and tactile in low visibility. So we left the classroom, headed for a patch of grass and started at the wheelie bin, with our primary tie off for the line, then progressed to the fence for a secondary tie off and from there ran our lines out using wraps and tie offs on growing trees, old stumps, parts of fences and whatever else would take a line. We moved around in our buddy pairs signalling to each other – now was that one or two squeezes on my elbow – and anyway is it one or is it two squeezes that means "okay"?

Ah it was one squeeze and that really means "stop". Well we probably looked pretty silly to the naïve observer tying the wheelie bin to the fence and playing at trams running along the lines secured by our tethers. We might even have been mistaken for some management group in training undertaking some bonding exercise! But did we care? Not at all we were having loads of fun and we were learn-

AAAT 3½ Star



AVALON MOTEL

"The quiet motel off the highway"

LOCATED IN THE CITY CENTRE

www.avalonmotel.com.au

- Very quiet and central location
- Free Austar Channels
- Walk to shops, cinema, restaurants
- 21 Ground Floor Units
- Family Rooms
- 4 Bedroom Apartment (sleeps 8)
- Indoor Solar Heated Swimming Pool
- Enclosed Free Guest BBQ
- Guest Laundry
- Interconnecting Room
- Fully Refurbished
- Microwave Ovens
- Ironing board and Iron
- Hairdryers
- Toasters
- Tea & Coffee facilities
- Air conditioning & heating
- Fully refurbished
- Non smoking rooms available
- Internet Kiosk

Hosts - Grant & Tracy McKinnon

Phone: (08) 8725 7200

Fax: (08) 8725 9491

Email: avalonmotel@bigpond.com.au
92 Gray Street, Mount Gambier 5290

ing lots of things at the same time.

A quick lunch on the way saw us reach Gouldens, a well known training cavern in the early afternoon. We all knew it was designated a cavern because we had listened to the definitions in the morning (and we were also able to look it up in the guidebook we had been given). So after an excellent briefing accompanied by a complete new range of hand and arm waving signals as we fought off all the flies, we donned our gear and one giant stride later were floating amongst the thick algae that had formed on the surface. Still the flies were there – we started to wonder if we would ever get away from them. Off we went under the water with our reels, leaving the flies to wait for us when we surfaced. But hey what's this – where is that wheelee bin and the fence? What's this line doing floating around if I leave it loose? And there was none of this silt stuff back on the grass patch. Had we been misled with all that practice we had? We had to rely on old tree stumps, bits of rocks and whatever else provided a good tie off point. Off we headed into the gloomy water setting out line and practising our skills – tie offs, buddy communication and so on.

Across the four days of the course, we completed a total of seven dives developing skills and practising what we had learned. We fed out line, used tie offs, placements and wraps, practiced different fin kicks, found our way in the silt along the line without a mask, and tested our skills at around 35-40 metres just to make sure we knew what happened if narcosis tapped us on the shoulder. And Linda, with Steve's gleeful assistance, made sure we were put through our paces. No wonder there was that knowing smile on her face on the surface before the descent. What was in store for us? Just when you thought you might be getting the hang of things, suddenly on a signal from Linda, your buddy would be out of air and come racing up to you grabbing the regulator from your mouth. No problem at all. I had an occy after all. Well sometimes no problem at all – but then your mask got pulled off your face, grabbed from behind just when you needed it most. And with your buddy hanging off your reg, and holding your elbow to signal to you, as a pair, you had to get back to the exit point without masks, following the reel winding it in as you went, or practising abandoning it and simply following the line. Now I understand why reference is made to stress tests along the way. No panic, just stay calm in the murky silty water and trust the line to get you back. Strange as it may seem, I found following a line with my eyes completely shut, even though you can open them if you want, a very rewarding experience. It was really good to know that if you end up not being able to see anything at all, you can still get back to the exit point. And Linda always provided that extra bit of incentive for getting back. She would undo a zip in her drysuit at the end of the dive and pull out redskin lollies as our reward. So we just knew we were doing okay as long as the redskin lollies kept appearing.

Another great thing about this course, is that you learn lots of other skills including how to access and exit the less diver friendly sinkholes that have completely vertical sides all round. So we spent a few hours on the other side of Little Blue, a sinkhole that does have diver friendly access on one side, practising abseiling into the water and climbing a wire ladder to get out. Of course, we did this without tanks and bcds, which when diving rather than practising are



lowered into the water and raised separately at the end.. When might we use these land, or is it mid-air, based skills? On the last day Linda made sure we got some appreciation of this. On our way to the world famous Piccaninnie Ponds, for our last dive, we stopped off at Hells Hole, and no better name could be given to this site. It is a gaping hole in the ground with completely vertical walls all round and a 30 metre drop to the water. We looked in awe at it but decided it was a must for a return visit sometime in the future once we had practiced our climbing skills some more. It set a challenge that was difficult to ignore. And leaving Hells Hole for another day, took us on to "Pics" for our last dive. For some this might be the motivation to complete the entire course. It is as everyone who has done it agrees, a truly spectacular dive. The water is crystal clear and once you have negotiated some reeds on the surface you come across this vertical drop down much deeper than divers are allowed to go. The clear water is misleading and before you know it, you are at the limit for divers of 36.5metres, with no real appreciation of being at that depth other than your depth gauge and the sign that tells you. It was a great way to finish the course.

Over a final meal before heading on our separate ways, we all agreed that it had been a fantastic course and that we had learned a lot. We had been given many challenges with some being designed to stretch us to the limit to see how we coped. But we had also had lots of fun. Completion of the course opens up a whole range of new dive opportunities that, however experienced in ocean diving someone might be, are still understandably not accessible to them. It also leads on to the possibility of completing cave and penetration courses. And, there is no doubt, that even if you never went near a sinkhole or cavern again which in itself would be a great shame, you end up a much better diver generally both with more confidence and more awareness of your abilities and limits. Linda certainly worked us hard and worked hard herself to provide a great course with lots of fun times thrown in. And on day three of the course, Steve completed all requirements to become an instructor in his own right. He certainly deserved this and will make a great addition to the growing number of professional instructors who are part of CDAA. The crew from Vision Divers had a great time and also met up with our new friend Bun, who was terrific company and whom we wish well for her dive travels around Australia and elsewhere.

MEMBERSHIP RENEWAL INSTRUCTIONS

- 1) Please print and fill out the Membership Application Form
- 2) **Enclose a stamped self-addressed envelope**
- 3) **Include 2 photographs** of passport quality and please write your name on the back of each photo or email a good quality jpeg to records@cavedivers.com.au
- 4) Enclose your cheque for \$70 per year PAID (including backfees - \$45/year to a max of 5 years)
You can also pay by credit card or by electronic transfer.
- 5) If you wish to have non-active membership, PAY \$35/year.
You can keep your membership going, receive copies of Guidelines, but cannot dive with such a membership.
- 6) **After August 31st any unpaid renewals will incur a \$45 late fee.**
- 7) Anyone wishing to add a Nitrox endoresment will need to include a photocopy of their certification and pay a once only processing fee of \$10.



Please mail to:
Records Officer - P.O. BOX 4336,
Langwarrin 3910 VIC.

(INCORPORATED IN SOUTH AUSTRALIA)

CDA # _____

PLEASE
ATTACH
2 PHOTOS
OR EMAIL
A JPEG

(w) (____) _____ Email: _____

Signed: _____

- ☐ I enclose **\$70** being CDAA Membership for 2004/2005.
- ☐ I enclose **\$35/yr** being for non active membership (no diving) for 2004/2005.
- ☐ I enclose **\$140** being CDAA Membership for 2004/2006.
- ☐ I enclose **\$210** being CDAA Membership for 2004/2007.
- ☐ I enclose **\$45/yr** being for backfees (max 5 yrs)
- ☐ I enclose my cheque / money order for \$ _____
- ☐ I have electronically transfered \$ _____ on date / /04 to account:

Expiry Date: _____ Signature: _____

Card:

NATIONAL DIRECTORS REPORT

I hope this issue finds everyone well and still diving. I run into ex members all the time that made the mistake of letting their membership expire and regret it. The Directors listened to these concerns and now with our optional membership status, there is no reason to let your membership go. Look at the latest news, new site openings, exploration has extended sites, new mapping projects, new facilities at sites – I can't remember when so much was happening at one time.

The Association has an ongoing concern with Insurance and we are advised that there is an outstanding case against us and yet we know nothing about it. Another Training agency has been consulted about this case and would seem to be acting for the complainant against ourselves and a member (?). As the Scorpion said to the frog – "It's just my nature!" We are yet to be advised by any current or ex-member that there is a problem so we can do little about it to either defend the person or ourselves. In the mean time the particular agency, I'm told, is not going to cover their Instructors as "Additional Insured" on their policies and this will roll on I imagine to everyone insured with that Insurer. If Instructors or Guides do not have a policy that states that the CDAA is an "Additional Insured" then they can not act for the Association. As I understand it, one particular policy does not require this wording and is OK.

The position as a Director of this Association comes with a load of responsibility and it's what you accept when you take the job. What concerns me the most is the stand that Directors are required to make, on many points that sometimes they don't agree with, but because of unity they are forced to "toe a line" as they say. I know that this effects all of our Directors, we each have our own ideas and what we want to achieve and are constantly frustrated by each others opinion. Eventually something comes down to a vote and a majority (that's four) decides it. Our Constitution protects us from ourselves and although things are slow they are usually done correctly. The clashes I have had with other Directors pains me but I realise that it comes with the territory. What hurts more is that I often find myself up against members who I think "see through rose coloured glasses" and fail to see the big picture. What's important to them is just not on the priority list for others. I'm also sure that I make mistakes as well and what seems so clear to others isn't to me. Criticism or ideas from members are welcome as long as they are not abusive or insulting. Emails are the hardest to write

because they often sound aggressive and confrontational. I can't change these things just advise you that if you want a "fair go" then it's a good idea to word it correctly. When sending anything to a Director for attention, remember they each have their own life to lead apart from the CDAA's and you may be way down the line in priority, so don't start on the wrong foot. On that note – It's time to think about the two positions that are coming up soon, that's Business Director and Standards Director. Not that we want to lose Richard or Max but who knows what will happen.

A lot of talk has gone on about the new Regulation concerning Decompression Diving, Mixed gas and Rebreathers. Stated simply it's just a matter of picking up the Standards Australia document and reading it. Follow the points and there's no problem! No, it's just not that easy. It's a matter of interpretation and lately we have been hung up on what constitutes a Manufacturer and what doesn't. I do not wish to set myself up as an "expert" although I did work on the Standards Australia advisory sub committee. Richard Taylor and Barrie Heard would know more about interpretation and I'm sure that they can do so completely unbiased as to the effect on their own Training agency Standards (A little tongue in cheek here.) A letter or email to Standards asking for an interpretation could solve your own problems I think better than anyone else especially that of an "arm chair lawyer's" There has been argument recently about the rebreather dive in The Shaft. Was it as per the Standard? Were they using non Manufacturer specification equipment? Did they follow the Australian Standard? I can tell you that there was a qualified Guide/Supervisor a dive plan lodged, qualified divers dived and checks, plans etc. adhered to. Now whether we want to argue about who the manufacturer, was or is now, that's debatable so I don't know if we can solve that. Let's look at the problem... Do you use a regulator to Manufacturers specifications? That means you are willing to go to court (worse case scenario here) and be sure that a Manufacturer or their agent will say that your equipment is as per "Manufacturers Specifications". You of course use the same brand octopus, same gauge, same computer etc. Or do you expect a Manufacturer to say that they will guarantee the performance and quality of a rival brand? So now that we have solved that one let's face it none of us are up to Manufacturers Specifications, one way or another we will not meet the

service requirements, branding, care or use that they specify. But does that make us guilty and if so of what? Who is the Manufacturer? Maybe it's you, having purchased diving parts eg. First stage, longer hose, second stage, gauges etc. now you put it together it breathes like a dream and why should there be a problem? What about the jets in your rebreather, what about the sorb? Hey, what about the oil in your compressor, is it as per manufacturers recommendations? Because you can bet if they didn't sell it to you, it's not! The mind boggles, do we really want to get into this so deeply? A lot say, "Who cares!" because they are only diving on air and "To hell, with the regs and politics!" Now we get back to the nitty gritty, the Directors do care - have to care! John Vanderleest has taken on a project to help interpret the Standard/Regulation for our Guides in Tank Cave. The problem is will this be correct? Always the best interpretation comes from the people who wrote it and I suggest if there's something that you're not clear on write to Standards Australia, quote the document and numbers where it is unclear and get a ruling. This is not to put down John and his work, it's just an observation.

Remember when diving was free? We've all heard it,

"Why should I pay to join the CDAA, why should I be examined when I'm so good and so experienced?" Whaddya mean I gotta pay to go into that hole?" A lot of us remember the "old days" (don't you love that saying, my old days were someone's new days and vice versa) when diving was free and I suppose that's why some have dropped out of cave diving and gone back to the sea. And then along came the "pay to dive" on the Great Barrier Reef followed quickly by Parks Victoria now charging divers who wish to enter THEIR Park (yep, the one they voted for) the fact that the two most popular dive sites are in that Park is going to have a tremendous effect on diving in this State and just wait, it'll spread throughout Australia! I suppose one of two things will happen, either some will give up altogether or they'll just get used to it and go back to caves. It seems that if you want to dive you're just going to have to pay! Think about it – wouldn't you pay to get into some sites, maybe you are already, who knows what the future will bring, but if I were you I'd get ready for changes.

Regards,
Warrick McDonald.

UNDERWATER VIDEO SYSTEM FOR SALE...

*Fantastic
Mini DV and
Lighting for
Cave Diving
videos!*



This system has been used by long-time underwater photographer, David Bryant (designer of Guidelines) and has filmed most of Port Phillip Bay and beyond. Much of the footage has made it to TV, in relation to the Marine Parks for Victoria, so you know what this camera produces is of a very high quality!

A fantastic COMPACT video system that captures some amazing quality footage. The System is complete with halogen lighting, high quality sealed battery units, in fact this system is hard to beat, even with today's current technology. Only 6 years old, still current Mini DV and just been fully serviced and ready to go.

Feel free to take it for a test dive if you wish*... Just call me if you're interested.

Dave Bryant - (03) 59 863 104. E: seapics@alphalink.com.au

*genuine buyers only please!

Hell's Hole - my experience!

Diver rescued at Hells Hole was the first article I read in Guidelines (Sept 02) after I had completed my Cavern and Sinkhole course and funnily enough it didn't really inspire me to want to put it at the top of my list of sites to dive. For those that haven't read the article, it's the story of 2 experienced divers and the problems that they had when one of them wasn't able to climb out after the dive. In the end the SES had to be called in to help him out.

A couple of months later on our way back from a dive in Pics, we thought we might as well and go and have a look at Hells just to see what it looked like. We found the turn off the main road OK but it took us a while to find the actual site since the second sign post had been removed (and probably thrown into the bottom of the sinkhole judging by all the other road signs in there). Standing at the end of the gantry and looking down didn't do anything to change my mind that it was a dive worth doing. It was certainly along way down (to far for a giant stride), lots of rubbish and tree branches on the water and I knew it would be tougher getting out than getting in. As someone who enjoys nice relaxing diving, this looked all too much like hard work.

It wasn't until early this year that I actually thought seriously about doing it. Myself and a couple of dive buddies were organising one of our trips to the Mount when a non CDAA diving friend said he'd be interested in coming down at the same time and diving Ewens. This friend happens to be a trained and qualified vertical rescuer as well as someone who does abseiling as part of his daily job so he had all the necessary ropes, kara-

biners, pullys, prusicks, harnesses and mechanical advantage tools to raise the Titanic. Getting me in and out of the water should be a piece of cake for him and even better, require very little effort on my part. He was more than happy to

help out and be our surface support. I then started to get a little bit excited about diving this site.

First thing was to organise the necessary permits. A quick email to ForestrySA got us booked in under the proviso that we have somebody with us that has dived the site before. Bugger! We're the only CDAA divers at our local dive store and didn't know any others who'd dived it. How are you supposed to get experience if you can't dive it because you're not experienced!

A phone call to the Rob Brennan, the CDAA site director sorted it out. After explaining to him our dive plan and the type of surface support we had he suggested calling the Forestry rep and try and persuade him to issue the permit on that basis, but that he could obviously still say no. Luckily for us the rep said yes so we were all set to go.

The day arrives and we get to the site nice and early. The support guy (Phil) starts setting up his ropes and pulleys as myself and my dive buddy Andrew start gearing up. Since Andrew's done this abseiling stuff before he hooks in first and gets lowered down, next it's our dive gear and then me. Standing on the edge of the gantry I couldn't help but wish that I'd gone behind the trees earlier to get rid of the nerves but I hook my harness onto the rope and then I'm been gently lowered into the water.

By Nigel Longmire



INSTRUCTOR RENEWALS WERE DUE ON 31st DECEMBER 2003. AVOID DELAYS IN PROCESSING YOUR REQUESTS FOR MATERIALS BY SENDING YOUR RENEWAL ASAP. SEE Pg. 24

From Pierre Constant's article



WANTED



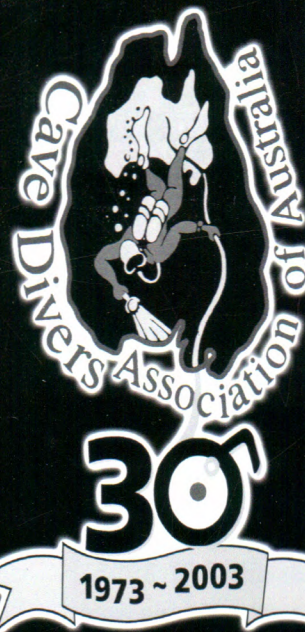
ARTICLES 4 GUIDELINES

IF SIGHTED PLEASE SEND IMMEDIATELY, TOGETHER WITH ANY PICTURES TO:

**The Editor, David Bryant
P.O. Box 2198, Rosebud VIC 3939.**

REWARD

An even better Guidelines for everyone.



CDAA 30TH ANNIVERSARY CLOTHING

**T Shirts • 3 x Colours; White, Black & Maroon
4 sizes M,L,XL & XXL - Only \$25.00**

**Polo Shirts • 2 x colours
Grey with black trim & Black with red trim
Also 4 sizes - Only \$35.00**

There are only a limited number of each of these so get in quick!

Order via the form in this issue.

*While you're waiting for you next
Issue of Guidelines. keep up to
date with all the latest on the
CDAA website...*

www.cavedivers.com.au

- course dates • photo gallery
- access protocols
- classifieds - free to members
- on-line dive bookings
- latest news

IF YOU WANT TO KEEP UP WITH THE LATEST NEWS,
REGISTER YOUR EMAIL ADDRESS
ON-LINE! DON'T FORGET THE WEB PAGE...

NOTICE FOR INSTRUCTORS

Procedure for ordering student packs:

1. Check you are insured & financial.
2. Send order & cheque or by phone/credit card.
3. Allow 14 days from when the order is received - so allow plenty of time.
4. Student kits cannot be returned.
5. Instructors must be active.
6. Please do not pass my number on to dive shops - you should deal with them not me.

• INSTRUCTOR RENEWALS •

**INSTRUCTOR RENEWALS WERE DUE ON 31st DECEMBER 2003.
AVOID DELAYS IN PROCESSING YOUR REQUESTS FOR
MATERIALS BY SENDING YOUR RENEWAL ASAP.**

Instructor Renewals - PO Box 292, Calwell ACT 2905

Heike Apps, Instructor Materials Officer - 02 6291 0566 (A.H.)
Email: heike.apps@ga.gov.au

CLASSIFIEDS

FOR SALE

P-VALVES - \$70.00

\$80.00 with non-kink flexible tubing and cap

Phone Gary or Linda on 03 5565 8793 or email: garinda@tpgi.com.au

FOR SALE

- 1x Amphibico MV1 Digital Video Camera and Housing with Wide Angle Dome Port
 - 2x Ikelite Video lights with batteries, tray and arms
Cost New \$9000.00 in excellent condition - Bargain for \$3500.00 ono
 - 1x DUI CF200 Dry Suit (red and black) with pee valve fitted 4yrs old
to suit 5-6 ft 85kg in Excellent Condition - \$2000.00 ono
 - 1x Eco Diver Neoprene Dry Suit in Excellent Condition to suit 5-6ft, 100kg - \$450.00 ono
 - 1x Ocean Dry Neoprene Dry Suit New only used once to suit 5-6ft 85kg - \$650.00 ono
 - 1x Ocean Graphics Rechargeable Torch - \$490.00 ono
- Phone Peter Costello 0417494771 or a/h (08) 85524878

FOR SALE

**Drager Dolphin Rebreather with carry case, Drager bail-out
system and five litre tanks. This unit has done two dives on one
day so it as new! \$4,500.00 Contact Jane Bowman 0407 566 455**

GUIDELINES DEADLINES

*If you would like to contribute to Guidelines in 2004, you should note the
following deadlines for submission of materials:*

Deadlines for publication:

- 20th May for June 2004 • 20th August for September 2004 •

CDAА SITE ACCESS

Remember: Access is a privilege, not a right. Please be considerate of landowners wishes.

CN = CAVERN S = SINKHOLE C = CAVE P = PENETRATION

SITE	LEVEL	OWNER	ACCESS DETAILS
MOUNT GAMBIER - SOUTH AUSTRALIA			
Evens Ponds	Nil	DEAH P.O. Box 1046 Mt Gambier 5290 (08) 8735 1177	Groups of 6 or more, phone/mail to Dept. for Environment & Heritage (DEAH) Smaller groups, no need.
Horse & Cart	CN	Peter Cunningham	By phone or mail, 1 week prior. Ph: (08) 8738 4003.
Tea Tree	CN	PO Box 2168, Mt Gambier 5290	
Little Blue	S	District Council of Grant	Little Blue - permission not required - must carry card.
Allendale	C	District Council of Grant	Obtain key from Lady Nelson Tourist Information Centre.
Gouldens	CN	DEAH	General Diving: Divers to contact DEAH and notify of date and site to be dived. Please make requests by phone or fax only. (Email no longer accepted)
2 Sisters	CN	P.O. Box 1046	Divers must have the correct CDAA diving endorsement for the site and carry current
Fossil	C	Mt Gambier 5290 Ph: (08) 8735 1177	financial CDAA membership card. The diver must have signed an indemnity with DEAH before access is permitted. Training: The Instructor is to notify DEAH of the date the sites are needed and to forward signed indemnities from each student and their temporary card number/ membership number.
Ela Elap	S	Mr. Peter Norman	Visit the house before diving.
One Tree	S	Private Bag 67, Mt Gambier 5290	If no one home - no dive!
Piccaninnie Ponds	S	DEAH P.O. Box 1046, Mt Gambier 5290	Permit holders by phone or fax. Be aware of delicate vegetation. Ph: (08) 8735 1177. Fax: (08) 8735 1135 NOTE: Indemnity form to be completed with membership renewal.
Hells Hole	S	Hells Hole - Minimum of 4 divers to be on site at all times..	
Pines	P/C	Pines - Unrestricted numbers / days	
Mud Hole	C	Mud Hole - Unrestricted numbers / days	
Nettle Bed	P	Nettle Bed - Open every weekend. Maximum of 4 divers, 1 dive per day.	
Iddlebidy	P	Iddlebidy - Open every Saturday. Maximum of 4 divers, 1 dive per day.	
Owner: Forestry SA PO Box 162 Mount Gambier SA, 5290 Ph (08) 8724 2876. Fax 8724 2885 Email: forestrysa@saugov.sa.gov.au Contact: ForestrySA by email, fax or phone to arrange permit. Collect permits from Carter Holt Harvey Mill Gatehouse, Jubilee Hwy Mt Gambier.			
IMPORTANT:			
<ul style="list-style-type: none"> No diving on Total Fire Ban Days. ForestrySA may apply Forest Work Bans if forest fire danger is expected to reach extreme. Such bans exclude the public from entering the forest. If in doubt, check with Forestry Ranger or Forestry Office, although signs are generally erected at diving sites to indicate such bans. Permit also required to run compressors during fire danger season. Keys for Hells Hole, Nettle Bed & Iddlebidy can be obtained from Lady Nelson Visitor Centre. 			
Kilsby's	S	Landowner leased to S.A. Police	Restricted access conditions apply - refer to the CDAA Website. Twin tanks, maximum of 40 metres depth. Write to: Gerret Springer, 30 Lorikeet Street, Mt Gambier SA 5290. Email: rolukage@ozemail.com.au, 4 to 6 weeks prior to wanting to dive. Please enclose stamped self-addressed envelope (Do not contact landowner) or book via web page. Access date now the first weekend of every month.
		No Visitors	No animals permitted. No mid-week diving.

CDAА SITE ACCESS

SITE	LEVEL	OWNER	ACCESS DETAILS
MOUNT GAMBIER - SOUTH AUSTRALIA (continued)			
Shaft	S	Generally open one weekend a month L. Claridge P.O. Box 15 Koroit VIC. 3282 Ph: (03) 5565 8793 A.H. Mob: 0408 052 070	For access dates contact Linda Claridge. Also, see Special Access Bulletin in Guidelines issue 69. Nitrox as a diving mix is not allowed in the shaft. Deco mixes ATTACHED to a shot line are permissible. Divers applying to dive in the Shaft must have documented experience of a least 5 twin-tank dives. Divers must provide their own harness and tank tapes. Email: garinda@tpgi.com.au
Hann's cave	P	P & A Lasslett	Groups of four divers only apply in writing to Site Director. Limited groups will be allowed access over the summer months. The site is very delicate and therefore only limited access is available. Divers applying will be notified as to further access details. Please include a stamped self addressed envelope.
Engelbrechts		Mt Gambier	Obtain key from Mt Gambier Tourist Information Centre. Access agreement must be signed prior to diving. 2 divers must sign out keys, all divers must sign in
- East	C	Council	advising which groups they are diving with. NOTE: Special conditions apply during March and April... See notice this issue. Please book public holiday dives with lessee.
- West	P	Lessee Ph: (08) 8723 2299	
Three Sisters	P	Millicent Council	Contact Records Officer. Access available for experienced Penetration divers only. Low profile or side mounted independent air systems required. Access agreement must be signed prior to diving. Please allow 4 weeks for indemnities to be processed.
McKay's Shaft	S		Contact South East representative Phil Argy at Mt. Gambier access and indemnities.
Tank Cave	P	Mr. DYCE	Access Manager: Noel Dillon Email: noel.dillon@macquarie.com
Baker's Cave	C		Please write to the Site Access Director to dive in Baker's Cave. Include stamped self-addressed envelope. Climbing equipment required. Only open October to April.
NULLARBOR - WESTERN AUSTRALIA			
Cocklebidy	C		Apply in writing for permission to dive at least 4 weeks in advance of trip to:
Murra El Elevyn	P/C		District Manager, C.A.L.M., PO Box 234, Esperance, W.A. 6450.
Tommy Grahams	C		Phone: (08) 9071 3733 Fax: (08) 9071 3657
Weebubbie	S/C		Apply to the Department of Land Information (DLI), now comes under the control of the Department for Planning and Infrastructure. Same location but new contact details Phone (08) 9347 5047 Fax (08) 9347 5004 Email: janice.leeman@dpi.wa.gov.au
N.S.W. - WELLINGTON CAVES			
Limekiln (McCavity)	P/C		Both Penetration and Cave Level are being accepted for this cave depending on it's water level at the time. The cave has a restriction at the entrance which is underwater making it a Penetration Dive. During drought, the water level drops to form a small lake below the restriction allowing experienced Cave Divers access to this delicate cave.
Water (Antidline)	C		Affected by high CO ₂ levels during Summer/Autumn.
Access is co-ordinated with the Wellington Caves management by Greg Ryan - gregr@cs.usyd.edu.au. Phone (02)97434157			
Rum Jungle Lake	S		Unrestricted access currently exists - Please refer advice in Guidelines No. 68 or check CDAA website.
Burrinjuck	S/C/P		This is a tri rated site. Please see details in issue No. 73. There are no specific access arrangements.

UP COMING COURSES

Cavern / Sinkhole Courses

Biannual (April & October) in WA, contact Gary Bush - gary.bush@bigpond.com

May 11-23, in Melbourne and Mt Gambier, contact Jane Bowman - 03 9579 2600
October 4th-17 2004, in Melbourne and Mt Gambier, contact Jane Bowman - 03 9579 2600

Two Courses: April 12-18 and June 14-20 in Melbourne and Mt. Gambier,
contact Rubens Monaco 03 5984 3770

One Course: April 15-18 in Mt. Gambier, contact Linda Claridge 03 5565 8793

Cave Courses

Biannual (April & October) in WA, contact Gary Bush - gary.bush@bigpond.com

Three Courses - May 17-23, June 14-20 2004, August 23-29 2004, in Melbourne and Mt Gambier,
contact Warrick McDonald info@abocean.com.au or 0408 374 112

CDAA PENETRATION COURSE

Next course will be at Easter this year from April 9th - 13th inclusive.
The cost of the course is still \$650.00.

Prospective applicants need to download the application form from the CDAA website and then send it fully completed to the address on the form.

The course is filling rapidly and will be cut off at 12 candidates (2 spots left).

The next scheduled course will be in October over two weekends.
This course is usually limited to 6 persons.

Contact Barrie Heard - Penetration Course Co-Ordinator. Email: iantd@dcsi.net.au

Forms can be downloaded from:
<http://www.cavedivers.com.au/dload/PenCourseApp2003.pdf>

TANK CAVE

~ DATES FOR 2003/2004 ~

	DATE
1	April 9/10/11/12
2	April 24/25/26
3	May 8/9 (Mapping)
4	May 15/16
5	June 12/13/14
6	June 26/27
7	July 10/11
8	July 17/18

WHOOPS...

We appologise for the error...
Belinda's contact number was
meant to be 03 9750 6494...
please disregard last issue!

C.D.A.A
Records officer
Belinda Klein.

Email
records@cavedivers.com.au

All mail now sent to:
PO Box 4336
Langwarrin VIC 3910

Contact Belinda on:
03 9750 6494.

Tank Cave Access

Just to let you all know that the access arrangements for Tank have been sorted out for the next few years. We still have 26 weekend booking slots including all Victorian and South Australian public holidays. We can also add two additional days on two weekends per year where non South Australian/Victorian divers will have priority access.

We shall also now be taking bookings for 10 divers per day, including the guide and their buddy, instead of 8 as in the past. This will require both guide and divers to be fairly well organised in order to perform 2 dives each on the Sunday.

I will be advertising on the booking schedule what time the guide intends to leave the property on the Sunday/Monday. This would hopefully reinforce to the divers that they will have to be organised or only perform 1 dive on the final day. Therefore could all guides please let me know what time they intend leaving Tank when they volunteer. Below are the dates for the remainder of 2003 and the first half of 2004. Many thanks, Noel Dillon

CDAI INSTRUCTORS

NAME A.C.T.	CONTACT No.s	STATE	Cavern	Sinkhole	Cave	Email
APPS, HEIKE	BH 02 6249 9170 AH 02 6291 0566	ACT	Yes	Yes	Yes	heike.apps@ga.gov.au
N.S.W.						
GRILLS, PETER	Home 02 4950 6262 Mobile 0419 820 920	NSW.	Yes	Yes	Yes	peter_grills@hotmail.com
ROBERTSON, ANDREW (currently inactive)	Home 02 9548 5987 Work 02 8868 8025 Mobile 0417 664 255	NSW.	Yes	Yes	No	buggs@tig.com.au
WALTERS, DESMOND	BH 02 6041 1405 AH 02 6025 3506	NSW.	Yes	Yes	Yes	descend@albury.net.au
SOUTH AUSTRALIA						
FEATONBY, TIM	Mob: 0402 129 253	S.A.	Yes	Yes	No	tim.featonby@defence.gov.au
MARRIOTT, MAX	AH 08 84473360 Mobile 0428 897 897	S.A.	Yes	Yes	Yes	dive69@senet.com.au
YARRA, GEORGE	BH 08 8447 5771 Mobile: 0418 847 889	S.A.	Yes	Yes	No	gumbyg@adam.com.au
WEST AUSTRALIA						
BUSH, GARY	BH 08 9281 9460 AH 08 9367 4701	W.A.	Yes	Yes	Yes	gary.bush@bigpond.com
NTH. TERRITORY						
ELLIOTT, CLAIRE	BH 08 8981 3049 Mobile 0417 808 647	N.T.	Yes	Yes	No	Email claire@divedarwin.com
WEISSE, RICK	BH 08 8981 3049 Mobile 0411 470033	N.T.	Yes	Yes	No	rick@divedarwin.com
VICTORIA						
AXTON, PAUL	BH 9782 1671 Mobile 0419 346 442	VIC.	Yes	Yes	Yes	lozhard@bigpond.com
BARCLAY, GARY	AH 03 5565 8793 Mobile 0407 052 074	VIC.	Yes	Yes	Yes	garinda@tpgi.com.au
BOWMAN, JANE	BH 03 9579 2600 Mobile 0407 566 455	VIC.	Yes	Yes	No	info@abocan.com.au

CDAI INSTRUCTORS

NAME	CONTACT No.s	STATE	Cavern	Sinkhole	Cave	Email
VICTORIA cont.						
BUGG, STAN	AH 03 9379 8791	VIC.	Yes	Yes	Yes	sbbugg@micronica.com.au
CLARIDGE, LINDA	Mobile 0408 052 070 AH 03 5565 8793	VIC.	Yes	Yes	Yes	garinda@tpgi.com.au
CORNELL, BRIAN	Home 03 5985 2514	VIC.	Yes	Yes	Yes	cornell@alphalink.com.au
DALLA-ZUANNA, JOHN	Home 03 9434 1216 Work 03 9480 1316 Mobile 0407 887 060	VIC.	Yes	Yes	Yes	jdz@smart.net.au
EDWARDS, CHRIS	0417 116 372	VIC.	Yes	Yes	No	cedwards@teksupport.net.au
HEARD, BARRY	AH (03) 5627 6474 Mobile 0419 401 276	VIC.	Yes	Yes	Yes	bheard@dcsi.net.au
MCDONALD, WARRICK	Work 03 9579 2600 Mobile 0408 374 112	VIC.	Yes	Yes	Yes	info@abocan.com.au
MONACO, RUBENS	BH 03 5984 3770 Mobile: 0407-863-498	VIC.	Yes	Yes	No	info@divemelbourne.com.au
VANDERLEEST, JOHN	Home 03 9575 3636	VIC.	Yes	Yes	Yes	vanderleestj@ozemail.com.au
WEALTHY, BOB	Mobile 0417 524 005 Home 03 5985 8338	VIC.	Yes	Yes	Yes	wealthy@pac.com.au

RE: SHAFT - DID YOU KNOW...

Some divers are fronting up to dive this site without a harness, carabineer or even a sling. Whilst prior arrangements with the guide may allow for this to occur, please be aware that you may be charged for the hire of those items.

The guides will happily supply the A-Frame, ropes and pulleys but it is highly recommended that you own your own personal climbing equipment.

SHAFT DATES, 2004

The upcoming dates are...

April 17/18 • May 08/09 • June 12/13 • July 03/04

*For information on any Shaft or course dates contact
Linda Claridge on 03 5565 8793 or email garinda@tpgi.com.au*

Guidelines Photo Gallery

These photos have been submitted by CDAA members for possible use on our cover. Unfortunately because they are photographed horizontally, they often aren't suitable... not to say they aren't great images. With Digital Photography, everyone becomes the artist!



Top Left:
Kilsby's
by Alex Jaksic.

Above:
Pics Silhouette.
by Rubens Monaco

Left:
Titled "ShaftLight"
by Tim Turner.

*A big thank you to
all our contributors,
keep the photos coming!*

Dave Bryant.

CDA A PRODUCTS ORDER FORM

Please make payable to:
CDAA, P.O. BOX 292
CALWELL, ACT 2905

	QTY / COL/SIZE	ITEM	UNIT PRICE	TOTAL	
BOOKS		Cave Diving Communications. A manual from NSS - CDS dealing exclusively with all underwater communications used in cave diving. Including touch, torch and line signals, and use of line arrows and jump reels. A must for all cave divers book shelves.	\$17.50		
		Cave Diving - A Blueprint for Survival. A book by the world-renowned cave diver, the late Sheek Exley, this is a case study of a number of accidents that have occurred in the USA and how to avoid them.	\$15.00		
		Basic Underwater Cave Surveying. The standard publication for anyone remotely interested in research and survey techniques used in water filled caves.	\$30.00		
		CDAA Occasional Paper No. 2. From National Conference 1981. Includes topics such as Fossil Cave, Belay Techniques and Cocklebidddy 1979.	\$2.00		
		Diving in Darkness by Martyn Farr	\$75.00		
		NSS Cave Diving Manual. The standard reference manual in cave diving covering just about every conceivable topic. New Edition.	\$55.00		
		The Darkness Beckons. By Martyn Farr. The history and development of cave diving.	\$75.00		
		An Introduction to Technical Diving. By Rob Palmer.	\$45.00		
		Deep into Blue Holes. By Rob Palmer. This is the project manual written about his trips to the Bahamas, diving some of the most advanced and spectacular caves in the world.	\$55.00		
		NSS Cavern Divers' Manual. The standard reference manual in cavern diving covering almost every conceivable topic. Also most principles behind safe sinkhole and cave diving.	\$30.00		
VIDEOS		Caverns Measureless to Man. Sheek Exley.	\$46.00		
		Cave Practice & Equipment. Edited by David Judson British Cave Research Association. Updated 295 Page book fully illustrated with over 200 line drawings & 33 pages of dramatic photographs. Full chapter on cave diving by Martyn Farr.	\$40.00		
		New Edition of Peter Horne's Lower South East Cave Reference. An illustrated catalogue of the Lower South East Region of South Australia.	\$130.00		
		Australian Caving Diving - A Contrast. By Tony Carlisle. Four short documentary type videos on Warbla Cave, Three Sisters Cave, The Road to Toad Hall and Tank Cave. Reviewed in Guidelines 54.	\$25.00		
		Australia "Nullarbor Dreaming". A world record exploration into a desert cave. This epic underwater exploration nearly ended in tragedy when a freak cyclone storm hit the area and the cave collapsed trapping the expedition below. The program is a graphic account of the expedition and their escape from the cave. Executive Producer - Andrew Wight.	\$29.95		
		Florida "Window to a Hidden World". The ultimate cave diving adventure. Andrew and Liz with fellow cave diver-explorer Wes Skiles, take us on a journey to discover the beauty and danger of the Florida aquifer. Beneath the surface of Florida lies one of the planet's largest freshwater reserves. Producers: Andrew & Liz Wight.	\$29.95		
		Mexico "Water of the Gods". An exploration of ancient Maya ruins and underwater caves. Producers: Andrew & Liz Wight. Director: Liz Wight.	\$29.95		
		Cuba "Beneath the Surface". The underworld of Cuba. This documentary explores the role water has played throughout time in the history of Cuba. Producers: Andrew & Liz Wight. Director: Liz Wight.	\$29.95		
		NEW 30th Anniversary Edition.	SIZE - Please Advise	\$5.00	
		T-shirts. Colours: Black, White, Maroon.		\$25.00	
CLOTHING		Polo Shirts. Colours: Black or Grey.		\$25.00	
		Polar Fleece Jumpers. Original Logo. Colours: Navy or Black.		\$69.95	
		Polar Fleece Vests. Original Logo. Colours: Navy or Black.		\$49.95	
		Beanies. Navy only.		\$17.95	
		Caps. Black only.		\$19.95	
MISC.		CDAA Key Rings. Blue with gold motif. CDAA P.O. Box on back.		\$5.00	
		CDAA Stickers. Yellow. (Include stamped, self-addressed envelope for delivery.)		\$1.00	
		Tank Cave Poster. Full Colour 14 1/2" x 25" poster of Tank Cave by Peter Rogers. Price includes p&h.		\$8.00	

Cardholders Name: _____

Address:

Postcode: _____

[illegible]

Expiry Date: _____ Signature: _____ Ph _____

Sub Total \$

Plus postage & handling	\$6.00
-------------------------	--------

TOTAL \$ _____

☐ Bankcard ☐ Mastercard ☐ Visa

Expiry Date: _____ Signature: _____ Ph: () _____ Fax: () _____

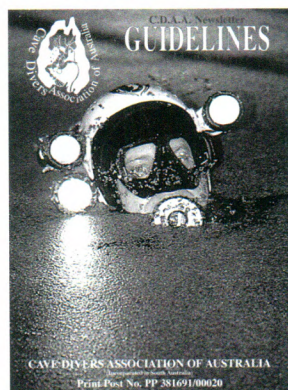
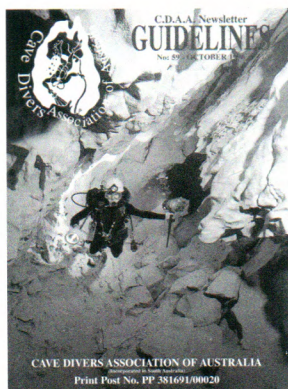
ADVERTISING RATES

FOR SPACE - APPLY TO TERRI ALLEN, PUBLICATIONS DIRECTOR...

Mobile: 0419 176 633 Email: pubdir@cavedivers.com.au

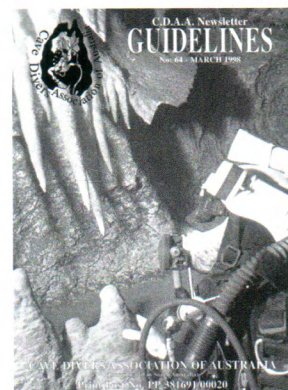
Size	Type	1 issue	Yearly*
Back page	Full colour	\$450	\$1350
Inside front page	Full colour	\$450	\$1350
Inside back page	Full colour	\$400	\$1200
Full page	Black+white	\$200	\$600
Half page	Black+white	\$125	\$375
Quarter page	Black+white	\$100	\$300

*Book up for 1 year's advertising and get 1 issue free. You also receive free full colour advertising on our web page: www.cavedivers.com.au



COVER PHOTOS WANTED!

WE'RE CONSTANTLY
SEARCHING FOR
PICTURES TO USE
FOR THE COVER OF
GUIDELINES -
SEND THEM TO:
THE EDITOR,
David Bryant,
PO Box 2198,
Rosebud VIC. 3939



Can be either a colour photo suitable for scanning or as a scanned RGB or CMYK TIFF on CD.
300 ppi High resolution JPEG's can also be emailed to seapics@alphalink.com.au

CNIX^{2-R1}



*The Quality
Heavy Weight*



25 YEARS OF INNOVATION

To size your own suit please visit www.ndiver.com.au/sizes

Northern Diver

TELEPHONE: 1300 783 111 INTERNET: www.ndiver.com.au

Slimline Nickel Metal

Dive Different. Dive Better. Dive Rite.

The all new Slimline Nickel Metal H.I.D.
Light from Dive Rite - The inventors of
HID Lights for divers.

Now you can own the smallest, lightest, best
made HID light ever.

Features include:

- Battery Canister milled from solid rod stock
This means an unprecedented 300 metre
depth rating - The best anywhere.
- Ultra small Nickel Metal Hydride battery
pack gives up to 4 hours of burn time.
- New self-locking latches prevent any
unexpected canister opening.
- Positive operation toggle switch is protected
by a new stronger switch guard.
- Comes complete with computer controlled
dedicated NiMetal charger
- Total weight out of water only 1.7 kg
- Canister size only 23 cm x 6.5 cm



So when you are considering a new Dive Light, make sure you
ask to see the complete range of genuine Dive Rite HID's.
Yes, they are expensive, but what's your peace of mind worth ?
After all, why settle for less - It's your ass on the line isn't it ?

*See the entire range at your local Dive Rite dealer.
Call for locations & further information.*

03 9775 0400 info@diverite.com.au

www.diverite.com.au

