



C.D.A.A. Newsletter
No. 89 - SEPTEMBER 2004

CAVE DIVERS ASSOCIATION OF AUSTRALIA

(Incorporated in South Australia)

Print Post No. PP 381691/00020

SENDING GUIDELINES

Scotia Semi-Dry STEAMER



RRP \$495

The Scotia semi-dry concept from SCUBAPRO incorporates many of the advantages of both wetsuits and drysuits in a sleek and comfortable package.

The Scotia is close fitting like a wetsuit, offering a low profile in the water, and reducing drag, it does not require bulky undergarments. The new semi-waterproof zipper is more flexible than other zips, and keeps water entry into the suit to an absolute minimum, avoiding that cold rush often experienced when first jumping in.

- 6.5mm neoprene with fine plush interior
- Stretch panels of EverFlex in the armpits for added flexibility and comfort
- 3mm roll-over neck seal with collar
- Robust rubber bonded knee pads
- Double sealed wrist and ankle seals
- Dry TI-TEK zipper across shoulders
- Available in men's and women's sizes
- Supplied with 6mm Superstretch hood with 3mm face and neck seal for incredible comfort and warmth

◀ Silverskin lined double seals on both wrists and ankles ensure a perfect semi-dry seal every dive

◀ A unique waterproof TI-TEK zip ensures a perfect semi dry seal whilst providing the diver with unrestricted flexibility



deep down you want the best

Massive Dry Suit Price Reductions Call Northern Diver 1300 783 111



Was \$3095 Now \$2599.00 **FLECTALON**

Specially formed 2.5mm Resin Inject Neoprene Armatex style outer lining provides strength. Ti-Ax Thermacote provides excellent warm. Rubber vulcanised boots.

Price includes custom fitting



Was \$2399 Now \$1699.00

Built from Ultra-Durable Cordura Rubber Taped, Sealed for life seams Internal Braces Equipment Pocket



Was \$2099 Now \$1649.00

Divemaster Sets the Standard by which other follow 4mm Hyper-compressed neoprene, Ti-Ax thermacote inside Heavy duty zipper, Vulcanised hard soled boots A tool pouch with Knife attached and standard pocket



Was \$2349 Now \$1549.00

Origin sets the standard for commercial divers or very cold diving.

Made from 8mm XO grade neoprene, extremely tough Armatex outer lining and Ti-Ax Thermacote heat reflective lining. Heavy Duty Zip, Hard Soled vulcanised Boots.



Was \$1989 Now \$1499.00

Soft but tough polyester butyl laminated fabric. Internal braces, Ti-Ax Thermacote Warm neck and Wrists Hard Soled Boots, Bellows Pocket with Knife Attached. Zip Flap Protection, tough self draining knee protection

* All suits come with a drysuit bag, repair kit and hood.



Flectalon 100 Was \$459.00
NOW ONLY \$379.00

Flectalon is a lightweight, high performance insulating material designed to reduce air movement and reflect thermal radiation. Flectalon retains its insulative qualities when wet or compressed and the quilt construction retains thermal integrity throughout the life of the garment. Regular insulators breakdown after frequent washing. Flectalon outlasts all hollow-fibre undersuit insulators.

- Reflects Body Heat Back to the Diver
- 100% Breathable - Insulates Totally
- Ultra Lightweight - Quick-Drying
- Bacteria & Fungus Resistant
- Fleece Lined - Ultimately Durable



Find out which drysuit size you are in five minutes.
Visit : <http://www.ndiver.com.au/sizes>

905 Drysuit

Dive Different. Dive Better. Dive Rite.



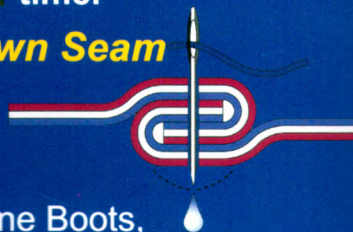
With patented seam technology, the 905 Drysuit is simply the most flexible drysuit you will ever wear.

Ultrasonic welded seams means no stitching holes to possibly leak.

Add to this the huge array of standard features, & the 905 wins the value for money race every time.

905 Welded Seam

Typical Sewn Seam



Standard Features Include:

Heavy Duty Latex Seals, Insulated Slim Line Boots, Suspenders, Reinforced Shoulders Knees Elbows & Seat, Arctic Hood Collar, Integrated Zipper Protection Flap, Two Large Thigh Pockets - One Removeable, One Fixed. Full 360 degree Rotating Inflation Valve, Repair Kit, Storage Bag.



See the entire range at your local Dive Rite dealer.

Call for locations & further information.

03 9775 0400 info@diverite.com.au

www.diverite.com.au

EDITOR'S CORNER

Publications and Records Director Annual Report (also From the Editors desk...)

The association has had a very successful year as far as memberships go. Up to June 30 2004 we had a total of 732 members. The break down for this is: Cavern/ Sinkhole=307; Cave=246; Penetration=179.

We had a total of 85 new members. This helps puts us in a very healthy financial position. Many thanks to Belinda for her hard work as records officer, an often thankless task. On the products front we added a couple of new products The Cave Divers by Roger Burgess. Tony Calrisle's video on Australian Cave diving is now a DVD. While Sheck's Caverns Measureless continues to be the fav read of many members. Jumpers and fleeces and beanies have sold like hotcakes with the onset of the particularly cold Winter to hit the southern shores. The 30th anniversary t shirts and polos are still available with a small price reduction. We are always looking for new products if you have suggestions.

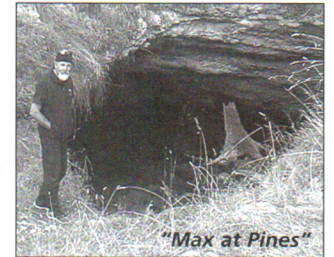
Heike has done a sterling effort in taking over products and has written the best spreadsheet for this I have ever seen. She is always on the ball with getting new things ordered. She has also looked after instructor materials and has been equally good at this task, ordering stock, mailing out and doing all the banking quickly and efficiently making Richard and Tammy's life easier. She has informed me of her intention to nominate for business director a job I think she would be well qualified to perform with her scientific, organised background as well as being an instructor.

David has been great to work with on Guidelines and hasn't it looked good this year. The number of advertisers now stand at 12 helping to cover costs and we now have 8 pages of colour which David negotiated for us at little extra cost. Thanks to those contributors of terrific articles and photos. Tony Richardson has been wonderful as the webmaster we really couldn't get anyone else who is a more efficient, no fuss, quick to get it done person. At the time of writing Tony had told me of his intention to nominate for standards director and personally I would be delighted to have him on board. As a new instructor I can see how much work needs to be done to update all the course standards and materials and I think Tony would do this job very well as well as all the other hard tasks required.

Finally thanks to my fellow directors for introducing me to the world of the CDAA directorate. I got a taste for things to come as RO but the responsibility really steps up at the top. I will be very sad to see Richard Price go. He has been a great steady as she goes business director. Great with the jokes when things get a bit tough and very wise with his advice to the whole directorate and myself. I am also sorry to see Max leave as standards director. While it takes a bit of getting used to his cryptic "Max speak" on email he is a wonderful kind man who has encouraged me greatly first as RO, then as a new director and finally as a new instructor, thanks Max, look after yourself mate. Rob has given a big hand in advice on Guidelines, advertisers as well as assisting with product sales at last years dive show in Sydney. Last of all thanks to Warrick who has mentored me through the process of being a director, including many hours of CDAA history, politics and all things nice, an important part of being a director. Warrick's love of cave diving and his devotion to the association are unquestionable. I think the 'evil retailer' gives a lot more to the CDAA than he will ever get back (just ask Jane!).

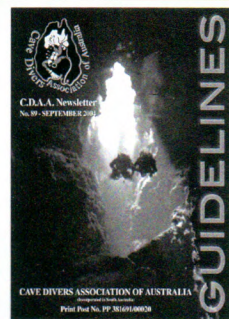
Well the first year has been a fun ride. See you at the AGM, the scones and sandwiches are on me....

Terri Allen, Publications and Records Director, pubdir@cavedivers.com.au
Email: pubdir@cavedivers.com.au



CONTENTS

Editorial	5
Rum Jungle lake	7, 8
Tank Cave Pee Valves	10
Memory Myth, Batteries	11
Kilsby's Access	13
Breaching Rules	15/16
Controversy Corner	16
High Standards	17
National Director's Report	18/19
Financials	centre spread
BALLOT PAPERS - NOMINATIONS	Middle Pullout
Position Nominations	21
Regulation Changes	22/23
Gardening in Tank Cave	24/25
Site Access	26/27
Courses Update	28
Site Directors Report	29
CDAА Instructors	30-31
CDAА Products	33
Tank Cave Dates	34
Easter in Gambier	35-37



Front cover:

Photo title:
"Exiting Engelbrechts"

Photo by
Neville Skinner,

Photographed in
Engelbrechts East

Composite art design:
David Bryant

CAVE DIVERS ASSOCIATION OF AUSTRALIA

ABN 65 062 259 956

P.O. BOX 4336, LANGWARRIN VIC. 3910

GUIDELINES is a newsletter of the Cave Divers Association of Australia. All articles for the following issue are to be sent to the Editor, David Bryant, PO Box 2198 Rosebud Vic. 3939. All articles and submissions shall automatically constitute an expressed warranty by the contributor that the material is original. We assume no responsibility for unsolicited material. Articles and information may be reproduced without prior permission provided reprints are accredited to the authors and GUIDELINES. Private advertising for caving and diving equipment may be advertised free at the discretion of the Editor. Opinions expressed in GUIDELINES are those of the individual authors and are not necessarily those of the C.D.A.A.

CONTACT LIST

The following is a list of people that can be contacted for CDAА matters. Please contact the most relevant person or, if unsure write to: C.D.A.A. P.O. Box 4336 Langwarrin VIC 3910
If you know who you want to write to, please address your letter to the relevant director. Website: www.cavedivers.com.au

NATIONAL DIRECTOR - Warrick McDonald
Phone: 8H (03) 9579 2600 Mobile: 0408 374 112
Fax: (03) 9563 8594 Email: natdir@cavedivers.com.au

STANDARDS DIRECTOR - Max Marriot
Mobile: 0428 897 897 Email: standir@cavedivers.com.au

Investigations Officer - Noel Dillon
Mobile: 0407 530 103. PO Box 112, Queenscliff, Vic. 3225

Instructor Materials & Products - Heike Apps
Phone: 02 6291 0566 PO Box 292 Calwell, ACT 2905
Email: products@cavedivers.com.au

BUSINESS DIRECTOR - Richard Price
Phone: 8H (03) 9505 0158
Mobile: 0419 308 407 Email: busdir@cavedivers.com.au

Treasurer - Tammy Beattie
Phone: 0417 540 700 Email: tazytam@dodo.com.au

SITE DIRECTOR - Rob Brennan
Phone: 08 8347 4885. Mob: 0414 821 322.
PO Box 260 Kilkenny SA 5009. Email: sitedir@cavedivers.com.au

Tank Cave Access - Noel Dillon tankcave@cavedivers.com.au
Ph: (03) 9635 9290 or Mobile: 0407 530 103

Shaft Access - Linda Claridge Mobile: 0408 052 070
Email: garinda@tpgi.com.au AH: 03 5565 8793

Manager Research & Mapping - Gary Barclay
(03) 5565 8793 (home) P.O. Box 15 Koroit Victoria 3282
Email: research@cavedivers.com.au

Products - Heike Apps
Phone: 02 6291 0566 PO Box 292 Calwell, ACT 2905
Email: products@cavedivers.com.au

PUBLICATIONS & RECORDS DIRECTOR - Terri Allen
Mobile: 0419 176 633 Email: pubdir@cavedivers.com.au
PO Box 7592, Melbourne VIC. 8004

Records Officer (includes Instructor Records)
Belinda Klein - Ph/Fax: (03) 9750 6494
PO Box 4336 Langwarrin VIC 3910
Email: records@cavedivers.com.au

Designer - David Bryant Email: seapics@alphalink.com.au

REPRESENTATIVES

New South Wales - Andrew Robertson
Ph: (02) 9548 5987 or 0417 664 255 (mobile) Fax: (02) 9548 0032
Email: andrewr2@compair.com.au or bugs@tig.com.au

South-east - Darren Walters
Phone: 0408 845 511 Email: gordonre@seol.net.au

PUBLIC OFFICER - Kevin Burrowes - Phone: 08 8272 6833
321 Goodwood Road, Kings Park S.A. 5034
Fax: 08 8272 8066 E-mail: kburrowes-cpa@senet.com.au

CDAА INSURANCE
Combined Public/Products Liability policy limit \$10,000,000.00
Insurer: Sportscover Australia Pty Ltd
Policy #: PMEL99/0042341 Expiry date: 11 July 2005

DESTINATION - NORTHERN TERRITORY

Diving Rum Jungle Lake

by Ian Taylor

"I was recently up in Darwin with work commitments, and the last time I was up here, I heard about Rum Jungle Lake. It's an old Uranium mine that is now full of water (and no longer radioactive). It's a CDAА rated sinkhole site, which peaked my interest even more.



drum that is the shot line to the bottom, which drops to 56m. Once on the bottom, with time extremely precious due to deco obligations, we'd tie a reel to the shot, then explore, returning back to the line then up, decoing on the shot-line. Swimming out, it was extremely surreal, with the water extremely warm, but viz no more than 1m. On the shot line, all good to go, we descended, and I could barely see Pete (my buddy). Dropping down through the warm

I decided that on my next trip up here, on one of the days off, I'd get down to the lake and get a few dives in. I packed all my gear, which with two regs, light, wetsuit, tank bands and dive computer, adds up to a lot of weight. I had my torch and regs in my carry on baggage and yep, I got pulled up at airport security and asked to explain what I was carrying. I also left my belt there accidentally but that's another story (she was a cute customs officer I admit...)

Well the day off had arrived, and work had given me a 2003 Magna V6 Executive with 6000kms on the clock to play with... mmm. So the day before I stopped in at Cullen Bay dive, which is owned and operated by great staff. They went out of their way to help, with one of the staff lending me her own DIN regulator adaptors. The last time I was up here, I was given the contact details of a guy from the shop who I rang and would pick up from his place the next morning.

With gear in the Magna, I left at about 7:30 down the Sturt Highway for about 120 kms, past the town of Batchelor towards Litchfield National Park. Once you leave Darwin, with a brand new vehicle, and unrestricted speed limits, it didn't take long to get there. The maps to the site off the CDAА website were excellent too. Pulling up at the small beach, it was amazing tranquil, Brolgas and Jabiru wading through the grasses. It was about 35

degrees, and I was sweating slightly, enjoying the tropical atmosphere compared to the cold, wet weather I had in Mt Gambier the weekend prior. What a difference! Gearing up, our dive plan was to surface swim out to the 44 gal

(25 degs) water, the viz reduced even further, until about 18 m, when it cleared and also got rather cool (I was in a semi-dry - just as well!). Below 18m it was pitch black, and I was glad I brought my HID. All we had for reference was the shot line and computers, and pitch black up and down. I was in heaven! At 40m, the narcosis started to kick in, and I was consciously slowing my descent. At 54m, I could see the base of the shot line, with two thick hawser ropes running off it. When I went to get my reel, I realised I was getting to the point of being 'off my tree' so I decided not to run a reel. At 56.5 m, the bottom is about a foot thick of silt, and not very interesting at all. I wished we had a compass, as I indicated to Pete which way to go, and pointed, and he agreed so we swam off. He looked more narced than I was. I knew from the site maps that it was a big bowl, and if we swam long enough we'd start to come up the side. As it turns out, this direction was directly opposite away from the beach and where we'd parked the car. Buggar. At 56m, my NDL was 2 mins, so we hit deco fairly quickly. It soon started to rise up, with flat sections interspersed with short 5 m rises. From the site map, I knew these flat sections to be the old access road which spiralled to the bottom of the mine. Continuing up, and we hit the warmth and reduced viz of the algal layer. It was fantastic doing the 10 mins of deco in this warmer water. Dive time 0:29, 10 mins of that deco. Unfortunately now we were on the opposite side of the lake, and had a 300 m surface swim back to the car. Not much life, a few small fish, but a whole lot of freshwater mussels, with a goldy coloured reflection on them that shone your light back very strongly. So after a 45 min surf int (not

AAAT 3½ Star



AVALON MOTEL

"The quiet motel off the highway"

LOCATED IN THE CITY CENTRE

www.avalonmotel.com.au

- Very quiet and central location
- Free Austar Channels
- Walk to shops, cinema, restaurants
- 21 Ground Floor Units
- Family Rooms
- 4 Bedroom Apartment (sleeps 8)
- Indoor Solar Heated Swimming Pool
- Enclosed Free Guest BBQ
- Guest Laundry
- Interconnecting Room
- Fully Refurbished
- Microwave Ovens
- Ironing board and Iron
- Hairdryers
- Toasters
- Tea & Coffee facilities
- Air conditioning & heating
- Fully refurbished
- Non smoking rooms available
- Internet Kiosk
- **CDAA Members Discount**

Hosts: Jim & Sue

Phone: (08) 8725 7200

Fax: (08) 8725 9491

Email: avalonmotel@bigpond.com.au
92 Gray Street, Mount Gambier 5290

much to do out here, and I had to work in the afternoon), a pear and some water, a quick check with the geiger counter (unfortunately not), we ran a line this time from the steel pole at the beach in. dropping down through the algal layer, over the short drops, we hit about 48 m until I ran out of line on my reel (125 m). As we ascended, from the last wrap we put, we'd scan with the reel as far as we could. Some of the rock formations were quite interesting, but mostly covered in green slime. Coming back, thanks to the short surf. interval and 48 m depth, we racked up about 28 mins of deco, and I threw in a 2 min stop at 20m for safety. 3 min stop at 6m, and 25 min at 3m. Pretty boring actually, laying in the slime waiting for that fresh water croc to come back. Surfacing, I was stoked to have dived somewhere that I had wanted to dive for a while, admittedly getting my radiation dose for the next 10 years !

Driving back along the windy roads was great, enjoying the Magna, and having fun. I dropped the gear I hired off at Cullen Bay divers and went to work (no time for a shower either, so I think i might have been glowing a bit). Recommended to other CDAA divers but I probably won't be back in a hurry. Also for interest, there is another mine up here called Pine creek, 120 m deep and they conduct Trimix courses in it. Looking at the area in general, with the number of fresh water springs around here, the potential for underwater cave exploration is huge, and I definitely want to do a bit of that on my next trip up here.

Socky

IMPORTANT: This e-mail remains the property of the Australian Defence Organisation and is subject to the jurisdiction of section 70 of the CRIMES ACT 1914. If you have received this e-mail in error, you are requested to contact the sender and delete the e-mail.

*While you're waiting for you next Issue of
Guidelines, keep up to date with all the latest
on the CDAA website...*

www.cavedivers.com.au

- Course Dates • Photo Gallery
- Access Protocols • Classifieds -FREE to members
- On-line Dive Bookings • Latest News

IF YOU WANT TO KEEP UP WITH THE LATEST NEWS,
REGISTER YOUR EMAIL ADDRESS
ON-LINE! DON'T FORGET THE WEB PAGE...



INTERNATIONAL MOTEL

Mount Gambier

QUALITY
INN

AAA TOURISM ★★ ★★

"The Cave Divers home away from home"

Facilities Include:-

- * Four Star Flag accommodation & hospitality;
- * 60 Modern Motel Units;
- * Under cover access to the Restaurant;
- * Indoor heated Pool/Spa/Sauna;
- * Tennis Court;
- * Austar Multi Channel Television;
- * Secure floodlit off street parking;
- * Late Check In's available;
- * Quiet location, central to diving sites.



SPECIAL ACCOMMODATION RATES AVAILABLE TO CDAA MEMBERS

Single Room: \$60 Twin/Double Room \$70 Extra Person \$10

Accom./Meal Deals - 2 Course meal and one drink deal - \$20

(Soup/Main or Main/Dessert)

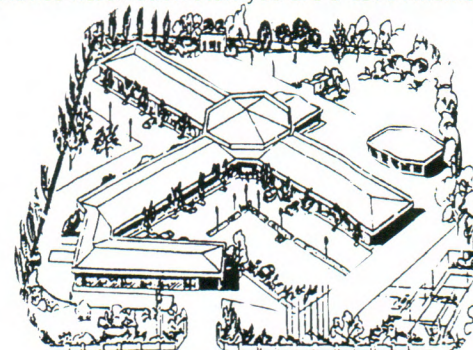
Breakfast \$14 Continental \$18 Full. (\$2 less in June to August)

For these prices, rooms will not be cleaned over the weekend, but towels will be replaced.

Rates will not apply over Easter.

RING TOLL FREE ON 1800 088877 TO MAKE YOUR RESERVATION

(Advise Reservation Staff you are a CDAA member)



OFFICIAL
CDAA
CORPORATE
SPONSOR

MT. GAMBIER INTERNATIONAL MOTEL

MILLICENT ROAD, (P.O. Box 797) MOUNT GAMBIER

TEL: 08 8725-9699 FAX: 08 8725-0843

EMAIL: internationalmotel@bigpond.com

WEB SITE: www.internationalmotel.com.au

Tank Cave, Pee Valves & Nutrients

On a recent trip to Tank Cave several dive groups planned and carried out extensive trips to the farther reaches. This prompted me to think about pee valves and the role of nutrients in the ecology of the underwater passages of the cave.

Urine discharged from pee valves on long dives delivers a mixture of nitrogen (in the form of urea), phosphorus (as inorganic phosphate) and small quantities of sulphur compounds to the water. In a system such as Tank Cave, with limited turnover of water and relatively speaking a small volume of water, levels of these nutrients are likely to increase. Now these levels will be incredibly low, but we know from studies in river and lake systems that enrichment of the waters with nitrogen and phosphorus promote algal growth at surprisingly low levels. Such growth requires light that clearly isn't present in the Tank Cave system, however pipes carrying drinking water throughout cities and towns also become covered inside with a black brown slime layer called a biofilm. This biofilm grows in the absence of light and consists of a matrix of dead and living bacteria and other microorganisms. The levels slowly accumulating in regions of Tank Cave could possibly be contributing to the establishment of generally dark coloured biofilms. The impact of the discharge of urine by divers on coral polyps on the Great Barrier Reef is also worth considering. Although the coral reef system is completely different to Tank Cave it is worth noting that sub-

tle changes in nutrient levels can have serious consequences. Studies have shown that the simple act of urinating near the reefs has a damaging effect on coral polyps in the vicinity. These coral polyps are adapted to waters low in nitrogen and phosphorus. In areas where these nutrients are increased permanently the nature of the reef is changed significantly.

So is any of this happening in tank cave? I don't know, but it is certainly worth considering and perhaps setting up a monitoring program to investigate. At the very least the establishment of current "baseline" levels for comparison with levels measured at later dates would seem to be prudent. It would also be interesting to collect data from pee valve divers on their habits as to where they urinate and to ensure sampling occurs in those regions. Samples of water taken from closed areas such as the Easter Extension and the newly extended S passages would also be useful. The study would need to be balanced with studies of the rate and direction of flow in the cave to establish the extent of turnover.

Similar studies are being carried out in the Mexican caves of the Yucatan Peninsula. The system is more at risk there because of the waste disposal practices in the area, but there is already some evidence that conditions in some of the caves are changing for the worst with a decrease in visibility being one of the possible consequences. Bill Phillips of Speleotech in Mexico, reports an event of "black water" in one of the Mexican cave systems that lasted for several months. The event

was characterised by poor visibility that has now cleared up, however the sediment in the cave once bright white is now dark in colour. Although the Mexican cave systems undoubtedly suffer from a higher pollutant load, it is worth remembering that compared to Tank Cave the water volumes are vast and the flow through the system much greater than at Mt Gambier.

In the absence of specific data from anywhere in the world and in particular Mt Gambier it would seem to be prudent for all divers using pee valves (or wet suits) to limit the discharge of urine to the waters of Tank Cave as much as possible. Alternatively it may be worth experimenting with collecting the flow from pee valves into a receptacle of some sort and returning it to the surface.

I would be happy to assist with the design of a monitoring program should the association wish. The research would make an excellent topic for part of a Masters degree at a University. Food for thought! Peter Mosse Ph.D., CDAA 347

Southern Diving Centre

- SSI Training Facility for all your Training needs from Open Water Instructor and Wreck to Tech.
- Large range of new & secondhand equipment
 - Air & Nitrox fills
- Full equipment servicing inc Oxygen cleaning
 - Local/Interstate & overseas trips
- Boat charter & organized shore dives

Just call in or give us a call for very competitive prices and the best and friendliest service Thursday to Monday 9am to 5pm (closed Tues & Wed)

1 Roy Tce Christies Beach SA 5165
Tel (08) 8382 1322 Fax (08) 8382 1509
Email soudiv@ozemail.com.au
www.southerndivingcentre.com.au



The Memory Effect Myth

Batteries and Battery Packs by Darren Gleeson, CDAA 3535

Possibly the biggest myth that exists particularly for Nicad batteries is the "memory effect". Most people quote it as the reason that the cells have to be flattened otherwise they develop some sort of memory, and can only hold a partial charge from then on. Like all good stories, this one has some truth in it!

The myth originated from the early days of satellites when they were using solar cells to charge the batteries and because of the orbiting of the craft around the earth, the batteries were subject to precise charge / discharge cycles thousands of times. The effect disappears when the battery cycle is suddenly varied, and it is very difficult to produce this effect even in a laboratory. So the "memory effect" is not a significant problem in domestic usage.

If you use NiMh or NiCad batteries as your power source for your dive light, and you like to discharge or flatten them before charging again, then chances are that you will damage your battery pack! While its ok to discharge individual cells to 0 volt, it is certainly not recommended to discharge an entire battery of cells "battery pack"! The reason is simple. A fully charged cell has a voltage of approx 1.2 Volts. A cell is considered flat at 0.8 Volt. When the battery is discharged below 0.8V per cell, one of these cells is inevitably weaker than the others, and goes to zero first. If the battery is further flattened this battery becomes charged in reverse, which again makes it even weaker. This creates a voltage depression. Eventually the battery's performance drops off quite suddenly, which is the very thing that the user is trying to prevent !! Most users know where the battery's "knee" is because this is where the performance starts to drop off. It is at this point you should recharge your cells. If you use halogen lamps with NiCad or NiMh battery packs, it is the point when your light starts to dim fairly quickly. For H.I.D users it's very different. H.I.D lamps will run below their operating voltage, but if you switch it off, it will not switch back on again. HID lights will not damage your NiMh or NiCad battery pack because the ballast will cut out well before the "knee".

One other thing, NiMh & NiCad's don't like getting to hot or cold. They do not take a full charge and they actually discharge (even under no load) much faster when over 40 degrees or below 0 degrees. They can build up internal heat when working and this can cause temperatures inside to increase also. Particularly avoid leaving your battery canister in a hot car for this reason. They should be left to cool down for a while after charging too. NiMh & NiCad batteries do self discharge too. As a rule of thumb a battery will hold charge (with no load) for about a month or 2, although when they get old or hot they may only last a day.

So remember, if you have a 12volt battery pack, don't flatten it lower than 8 Volts & also, you don't have to flatten it before you charge it.

BELLUM HOTEL

CDAA members \$35.00
per room per night.

Ensuite Bathroom for All Rooms

Each room has one Double bed and a Single bunk bed.

Extensive Menu available for lunch and dinner.

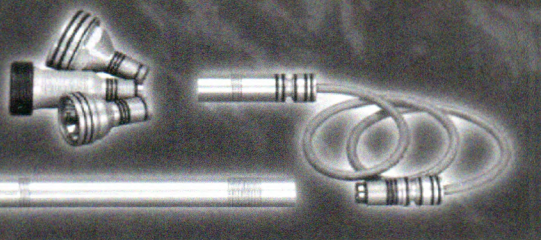
Contact Simon or Lisa:-
08 87385269

or email bellumhotel@internode.on.net

*And if you don't know where the Bellum Hotel is,
it's that pub on the road to Port McDonnell
just next to the turn off to Little Blue!*

Green Force

It's not only a Light,
it's a System!



Tank Connector Included

120 Minute Burn Time



Fast Charger Included

10 Watt HID

FREE Carry Case

Green-Force Lighting is here and as an introductory special to the cave and technical divers DiveTek is offering the Green-Force Arrow 12AA HID 50 with fast charger for the amazing price of;

\$1399.00

You will not get better quality than Green-Force

Contact Daryl at DiveTek for orders and information on all
Green-Force products
07 33424889 or 0401813412

www.divetekoz.com



DIVETEK

TECHNICAL DIVING GAS ANALYSIS EQUIPMENT



Site Access Conditions - Kilsby's Sinkhole

Strong demand by members to dive Kilsby's Sinkhole has lead to long lead times in securing a dive spot and disappointed divers. Still, there have been weekends with less than 50% of the divers booked actually diving the site. At the same time the landowner reported incidents where the access protocol has not been followed, namely gates not left as found. We need to make sure the site is managed in the best possible way to keep it open to our members. As a result, we have overworked the access conditions of the site. Those are applicable from 1 October 2004 onwards. If you have any questions, pls ring 0407 482 052 or email me at rolukage@oze-mail.com.au.

1. Dates: Currently access to Kilsby's Sinkhole has generously been granted for the first weekend of the month – exact dates are published on the CDAA website. Mid week diving is currently not permitted. Individual members are NOT to approach the landowner or lessee.

2. Applications: Divers wishing to dive are to write to the Kilsby's access contact per Guidelines or preferably via the web site (www.cavedivers.com.au) at least 2 weeks prior to the dive using the application form on the website. Bookings will be confirmed via the listing on the CDAA website and applicants be notified by email. A stamped self-addressed envelope MUST be enclosed with all applications requiring a postal confirmation.

3. Prerequisites: Before a booking will be confirmed, divers must:

- a) have a current indemnity on file (forms are on the web site and are valid for 5 years); and
 - b) be a financial CDAA member with at least a Sinkhole rating AT THE TIME OF THE BOOKING REQUEST AND FOR THE DATE OF THE DIVE.
- Divers not meeting the requirements per a) and b) will NOT be waitlisted in the future.

4. Booking limitations:

- a) Divers may book two dives (during one weekend) at a time. No further future applications are accepted (and also no waitlisting) until the confirmed dives have been done.
- b) Divers are not permitted to swap confirmed spots, i.e. using bulk bookings and then specify/change names last minute is not permitted. Arriving on the day and filling in of empty spots is not allowed.
- c) Two groups of ten maximum, per day, per weekend, i.e. up to 40 individuals per weekend are allowed.

5. Divers responsibilities:

- a) Groups will meet on the Sister's Rd, at the gate of the property to enter the property at 9:00am and exit by 12 noon at the latest or at an earlier time agreed to by the whole group. The second group will meet at the gate to enter the property at 1:00pm and exit by 4:00pm at the latest. All divers MUST leave the property after the first dive. It will be the same for both days.
 - b) Divers will meet at the allotted time to enter the property as ONE group. Divers are not permitted to enter and or exit the property individually or in small groups except for emergencies. NO ONE IS TO ENTER THE PROPERTY after the allotted time if the rest of the group has already entered the property. Divers arriving late will miss the dive.
 - c) Gates must be left as found. I.e. CLOSED GATES MUST BE RESECURED. Disturbance to stock must be minimized. DRIVE SLOWLY.
 - d) Only confirmed divers are allowed on site. Confirmed divers are the divers listed at the web site – no last minute 'fill-ins' are allowed.
 - e) NO VISITORS OR PETS ARE ALLOWED ON THE PROPERTY.
 - f) All toilet requirements must be met before entering the property.
 - g) A DEPTH MAXIMUM OF 40 METRES IS A LANDOWNER REQUIREMENT AND MUST BE ADHERED TO.
 - h) Twin tanks must be used.
- 6. Dive coordinator's responsibilities:** The first diver applying for a particular dive slot accepts to act as dive coordinator for all divers in their booked time slot and accepts responsibility for:
- a) Ensuring all access (non-dive) related responsibilities of all divers in this time slot as outlined in 5.a) to 5.e) are met
 - b) Reporting any irregularities during this time slot to the Kilsby's access manager
 - c) Reporting any divers who booked this slot but did not dive to the Kilsby's access manager
- Divers not willing to accept the above outlined responsibilities as dive coordinator for their time slot must not apply as the first diver for that particular slot.
- 7. Groups may be checked that requirements such as depth and time are being met at any time during the day.**

Enjoy diving!

Gerret Springer

Kilsby Access Manager

Breaching the RULES of Cave Diving

by Darren Walters, CDAA 3555

Just over twelve months ago I was suspended for twelve months for a breach of depth in the sinkhole rated site, Kilsbys. How deep I was is now irrelevant, but what I would like to share with you is what I have learnt through being caught and my subsequent suspension.

In breaching the depth limit I put the entire access protocol to the site in real jeopardy. The depth limit is there for a number of reasons:

- The first is that it is an access agreement with the landowner. To disregard their wishes was totally irresponsible.
- The second is that the depth limit is a regarded safe maximum depth by the lessees of the sinkhole the SA Police department. To disregard their wishes was unlawful. I also learnt that the indemnity that I had signed was suddenly not just a piece of paper about not suing the Government, but a contractual agreement under which I could be prosecuted.
- The third was total disrespect to the teachings of my cave diving instructors. Along with the fascinating introduction into cave diving, my instructors advised that access to

landowner's properties was a privilege not a right. To disregard their teachings is irreverent.

To breach the depth limit was also disrespectful to all of my fellow members in the CDAA. It could be asked why I thought that I was better than others in not having to respect the rules put in place? I have learned that I am not! It is funny, when you get into conversations with the general public and the conversation turns to the fact that you cave dive, you tend to be treated in awe and then as the realisation of what you do 'sinks in', they then tend to treat you as a suicidal maniac!

The CDAA has been and I believe still is the benchmark that still water cave diving in Australia takes its pointers from. To be a participating diver in The CDAA is to "up there" and I did not respect this level of achievement.

The only fresh water site that I was free to frequent after my suspension was Ewen's Ponds. "What a great little dive it is", I hear you say. Well let me assure you that once you have done it ten times, it begins to become monotonous! I would have to say that I dived it fifty times in the last twelve months to 'get my diving rush'!

I suppose the worst thing about it all is the knowledge that

you are regarded as the 'one that got caught' and talked about in hushed conversations.

Checking sites of the past six months has been more prevalent. Prior to this, as far as I know it had been a number of years since site checking had been done. With the extension of Pines, and the duel rating I can see the need for segregation of the two. As a Cave rated diver I do not have the skills to go to the next level. Many people have said that the jump from Cave to Penetration is not that big an issue, but the "issue" occurs when something inadvertently goes wrong. If you have not had the training, this is when things fall apart. To logically stop, think about your surroundings, evaluate the situation, devise a course of action, and implement it while underwater, with a limited supply of air in pitch blackness is something that needs to be taught to you and at least trained on some sort of regularity?

The question that the directors must be asking themselves is 'can we trust the members to do the right things and stay out of the restricted areas' and, if we find that they are not, what are the ramifications that could occur? Closure of the only real cave level training site? Up grade it to penetration rating? Pines is the cave site that all cave rated divers get their real taste of a total overhead environment in. Would this be a good outcome?

I congratulate the directors on the implementation of the signs and the maps on the web site showing exactly the areas that may, or may not be visited dependant on your relevant skill level. This gives no grey areas that may be contested. This needed to happen.

So, what have I learnt? This! To flaunt the imposed restrictions:

- endangers the access agreements that have been diligently cultured over the years by the CDAA.
 - is disrespectful to those landowners that give us permission to enter their properties and engage in our recreational sport.
 - is presumptive to our fellow divers that have reached higher levels of accreditation within our association.
- I implore you, as someone that has learnt a very big lesson in life, stop and think of the ramifications of your actions before you go that extra metre, or enter that restricted area.

Darren Walters 3555

Footnote:

Why have I written this? I believe, with the experience that I have been through, that most Members of the CDAA do not have an idea of the true ramifications that can occur from a breach of the rules and the position that the CDAA can be put in as a consequence.

DIVING HQ

DUI and Poseidon Dry Suits
Twin Tanks, 100's, 125's & 40 cu ft Stage Bottles
ALL FOR HIRE - TRY BEFORE YOU BUY
(conditions apply)

Cav/Sink Hole and Cave Courses
Dates and Prices on Application
Nitrox Fills

436 High St East Prahran 3181 Ph: (03) 9510 9081
www.divingheadquarters.com.au



Aspiring Products now in Australia...

Caving, Cave Diving, Climbing, Safety and Rescue Equipment

Email:- tonymorris@optusnet.com.au

Phone:- 0407 807 076



\$ (inc GST)	Product	Application
\$104.95	Speleo	Caving sit harness, with maillon, suited to SRT.
\$94.95	Triad	Basic sit harness.
\$119.95	Shaft Access pack	Includes the Triad, a screwlock karabiner and sling saving you \$15.00 and preserving sanity of the Guides.
\$159.95	15m Ladder	6m, 9m and custom lengths also available.
\$p.o.a	Hardware	SRT Kits, pulleys, ascenders, descenders karabiners etc. for recreational or commercial use.

(free low-priority delivery in Melbourne/Mt Gambier, elsewhere dependent on location & urgency)

All other access hardware for cave diving, caving, climbing, safety and rescue.
(distributed by Competitive Advantage Technologies Pty Ltd)

Controversy Corner

FINGER SPOOLS: A Personal Evaluation... by Stan Bugg

Warning! This article contains strong personal opinions guaranteed to offend some readers!

It is amazing how such an innocuous a piece of gear can create such controversy, but debate rages as I type, either praising or denouncing this innocent little item.

It appears that people either swear by them or swear at them, with no middle ground in the debate.

When new ideas appear, we need to resist the temptation to immediately take up an extreme viewpoint before we have PERSONALLY evaluated it.

It is equally foolhardy to:

- Unquestioningly accept alternatives without a thorough comparison.
- Automatically reject alternatives without thoroughly evaluating them.

I believe that criticism of any new technique or equipment is only valid if the critic has actually evaluated it in the field.

A case in point is the US alternative to our own jump reel; the finger spool.

I too have heard rumours of candidates having difficulty with spools on penetration courses, but I have also know of divers who use them with no trouble. (Besides, if having difficulty during a pen course was a criterion for condemning something, then the list could also include masks, fins, drysuits, gloves, reels, lights, HP gauges, regulators, BCD inflators, and..yes..jump reels ...but I digress.)

Jump reels have traditionally been closed reels of approximately 60mm diameter, holding about 15m of line. They operate much the same as all other reels, and have a lock mechanism. All component parts are integrated into one unit.

Training in use of a jump reel is most intensive at penetration level, but many instructors acquaint their students with them during cave training.

In the USA, the equivalent is a finger spool. This is an open reel with no moving parts or locking device. It is usually slightly larger than our jump reel, and it contains about 20m of line. The spool requires a "double ender" clip for attachment and locking.

Until recently I had little knowledge (or interest) in how they were used, and assumed that the process was much the same as a jump reel.

The only way to evaluate their true worth was to do a field test. I bought two spools, and sought advice on their use from Paul Leslie and Steve Trewavas. They confirmed that entirely new techniques were required.

After some dry practice in the back yard, I leapt under Portsea jetty and got serious. After forty minutes of reeling out and back, tying off and untying, (much of it with eyes closed or without mask) I finally started to get the routine down. Paul and Steve corrected several minor handling errors, and a second underwater session started to produce consistent results. I next ran it in tank cave, with no problems.

What are the differences?

Use of a spool is more complex than using a jump reel, and the techniques are quite different. You cannot assume that because you can work a jump reel that you will adapt to the spool quickly.

A spool has no moving parts, so it cannot jam. However it relies on the addition of the double ender clip for locking off, attaching to the diver, and attaching to other lines. Without the double ender, (which is NOT permanently attached to the spool) the spool is virtually useless. Management of the double ender clip is a key step in the procedure when using a spool. If you turn up for a penetration course planning to use a spool, and you drop your double ender in the silt in the first minute, you might as well pack up and go home! Some divers carry a spare double ender, which highlights how important it is to the overall system.

Once the procedures are mastered it is an efficient technique. As with ANY reel, the spool should only be filled to 2/3 capacity. My Halcyon spool came with 40m of line, which I have since shortened to 30m.

My Divetek spool held a more realistic 20m on delivery.

My conclusions.

- A spool is an acceptable alternative to a jump reel.
- informed advice on how to use a spool before you take it into a cave. The processes are more complex than those required for a jump reel, and it will take more repetitions to master.

GUIDELINES DEADLINES

If you would like to contribute to Guidelines in 2004 and 2005, you should note the following deadlines for submission of materials:

Deadlines for publication:

- 20th Nov. for December 2004 • 20th Feb. for March 2005 •

"High Standards"

Hi all, Well it is that time in the year when we give our final reports for the year...

For me it is my last as I won't be standing for the position of Standards Director. Despite my previous conviction to stand as I think one should. The first two years are your learning years in the position and then I believe the next two years are when and providing you have faith in the directorate complete the items you spent the last two years preparing. It has been a very much a learning curve for me this two years in Office. My three principles were Look, Listen and Learn when I came to office and I leave three thoughts to ponder on.

I would say that for any one taking on the position. Perhaps consider these items very carefully:

- Be sure you keep your position of independence yet work as one for the cause of the CDAA.
(Don't allow the CDAA to become a club for the Few. It is an Association working for all)
- Be sure you can above all work with the directorate. Not just some in the group of five but every one. Should you find that there are indifferences for what ever reason (and believe me there can be) it can make the progress and agendas that you all wish to achieve for the CDAA very difficult.
- Be very careful that you complete any work before handing it in as unfortunately unmarked draft versions are judged unfavourably by the critical eye and your project does not get of the ground.

What has been achieved:

- I believe that the safety and integrity of the CDAA has been maintained for the two years that I have been Standards Director.
In our ever changing world this is a high achievement for myself and all directors.
- We have run some very successful Penetration programs of the highest standard. Thanks to all concerned.
- Much work has been done on the Instructor Power point presentations and I believe that most of the Instructors who have seen the format and those that have have used it satisfactory. Some developed the idea on similar lines but incorporated their shop needs to suit, but still keeping within the core subject. In principal we are utilising the learning in the Student manuals. It has proved very successful in the Penetration Programs and has had a high pass rate in theory since we introduced it to this training level.
- Counselling and penalties to those divers found to be out side the guide lines of Land Owner and CDAA protocol done in a fair and compassionate manner for all concerned.
- Adoption of the Australian Standards AS/NZ 2299.3.2003 Occupational Health and Safety added to our system. This gives a safe parallel and a known standard to work with for future goals in mixed gas and Rebreathers.
- Much work done on the climbing and SRT skills for Instructors and divers. Re sourcing the appropriate people to consider training CDAA Members. In South Australia there is such a group willing to train Instructors along the same standards as the ASNZ occupational health and safety standards.
- Cavern / Sinkhole program re written to accommodate new standards of training. This program has been tested by a group of instructors. Most that tested it were happy with the training. In particular the extra pool time learning the reel skills and Alternate air source no mask test. Consideration was written into the program for Deep dive assessment skills in a controlled water environment and an environmental dive consideration in Pic's with the role of deepest dive first a high safety consideration.
- New skill levels in the Penetration Program and a continual drive for Penetration Instructors.
- Renewal and continual drive for CDAA Instructors. Some success in other states other than SA and VIC.
There are Potential Instructors in the que to take CDAA Status soon.
- The assessment of other organisations to become members of the CDAA and cross certification of equivalent training this is still an on going area. Some progress has been made.
- Review of Instructor materials being carried out and Instructor prerequisites being up dated Including Instructor certificates of recognition.
- A team effort by all instructors and office bearers, thanks.

What of the future?

There is so much work still waiting in the back ground to be finished in Standards. The above list but a few that has had work done on them or finished.

I would like to thank Rob Brennan for his support during my appointment as a Director, Barrie Heard and the Penetration team of Instructors. I would like to thank the over whelming majority who voted me to the position of Standards Director. To the incoming Director my phone and door is always open. Just after midnight you have to make the coffee.

Last thought of the day: "Put your hand in a bucket of water and you make ripples. Take it out and it is like you were never there!"

Thanks for listening

Regards, Max B Marriott, CDAA Standards Director

NATIONAL DIRECTORS REPORT

2003 - 2004

This past year the Association has experienced a number of positive events:

- New Instructors, although not spread throughout Australia we have seen a major increase in our teaching numbers.
- New members, a number of Instructors have started teaching again and this has shown in the Certification numbers. Renewals from "old" members have also increased our data base.
- Positive financial position, again another year of sustained growth and investment has kept the CDAA in the "black".
- Attendance at the Dive Show last year in Sydney saw a number of members attend our AGM and the 30th anniversary cocktail party afterwards.
- 30th Anniversary Party – Mt Gambier. Arguably one of the best nights ever in the Associations history.
- New access agreements with Landowners – ensuring access and the smooth transition of cave divers to the water.
- 5 year Tank Cave lease.
- New site maps-Tank Cave mapping almost completed, Pines extension, Nettle Cave and Daves Secret Cave.
- Tables installed at sites for gear changing.
- Access to two re-opened sites. Daves Secret Cave and Nettle Cave.
- Web Site expansion – now with on line booking, membership renewals, site maps, access procedures and photos.
- Media awareness – magazine interviews and TV guest spot on the George Negus Show.
- Government input – Australian Standards - recreational diving, cylinder valves, occupational diving and cylinders. Parks NSW, DEH SA, Forestry SA. City of Grant, Mt Gambier Council.
- Guidelines – new photo format, more articles, more advertisers which has reduced the loss we previously made on every issue.
- Penetration members at a record high – more courses, greater numbers.

Future efforts will be towards the following:

1. Re-opening of sites.
2. New site bulletins.
3. Complete rewrite of the Standards and Procedures manual.
4. New Cavern/Sinkhole course outlines.
5. New cave course outlines.
6. New Penetration course outlines.
7. Re-vamp of the Members Manual.
8. Re-vamp of the Instructor Manual.
9. New Power Point presentations for all courses.
10. Website to become more of a tool for members with bookings and access made easier.
11. Access to all Office Bearers through the web site by email.
12. Quality Assurance of all CDAA Courses and Instructors.
13. More gear tables to be installed.
14. Hall of Fame.
15. Life Memberships.
16. Establishment of a CDAA Museum.

The last year has witnessed the suspension of a number of members because of depth and access violations. The Association will be checking cards and access on a regular basis in the future and remember it is each member's responsibility to report violations.

Kilsby's access has now changed because of a number of problems associated with this site. Do we want to lose this valuable dive site? The answer is NO! So, there are now new access conditions, make yourself aware of the requirements before booking because we will NOT risk losing this site because of a few irresponsible members.

A number of goals were not reached, it could be said that this is the fault of the Association and its office bearers. It has been said we are not advising volunteers who stand for office just what the job entails. I know that Tony, Heike and George (all standing for office) are aware of most of the requirements; after all it's just a matter of reading the Constitution and Regulations under their job description. Tony has many years of

experience under his belt and is very aware of the pitfalls of office, having served before. What some don't appreciate is the time and demand that is made on us as officers of the Association. Say goodbye to private moments, they will be asked to defend and explain everything that happens and doesn't happen 24/7 until and after they complete their term of office. Some can't handle it, some resign; others just don't do the job. Before you volunteer take a good hard look at yourself and assess just how much you are willing to sacrifice. The handover of position should be smooth but often the new office bearer is left floundering without a paper trail or they are unwilling to ask for help and in some cases won't take it. When a job hasn't been done, what seems to happen, because of unity and "showing a collective face" is a cover-up by office bearers, and all wear the blame. It's time that everyone accepted that there is a job to do, it won't make you more friends and it's likely to cost you some but it's a hell of a personal reward when you do a good job. As National Director I

shouldn't be placed in a position of disciplinarian, berating office bearers and making enemies of people I thought were friends, but it seems to go with the territory and if I couldn't handle it I wouldn't be here. A word of advice to the incoming Directors – being a "nice guy" just doesn't work, what's important is doing the job you were elected to do.

The Cave Divers Association of Australia is going from strength to strength; we are aware of our shortcomings and intend to rectify them in the coming year. The Association is "US" the members and we can be proud of our achievements. I will be presenting a new 5 year plan by working with the Directors and members. Give me input.....send me an email about what you think as an Association we should do and I will acknowledge every mail and present them to the Directors for consideration. Regards,
Warrick McDonald
National Director



CDAA 30TH ANNIVERSARY CLOTHING

T Shirts • 3 x Colours; White, Black & Maroon
4 sizes M,L,XL & XXL - Only \$20.00

Polo Shirts • 2 x colours
Grey with black trim & Black with red trim
Also 4 sizes - Only \$32.00

There are only a limited number of each of these so get in quick!

Order via the form in this issue.

FOR SALE

Drager Dolphin Rebreather with carry case, Drager bail-out system and five litre tanks. This unit has done two dives on one day so it as new! \$4,500.00 Contact Jane Bowman 0407 566 455

POSTAL VOTING INSTRUCTIONS - SEPTEMBER 2004

Please follow these instructions carefully to register your votes in the September 2004 Ballot

Step1 COMPLETE THE BALLOT PAPERS

Clearly indicate your preference on all ballot papers following the instructions for each question. Fold your ballot papers and place them in a small envelope and write on the front of that envelope:

BALLOT PAPER ENVELOPE

By placing your ballot papers in a separate envelope, your vote remains anonymous.

Step2 PLACE THE BALLOT PAPER ENVELOPE IN ANOTHER ENVELOPE ADDRESSED TO THE RETURNING OFFICER.

The address for the Returning Officer is:

**The Returning Officer
Cave Divers Association of Australia
PO Box 7592
Melbourne VIC 8004**

Step3 SIGN THE BACK OF THE ENVELOPE ADDRESSED TO THE RETURNING OFFICER

On the back of this envelope you must write your name, CDAA number and signature. This serves to declare that you are the person whose name appears on the back of the envelope, and that this is your only vote in the September, 2003 ballot.

Step4 SEND YOUR ENVELOPE TO THE RETURNING OFFICER STRAIGHT AWAY

Your votes must reach the Returning Officer by the close of business Wednesday September 22nd 2004.

Any questions may be directed to the Returning Officer—Geoff Chambers or Publications and Records Director—Terri Allen.

C.D.A.A. POSITION NOMINATIONS

FOR 'STANDARDS DIRECTOR'... candidate George Yarra, CDAA 3356

Cave Diving - a desire to explore where no-one has ventured. As an active penetration diver, site guide and CDAA instructor I would like to see the CDAA move ahead taking advantage of new technologies in Standards of safe diving practices, training and course content. I believe I can achieve this as Standards Director.

My first aim to benefit members is to run workshops to supplement and broaden our already extensive diving knowledge. I would like to draw on the considerable experience and wide-ranging expertise of you as members, to accomplish the above with an open approach and fresh ideas.

George Yarra 3356

FOR 'BUSINESS DIRECTOR'... candidate, Heike Apps, CDAA 2776

I have been a member of the CDAA for 10 years and an instructor for 4 years. I am an enthusiastic cave diver – and travel to Mt Gambier regularly from Canberra.

My main occupation is as a Spatial Information Scientist with Geoscience Australia, so my experience in business as such is limited, although data collection, accurate records and reporting are similar to both fields.

For the last 12 months I have had the role of instructor materials and products officer, and have put a lot of effort into updating and streamlining the system. I have developed spreadsheets for stock control and have become familiar with banking, record keeping, as well as the CDAA as an organisation.

I believe I have a lot to offer and as business director could contribute to a solid future for the CDAA.

Heike Apps, CDAA 2776

FOR 'STANDARDS DIRECTOR'... Tony Richardson – CDAA 641

I have been an active cave diver and member for the last 25 years, examiner/instructor 1982-1996, Shaft guide 1990-1996, Training Manager 1988-1990, Training Committee 1993-1995, managed the CDAA website cavedivers.com.au 2000-2004.

I have a wealth of experience and a historical perspective to bring to the position of Standards Director. From discussions with the current directorate I am confident we can develop a close working relationship to further the development of the CDAA as the premier cave diver training organization in the country.

For a full candidate statement and list of planned objectives, please go to:

*<http://members.datafast.net.au/trichardson/>
or contact me trichardson@ansoniac.com.au*

Tony Richardson – CDAA 641

• C.D.A.A. REGULATION CHANGES •

1. DEFINITIONS

e) eligible members are full members and life members who at polling date have...

Change to

e) eligible members are full members, life members and inactive members who at polling date have...

Reason: The new inactive status has been left out.

f) CDAA Instructors are listed in the latest issue of Guidelines and as amended from time to time in subsequent issues of Guidelines.

Change to

f) CDAA Instructors are listed in the latest issue of Guidelines and the CDAA website and as amended from time to time in subsequent issues of Guidelines and the website.

Reason: Recognition of our website as an official means of communication.

j) the "Standards and Procedures Manual –July 1997" details the individual....

Change to

j) the current Standards and Procedures Manual details the individual...

Reason: Removing the date means that we do not have to update the Regulations every time we make a change.

l) Guidelines is the official publication of the Association.

Change to

l) Guidelines and the CDAA website are the official publications of the Association.

Reason: This officially recognises the website so that we can announce news, events, and warnings etc immediately instead of the long delay we have now between issues of Guidelines. This does not mean that items would not appear in Guidelines just that it is another official format.

3. AMENDING THE REGULATIONS

2) Amendments will come into force when members are notified in writing or when they are published in "Guidelines" in accordance with the provisions....

Change to

2) Amendments will come into force when members are notified in writing or when they are published in "Guidelines" and/or on the CDAA web site in accordance with the provisions...

Reason: This allows instant application by using the web site although notice would be given in Guidelines as well.

7. DIVING IN RATED SITES

3) Associate members are not eligible to dive in CDAA sites.

Change to

3) Associate members are not eligible to dive in CDAA sites unless a temporary visitor's permit has been issued.

Reason: We don't allow for temporary visitors to dive otherwise.

8. DIVING MEMBERSHIP CARDS

9a) the certification level(s) of the member.

Change to

9a) the certification level(s) of the member

Reason: Double sssss...just to fix up spelling.

1.2 STANDARDS AND PROCEDURES MANUAL AND CDAA INSTRUCTORS

6) A list of active CDAA Instructorsissues of "Guidelines".

Change to

6) A list of active CDAA Instructors.....issues of "Guidelines" and on the CDAA web site.

Reason: As detailed before quick communication and another means of getting information.

1.3 CDAA SITES REQUIRING CAVE DIVING SUPERVISION

1. SUPERVISED DIVING SITES

1) Supervised Dive Sites are sites where access is strictly.....specified in Guidelines and as amended from time to time in subsequent issues of Guidelines.

Change to

1) Supervised Dive Sites are sites where access is strictly.....specified in Guidelines and/or the CDAA web site and as amended from time to time in Guidelines and/or on the CDAA web site.

Reason: Again web site recognition as an official outlet of information.

• C.D.A.A. REGULATION CHANGES •

continued.....

3) Site Access Managers and active Cave Dive Supervisors are listed in Guidelines and as amended from time to time in subsequent issues of Guidelines.

Change to

3) Site Access managers and active Cave Dive Supervisors are listed in Guidelines and the CDAA web site and as amended from time to time in Guidelines and on the CDAA web site.

Reason: Again web site recognition as an official outlet of information.

3. CAVE DIVING SUPERVISORS

5) Cave Diving Supervisors must provide to the Records Officer a copy of their insurance certificate proving currency to undertake dive leadership activities.

Change to

5) Cave Diving Supervisors must provide to the Records Officer a copy of their Insurance Certificate, CPR/First Aid certificate and Oxygen provider Certificate.

Reason: As per the Australian Standard and keeping in line with our new Tank Cave Diving Supervisors forms.

8f) assessing first time divers to the site by accompanying them on their first two dives.

Change to

8f) assessing first time divers to the site as per site requirements.

Reason: Reads like this is a mix up of Tank Cave regs. By removing the two dives we leave it open to suit all sites, now and in the future.

1.4 SPECIAL VISITORS

10) A Special Visitor Permit holder shall abide by the Regulations and Constitution of the Association, sign the Indemnity Form and comply with any other conditions.

Change to

10) A Special Visitor Permit holder shall abide by the Regulations and Constitution of the Association.

Reason: The rest is a repeat of information already stated.

1.5 MISCONDUCT

3) The Investigations Officer etc.....reports of investigations to the Standards Director.

Change to

3) The Investigations Officer etc.....reports of investigations to the Standards Director or the National Director.

Reason: The Constitution states that the Nat. Dir. and the Std Dir. Look after investigations therefore our Regulations should mirror them. Also it may be an investigation where the Standards Director may have a vested interest (and vice versa).

SCHEDULE 2: FEES, LEVIES AND CHARGES

Late membership fee. \$45.00 (charged on renewals between 31 Aug and March 31. \$10 between April 1 and June

30) This is very hard to follow and another problem for the records officer who is faced with a confusing Constitution ruling about joining fees. If someone is late, we give them 2 months grace now anyway (July 1st – August 30th). Why not remove this \$10.00 confusion and simply state any renewal after the 31st August attracts a \$45.00 late fee per year of lapsed membership. Lapsed members would pay \$45.00 plus the years fees up to 5 years maximum after the Standards Directors approval of qualifications/currency. I suggest a new card and number is issued after 2 years this will encourage members to keep current and keep their number. ie say ...5 years that would be the current fee, now that is \$70.00 plus the late fee of \$45.00 per year, 5 years would be \$225.00 plus \$70.00 = 295.00. After 5 years a retest at the divers cost paid to an Instructor, plus joining fee and membership again.

Additions to Schedule 2:

Tank Cave Access \$100.00 (This would apply to visitors using Special Visitors Permits as Associate members)
Penetration Course Fee \$900.00 (Reviewed annually)

SCHEDULE 3: RATED AND SUPERVISED DIVE SITES BY CLASSIFICATION

1. Remove from heading SUPERVISED as not all sites are supervised.

2. Sinkhole heading – remove The Black Hole, Ten Eighty, Bullock Hole

3. Cave heading – remove Swim Through add Daves Secret Cave

4. Penetration Heading – remove Pannkin Plain, Warbla, add Pines (back area past signs), Nettle Cave

GARDENING IN TANK CAVE

The two recent finds in Tank Cave are the result of a new penetration diving technique called "gardening".

The first of these finds, known as the Goat Track, provided a connection between the ends of H-tunnel and G-Tunnels, cutting around 800m OFF the trip to the end of G-Tunnel. At the same time, it also provided one of Tank Cave's longest circuit dives.

The second find "the New South Way" extended S-tunnel by more than 200m, exposing yet another unique piece of Tank Cave geology.

About one year ago, the radio directional finders being used as part of the mapping technique highlighted the fact that ends of H and G tunnels were a lot closer than originally thought. Both tunnels appeared to terminate on the same rock collapse.

This evidence provided the drive to find a connection through the rock collapse. The only problem was where? A side tunnel off H-tunnel came within 6m of the last known point in G tunnel. This side tunnel coming off H4 travelled along the base of the rock collapse, was less the 0.5m high and lined with deep pure white silt.

Over the next 6 months, 3 divers, John Dalla-Zuanna (JDZ), Ken Smith and myself systematically started to push this area. Pushing meant moving rocks and slowly creating a trench – with this activity came the term, gardening.

Gardening this area for several months returned one positive result. It told us that that this passage went nowhere. Oh well, back to the drawing board.

Not willing to give up, the two Johns continued to search for possible leads around the area. JDZ continuing to scout the flat silty areas around the garden, while I moved onto searching around the main H tunnel.

H-tunnel ends in a pinch, but to the right there is a rock pile. Too small for the smallest of cave divers, but big enough to show potential. Over the coming months, I made a number of dives to this area, very carefully moving stone after stone and zig-zagging up the rock pile. In spots, it this meant removing my dive helmet because the helmet's profile was larger than my body's profile (I guess that means I have a big head). The sheer elation of quickly making it to the top and seeing a large room (large meant that you didn't have to squeeze to move anymore) was over whelming. But more over whelming was the narrow slot between myself and the room beyond. This slot was too small even to get through even without wearing a helmet.

But still the effort of reaching this point in the rockpile was worth it, for over on the right about 3m away the slot opened to around 300mm – possible to squeeze through with just the right amount of stupidity. But reaching this point would mean having to go back down to the bottom of the rock pile and starting a new trench. Oh well, what's a few more months of gardening. Apart from starting to wear holes in the chest and elbows of my drysuit, all it would require is some more nerve

racking movement of rocks on a 70 degree slope....

Over the coming months, a routine developed. The area would be reached using a stage cylinder. This ensured that both side mount 100cf cylinders were full at the start of each gardening session. Due to the incline and being virgin passage, it would take only minutes before viability would be reduced to zero. This meant that a mental picture needed to be painted of the rocks before anything was touched. One by one, a rock was inched away, carefully feeling other rocks above for any movement. No rock would be moved more than an inch before the rock behind was tested for stability. When satisfied that an avalanche would not result, the rock was carefully lifted down the slope until a suitable spot could be found to place the rock. This task would be repeated until you had a sense of humour failure. This normally happened around the 30min mark when the mind moves off the job and onto wondering what they hell you are doing here in the first place. When this happened, it was time to retreat and come back another day.

After many humours trips, the slot at the top of the rock pile was finally reached. Not exactly at the point that was hoped, but close enough. A quick turn to the right and the movement of a couple of large rocks and it's a go.

Now the \$64K question. The slot here changed from vertical rock rubble and became horizontal and consisted of soft limestone, top and bottom. Getting through would mean pushing the body through about a few metres of plug. This would result in zero visibility and there was no where to tie off. Once through, it appeared that you would need to turn sharply left and move along the top of the slot. This meant that unless you had somewhere to tie off, the line would pull back along the slot causing a line trap. As you had no way of knowing if you could turn around, it was likely that you would need to reverse out. Given the sharp turns needed to get into this section, total siltout, no tie off points and needing to reverse through silt, the prospect of going forward was not a good one. In fact, not only was there a sense of humour failure, but Alfred Hitchcock music could be heard in the background. A dilemma set in – stop safely with no reward or push on with risk.

The answer to the dilemma came in the form of an underwater strobe, just one more weapon in a gardener's arsenal. A high intensity strobe unit used by Police and Emergency Services was placed at the top of the slot (I was glad we were held up by those road accidents on the way over. I wonder if they noticed.....I think I'll stop there). The strobe would flash quite happily for the next 48 hours. More than enough time for the two Johns to take the long way around G Tunnel to see they could spot the strobe from the other side. Finding the strobe would involve pushing every possible nook and cranny at or near the end of G-tunnel.

This time, the cave gods were on our side. Whilst I was pushing around the side of the terminal rock pile at the end of G-

tunnel, JDZ attempted to see if he could see the strobe from the domed room on top. What was found couldn't be sweeter. Sitting in the silt at the side of the dome room was the flashing strobe. What couldn't been seen from the gardening was quite clear now. The breakthrough would still need squeezing through the goop but by turning right instead of left you would enter into the domed room.

Next day, I did the final bit of gardening, played bulldozer with the goop and squeezed through the connection.

While all this was happening, a second team of dedicated gardeners were busy plying their skills to S-tunnel. Jurgen Gehrre & Gary Bottomley strongly believed that the S-tunnel continued and were willing to commit most diving weekends available to prove their point.

Two locations were picked, one at S12 and one at S13. This allowed them to move from one site to the next as visibility and capability to proceed without vision was lost. Unlike the two Johns, Jurgen was determined to make any connection backmount friendly. A big call when you are not even sure if there is an extension.

The technique was quite simple. You see space on the other side of a rock, so you move the rock. You then look around the next rock. If there is space, you also move that rock. And so the cycle goes. The unfortunate part about it is that moving a rock in around S13 may mean having to carry it away with you. (I wondered why Jurgen was hanging around that kid with the big TONKA toy tip truck).

As with the work on the H-G tunnel connection, sense of humour failures were frequent. Whilst John V was moving small rocks in the Goat Track, Jurgen followed the mantra – bigger is better. Working in zero visibility, a sense of humour failure could arise simply by the sound of movement by a large rock – especially if it moves more than you planned or expected.

Jurgen's work did not go un-noticed by the NSW guys. Stuart McGregor and Mark Jobbins from Sydney also noted the potential of S12 during one of their trips to the Mount. These guys are sewer rats from way back, cutting their teeth on Burrunjuk Dam caves in near zero viz, 6 degrees water and at 40m depth.

Over a few trips, Stuart and Mark pushed hard on S12, adding to the already hard work of Jurgen and Gary. Over Easter, 2004, the combined effort finally paid off, with a passage finally pathed, past the rock collapse and into as yet un-explored passage.

The excitement of new passage cannot be under-estimated. So too, is the silt that pours off the roof in passage that has never yet seen scuba exhaust bubbles. Exploration of virgin passage is something that requires constant forward movement – but who doesn't want to do that?

When Stuart broke through, he quickly looked ahead and saw multiple passages heading in various directions, but no Mark behind him! He ventured up the forward passage a few meters using the tape measure as a guideline and it continued ahead, but still no Mark behind him! The prospect of having Mark stuck at the restriction and/or not being able to get through at all meant that he had to abort here and return on a subsequent dive. It is always difficult and disconcerting to follow a line through a very tight restriction and in zero visibility, especial-

ly when you haven't seen it first!

The following morning, however, was a different story. Plans were made and JDZ, Mark and Stuart went through into the new extension (called the "New South Way") and two main passages were explored, both running parallel and finally connecting, making a circuit dive of around 150m. Not big in the scale of Tank Cave, but the biggest extension to the site in the last several years. Both passages were terminated, with small leads yet to be explored. However, like the entrance, they will require significant gardening and some very low profiling.

The following Tank Cave weekend saw the 2 Johns back in S12. The leads were pushed but only a short way and, as I described, "had to turn when the single fixed torch on my helmet started stopped forward progress".

Meanwhile on that same weekend, Jurgen and Gary went back to S13 and also broke through his other restriction. The look on Jurgen's face when he exited the water had to been seen to be believed. Whilst this extension was only 25m, it lead into a different area to what was discovered only weeks before. Jurgen and Gary's initial hunch was correct. Both S leads offered a good chance of a breakthrough into new sections of cave and both actually did.

Whilst this article and others recently published in Guidelines describe the success stories, they do not tell of the less glamorous ones. Working through a section of cave for a year, only to gain another 7m of passage and boulders too big to ever considering trying to move. Clearing a path over many weekends through an area barely high enough for a tank, only to find that the small room at the end is just that – a small room. Gardening is not something recommended. It takes lots of patience, nerve (aka stupidity) and time (read years). There are no guarantees that you will ever succeed in finding new passage. On the other hand.

John Vanderleest

FOR SALE

P-VALVES –
\$70.00

\$80.00

with non-kink flexible tubing
and cap.

Phone Gary or Linda on 03 5565 8793

or email: garinda@tpgi.com.au

CDAA SITE ACCESS - www.cavedivers.com.au

Remember: Access is a privilege, not a right. Please be considerate of landowners wishes.

CN = CAVERN S = SINKHOLE C = CAVE P = PENETRATION

SITE	LEVEL	OWNER	ACCESS DETAILS
MOUNT GAMBIER - SOUTH AUSTRALIA			
Ewens Ponds	Nil	DEAH P.O. Box 1046 Mt Gambier 5290 (08) 8735 1177	Groups of 6 or more, phone/mail to Dept. for Environment & Heritage (DEAH) Smaller groups, no need.
Horse & Cart	CN	Peter Cunningham	By phone or mail, 1 week prior. Ph: (08) 8738 4003.
Tea Tree	CN	PO Box 2168, Mt Gambier 5290	
Little Blue	S	District Council of Grant	Little Blue - permission not required - must carry card.
Allendale	C	District Council of Grant	Obtain key from Lady Nelson Tourist Information Centre.
Gouldens	CN	DEAH	General Diving: Divers to contact DEAH and notify of date and site to be dived. Please make requests by phone or fax only. (Email no longer accepted) Divers must have the correct CDAA diving endorsement for the site and carry current financial CDAA membership card. The diver must have signed an indemnity with DEAH before access is permitted. Training: The Instructor is to notify DEAH of the date the sites are needed and to forward signed indemnities from each student and their temporary card number/ membership number.
2 Sisters	CN	P.O. Box 1046	
Fossil	C	Mt Gambier 5290 Ph: (08) 8735 1177 Fax: (08) 8735 1135	
Ela Elap	S	Mr. Peter Norman	Visit the house before diving.
One Tree	S	Private Bag 67, Mt Gambier 5290	If no one home - no dive!
Piccaninnie Ponds	S	DEAH P.O. Box 1046, Mt Gambier 5290	Permit holders by phone or fax. Be aware of delicate vegetation. Ph: (08) 8735 1177. Fax: (08) 8735 1135 NOTE: Indemnity form to be completed with membership renewal.
Dave's Cave		Dave's Cave - New site, information to come next issue or see website.	
Hells Hole	S	Hells Hole - Minimum of 4 divers to be on site at all times..	
Pines	P/C	Pines - Unrestricted numbers / days	
Mud Hole	C	Mud Hole - Unrestricted numbers / days	
Nettle Bed	P	Nettle Bed - Open every weekend. Maximum of 4 divers, 1 dive per day.	
Nettle Cave		Nettle Cave - New site, information to come next issue or see website.	
Iddlebidy	P	Iddlebidy - Open every Saturday. Maximum of 4 divers, 1 dive per day.	
Owner: Forestry SA PO Box 162 Mount Gambier SA, 5290 Ph (08) 8724 2876. Fax 8724 2885 Email: forestrysa@saugov.sa.gov.au Contact: ForestrySA by email, fax or phone to arrange permit. Collect permits from Carter Holt Harvey Mill Gatehouse, Jubilee Hwy Mt Gambier.			
IMPORTANT:			
<ul style="list-style-type: none">No diving on Total Fire Ban Days. ForestrySA may apply Forest Work Bans if forest fire danger is expected to reach extreme. Such bans exclude the public from entering the forest. If in doubt, check with Forestry Ranger or Forestry Office, although signs are generally erected at diving sites to indicate such bans.Permit also required to run compressors during fire danger season.Keys for Hells Hole, Nettle Bed & Iddlebidy can be obtained from Lady Nelson Visitor Centre.			
Kilsby's	S	Landowner leased to S.A. Police	Restricted access conditions apply - refer to the CDAA Website. Twin tanks, maximum of 40 metres depth. Write to: Gerret Springer, 30 Lorikeet Street, Mt Gambier SA 5290. Email: rolukage@ozemail.com.au , 4 to 6 weeks prior to wanting to dive. Please enclose stamped self-addressed envelope (Do not contact landowner) or book via web page. Access date now the first weekend of every month. No animals permitted. No mid-week diving.
		No Visitors	

CDAA SITE ACCESS

SITE	LEVEL	OWNER	ACCESS DETAILS
MOUNT GAMBIER - SOUTH AUSTRALIA (continued)			
Shaft	S	Generally open one weekend a month L. Claridge P.O. Box 15 Koroit VIC. 3282 Ph: (03) 5565 8793 A.H. Mob: 0408 052 070	For access dates contact Linda Claridge. Also. See www.cavedivers.com.au for more info. Nitrox as a diving mix is not allowed in the shaft. Deco mixes ATTACHED to a shot line are permissible. Divers applying to dive in the Shaft must have documented experience of a least 5 twin-tank dives. Post Course Divers must provide their own harness and tank tapes. Email: garinda@tpgi.com.au
Hann's cave	P	P & A Lasslett	Groups of four divers only apply in writing to Site Director. Limited groups will be allowed access over the summer months. The site is very delicate and therefore only limited access is available. Divers applying will be notified as to further access details. Please include a stamped self addressed envelope.
Engelbrechts		Mt Gambier	Obtain key from Mt Gambier Tourist Information Centre. Access agreement must be signed prior to diving. 2 divers must sign out keys, all divers must sign in advising which groups they are diving with. NOTE: Special conditions apply during March and April. Please book public holiday dives with lessee.
- East	C	Council	
- West	P	Lessee Ph: (08) 8723 2299	
Three Sisters	P	Millicent Council	Contact Records Officer. Access available for experienced Penetration divers only. Low profile or side mounted independent air systems required. Access agreement must be signed prior to diving. Please allow 4 weeks for indemnities to be processed.
McKay's Shaft	S		Contact South East representative Phil Argy at Mt. Gambier access and indemnities.
Tank Cave	P	Mr. DYCE	Access Manager: Noel Dillon Email: noel.dillon@macquarie.com
Baker's Cave	C		Please write to the Site Access Director to dive in Baker's Cave. Include stamped self-addressed envelope. Climbing equipment required. Only open October to April.
NULLARBOR - WESTERN AUSTRALIA			
Cocklebidy	C		Apply in writing for permission to dive at least 4 weeks in advance of trip to:
Murra El Elevyn	P/C		District Manager, C.A.L.M., PO Box 234, Esperance, W.A. 6450.
Tommy Grahams	C		Phone: (08) 9071 3733 Fax: (08) 9071 3657
Weebubbie	S/C		Apply to the Department of Land Information (DLI), now comes under the control of the Department for Planning and Infrastructure. Same location but new contact details Phone (08) 9347 5047 Fax (08) 9347 5004 Email: janice.leeman@dpi.wa.gov.au
N.S.W. - WELLINGTON CAVES			
Limekiln (McCavity)	P/C		Both Penetration and Cave Level are being accepted for this cave depending on it's water level at the time. The cave has a restriction at the entrance which is underwater making it a Penetration Dive. During drought, the water level drops to form a small lake below the restriction allowing experienced Cave Divers access to this delicate cave.
Water (Anticline)	C		Affected by high CO ₂ levels during Summer/Autumn. Access is co-ordinated with the Wellington Caves management by Greg Ryan - greg@cs.usyd.edu.au . Phone (02)97434157
Rum Jungle Lake	S		Unrestricted access currently exists - Please refer advice in Guidelines No. 68 or check CDAA website.
Burrinjuck	S/C/P		This is a tri rated site. Please see details in issue No. 73. There are no specific access arrangements.

UP COMING COURSES

Cavern / Sinkhole Courses

July 19-Aug 1, in Melbourne and Mt Gambier, Twin tanks and second reg supplied.

Contact Jane Bowman 03 9579 2600

October 4th-17 2004, in Melbourne and Mt Gambier, contact Jane Bowman - 03 9579 2600

October 7-24, in Perth, Contact Gary Bush, 0402 339 652

Cave Courses

Biannual (April & October) in WA, contact Gary Bush - gary.bush@bigpond.com

Two Courses - June 14-20 2004, August 23-29 2004, in Melbourne and Mt Gambier, contact Warrick McDonald info@abocean.com.au or 0408 374 112

CDAA Penetration Courses

October 2004 course

Weekend 1 : Friday October 15th to Sunday October 17th

Weekend 2 : Saturday October 23rd to Sunday October 24th

January 2005 course - 5 days - Friday January 14th to Tuesday January 18th

Easter 2005 course - 5 days - Good Friday to the following Tuesday

October 2005 course

Weekend 1 : Friday October 14th to Sunday October 16th

Weekend 2 : Saturday October 22nd to Sunday October 23rd

Any further requests for info should be directed to either :

Barrie Heard, Penetration Course Co-ordinator or Max Marriott, CDAA Standards Director

ADVERTISING RATES

FOR SPACE - APPLY TO TERRI ALLEN, PUBLICATIONS DIRECTOR...

Mobile: 0419 176 633 Email: pubdir@cavedivers.com.au

Size	Type	1 issue	Yearly*
Back page	Full colour	\$450	\$1350
Inside front page	Full colour	\$450	\$1350
Inside back page	Full colour	\$400	\$1200
Full page	Black+white	\$200	\$600
Half page	Black+white	\$125	\$375
Quarter page	Black+white	\$100	\$300

*Book up for 1 year's advertising and get 1 issue free. You also receive free full colour advertising on our web page: www.cavedivers.com.au

SITE DIRECTOR'S REPORT

Hi guys...

Yet again the time has come for me to write this article for the inclusion in our Guidelines.

2 New sites have now been opened - Dave's Secret Cave and Nettle Cave. Dave's cave is a Cave rated feature near Kongorong and Nettle Cave is a Penetration rated site just across from Pines. Currently there has been a slight hiccup in Dave's cave where it has been temporarily closed due to a diesel spill on site. Both sites are on Forestry land and access arrangements are detailed in Guidelines. Many thanks to the volunteers who have assisted with these sites. Our Pines map has recently been upgraded and is available on the web site.

A new South East Rep has been appointed. Darren Walters has accepted this position and I believe that he will work very hard in this position and be successful. His contact details are printed in this issue of Guidelines.

There have been problems with the booking system at Kilsby's - people booking many weekends in advance and then there are no bookings available to any "new" people and it can be difficult for even an existing "oldie" to get a spot. What has now been done is a system similar to Tank - there is one booking per person that is confirmed, all other bookings can be made but they will only be waitlisted. Once that dive has been completed, the next dive that is waitlisted will progress to

confirmed providing that there is sufficient spots still available. Hopefully this will stop those who want to book many weekends at a time and then don't show for the dive, as this was very frustrating to those who have difficulties booking the site. The new system should be fairer for all concerned.

Tables have been installed at some of the more popular sites around the south east and we hope to install a few more later this year. Hopefully they are being put to good use.

I especially need to thank ALL the volunteers who have helped during this last 12 months as without your help this job would be even more difficult. I will not name any of you because I wouldn't know where to start and I wouldn't like to leave anyone out. Should anyone have any ideas on new sites or time to volunteer please let me know as there is always work to be done.

Again this year the majority of my time has been taken up with access breaches in many sites. These range from what we see as minor infractions such as gates not being shut to more major ones as depth and time violations. We all need to be vigilant in access protocols.

Remember access is a privilege not a right.

Safe diving Rob Brennan.

INSTRUCTOR MATERIAL ORDERS:

Procedure for ordering student packs:

1. Check you are insured & financial.
2. Send order & cheque or by phone/credit card.
3. Allow 14 days from when the order is received - so allow plenty of time.
4. Student kits cannot be returned.
5. Instructors must be active.
6. Please do not pass my number on to dive shops - you should deal with them not me.

CONTACT:

HEIKE APPS - INSTRUCTOR MATERIALS OFFICER, PH: 02 6291 0566

PO Box 292, Calwell ACT 2905

Email: heike.apps@ga.gov.au

CDAI INSTRUCTORS

NAME A.C.T.	CONTACT No.s	Cavern	Sinkhole	Cave	Penetr	Email
APPS, HEIKE	BH 02 6249 9170 AH 02 6291 0566	Yes	Yes	Yes		heike.apps@ga.gov.au
N.S.W.						
GRILLS, PETER	Home 02 4950 6262 Mobile 0419 820 920	Yes	Yes	Yes		peter_grills@hotmail.com
ROBERTSON, ANDREW (currently inactive)	Home 02 9548 5987 Work 02 8868 8025 Mobile 0417 664 255	Yes	Yes	No		lscb005@bigpond.net.au
WALTERS, DESMOND	BH 02 6041 1405 AH 02 6025 3506	Yes	Yes	Yes		des@descend.com.au
SOUTH AUSTRALIA						
FEATONBY, TIM	Mob: 0402 129 253	Yes	Yes	No		tim.featonby@defence.gov.au
MARRIOTT, MAX	AH 08 84473360 Mobile 0428 897 897	Yes	Yes	Yes	Yes	dive69@chariot.com.au
YARRA, GEORGE	BH 08 8447 5771 Mobile: 0418 847 889	Yes	Yes	No		gumbyg@adam.com.au
WEST AUSTRALIA						
BUSH, GARY	BH 08 9281 9460 AH 08 9367 4701	Yes	Yes	Yes		gary.bush@bigpond.com
NTH. TERRITORY						
ELLIOTT, CLAIRE	BH 08 8981 3049 Mobile 0417 808 647	Yes	Yes	No		claire@divedarwin.com
WEISSE, RICK	BH 08 8981 3049 Mobile 0411 470033	Yes	Yes	No		rick@divedarwin.com
VICTORIA						
ALLEN, TERRI	Mob: 0419 176 633	Yes	Yes	No	No	terri.allen@baker.edu.au
AXTON, PAUL	BH 9782 1671 Mobile 0419 346 442	Yes	Yes	Yes	Yes	lozhard@bigpond.com
BARCLAY, GARY	AH 03 5565 8793 Mobile 0407 052 074	Yes	Yes	Yes	Yes	garinda@tpgi.com.au
BOURKE, STEPHEN	Mob: 0405 314 204	Yes	Yes	No	No	scubasteven@bigpond.com.au
BOWMAN, JANE	BH 03 9579 2600 Mobile 0407 566 455	Yes	Yes	No		info@abocan.com.au

CDAI INSTRUCTORS

NAME	CONTACT No.s	Cavern	Sinkhole	Cave	Penetr	Email
VICTORIA cont.						
BUGG, STAN	AH 03 9379 8791	Yes	Yes	Yes		sbbugg@micronica.com.au
CLARIDGE, LINDA	Mobile 0408 052 070 AH 03 5565 8793	Yes	Yes	Yes	Yes	garinda@tpgi.com.au
CORNELL, BRIAN	Home 03 5985 2514	Yes	Yes	Yes		cornell@alphalink.com.au
DALLA-ZUANNA, JOHN	Home 03 9434 1216 Work 03 9480 1316 Mobile 0407 887 060	Yes	Yes	Yes	Yes	jdz@smart.net.au
EDWARDS, CHRIS	0417 116 372	Yes	Yes	No		cedwards@teksupport.net.au
HEARD, BARRIE	AH (03) 5627 6474 Mobile 0419 401 276	Yes	Yes	Yes	Yes	iantd@dcsi.net.au
KLEIN, PEDR	AH: 9750 6682	Yes	Yes	No	No	oxygenuser@optusnet.com.au
MCDONALD, WARRICK	Work 03 9579 2600 Mobile 0408 374 112	Yes	Yes	Yes		info@abocan.com.au
MONACO, RUBENS	BH 03 5984 3770 Mobile: 0407-863-498	Yes	Yes	No		info@divemelbourne.com.au
VANDERLEEST, JOHN	Home 03 9575 3636	Yes	Yes	Yes		vanderleestj@ozemail.com.au
WEALTHY, BOB	Mobile 0417 524 005 Home 03 5985 8338	Yes	Yes	Yes		wealthy@pac.com.au

RE: SHAFT - DID YOU KNOW...

Some divers are fronting up to dive this site without a harness, carabineer or even a sling. Whilst prior arrangements with the guide may allow for this to occur, please be aware that you may be charged for the hire of those items.

The guides will happily supply the A-Frame, ropes and pulleys but it is highly recommended that you own your own personal climbing equipment.

SHAFT DATES, 2004

The upcoming dates are...

October 30/31 • November 20/21 • December 04/05

*For information on any Shaft or course dates contact
Linda Claridge on 03 5565 8793 or email shaft@tpgi.com.au*

TECHNICAL DIVING GAS ANALYSIS EQUIPMENT



SOG Knives

Get it all...ONLINE.. From;

www.divetekoz.com



Cardholders Name: _____	Sub Total \$ _____																				
Address: _____	Plus postage & handling <u> </u> \$6.00																				
_____ Postcode: _____	TOTAL \$ <u> </u>																				
Card No. <table border="1" style="display: inline-table; border-collapse: collapse; text-align: center; width: 150px;"> <tr><td> </td><td> </td><td> </td><td> </td><td> </td><td> </td><td> </td><td> </td><td> </td><td> </td><td> </td><td> </td><td> </td><td> </td><td> </td><td> </td><td> </td><td> </td><td> </td><td> </td></tr> </table>																					<input type="checkbox"/> Bankcard <input type="checkbox"/> Mastercard <input type="checkbox"/> Visa
Expiry Date: _____ Signature: _____ Ph: () _____	Fax: () _____																				

Tank Cave Annual Renewal was due on August 1st...

For all returning Tank Cave divers the annual renewal application and \$100 fee was due on August 1st. The application form can be downloaded from the CDAA website at www.cavedivers.com.au. The annual fee has not increased, nor has the additional bookings fee of \$40 and divers are still entitled to two pre-paid bookings for this fee. However please note that due to high demand all divers need to plan ahead and book early for Tank Cave dives. All bookings shall be confirmed by Noel Dillon, preferably via email. However no divers bookings shall be confirmed without a buddy or buddy grouping. If a diver cancels their booking then the dive buddies booking will also automatically be cancelled. Therefore the Tank Cave booking page should be checked prior to departure for Mount Gambier to reconfirm your booking.

TANK CAVE

~ DATES FOR 2004/05 ~

• Oct. 7/8/9/10

(pref given to non Vic/S.A. Divers)

• Oct. 30/31 - Mapping W'end

• November 13/14

• December 11/12

• December 26/27/28 (Christmas)

• January 1/2/3 (New Year)

• January 15/16

• January 29/30

• February 12/13

• February 26/27

• March 12/13/14 (Vic. Labour Day)

(Mapping Weekend)

• March 25/26/27/28 (Easter)

~ Articles for Guidelines ~

Members wishing to submit articles for inclusion in Guidelines can do so in the following manner:

- Send articles & photos via post, or preferably by email to:
Terri Allen, PO Box 7592, Melbourne 8004.
- Email to pubdir@cavedivers.com.au and seapics@alphalink.com.au
- Text files should be saved as Word files and pictures as separate jpeg files. If mailing please send pics and text on CD.
- Pictures saved from digital camera or scanned from photos must be at least 200 ppi at 15cm wide or equivalent, and saved as Greyscale as JPEG's.



by Stu McGregor. Underwater photos by Neil Vincent

A huge trip, every day was an adventure; From the start, things were going a little wrong. My first dive I ripped the neck seal down to the collar, repaired it, only to do it again. Wombat & otter had just got their dry-suits back, ready for action, only to find them springing new leak on ever dive and seemly endless gear problems for each day of diving. That's a diver's life, but the weather was great.

While we are mostly from Sydney we had a few tag a-longs from the far north coast, for them an 18 hour trip to Mt Gambier, for us a walk in park 15 hours. The drive down was usual CB chatter, this time we came up with CB names for the touring members, don't ask, very long story. However in keeping with the tour, I am staying with the nick-names. As with each trip the magnificent 6 dives were undertaken, pic's, Kilsby's, Iddlebidy, Pines and more Pines and ending on the supreme dive, tank cave. While our other dives are worthy stories my story focuses on tank cave for their, we had our greatest adventure.

Tank...

Wombat and I have completed all requirements, so we had some big dives planned. On the other hand it was Otter & Padlocks first time so as a buddy pair it was a whole new world for them. Pet & Pop were second timers, intended on

covering some old ground for a second look, take the usual happy snaps and explore new stuff.

Tank is a large system with some 9 km of passage over a small area.

The beauty of tank it does change around every corner and the number different passages to explore, seems endless. When learning to scuba dive, part of it is you gain another language, as a cave diver it is a new and different language. But tank divers have a language all of their own. Since I have some neat stories to tell you, for those of you who can't speak "tank" I have added a tank cave map with the points of interest so you may better understand or follow along.

JDZ was our tank guide for the weekend and part of his duties was to accompany the new comers on there first few dives down A & B tunnels. JDZ & John Vanderleest a few weeks early made a connection between two passages at H 5, which intern shorten the distance by some 400 metres to the back of G. It was a very narrow, silty vertical passage and at this time, not the place for two divers. Wombat was keen to reach the most northern point in the cave and do the over 900 metre swim around the old way to G 5. I on the other hand liked going south, to area past S 12 where we have been moving rubble in hope of finding new passage and now was so close for a breakthrough.



On our third day, JDZ was scootering out to the back of G to do some mapping and offered wombat a lift. Bastard he wanted to swim. So a dive plan was formed. Wombat got a toe with 4 cylinders and I got a very long swim, via the short cut with 4 side-mount cylinders to meet up with them at G 5. Elsewhere in the cave otter & padlock were heading south-east into F while Pet & pop planned a dive due south into S tunnel system. The dives got underway wombat & JDZ set off first and I followed dropping my first stage next to

cont. pg36

theirs, below H 5, 500m in. They turn south, as part of the zig-zag to get around, I head due north. There was a question over coming back this way, if there would be any visibility to get out. So in moving the 15m up and over to the other side takes me from 500m to 930m in the cave. The restriction is a small narrow slot, uphill. In places you need to turn your head sideways, drag and wiggle your way through, add to this an extra cylinder which was now between my legs. On the plus side there is flow coming down, so you see very well until you reach the top which is covered by a metre deep white fluffy power, you have no choice but to face plant through it. The flow on the return will make the slot, dark as, not that inviting. Once on the other side I still had some 300m to swim to get to G 5. Wombat & JDZ had already been their and beyond making the furthest distance cave. They returned down the passage I was in, in hope of making contact. There was a shake of hands and the question was asked of me if I intend to return via the slot, hmmm, yep, and then they were gone.

Meanwhile in the far southeast of the cave, Otter & Padlock still moving forward had a sudden change of direction. A high pressure hose leak. No dramas, but time to return. At last I laid eyes on G5, a marker in the centre of what is a huge sinkhole. 50m or so across, 10m high. In time I returned via the slot, it was dark as getting out. The dive time was around 2 hours by the time I returned wombat was still there doing deco. One of his two computers just wouldn't let him get out without extra time. The very next dive wombat & I turned our intentions south. We had already mapped from S 12 to the end of the line and had "pinged" it for a GPS point on a previous dive; it was now time to go further. But could we get through, a small hole and was their new passage, to dirty to see. we set off south for the 500 metre swim to the end of the S12 line. in side-mounts and a wiggle I was through. I knew I need to go 20 metre to make sure that it didn't connect to back into the known tank system, it didn't instead a had a whole new set of passages never seem before to explore laid before my eyes. Which way to go, right, left, straight ahead, I turned around to look for wombat and he was stuck in the hole like a cork in a bottle, I waited, hmm & arred do I go back and help.

I continued straight, however the right hand passage looked more promising and opened to a larger passage, the left side tunnel could only led back to known tank areas, the passage I

was in look like ending but didn't it would get small then open up again and so on. I moved slowly waiting for wombat to brake through and catch up, but he didn't. I continued a little further, finally leaving the 100 tape at rest on a saddle with the 50 metre mark showing. I know the cave map



well so that the 50m had passed the current southern limit and open passage before me meant tomorrow was going to be a very good day. I turned and had 550 metres to swim home and maybe a wombat stuck in a hole. You got to wonder what was going through his mind. He was still their, fine, I slipped back through and we headed for entrance. It may sound slack that I left wombat stuck, but he was on the outside of the hole helping would be like pushing a cork inside a bottle and once in he may never get out.

We were wrapped and the team was all a buzz we had one day left and really only one dive do it in. To pushes as they say as far as we can. We had no big reals, so they were hunted down and all the guys helped out putting knots in the line all morning. A dive plan was worked out that required a science degree to understand, JDZ was added to it as well and for fun a plague was to be made up.

On the back is a LSC sticker on the front, you are now leaving SA welcome to NSW (new south way) The time had come The tanks had been loaded in the hole.

Otter & padlock were already in the water having a dive, Pop & pet planned there dive to find us on our return for some photos. There was an air excitement and thrill about it all. JDZ had concerns about the restriction, he had never seen it. I had concern about Wombat getting stuck; he had seen it we all shared concerns about the dive plan.

The Plan was... Wombat & Jdz team up again, dive first and 5 minutes later I would follow. At a point in the cave we would drop the stages tanks, Jdz would run the short jump across to S 12 and on the return we would cut the line to leave a jump in place. It was

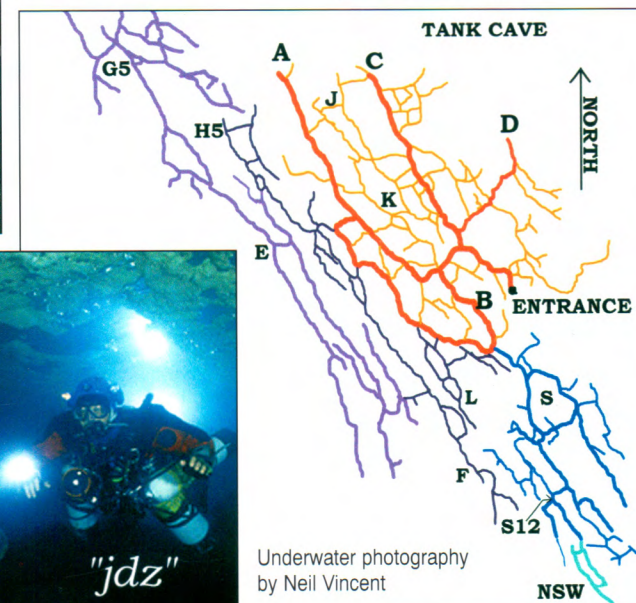
also to be the rally point at the end of the dive. Next JDZ was first through the restriction taking a main knotted line following the tape and at some stage just after the new main right passage would tire off and leave that reel. Wombat was next through; he was to place the line arrows for the jump. Jdz returned and placed a new line and they both move into the right hand passage and explore what was their.

There five minutes was up, I enter place my marker on the new tee, staying straight, and pick up the real jdz had left, follow the tape and continue down the passage I was in. And on my return I take the tape out. All of us were to take compass, depth, distance and note features etc map as we go.

The plan was always to give each other space, but to be there if needed. Our turn around was to be less than 1/3, upon return we meet at the rally point. After the dive wombat made a comment That's what happens when you're first.

After 80 metres from the tee wombat & Jdz passage seemed to chock down and they turned. Meanwhile in the other passage I was having a ball, but slow progress it was going big, small. It came to an end with small side passages going off. I could see clearly through the right passage into this large room, once in, Bastard there was an orange line freshly laid, I was back in tank. I cut my line tied off and turned, picked up the 100m tape measure. Back at the restriction, wombat was out and tiring the plague off too the line, (part of the plan). Jdz was still just in when I arrived. Up until this point the plan had gone like clockwork the whole area had only about a 1m of Vis, which was fine. Then JDZ changed the plan and cut the line, for a tire off, he intended the jump to be now hear. Wombat who was out just finished tiring the plague when the line went slack, his heart skipped a beat as he though he broken the line and we had no way out. So he made

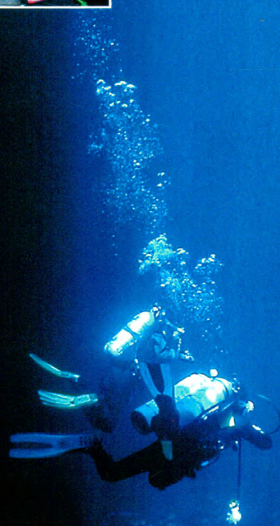
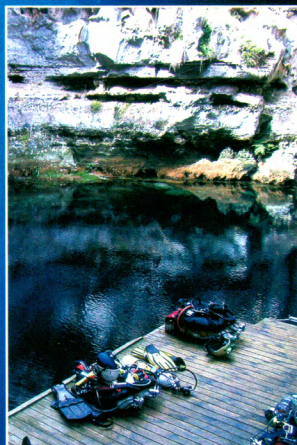
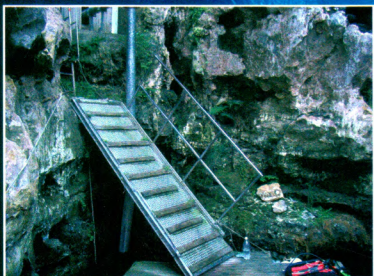
dash for the restriction to come in while jdz was going out. A bump of bodies a little confused sign language in very low vis, next thing I got the plague and it is now on the line. There was another shake of hands and Pop & pet found us for some happy snaps and the rest is history. So boy and girls That how NSW end up in SA... Cheer Stu



Underwater photography by Neil Vincent



Guidelines Gallery



Kilsby's
by Martin Bures

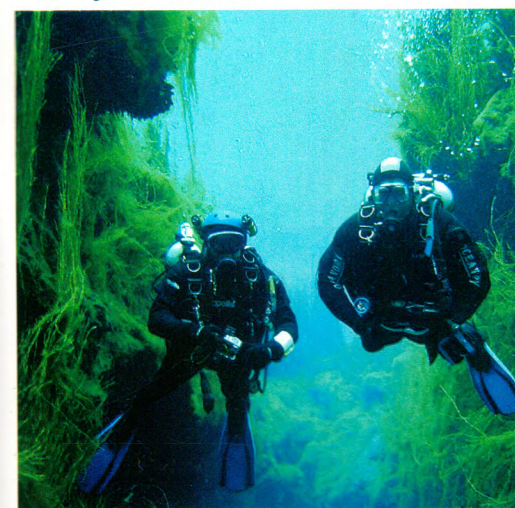
Guidelines Gallery



*Belinda Klein, our
Records Officer enjoying
the sport she loves so much,
that and her husband, CDAA
Instructor and photographer,
Pedr Klein.*



Piccs by Sue Powell



Kilsby's by Alex Jaksic

ABOVE AVERAGE BELOW WATER



Now available in Australia

Australian Dealers:

NSW & QLD

Dive Centre Bondi
192 Bondi Rd, BONDI, NSW 2026
Ph: 02 9369 3855
Email: dcb@divesydney.com.au

Dive Centre Manly
10 Belgrave St, MANLY, NSW 2095
Ph: 02 9977 4355
Email: dcm@divesydney.com.au

VIC

Diver Instruction Services
279 Maroondah Highway, RINGWOOD, VIC 3134
Ph: 03 9879 2868
Email: info@diverinstructionservices.com.au

Dealer Enquires Welcome

Halcyon Australia
www.divesydney.com.au/HalcyonAustralia.htm
Email: halcyon@divesydney.com.au